



70-458^{Q&As}

Transition Your MCTS on SQL Server 2008 to MCSA: SQL Server 2012, Part 2

Pass Microsoft 70-458 Exam with 100% Guarantee

Free Download Real Questions & Answers **PDF** and **VCE** file from:

<https://www.passapply.com/70-458.html>

100% Passing Guarantee
100% Money Back Assurance

Following Questions and Answers are all new published by Microsoft Official Exam Center

-  **Instant Download** After Purchase
-  **100% Money Back** Guarantee
-  **365 Days** Free Update
-  **800,000+** Satisfied Customers





QUESTION 1

You administer a Microsoft SQL Server 2012 instance that contains a financial database hosted on a storage area network (SAN). The financial database has the following characteristics:

A data file of 2 terabytes is located on a dedicated LUN (drive D).

A transaction log of 10 GB is located on a dedicated LUN (drive E).

Drive D has 1 terabyte of free disk space.

Drive E has S GB of free disk space.

The database is continually modified by users during business hours from Monday through Friday between 09:00 hours and 17:00 hours. Five percent of the existing data is modified each day.

The Finance department loads large CSV files into a number of tables each business day at 11:15 hours and 15:15 hours by using the BCP or BULK INSERT commands. Each data load adds 3 GB of data to the database.

These data load operations must occur in the minimum amount of time.

A full database backup is performed every Sunday at 10:00 hours. Backup operations will be performed every two hours (11:00, 13:00, 15:00, and 17:00) during business hours.

You implement log shipping of the financial database to another SQL Server 2012 instance. You decide to failover to this secondary database.

You need to ensure that all transactions will be replicated to the secondary database.

A.

Differential

B.

Transaction log

C.

FULL

D.

SIMPLE

E.

BULK_LOGGED

F.

SKIP

G.



RESTART

H.

STANDBY

I.

CHECKSUM

J.

DBO_ONLY

K.

COPY_ONLY

L.

NORECOVERY

M.

NO_CHECKSUM

N.

CONTINUE_AFTER_ERROR

Correct Answer: L

QUESTION 2

You administer a Microsoft SQL Server 2012 instance that contains a financial database hosted on a storage area network (SAN).

The financial database has the following characteristics:

A data file of 2 terabytes is located on a dedicated LUN (drive D).

A transaction log of 10 GB is located on a dedicated LUN (drive E).

Drive D has 1 terabyte of free disk space.

Drive E has S GB of free disk space.

The database is continually modified by users during business hours from Monday through Friday between 09:00 hours and 17:00 hours. Five percent of the existing data is modified each day.

The Finance department loads large CSV files into a number of tables each business day at 11:15 hours and 15:15 hours by using the BCP or BULK INSERT commands. Each data load adds 3 GB of data to the database.



These data load operations must occur in the minimum amount of time.

A full database backup is performed every Sunday at 10:00 hours. Backup operations will be performed every two hours (11:00, 13:00, 15:00, and 17:00) during business hours.

You need to ensure that the backup size is as small as possible.

- A. Differential
- B. Transaction log
- C. FULL
- D. SIMPLE
- E. BULK_LOGGED
- F. SKIP
- G. RESTART
- H. STANDBY
- I. CHECKSUM
- J. DBO_ONLY
- K. COPY_ONLY
- L. NORECOVERY
- M. NO_CHECKSUM
- N. CONTINUE_AFTER_ERROR

Correct Answer: B

QUESTION 3

You are creating a Data Quality Services (DQS) solution. You must provide statistics on the accuracy of the data.

You need to use DQS profiling to obtain the required statistics.

Which DQS activity should you use?

- A. Cleansing
- B. Knowledge Discovery
- C. Matching Policy
- D. Matching



Correct Answer: A

QUESTION 4

You are a database administrator for a Microsoft SQL Server 2012 environment.

You need to ensure that for each copy of the database, users are able to read and write data that will then be synchronized between all of the database instances.

Which feature should you use?

- A. peer-to-peer replication
- B. snapshot replication
- C. failover clustering
- D. database audits

Correct Answer: A

QUESTION 5

You administer a Windows Azure SQL Database database named Human_Resources. The database contains 2 tables named Employees and SalaryDetails.

You add two Windows groups as logins for the server:

CORP\Employees - All company employees

CORP\HRAdmins - HR administrators only

HR Administrators are also company employees.

You need to grant users access according to the following requirements:

CORP\Employees should have SELECT access to the Employees table.

Only users in CORP\HRAdmins should have SELECT access to the SalaryDetails table. Logins are based only on Windows security groups.

- A. Create a database role called Employees. Add CORP\Employees to the db_datareader role. Add all company employees except HR administrators to the Employees role. Deny SELECT access to the SalaryDetails table to the Employees role.
- B. Create a database role called HRAdmins. Add all company employees except HR administrators to the db_datareader role, Add all HR administrators to the HRAdmins role. Grant SELECT access to the SalaryDetails table to the HRAdmins role. Deny SELECT access to the SalaryDetails table to the db_datareader role.
- C. Create two database roles: Employees and HRAdmins. Add all company employees to the Employees role. Add HR administrators to the HRAdmins role. Grant SELECT access to all tables except SalaryDetails to the Employees role. Grant SELECT access to the SalaryDetails table to the HRAdmins role. Deny SELECT access to the SalaryDetails table to the Employees role.



D. Create a database role called Employees. Add all HR administrators to the db_datareader role. Add all company employees to the Employees role. Grant SELECT access to all tables except the SalaryDetails table to the Employees role. Deny SELECT access to the SalaryDetails table to the Employees role.

Correct Answer: D

QUESTION 6

Note: This question is part of a series of questions that use the same set of answer choices. An answer choice may be correct for more than one question in the series.

You administer a Microsoft SQL Server 2012 server that hosts a transactional database and a reporting database. The transactional database is updated through a web application and is operational throughout the day. The reporting database is only updated from the transactional database.

Database	Description
Transactional database	Recovery model: <ul style="list-style-type: none">• Full Backup schedule: <ul style="list-style-type: none">• Full database backup: midnight, daily• Differential database backup: on the hour, every two hours starting at 02:00 hours except at 00:00 hours• Log backup: every half hour, except at the times of full and differential backups
Reporting database	Recovery model: <ul style="list-style-type: none">• Simple Backup schedule: <ul style="list-style-type: none">• Full database backup: 01:00 hours daily• Differential database backup: 13:00 hours daily Data updates: <ul style="list-style-type: none">• Changes in data are updated from the transactional database to the reporting database at 00:30 hours and at 12:30 hours• The update takes 15 minutes

The differential backup of the reporting database fails. Then, the reporting database fails at 14:00 hours.

You need to ensure that the reporting database is restored. You also need to ensure that data loss is minimal.

What should you do?

- A. Perform a page restore.
- B. Perform a partial restore.



- C. Perform a point-in-time restore.
- D. Restore the latest full backup.
- E. Restore the latest full backup. Then, restore the latest differential backup.
- F. Restore the latest full backup, and restore the latest differential backup. Then, restore the latest log backup.
- G. Restore the latest full backup, and restore the latest differential backup. Then, restore each log backup taken before the time of failure from the most recent differential backup.
- H. Restore the latest full backup. Then, restore each differential backup taken before the time of failure from the most recent full backup.

Correct Answer: D

QUESTION 7

You are designing a SQL Server Integration Services (SSIS) data flow to load sales transactions from a source system into a data warehouse hosted on Windows Azure SQL Database. One of the columns in the data source is named ProductCode.

Some of the data to be loaded will reference products that need special processing logic in the data flow.

You need to enable separate processing streams for a subset of rows based on the source product code.

- A. Script Task
- B. Conditional Split
- C. Multicast
- D. Source Assistant

Correct Answer: B

The Conditional Split transformation can route data rows to different outputs depending on the content of the data
<http://technet.microsoft.com/en-us/library/ms137886.aspx>

QUESTION 8

You administer a Microsoft SQL Server 2012 database.

You create an availability group named haContosoDbs. Your primary replica is available at Server01\Contoso01.

You need to configure the availability group to minimize transaction latency on any available secondary databases. In the event of a database failure, the designated secondary database should come online automatically.



- A. ALTER AVAILABILITY GROUP haContosoDbs MODIFY REPLICAS ON 'Server01\Contoso01' WITH (AVAILABILITY_MODE = ASYNCHRONOUS_COMMIT, FAILOVER_MODE = AUTOMATIC)
- B. ALTER AVAILABILITY GROUP haContosoDbs MODIFY REPLICAS ON 'Server01\Contoso01' WITH (AVAILABILITY_MODE = ASYNCHRONOUS_COMMIT, FAILOVER_MODE = MANUAL)
- C. ALTER AVAILABILITY GROUP haContosoDbs MODIFY REPLICAS ON 'Server01\Contoso01' WITH (AVAILABILITY_MODE = SYNCHRONOUS_COMMIT, FAILOVER_MODE = MANUAL)
- D. ALTER AVAILABILITY GROUP haContosoDbs MODIFY REPLICAS ON 'Server01\Contoso01' WITH (AVAILABILITY_MODE = SYNCHRONOUS_COMMIT, FAILOVER_MODE = AUTOMATIC)

A. B. C. D.

Correct Answer: D

QUESTION 9

Note: This question is part of a series of questions that use the same set of answer choices. An answer choice may be correct for more than one question in the series.

You administer a SQL 2012 server that contains a database named SalesDb. SalesDb contains a schema named Customers that has a table named Regions. A user named userA is a member of a role named Sales.

UserA is granted the Select permission on the Regions table. The Sales role is granted the Select permission on the Customers schema.

You need to remove the Select permission for userA on the Regions table. You also need to ensure that UserA can still access all the tables in the Customers schema, including the Regions table, through the Sales role permissions.

- A. DENY SELECT ON Object::Regions FROM Sales
- B. DENY SELECT ON Schema:: Customers FROM Sales
- C. REVOKE SELECT ON Object::Regions FROM Sales
- D. REVOKE SELECT ON Schema: Customers FROM Sales
- E. DENY SELECT ON Object::Regions FROM UserA
- F. DENY SELECT ON Schema: Customers FROM UserA
- G. REVOKE SELECT ON Object::Regions FROM UserA
- H. REVOKE SELECT ON Schema::Customers FROM UserA
- I. EXEC sp_oddrolemember '\Sales\','\UserA\'
- J. EXEC sp_droprolemember '\Sales\','\UserA\'

Correct Answer: G



QUESTION 10

You administer a Microsoft SQL Server 2012 database.

All database traffic to the SQL Server must be encrypted by using secure socket layer (SSL) certificates or the connection must be refused.

Network administrators have deployed server certificates to the Windows store of all Windows servers on the network from a trusted Certificate Authority. This is the only Certificate Authority allowed to distribute certificates on the network.

You enable the Force Encryption flag for the MSSQLServer protocols, but client computers are unable to connect. They receive the following error message:

"A connection was successfully established with the server, but then an error occurred during the pre-login handshake, (provider: SSL Provider, error: 0 - The certificate chain was issued by an authority that is not trusted.) (Microsoft SQL Server)" You notice the following entry in the SQL Server log:


"A self-generated certificate was successfully loaded for encryption."

You need to configure SQL Server to encrypt all client traffic across the network. You also need to ensure that client computers are able to connect to the server by using a trusted certificate.

Which three actions should you perform in sequence? (To answer, move the appropriate actions from the list of actions to the answer area and arrange them in the correct order,)

Select and Place:

Restart the SQL Server.
Leave the certificate blank in the drop-down list on the Certificates tab.
Choose the new root-level certificate from the drop-down list on the Certificates tab.
Install Certificate Services on the SQL Server, and create a new root-level certificate.
From the SQL Configuration Manager on the SQL Server, open the Protocols properties for the SQL instance.
Choose the server certificate provided by the network administrators from the drop-down list on the Certificates tab.
From the SQL Configuration Manager on every client computer that will be connecting to SQL Server, open the Protocols properties for the SQL instance.



Correct Answer:



The screenshot shows a vertical list of instructions for configuring certificates on a SQL Server. The instructions are as follows:

- Leave the certificate blank in the drop-down list on the **Certificates** tab.
- Choose the new root-level certificate from the drop-down list on the **Certificates** tab.
- Install Certificate Services on the SQL Server, and create a new root-level certificate.
- From the SQL Configuration Manager on the SQL Server, open the **Protocols** properties for the SQL instance.
- Choose the server certificate provided by the network administrators from the drop-down list on the **Certificates** tab.
- Restart the SQL Server.
- From the SQL Configuration Manager on every client computer that will be connecting to SQL Server, open the **Protocols** properties for the SQL instance.

QUESTION 11

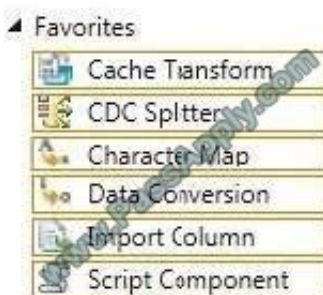
You are developing a SQL Server Integration Service (SSIS) package. The package loads a customer dimension table by using a data flow task.

Changes to the customer attributes must be tracked over time.

You need to produce a checksum value to identify the rows that have changed since the last Extract, Transform and Load (ETL) process execution. You need to use the least amount of development effort to achieve this goal.

Which transformation should you use? (To answer, select the appropriate transformation in the answer area.)

Hot Area:



Correct Answer:



Favorites



QUESTION 12

Note: This question is part of a series of questions that use the same set of answer choices. An answer choice may be correct for more than one question in the series.

You administer a SQL Server 2012 server that contains a database named SalesDb. SalesDb contains a schema named Customers that has a table named Regions. A user named userA is a member of a role named Sales.

UserA is granted the Select permission on the Regions table. The Sales role is granted the Select permission on the Customers schema.

You need to ensure that UserA is disallowed to select from any of the tables in the Customers schema.

- A. DENY SELECT ON Object::Regions FROM Sales
- B. DENY SELECT ON Schema::Customers FROM Sales
- C. REVOKE SELECT ON Object::Regions FROM Sales
- D. REVOKE SELECT ON Schema::Customers FROM Sales
- E. DENY SELECT ON Object::Regions FROM UserA
- F. DENY SELECT ON Schema::Customers FROM UserA
- G. REVOKE SELECT ON Object::Regions FROM UserA
- H. REVOKE SELECT ON Schema::Customers FROM UserA
- I. EXEC sp_addrolemember \\Sales\\, \\UserA\\
- J. EXEC sp_droprolemember \\Sales\\, \\UserA\\

Correct Answer: F

[70-458 PDF Dumps](#)

[70-458 VCE Dumps](#)

[70-458 Exam Questions](#)



To Read the [Whole Q&As](#), please purchase the [Complete Version](#) from [Our website](#).

Try our product !

100% Guaranteed Success
100% Money Back Guarantee
365 Days Free Update
Instant Download After Purchase
24x7 Customer Support
Average 99.9% Success Rate
More than 800,000 Satisfied Customers Worldwide
Multi-Platform capabilities - [Windows](#), [Mac](#), [Android](#), [iPhone](#), [iPod](#), [iPad](#), [Kindle](#)

We provide exam PDF and VCE of Cisco, Microsoft, IBM, CompTIA, Oracle and other IT Certifications. You can view Vendor list of All Certification Exams offered:

<https://www.passapply.com/allproducts>

Need Help

Please provide as much detail as possible so we can best assist you.
To update a previously submitted ticket:



 <p>One Year Free Update Free update is available within One Year after your purchase. After One Year, you will get 50% discounts for updating. And we are proud to boast a 24/7 efficient Customer Support system via Email.</p>	 <p>Money Back Guarantee To ensure that you are spending on quality products, we provide 100% money back guarantee for 30 days from the date of purchase.</p>	 <p>Security & Privacy We respect customer privacy. We use McAfee's security service to provide you with utmost security for your personal information & peace of mind.</p>
---	---	--

Any charges made through this site will appear as Global Simulators Limited.
All trademarks are the property of their respective owners.
Copyright © passapply, All Rights Reserved.