



70-411^{Q&As}

Administering Windows Server 2012

Pass Microsoft 70-411 Exam with 100% Guarantee

Free Download Real Questions & Answers **PDF** and **VCE** file from:

<https://www.passapply.com/70-411.html>

100% Passing Guarantee
100% Money Back Assurance

Following Questions and Answers are all new published by Microsoft
Official Exam Center

-  **Instant Download** After Purchase
-  **100% Money Back** Guarantee
-  **365 Days** Free Update
-  **800,000+** Satisfied Customers





QUESTION 1

Your network contains an Active Directory forest. The forest contains two domains named contoso.com and fabrikam.com. All of the DNS servers in both of the domains run Windows Server 2012 R2.

The network contains two servers named Server1 and Server2. Server1 hosts an Active Directory-integrated zone for contoso.com. Server2 hosts an Active Directory-integrated zone for fabrikam.com. Server1 and Server2 connect to each other by using a WAN link.

Client computers that connect to Server1 for name resolution cannot resolve names in fabrikam.com.

You need to configure Server1 to support the resolution of names in fabrikam.com. The solution must ensure that users in contoso.com can resolve names in fabrikam.com if the WAN link fails.

What should you do on Server1?

- A. Create a stub zone.
- B. Add a forwarder.
- C. Create a secondary zone.
- D. Create a conditional forwarder.

Correct Answer: C

<http://technet.microsoft.com/en-us/library/cc771898.aspx> When a zone that this DNS server hosts is a secondary zone, this DNS server is a secondary source for information about this zone. The zone at this server must be obtained from

another remote DNS server computer that also hosts the zone. With secondary, you have ability to resolve records from the other domain even if its DNS servers are temporarily unavailable. While secondary zones contain copies of all the resource records in the corresponding zone on the master name server, stub zones contain only three kinds of resource records:

A copy of the SOA record for the zone.

Copies of NS records for all name servers authoritative for the zone. Copies of A records for all name servers authoritative for the zone.

References:

http://www.windowsnetworking.com/articles-tutorials/windows-2003/DNS_Stub_Zones.html

html

<http://technet.microsoft.com/en-us/library/cc771898.aspx> <http://redmondmag.com/Articles/2004/01/01/The-Long-and-Short-of-Stub-Zones.aspx?Page=2>

QUESTION 2



Your network contains an Active Directory domain named contoso.com. The domain contains a server named Server1 that has the Network Policy Server server role installed.

The domain contains a server named Server2 that is configured for RADIUS accounting.

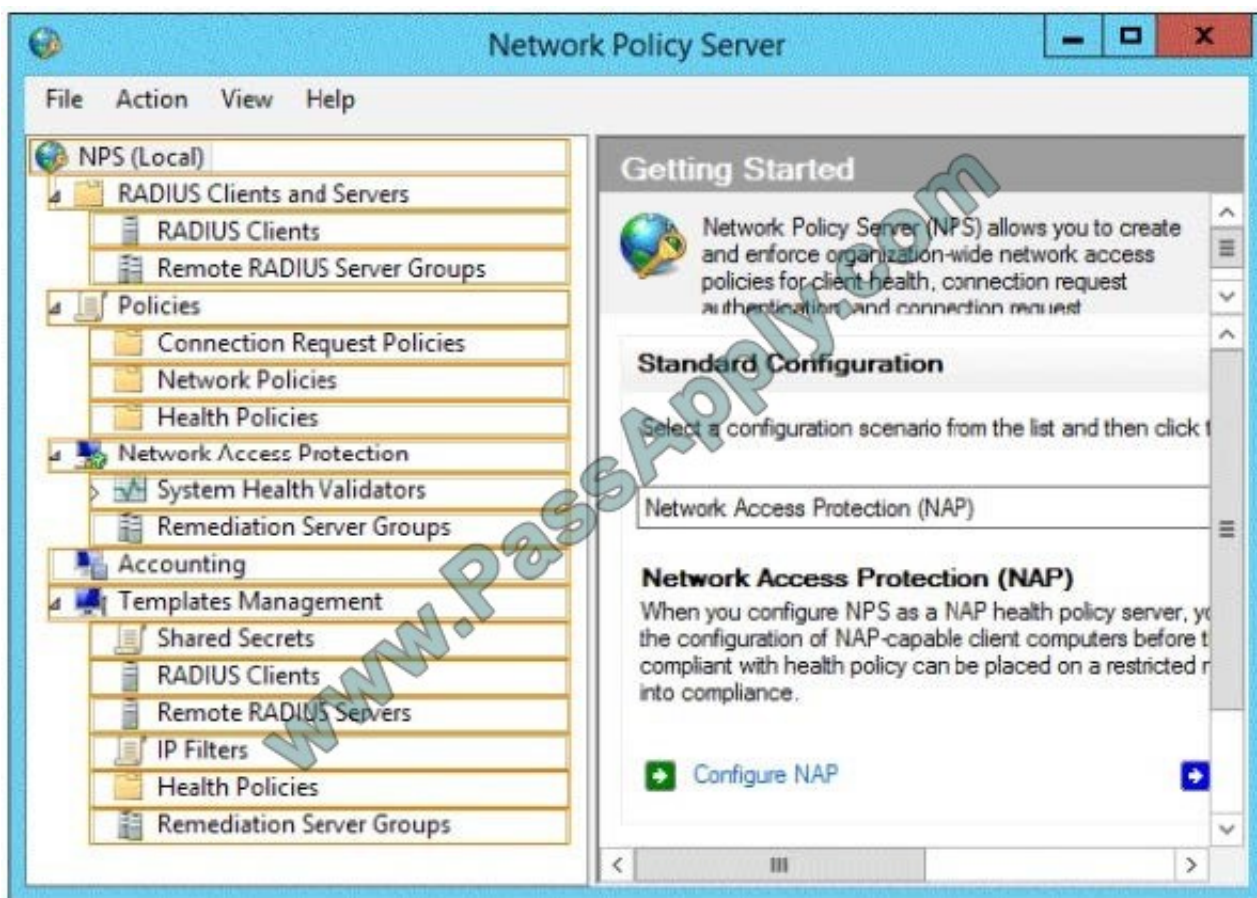
Server1 is configured as a VPN server and is configured to forward authentication requests to Server2.

You need to ensure that only Server2 contains event information about authentication requests from connections to Server1.

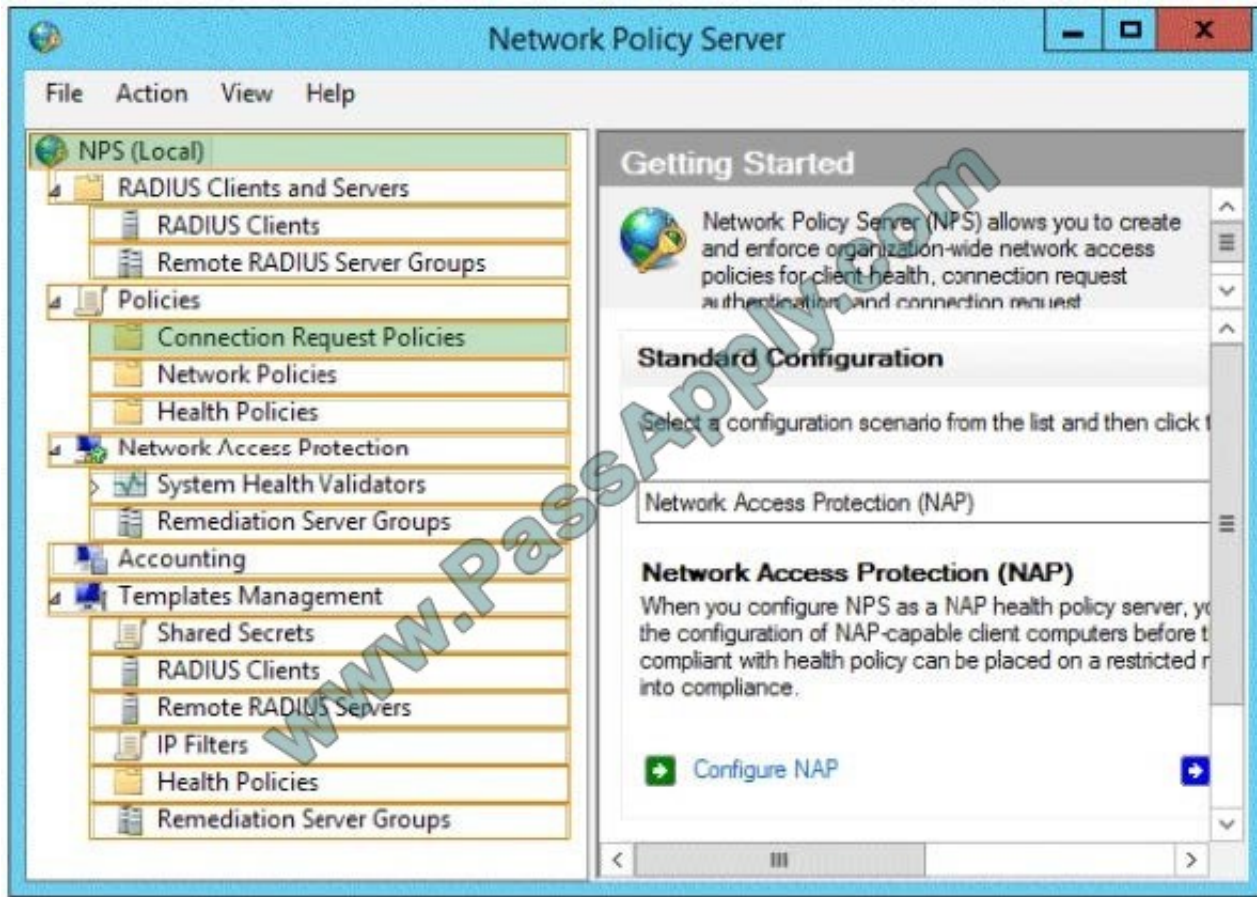
Which two nodes should you configure from the Network Policy Server console?

To answer, select the appropriate two nodes in the answer area.

Hot Area:



Correct Answer:



QUESTION 3

Your network contains one Active Directory domain named contoso.com. The forest functional level is Windows Server 2012. All servers run Windows Server 2012 R2. All client computers run Windows 8.1.

The domain contains 10 domain controllers and a read-only domain controller (RODC) named RODC01. All domain controllers and RODCs are hosted on a Hyper-V host that runs Windows Server 2012 R2.

You need to identify whether deleted objects can be recovered from the Active Directory Recycle Bin.

Which cmdlet should you use?

- A. Get-ADGroupMember
- B. Get-ADDomainControllerPasswordReplicationPolicy
- C. Get-ADDomainControllerPasswordReplicationPolicyUsage
- D. Get-ADDomain
- E. Get-ADOptionalFeature
- F. Get-ADAccountAuthorizationGroup

Correct Answer: E



Explanation: The Get-ADOptionalFeature cmdlet gets an optional feature or performs a search to retrieve multiple optional features from an Active Directory.

Example: Get-ADOptionalFeature '\\Recycle Bin Feature\\' Get the optional feature with the name '\\Recycle Bin Feature\\'.

Reference: Get-ADOptionalFeature

<https://technet.microsoft.com/en-us/library/ee617218.aspx>

QUESTION 4

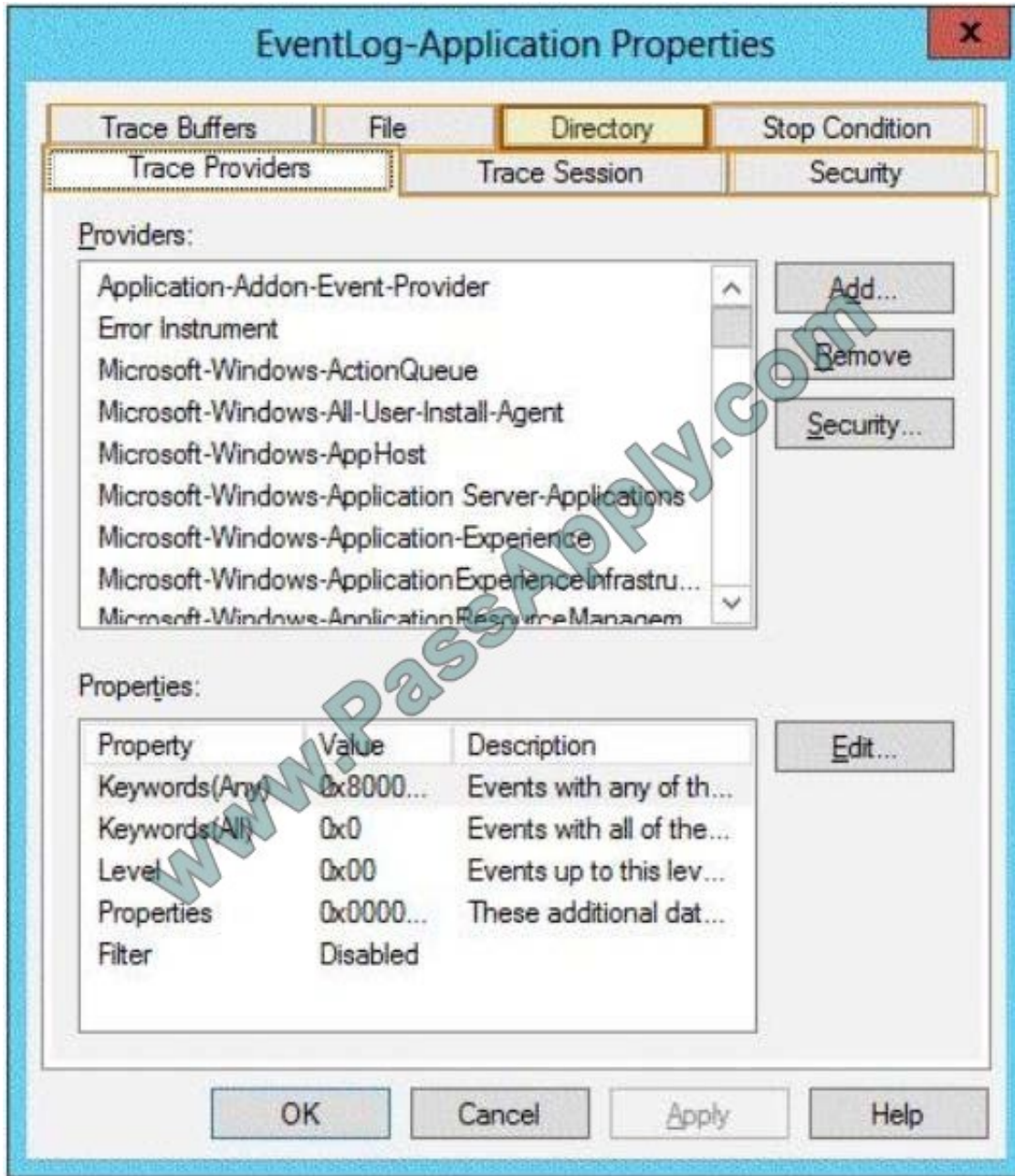
Your network contains an Active Directory domain named contoso.com. The domain contains a member server named Server1. Server1 runs Windows Server 2012 R2.

You enable the EventLog-Application event trace session.

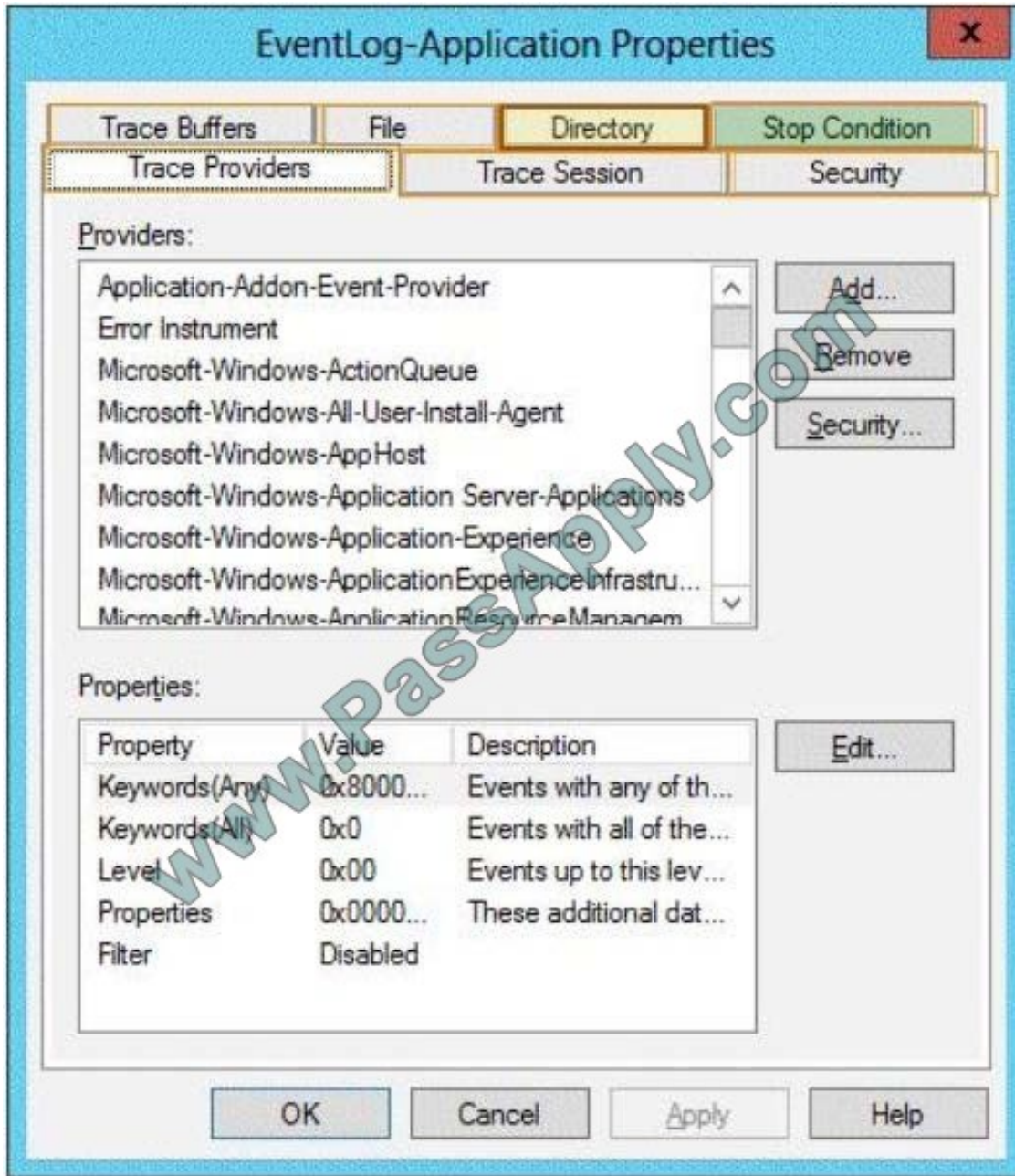
You need to set the maximum size of the log file used by the trace session to 10 MB.

From which tab should you perform the configuration? To answer, select the appropriate tab in the answer area.

Hot Area:



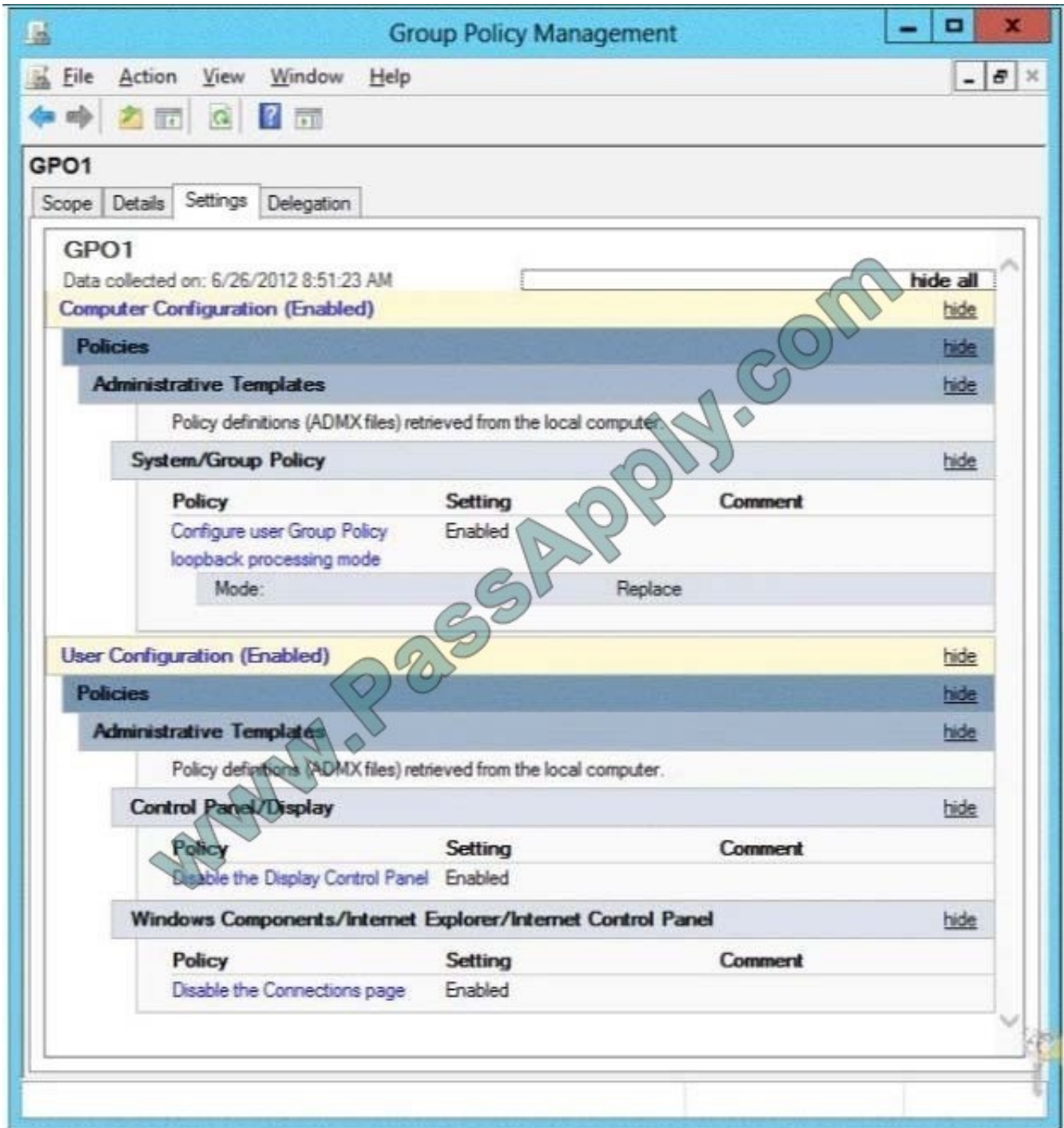
Correct Answer:



QUESTION 5

Your network contains an Active Directory domain named contoso.com. The domain contains an organizational unit (OU) named AllServers_OU.

You create and link a Group Policy object (GPO) named GPO1 to AllServer_OU. GPO1 is configured as shown in the exhibit. (Click the Exhibit button.)



d You need to ensure that GPO1 only applies to servers that have Remote Desktop Services (RDS) installed What should you configure?

- A. Item-level targeting
- B. Block Inheritance
- C. Security Filtering
- D. WMI Filtering

Correct Answer: D



Explanation: If you need to configure a Remote Desktop Server farm and need to setup some group policies that only applied to computers that are Remote Desktop Servers, there are a couple of obvious ways you could achieve this. 1) You could put your Remote Desktop Servers in a specific Organisational Unit and link your Group Policies there 2) You could create a WMI Filter to filter by name i.e. `SELECT * FROM Win32_ComputerSystem WHERE ((Name = `RDSERVER01`) OR (Name = `RDSERVER02`))` If you don't want to have to update the WMI Filter if you need to add more Remote Desktop Servers, you can use the following WMI Filter against the rootCIMV2TerminalServices Namespace: `Select * From Win32_TerminalServiceSetting Where TerminalServerMode=1`

<http://www.focusedit.co.uk/54-group-policy-wmi-filter-for-remote-desktop-server/>

<https://blogs.technet.microsoft.com/askds/2008/09/11/fun-with-wmi-filters-in-group-policy/>

QUESTION 6

Your network contains an Active Directory domain named contoso.com. All domain controllers run Windows Server 2012 R2. The domain contains 500 client computers that run Windows 8 Enterprise.

You implement a Group Policy central store.

You have an application named App1. App1 requires that a custom registry setting be deployed to all of the computers.

You need to deploy the custom registry setting. The solution must minimize administrator effort.

What should you configure in a Group Policy object (GPO)?

- A. The Software Installation settings
- B. The Administrative Templates
- C. An application control policy
- D. The Group Policy preferences

Correct Answer: D

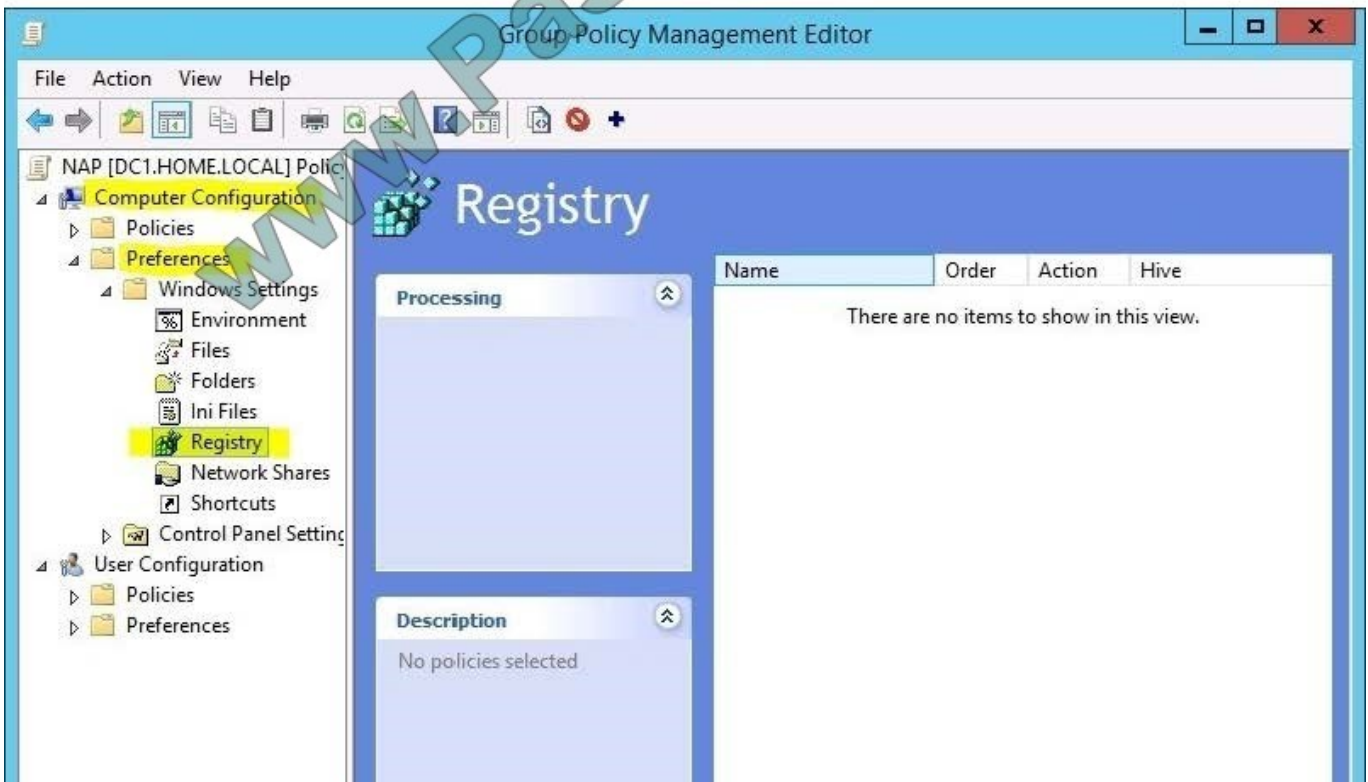
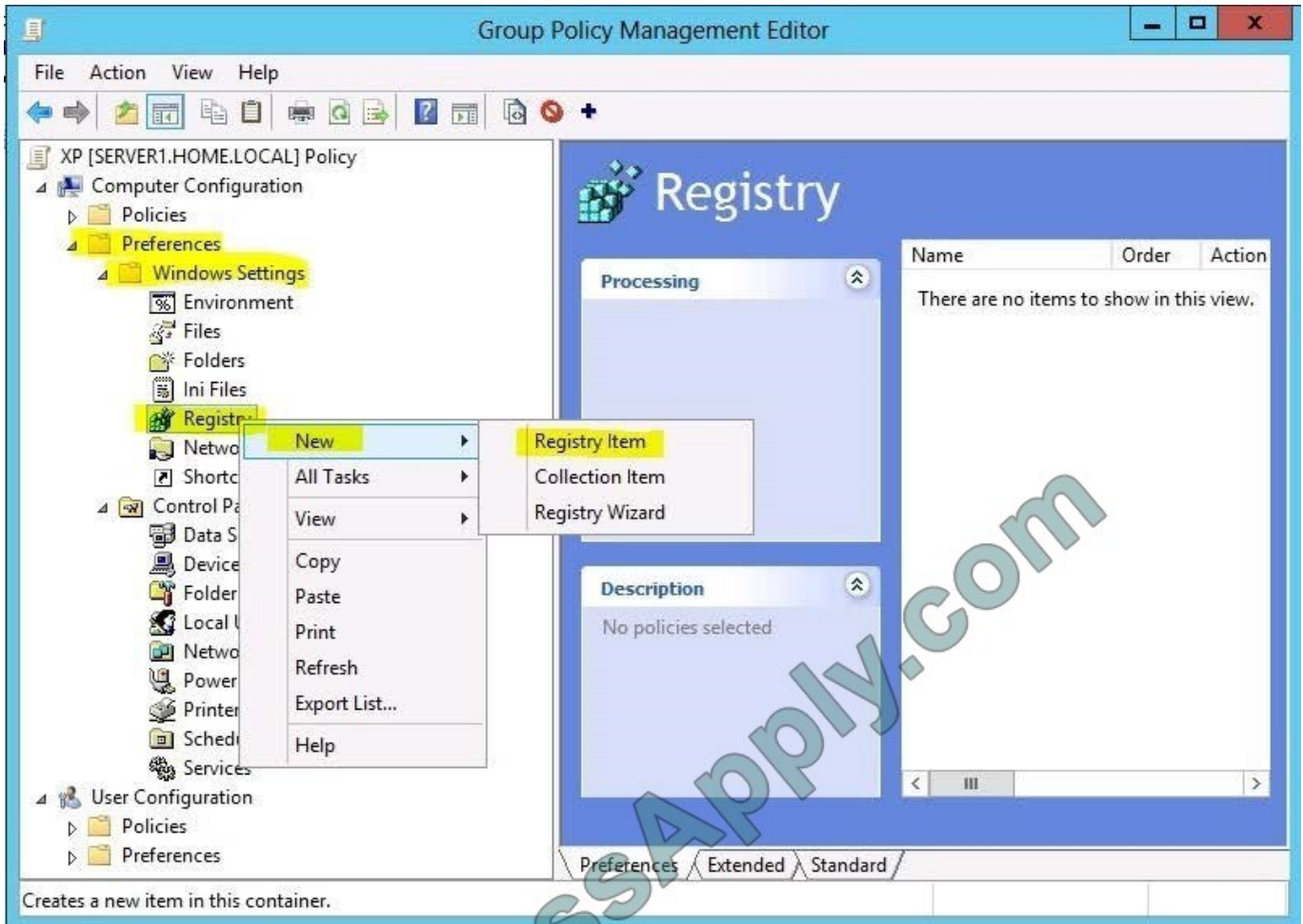
Open the Group Policy Management Console. Right-click the Group Policy object (GPO) that should contain the new preference item, and then click Edit. In the console tree under Computer Configuration or User Configuration, expand the Preferences folder, and then expand the Windows Settings folder. Right-click the Registry node, point to New, and select Registry Item. Group Policy preferences provide the means to simplify deployment and standardize configurations. They add to Group Policy a centralized system for deploying preferences (that is, settings that users can change later).

You can also use Group Policy preferences to configure applications that are not Group Policy-aware. By using Group Policy preferences, you can change or delete almost any registry setting, file or folder, shortcut, and more. You are not

limited by the contents of Administrative Template files. The Group Policy Management Editor (GPME) includes Group Policy preferences.

References:

<http://technet.microsoft.com/en-us/library/gg699429.aspx> <http://www.unidesk.com/blog/gpos-set-custom-registry-entries-virtual-desktops-disabling-machine-password>





QUESTION 7

You manage a server that runs Windows Server 2012 R2. The server has the Windows Deployment Services server role installed. You start a virtual machine named VM1 as shown in the exhibit. (Click the Exhibit button.)

```
Hyper-U
PXE Network Boot 09.14.2011
(C) Copyright 2011 Microsoft Corporation, All Rights Reserved.

CLIENT MAC ADDR: 00 15 5D 00 0F 13  GUID: 979708BF-C04B-4525-9FE0-C4150BB6C618
DHCP.-
```

You need to configure a pre-staged device for VM1 in the Windows Deployment Services console.

Which two values should you assign to the device ID? (Each correct answer presents a complete solution. Choose two.)

- A. 979708BFC04B45259FE0C4150BB6C618
- B. 979708BF-C04B-4525-9FE0-C4150BB6C618
- C. 00155D000F130000000000000000000000
- D. 00000000000000000000000000000000155D000F13
- E. 00000000-0000-0000-0000-C4150BB6C618

Correct Answer: BD

Use client computer\'s media access control (MAC) address preceded with twenty zeros or the globally unique identifier (GUID) in the format: {XXXXXXXX-XXXX-XXXX-XXX-XXXXXXXXXXXX}. Reference: <http://technet.microsoft.com/en-us/library/cc754469.aspx>

QUESTION 8

Your network contains an Active Directory domain named contoso.com. The domain contains three servers. The servers are configured as shown in the following table.

Server name	Role
Server1	Direct Access and VPN
Server2	File Server
Server3	Hyper-V

You need to ensure that end-to-end encryption is used between clients and Server2 when the clients connect to the network by using DirectAccess.



Which two actions should you perform? (Each correct answer presents part of the solution. Choose two.)

- A. From the Remote Access Management Console, reload the configuration.
- B. Add Server2 to a security group in Active Directory.
- C. Restart the IPsec Policy Agent service on Server2.
- D. From the Remote Access Management Console, modify the Infrastructure Servers settings.
- E. From the Remote Access Management Console, modify the Application Servers settings.

Correct Answer: BE

Unsure about these answers: A public key infrastructure must be deployed. Windows Firewall must be enabled on all profiles. ISATAP in the corporate network is not supported. If you are using ISATAP, you should remove it and use native IPv6. Computers that are running the following operating systems are supported as DirectAccess clients: Windows Server 2012 R2 Windows 8.1 Enterprise Windows Server 2012 Windows 8 Enterprise Windows Server 2008 R2 Windows 7 Ultimate Windows 7 Enterprise Force tunnel configuration is not supported with Kerberos authentication. Changing policies by using a feature other than the DirectAccess management console or Windows PowerShell cmdlets is not supported. Separating NAT64/DNS64 and IPHTTPS server roles on another server is not supported.

QUESTION 9

You have a DNS server named Server1 that has a Server Core Installation on Windows Server 2012 R2.

You need to view the time-to-live (TTL) value of a name server (NS) record that is cached by the DNS Server service on Server1.

What should you run?

- A. Show-DNSServerCache
- B. nslookup.exe
- C. ipconfig.exe /displaydns
- D. dnscacheuic.exe

Correct Answer: A

The Show-DNSServerCache shows all cached Domain Name System (DNS) server resource records in the following format: Name, ResourceRecordData, Time-to-Live (TTL).

QUESTION 10

You have a server that runs Windows Server 2012 R2.

You have an offline image named Windows2012.vhd that contains an installation of Windows Server 2012 R2.

You plan to apply several updates to Windows2012.vhd.



You need to mount Windows2012.vhd to H:\.

Which tool should you use?

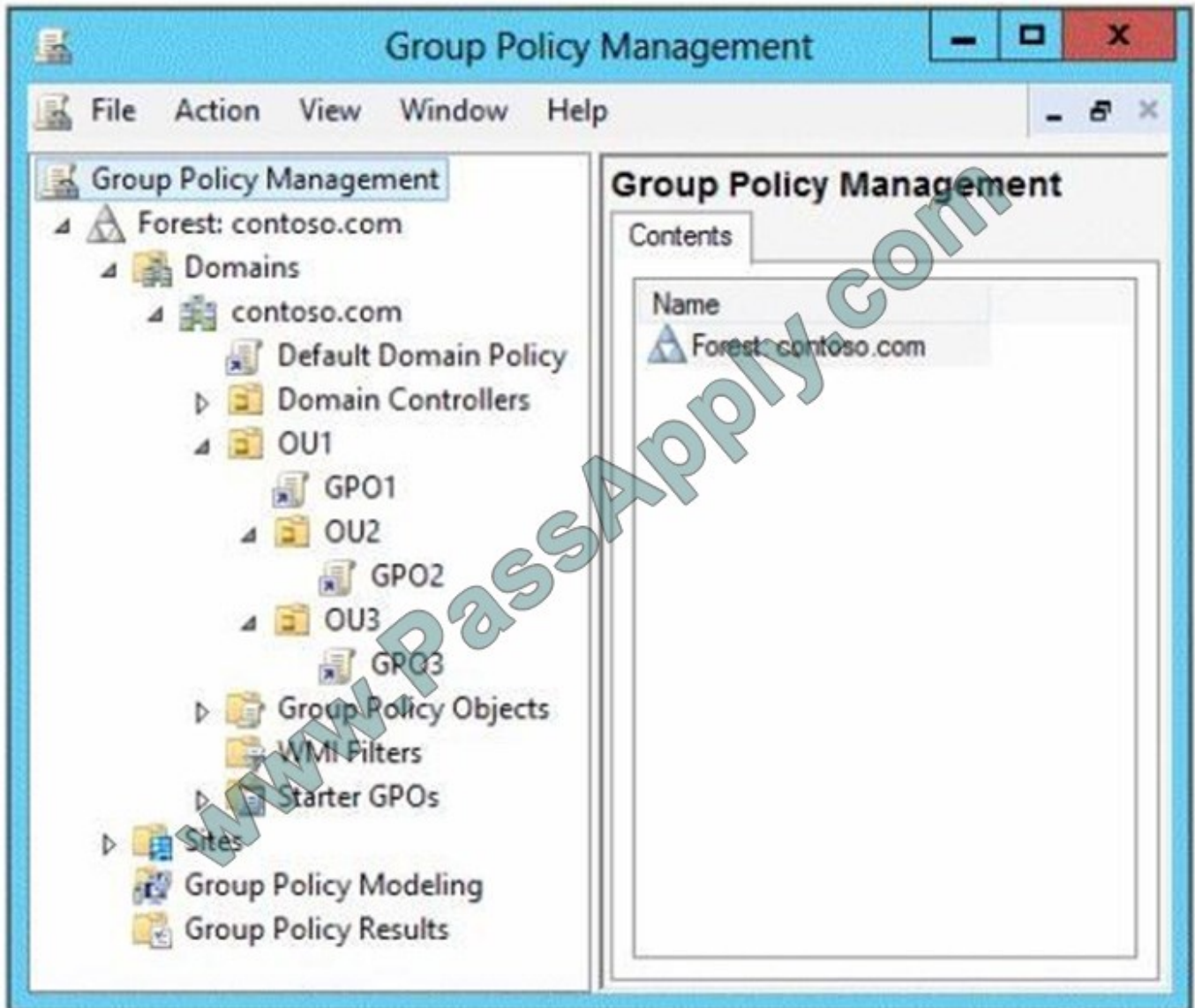
- A. Device Manager
- B. Server Manager
- C. Mountvol
- D. Diskpart

Correct Answer: D

References: <https://www.top-password.com/blog/mount-and-unmount-vhd-vhdx-from-command-line/>

QUESTION 11

Your network contains an Active Directory domain named contoso.com. All client computers run Windows 8.1. Group Policy objects (GPOs) are linked to the domain as shown in the exhibit. (Click the Exhibit button.)



GPO2 contains computer configurations only and GPO3 contains user configurations only.

You need to configure the GPOs to meet the following requirements:

Ensure that GPO2 only applies to the computer accounts in OU2 that have more than one processor.

Ensure that GPO3 only applies to the user accounts in OU3 that are members of a security group named SecureUsers.

Which setting should you configure in each GPO?

To answer, drag the appropriate setting to the correct GPO. Each setting may be used once, more than once, or not at all. You may need to drag the split bar between panes or scroll to view content.

Select and Place:



Settings	Answer Area
Enforced	GPO2 Setting
GPO Status	GPO3 Setting
WMI Filtering	
Security Filtering	

Correct Answer:

Settings	Answer Area
Enforced	GPO2 WMI Filtering
GPO Status	GPO3 Security Filtering

[https://technet.microsoft.com/en-us/library/cc732796\(v=ws.11\).aspx](https://technet.microsoft.com/en-us/library/cc732796(v=ws.11).aspx) [https://technet.microsoft.com/en-us/library/cc752992\(v=ws.11\).aspx](https://technet.microsoft.com/en-us/library/cc752992(v=ws.11).aspx)

QUESTION 12



Your network contains two Active Directory forests named contoso.com and adatum.com. The contoso.com forest contains a server named Server1.contoso.com. The adatum.com forest contains a server named server2. adatum.com. Both

servers have the Network Policy Server role service installed.

The network contains a server named Server3. Server3 is located in the perimeter network and has the Network Policy Server role service installed.

You plan to configure Server3 as an authentication provider for several VPN servers.

You need to ensure that RADIUS requests received by Server3 for a specific VPN server are always forwarded to Server1.contoso.com.

Which two should you configure on Server3? (Each correct answer presents part of the solution. Choose two.)

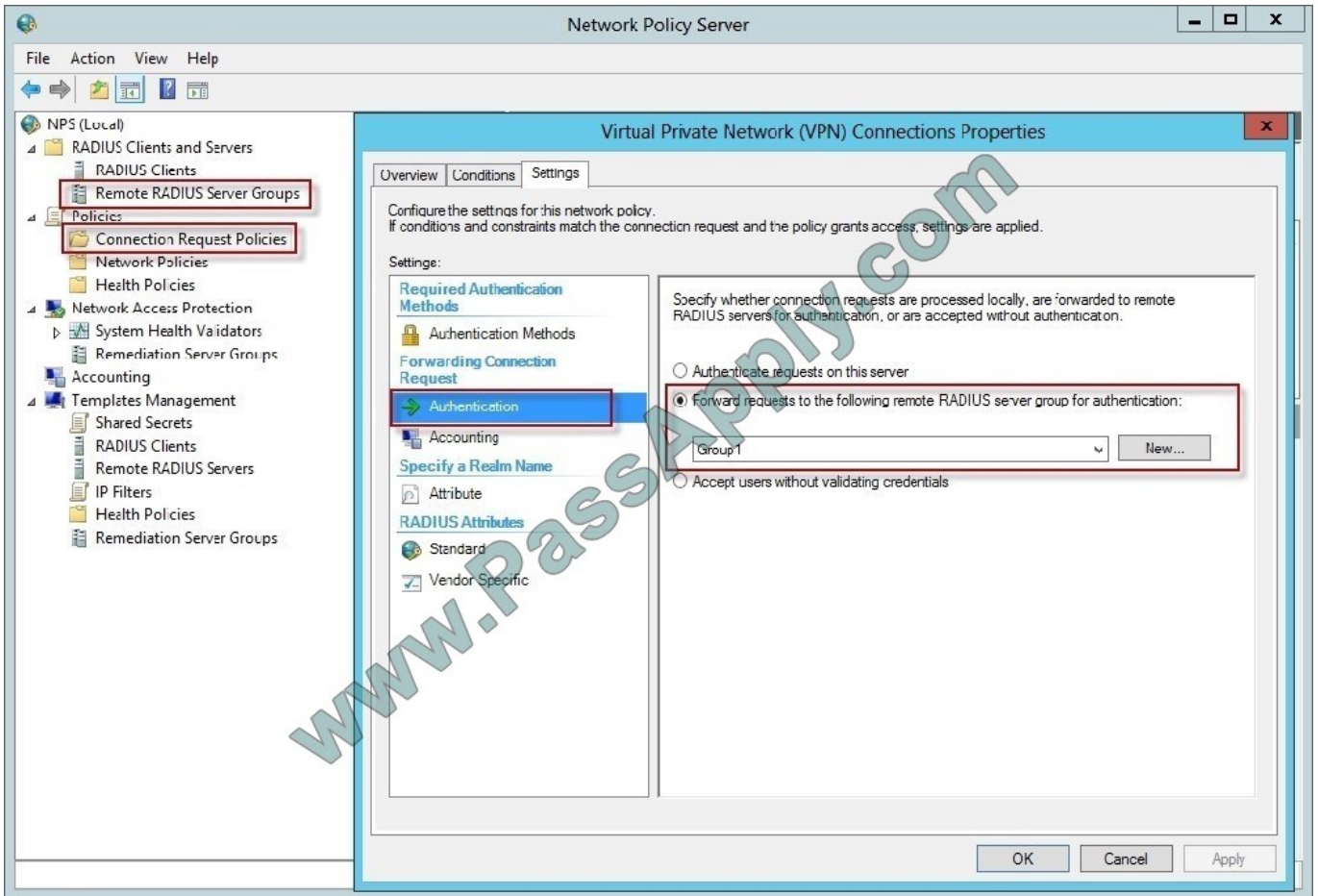
- A. Remediation server groups
- B. Remote RADIUS server groups
- C. Connection request policies
- D. Network policies
- E. Connection authorization policies

Correct Answer: BC

To configure NPS as a RADIUS proxy, you must create a connection request policy that contains all of the information required for NPS to evaluate which messages to forward and where to send the messages.

When you configure Network Policy Server (NPS) as a Remote Authentication Dial-In User Service (RADIUS) proxy, you use NPS to forward connection requests to RADIUS servers that are capable of processing the connection requests because they can perform authentication and authorization in the domain where the user or computer account is located. For example, if you want to forward connection requests to one or more RADIUS servers in untrusted domains, you can configure NPS as a RADIUS proxy to forward the requests to the remote RADIUS servers in the untrusted domain. To configure NPS as a RADIUS proxy, you must create a connection request policy that contains all of the information required for NPS to evaluate which messages to forward and where to send the messages.

When you configure a remote RADIUS server group in NPS and you configure a connection request policy with the group, you are designating the location where NPS is to forward connection requests.



References:

<http://technet.microsoft.com/en-us/library/cc754518.aspx> <http://technet.microsoft.com/en-us/library/cc754518.aspx>
<http://technet.microsoft.com/en-us/library/cc754518.aspx>

[70-411 PDF Dumps](#)

[70-411 VCE Dumps](#)

[70-411 Study Guide](#)



To Read the [Whole Q&As](#), please purchase the [Complete Version](#) from [Our website](#).

Try our product !

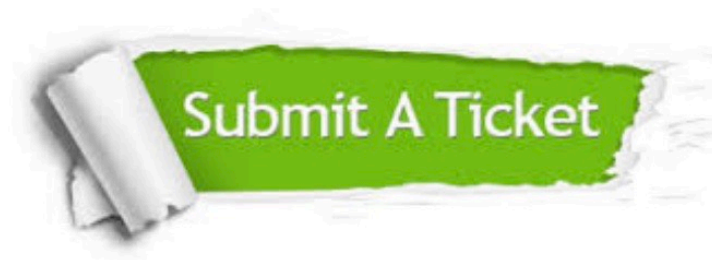
100% Guaranteed Success
100% Money Back Guarantee
365 Days Free Update
Instant Download After Purchase
24x7 Customer Support
Average 99.9% Success Rate
More than 800,000 Satisfied Customers Worldwide
Multi-Platform capabilities - [Windows](#), [Mac](#), [Android](#), [iPhone](#), [iPod](#), [iPad](#), [Kindle](#)

We provide exam PDF and VCE of Cisco, Microsoft, IBM, CompTIA, Oracle and other IT Certifications. You can view Vendor list of All Certification Exams offered:

<https://www.passapply.com/allproducts>

Need Help

Please provide as much detail as possible so we can best assist you.
To update a previously submitted ticket:



 <p>One Year Free Update Free update is available within One Year after your purchase. After One Year, you will get 50% discounts for updating. And we are proud to boast a 24/7 efficient Customer Support system via Email.</p>	 <p>Money Back Guarantee To ensure that you are spending on quality products, we provide 100% money back guarantee for 30 days from the date of purchase.</p>	 <p>Security & Privacy We respect customer privacy. We use McAfee's security service to provide you with utmost security for your personal information & peace of mind.</p>
---	---	--

Any charges made through this site will appear as Global Simulators Limited.
All trademarks are the property of their respective owners.
Copyright © passapply, All Rights Reserved.