



70-410^{Q&As}

Installing and Configuring Windows Server 2012

Pass Microsoft 70-410 Exam with 100% Guarantee

Free Download Real Questions & Answers **PDF** and **VCE** file from:

<https://www.passapply.com/70-410.html>

100% Passing Guarantee
100% Money Back Assurance

Following Questions and Answers are all new published by Microsoft
Official Exam Center

- ⚙ **Instant Download** After Purchase
- ⚙ **100% Money Back** Guarantee
- ⚙ **365 Days** Free Update
- ⚙ **800,000+** Satisfied Customers





QUESTION 1

Your network contains an Active Directory domain named contoso.com. All servers run Windows Server 2012 R2. All client computers run Windows 8.

The domain contains a security group named Group1.

You have a Group Policy object (GPO) named GP01. GPO1 is linked to the domain. You need to ensure that only the members of Group1 can run the applications shown in the following table.

Application name	Application file
App1	App1.com
App2	App2.js
App3	App3.appx

Which type of application control policy should you implement for each application? To answer, drag the appropriate rule types to the correct applications. Each rule type may be used once, more than once, or not at all. You may need to drag the split bar between panes or scroll to view content.

Select and Place:

Rule Type	Answer Area
Executable Rule	App1: Rule type
Packaged app Rule	App2: Rule type
Script Rule	App3: Rule type
Windows Installer Rule	

Correct Answer:

Rule Type	Answer Area
	App1: Executable Rule
	App2: Script Rule
	App3: Packaged app Rule
Windows Installer Rule	



QUESTION 2

You work as a senior administrator at Contoso.com. The Contoso.com network consists of a single domain named Contoso.com. All servers on the Contoso.com network have Windows Server 2012 R2 installed. You are running a training exercise for junior administrators. You are currently discussing the Windows Firewall with Advanced Security feature.

Which of the following is TRUE with regards to Windows Firewall with Advanced Security? (Choose all that apply.)

- A. It provides host-based, two-way network traffic filtering for a computer.
- B. It provides host-based, one-way network traffic filtering for a computer.
- C. It blocks unauthorized network traffic flowing into or out of the local computer.
- D. It only blocks unauthorized network traffic flowing into the local computer.
- E. It only blocks unauthorized network traffic flowing out of the local computer.

Correct Answer: AC

Windows Firewall with Advanced Security is an important part of a layered security model.

By providing host-based, two-way network traffic filtering for a computer, Windows Firewall with Advanced Security blocks unauthorized network traffic flowing into or out of the local computer. Windows Firewall with Advanced Security also

works with Network Awareness so that it can apply security settings appropriate to the types of networks to which the computer is connected. Windows Firewall and Internet Protocol Security (IPsec) configuration settings are integrated into a

single Microsoft Management Console (MMC) named important part of your network's Windows Firewall with Advanced Security, so Windows Firewall is also an isolation strategy.

QUESTION 3

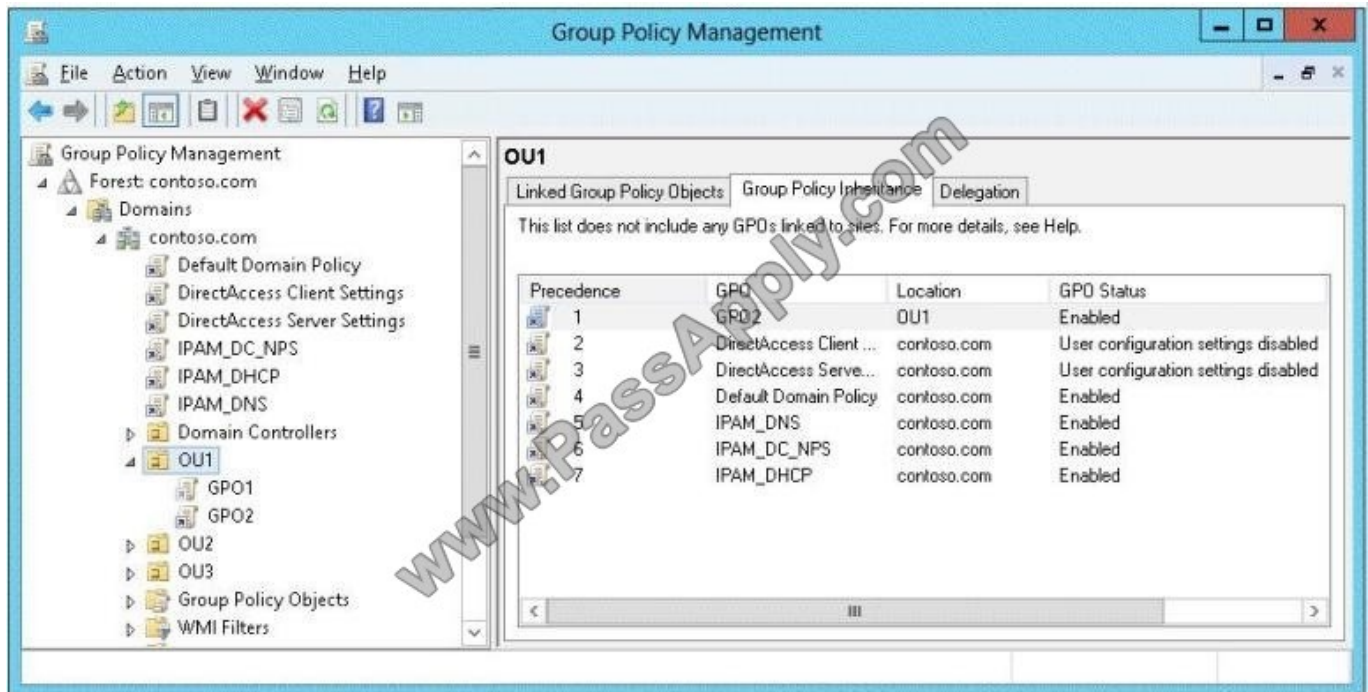
Your network contains an Active Directory domain named contoso.com.

All user accounts in the marketing department reside in an organizational unit (OU) named OU1.

You have a Group Policy object (GPO) named GPO1. GPO1 contains Folder Redirection settings. GPO1 has default permissions.

You discover that the Folder Redirection settings are not applied to the users in the marketing department.

You open Group Policy Management as shown in the exhibit. (Click the Exhibit button.)



You need to ensure that the Folder Redirection settings in GPO1 apply to the marketing users.

What should you do?

- A. Modify the Delegation settings of GPO1.
- B. Enable the link of GPO1.
- C. Enforce GPO1.
- D. Modify the link order of GPO1.

Correct Answer: C

QUESTION 4

You have a server named Server1 that runs Windows Server 2012 R2.

You need to create shares by using the New Share Wizard- The solution must meet the following requirements;

A share named Share1 must have access-based enumeration enabled for the files and folders in the share.

A share named Share2 must encrypt remote access to the files in the share.

Which share profile should you use for each share? To answer, drag the appropriate share profiles to the correct shares. Each share profile may be used once, more than once, or not at all. You may need to drag the split bar between panes

or scroll to view content.

Select and Place:



Share Profiles

SMB Share - Quick

SMB Share - Applications

NFS Share - Quick

NFS Share - Advanced

Answer Area

Share 1:

Share 2:

Correct Answer:

Share Profiles

SMB Share - Quick

SMB Share - Applications

NFS Share - Quick

NFS Share - Advanced

Answer Area

Share 1:

Share 2:

SMB Share - Quick

SMB Share - Quick

* Share1

To be able to share folders on Windows Server 2012, you must first use the Add Roles and Features wizard to install the File Server role service.

On the File and Storage Services page, select Shares and then click Tasks –andgt; New Share ... to begin the New Share Wizard.

On the Select the profile for this share page, select SMB Share – Quick and click the Next button.

On the Select the server and path for this share page, select the server on which to create the new share (local or remote server) and the volume on which to create the new shared folder. Click theNext button to continue.

On the Specify share name page, type the name of your new Share name and click the Next button to continue.

On the Configure share settings page, you will find advanced options for configuring Access-Based Enumeration (ABE), Offline folder caching, and Encryption of end-to-end SMB network traffic.



* Share2

SMB Encryption

Provides end-to-end encryption of SMB data and protects data from eavesdropping occurrences on untrusted networks.

Reference: Server Message Block Overview

<https://technet.microsoft.com/en-us/library/hh831795.aspx>

QUESTION 5

Your network contains three servers that run Windows Server 2012 R2. The servers are configured as shown in the following table. Server3 is configured to obtain an IP address automatically.

You need to ensure that Server3 only receives an IP address from Server1. The IP address must always be the same.

Which two tasks should you perform? (Each correct answer presents part of the solution. Choose two.)

Server name	Server role
Server1	Active Directory Domain Services DHCP Server DNS Server
Server2	Remote Access DHCP Server
Server3	File and Storage Services

- A. Create an exclusion on Server1.
- B. Create a filter on Server1.
- C. Create a reservation on Server2
- D. Create a reservation on Server1
- E. Create a filter on Server2.

Correct Answer: DE

QUESTION 6

Your company has a main office and four branch offices. The main office contains a server named Server1 that runs Windows Server 2012 R2. The IP configuration of each office is configured as shown in the following table.



Office name	Network ID	Router address
Main	172.16.0.0/12	172.31.255.254
Branch1	192.168.12.0/24	192.168.12.254
Branch2	192.168.13.0/24	192.168.13.254
Branch3	192.168.14.0/24	192.168.14.254
Branch4	192.168.15.0/24	192.168.15.254

You need to add a single static route on Server1 to ensure that Server1 can communicate with the hosts on all of the subnets. Which command should you run?

- A. route.exe add -p 192.168.0.0 mask 255.255.248.0 172.31.255.254
- B. route.exe add -p 192.168.12.0 mask 255.255.252.0 172.31.255.254
- C. route.exe add -p 192.168.8.0 mask 255.255.252.0 172.31.255.254
- D. route.exe add -p 192.168.12.0 mask 255.255.255.0 172.31.255.254

Correct Answer: B

QUESTION 7

You plan to deploy a DHCP server that will support four subnets. The subnets will be configured as shown in the following table.

Subnet name	Number of hosts
Subnet1	50
Subnet2	140
Subnet3	400
Subnet4	525

You need to identify which network ID you should use for each subnet. What should you identify? To answer, drag the appropriate network ID to the each subnet in the answer area.

Select and Place:



Network IDs	Answer Area	
10.10.1.0/26	Subnet1	Network ID
10.10.8.0/22	Subnet2	Network ID
10.10.16.0/25	Subnet3	Network ID
10.10.128.0/23	Subnet4	Network ID

Correct Answer:

Network IDs	Answer Area	
	Subnet1	10.10.1.0/26
	Subnet2	10.10.16.0/25
	Subnet3	10.10.128.0/23
	Subnet4	10.10.8.0/22

Explanation?

CIDR prefix-length	Dotted-Decimal	# Individual Addresses	# of Classful Networks
/13	255.248.0.0	512 K	8 Bs or 2048 Cs
/14	255.252.0.0	256 K	4 Bs or 1024 Cs
/15	255.254.0.0	128 K	2 Bs or 512 Cs
/16	255.255.0.0	64 K	1 B or 256 Cs
/17	255.255.128.0	32 K	128 Cs
/18	255.255.192.0	16 K	64 Cs
/19	255.255.224.0	8 K	32 Cs
/20	255.255.240.0	4 K	16 Cs
/21	255.255.248.0	2 K	8 Cs
/22	255.255.252.0	1 K	4 Cs
/23	255.255.254.0	512	2 Cs
/24	255.255.255.0	256	1 C
/25	255.255.255.128	128	1/2 C
/26	255.255.255.192	64	1/4 C
/27	255.255.255.224	32	1/8 C



References:

Exam Ref: 70-410: Installing and Configuring Windows Server 2012 R2, Chapter4: Deploying and configuring core network services, Objective 4.1: Configure IPv4 and IPv6 addressing, p.192, 196

QUESTION 8

You have a server named Server1 that runs a Server Core installation of Windows Server 2012 R2.

Server1 is configured to obtain an IPv4 address by using DHCP. You need to configure the IPv4 settings of the network connection on Server1 as follows:

IP address: 10.1.1.1

Subnet mask: 255.255.240.0

Default gateway: 10.1.1.254

What should you run?

- A. Set-NetIPInterface
- B. netcfg.exe
- C. New-NetIPAddress
- D. msconfig.exe
- E. Set-NetIPv4Protocol
- F. ipconfig.exe
- G. net.exe

Correct Answer: C

QUESTION 9

You have a print server named Server1 that runs Windows Server 2012 R2.

You discover that when there are many pending print jobs, the system drive occasionally runs out of free space.

You add a new hard disk to Server1. You create a new NTFS volume.

You need to prevent the print jobs from consuming disk space on the system volume.

What should you modify?

- A. The properties on the new volume
- B. The properties of the Print Spooler service
- C. The Print Server Properties



D. The properties of each shared printer

Correct Answer: C

Windows spools print jobs by default to the following directory as they are processed:

%SystemRoot%\SYSTEM32\POOL\PRINTERS.

It is possible for the administrator of a Windows print server to manually instruct Windows the location for placing the spool files, if for example there is a concern for disk space.

QUESTION 10

You work as a senior administrator at Contoso.com. The Contoso.com network consists of a single domain named Contoso.com. All servers on the Contoso.com network have Windows Server 2012 installed, and all workstations have Windows 8 installed.

You are running a training exercise for junior administrators. You are currently discussing the Always Offline Mode.

Which of the following is TRUE with regards to the Always Offline Mode? (Choose all that apply.)

- A. It allows for swifter access to cached files and redirected folders.
- B. To enable Always Offline Mode, you have to satisfy the forest and domain functional-level requirements, as well as schema requirements
- C. It allows for lower bandwidth usage due to users are always working offline.
- D. To enable Always Offline Mode, you must have workstations running Windows 7 or Windows Server 2008 R2.

Correct Answer: AC

There are no domain/forest/schema requirements, but clients must be running Windows 8/Windows Server 2012 or later. Offline Files have four modes of operation: Online Slow link Auto offline Manual offline Offline Files transition between the three modes online, slow link and auto offline depending on connection speed. The user can always override the automatic mode selection by manually switching to manual offline mode. To determine the connection speed two pings with default packet size are sent to the file server. If the average round-trip time is below 80 ms (Windows 7) or 35 ms (Windows 8), the connection is put into online mode, otherwise into slow link mode. The latency value of 35/80 ms is configurable through the Group Policy setting Configure slow-link mode. Reads, Writes and Synchronization In online mode, changes to files are made on the file server as well as in the local cache (this induces a performance hit ?see this article for details). Reads are satisfied from the local cache (if in sync). In slow link mode, changes to files are made in the local cache. The local cache is background-synchronized with the file server every 6 hours (Windows 7) or 2 hours (Windows 8), by default. This can be changed through the Group Policy setting Configure Background Sync. In auto offline mode, all reads and writes go to the local cache. No synchronization occurs. In manual offline mode, all reads and writes go to the local cache. No synchronization occurs by default, but background synchronization can be enabled through the Group Policy setting Configure Background Sync.

QUESTION 11

Your network contains an Active Directory domain named adatum.com. The network contains a member server that runs Windows Server 2012 R2.

You log on to the member server by using the built-in domain Administrator account.



When you run the Active Directory Administrative Center and attempt to move an organizational unit (OU) named OU-01, you receive an Access Denied message.

The permissions for OU-01 are shown in the exhibit. (Click the Exhibit button.)

OU-01

Organizational Unit
Managed By
Extensions

Country/Region:

TASKS SECTIONS

Extensions

COM+ Security Attribute Editor

Group or user names:

- Everyone
- SELF
- Authenticated Users
- SYSTEM
- Domain Admins (ADATUM\Domain Admins)

Add... Remove

Permissions for Domain Admins	Allow	Deny
Full control	<input checked="" type="checkbox"/>	<input type="checkbox"/>
Read	<input checked="" type="checkbox"/>	<input type="checkbox"/>
Write	<input checked="" type="checkbox"/>	<input type="checkbox"/>
Create all child objects	<input checked="" type="checkbox"/>	<input type="checkbox"/>
Delete all child objects	<input checked="" type="checkbox"/>	<input type="checkbox"/>

For special permissions or advanced settings, click Advanced.

[Learn about access control and permissions](#)

Advanced

You need to ensure that you can move OU-01. What should you do?

- A. Remove the Everyone access control list (ACL) of OU-01.
- B. Log on to a domain controller by using an account that is a member of the Domain Admins group.
- C. Take ownership of OU-01.
- D. Assign the Administrators group full control permission on OU-01.

Correct Answer: A

References: <https://www.oreilly.com/library/view/active-directory-cookbook/0596004648/ch05s08.html>

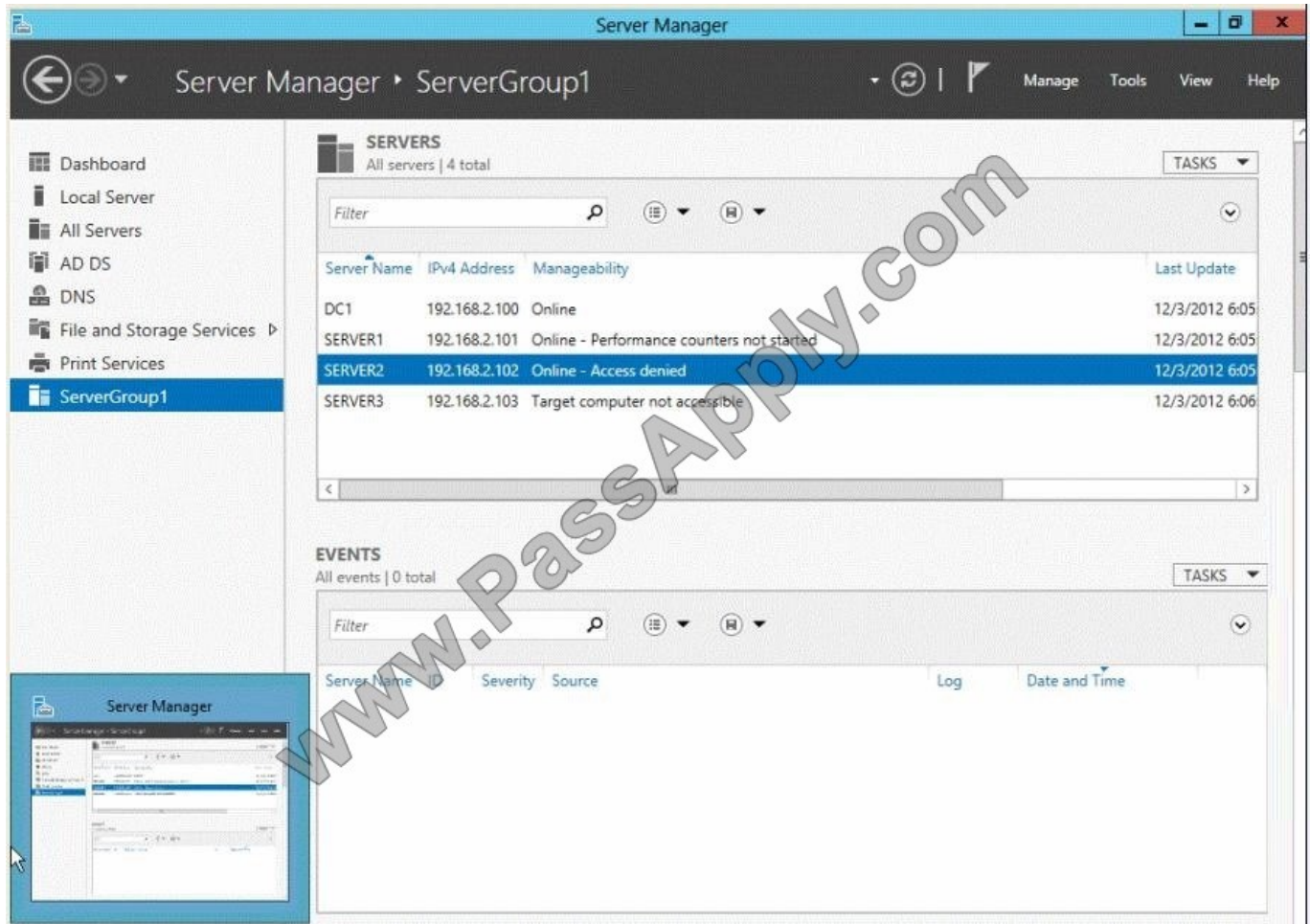
QUESTION 12

Your network contains an Active Directory domain named contoso.com. The domain contains three servers named Server1, Server2, and Server3.

You create a server group named ServerGroup1.



You discover the error message shown in the following exhibit. (Click the Exhibit button.)



You need to ensure that Server2 can be managed remotely by using Server Manager.

What should you do?

- A. On DC1, run the Enable-PSSessionConfiguration cmdlet.
- B. On Server2, run the Add-Computer cmdlet.
- C. On Server2 modify the membership of the Remote Management Users group.
- D. From Active Directory Users and Computers, add a computer account named Server2, and then restart Server2.

Correct Answer: C

This is a security issue. To be able to access Server2 remotely through Server Manager the user need to be a member of the Remote Management Users group. Note:

*

Name: BUILTIN\Remote Management Users

Description: A Builtin Local group. Members of this group can access WMI resources over management protocols (such as WS-Management via the Windows Remote Management service). This applies only to WMI namespaces that grant



access to the user.

*

Enable-ServerManagerStandardUserRemoting

Provides one or more standard, non-Administrator users access to event, service, performance counter, and role and feature inventory data for a server that you are managing by using Server Manager.

Syntax:

Parameter Set: Default

Enable-ServerManagerStandardUserRemoting [-User] [-Force] [-Confirm] [-WhatIf]

[]

Detailed Description

Provides one or more standard, non-Administrator users access to event, service, performance counter, and role and feature inventory data for a server that you are managing, either locally or remotely, by using Server Manager. The cmdlet

must be run locally on the server that you are managing by using Server Manager. The cmdlet works by performing the following actions:

Adds access rights for specified standard users to the root\cimv2 namespace on the local server (for access to role and feature inventory information).

Adds specified standard users to required user groups (Remote Management Users, Event Log Readers, and Performance Log Readers) that allow remote access to event and performance counter logs on the managed server.

Changes access rights in the Service Control Manager to allow specified standard users remote access to the status of services on the managed server.

Incorrect:

Not A: the Enable-PSSessionConfiguration. This is an advanced cmdlet that is designed to be used by system administrators to manage customized session configurations for their users.

[Latest 70-410 Dumps](#)

[70-410 Exam Questions](#)

[70-410 Braindumps](#)



VCE & PDF

PassApply.com

<https://www.passapply.com/70-410.html>

2021 Latest passapply 70-410 PDF and VCE dumps Download

To Read the [Whole Q&As](#), please purchase the [Complete Version](#) from [Our website](#).

Try our product !

100% Guaranteed Success

100% Money Back Guarantee

365 Days Free Update

Instant Download After Purchase

24x7 Customer Support

Average 99.9% Success Rate

More than 800,000 Satisfied Customers Worldwide

Multi-Platform capabilities - [Windows](#), [Mac](#), [Android](#), [iPhone](#), [iPod](#), [iPad](#), [Kindle](#)

We provide exam PDF and VCE of Cisco, Microsoft, IBM, CompTIA, Oracle and other IT Certifications. You can view Vendor list of All Certification Exams offered:

<https://www.passapply.com/allproducts>

Need Help

Please provide as much detail as possible so we can best assist you.

To update a previously submitted ticket:



 One Year Free Update <p>Free update is available within One Year after your purchase. After One Year, you will get 50% discounts for updating. And we are proud to boast a 24/7 efficient Customer Support system via Email.</p>	 Money Back Guarantee <p>To ensure that you are spending on quality products, we provide 100% money back guarantee for 30 days from the date of purchase.</p>	 Security & Privacy <p>We respect customer privacy. We use McAfee's security service to provide you with utmost security for your personal information & peace of mind.</p>
---	---	--

Any charges made through this site will appear as Global Simulators Limited.

All trademarks are the property of their respective owners.

Copyright © passapply, All Rights Reserved.