



# 70-348<sup>Q&As</sup>

Managing Projects and Portfolios with Microsoft PPM

## Pass Microsoft 70-348 Exam with 100% Guarantee

Free Download Real Questions & Answers **PDF** and **VCE** file from:

<https://www.passapply.com/70-348.html>

100% Passing Guarantee  
100% Money Back Assurance

Following Questions and Answers are all new published by Microsoft  
Official Exam Center

-  **Instant Download** After Purchase
-  **100% Money Back** Guarantee
-  **365 Days** Free Update
-  **800,000+** Satisfied Customers





### QUESTION 1

You are a project manager for an organization that uses Microsoft PPM. You plan each project in phases.

Team members must only see the assignments from a selected phase. All reports and project schedule views must reflect the entire project schedule, so the entire project is visible to the management team.

You need to configure Microsoft PPM.

What should you do?

- A. Set the Publish field to No for all tasks that need the assignments to be hidden from the team members.
- B. Delete the assignments that are not ready to be published to the team members.
- C. Set up a new security category for the management team.
- D. Set the booking type to Proposed for all tasks that need the assignments to be hidden from the team members

Correct Answer: A

---

### QUESTION 2

You are project manager for an organization that is uses Microsoft PPM. You need to create a project deliverable for the current project. What should you do?

- A. In Microsoft Project manage a deliverable.
- B. On the project site, edit the list to include the Task ID attribute.
- C. In Microsoft Project use Sync Deliverables,
- D. On the project site, create a new item in the Deliverables list

Correct Answer: A

---

### QUESTION 3

You use Microsoft PPM to manage projects. You plan to add risks and issues to a project For each of the following statements, select Yes if the statement is true. Otherwise, select No.

Hot Area:



Statement	Yes	No
To add risks and issues, open the project site that is connected to the project. Navigate to the list of risks or issues, and then add risks or issues.	<input type="radio"/>	<input type="radio"/>
To add risks and issues for a project, open the project in Microsoft Project, and then add risks or issues.	<input type="radio"/>	<input type="radio"/>
To add risks and issues for a project, select <b>Issues and Risks</b> in the quick launch menu.	<input type="radio"/>	<input type="radio"/>

Correct Answer:

Statement	Yes	No
To add risks and issues, open the project site that is connected to the project. Navigate to the list of risks or issues, and then add risks or issues.	<input checked="" type="radio"/>	<input type="radio"/>
To add risks and issues for a project, open the project in Microsoft Project, and then add risks or issues.	<input checked="" type="radio"/>	<input type="radio"/>
To add risks and issues for a project, select <b>Issues and Risks</b> in the quick launch menu.	<input type="radio"/>	<input checked="" type="radio"/>

#### QUESTION 4

You are a project manager for an organization that uses visibility projects in Microsoft PPM. For each of the following statements, select Yes if the statement is true. Otherwise, select No.

Hot Area:



Answer Area

Statement	Yes	No
You must publish the project to make the most current information available to others.	<input type="checkbox"/>	<input type="checkbox"/>
For projects that only use SharePoint task lists, you do not need to publish your project to make the most current information available to others.	<input type="checkbox"/>	<input type="checkbox"/>
Until you publish your changes, team members and others who access the project will see the last saved version of the project.	<input type="checkbox"/>	<input type="checkbox"/>

Correct Answer:

Answer Area

Statement	Yes	No
You must publish the project to make the most current information available to others.	<input checked="" type="checkbox"/>	<input type="checkbox"/>
For projects that only use SharePoint task lists, you do not need to publish your project to make the most current information available to others.	<input type="checkbox"/>	<input checked="" type="checkbox"/>
Until you publish your changes, team members and others who access the project will see the last saved version of the project.	<input checked="" type="checkbox"/>	<input type="checkbox"/>

### QUESTION 5

You are the project manager for a real estate management company. You are using Microsoft Project to manage the development of a new restaurant. The schedule includes a task named Equipment delivery.

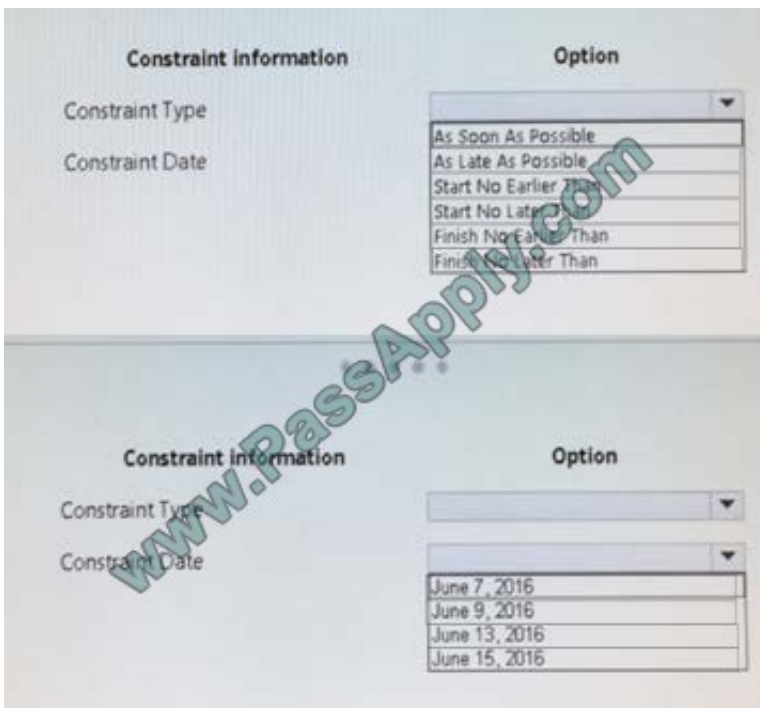
Your supplier states that they will start delivering stoves, refrigerators, and other equipment on June 9, 2016.

You need to modify the Equipment delivery task.

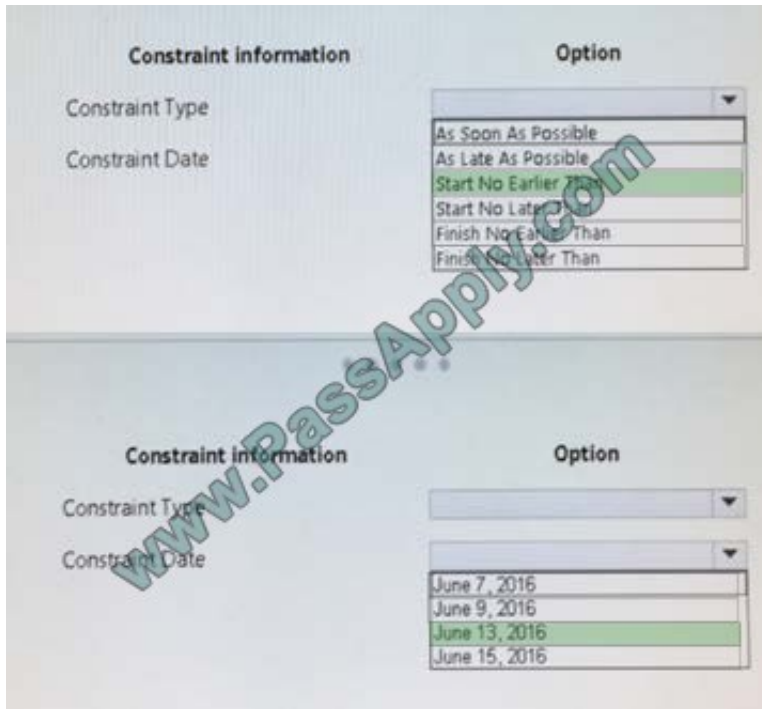
How should you configure the constraint for the task? To answer, select the appropriate option from each list in the answer area.



Hot Area:



Correct Answer:



#### QUESTION 6

You are a project manager in an organization that uses Microsoft PPM.

You have been given additional responsibilities managing existing projects created by another project manager.

When reviewing the project plan, you observe that some of the upcoming tasks are assigned to a generic resource.

You need to update the generic tasks to use defined resources

Which type of resource should you use?

- A. Material
- B. Cost
- C. Budget
- D. Work

Correct Answer: C

#### QUESTION 7

This question requires that you evaluate the underlined text to determine if it is correct.

To review the resource engagements requested by a project manager, the resource manager can navigate to the Resource Requests page and accept or reject the requests.

Review the underlined text If it makes the statement correct select "No change is needed." If the statement is incorrect



select the answer choice that makes the statement correct

- A. No change is needed.
- B. Capacity Planning page
- C. Resource Plan view in Microsoft Project
- D. Manage Users page

Correct Answer: A

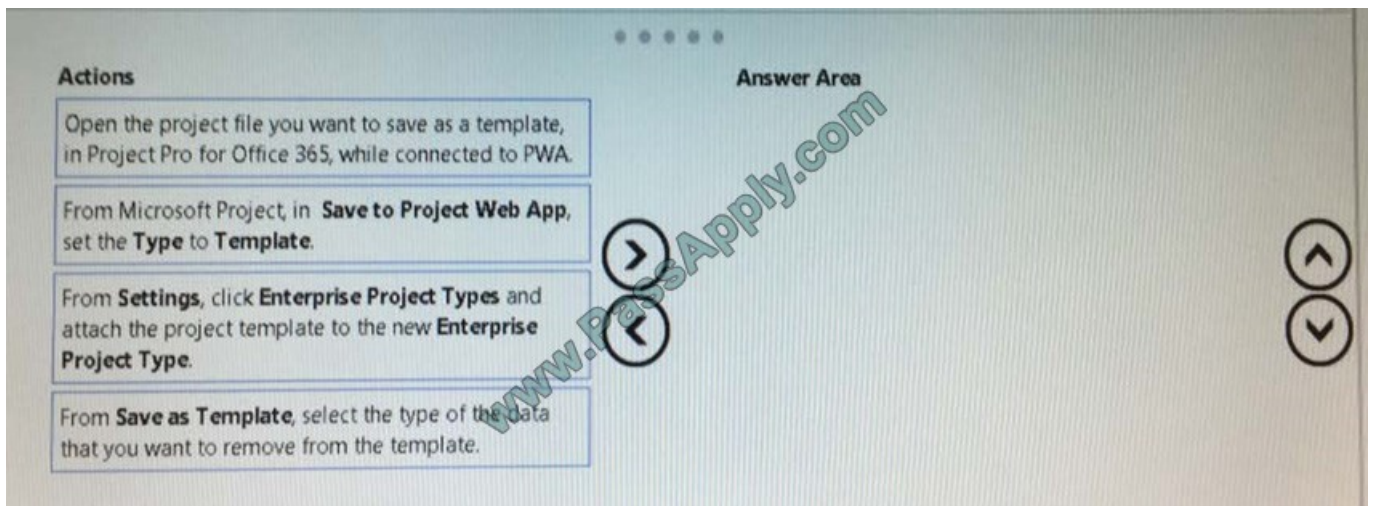
### QUESTION 8

You are the administrator for an organization that uses Microsoft PPM.

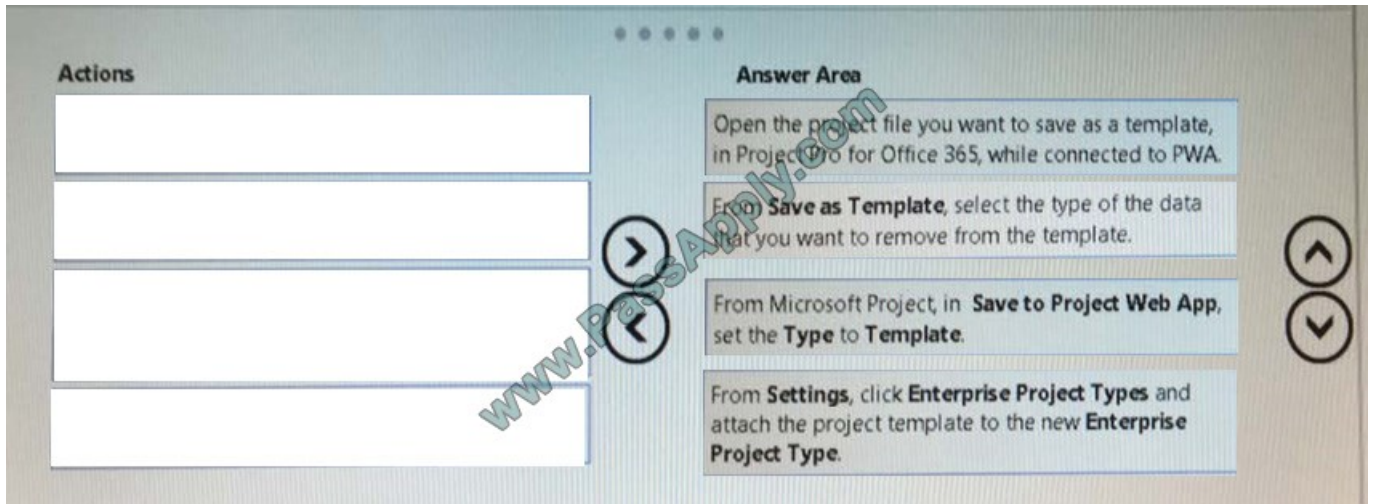
Users must be able to create projects by using predefined templates.

You need to create a new Enterprise Project Template and make it available for users

Select and Place:



Correct Answer:



### QUESTION 9

You are a project manager for an organization that is using Microsoft Project.

You have enabled Single Entry Mode and team members update their task status using timesheets.

You need to see how these updates impact your project before you approve the tasks.

What should you do?

- A. From Project Professional Backstage view, review updates.
- B. From Project Professional Tracking Gantt, review updates.
- C. From Project Professional Task Usage, review updates.
- D. Go to the PWA Approvals page and run the rules you have configured.

Correct Answer: A

### QUESTION 10

You are managing an e-commerce portal development project by using Microsoft PPM.

In order to communicate the status of your project to your stakeholders, you want to create a real time project status report using Microsoft Excel in Office Online Services.

You need to show information about your overall project status and late tasks on your status report What should you do?

- A. From the Report tab in Project Pro for Office 365, select the In Progress | Late Tasks report. Save the report as a .pdf file to the designated reports library in PWA.
- B. From the Project Details view in PWA, change the filter to the Late Tasks filter and copy and paste the tasks into Excel. Save to the designated reports library in PWA.





- C. From the English folder in the PWA Data Connections library, open the OData Task Data ode data connection file.
- D. From the Power Query tab in Excel, select the From other sources | From ODBC option to add data to the report

Correct Answer: D

---

#### QUESTION 11

You are a resource manager in an organization that uses Microsoft PPM for resource management You manage two teams, one local and one remote. Project managers are instructed to always submit resource requests based on generic

roles instead of named resources. Resource managers replace the generic resources with available named resources.

Project managers must not start work on projects that have generic resources assigned.

You need to replace proposed requests with committed, named resources.

Which three actions should you perform? Each correct answer presents part of the solution.

- A. Open resource requests.
- B. Select both the generic and named resource.
- C. Replace the generic resource with a named resource.
- D. Click Build Team.
- E. Select Replace, and accept and confirm the resource.

Correct Answer: ABD

---

#### QUESTION 12

You are the Microsoft PPM administrator for a large company. The IT manager uses four business drivers for prioritization. The priority of all four drivers is set at 25 percent.

The IT manager adds an additional business driver that has a priority value set to 30 percent

You need to create a new prioritization that includes the additional business driver.

What should you do?

- A. Create a new calculated prioritization. Select the drivers to priority.
- B. Create a new manual prioritization. Select the correct department, and then select the drivers to prioritize.
- C. Create a new manual prioritization. Select the drivers to prioritize, enter the value for each driver, and then choose to normalize.
- D. Create a new manual prioritization. Select the drivers to prioritize, and then rank the drivers sequentially.

Correct Answer: A

---



VCE & PDF

PassApply.com

<https://www.passapply.com/70-348.html>

2021 Latest passapply 70-348 PDF and VCE dumps Download

---

[70-348 PDF Dumps](#)

[70-348 VCE Dumps](#)

[70-348 Braindumps](#)



To Read the [Whole Q&As](#), please purchase the [Complete Version](#) from [Our website](#).

## Try our product !

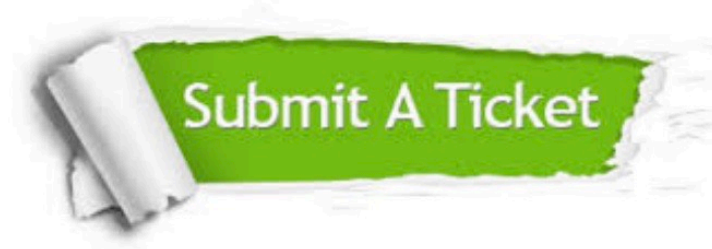
100% Guaranteed Success  
100% Money Back Guarantee  
365 Days Free Update  
Instant Download After Purchase  
24x7 Customer Support  
Average 99.9% Success Rate  
More than 800,000 Satisfied Customers Worldwide  
Multi-Platform capabilities - [Windows](#), [Mac](#), [Android](#), [iPhone](#), [iPod](#), [iPad](#), [Kindle](#)

We provide exam PDF and VCE of Cisco, Microsoft, IBM, CompTIA, Oracle and other IT Certifications. You can view Vendor list of All Certification Exams offered:

<https://www.passapply.com/allproducts>

## Need Help

Please provide as much detail as possible so we can best assist you.  
To update a previously submitted ticket:



 <p><b>One Year Free Update</b> Free update is available within One Year after your purchase. After One Year, you will get 50% discounts for updating. And we are proud to boast a 24/7 efficient Customer Support system via Email.</p>	 <p><b>Money Back Guarantee</b> To ensure that you are spending on quality products, we provide 100% money back guarantee for 30 days from the date of purchase.</p>	 <p><b>Security &amp; Privacy</b> We respect customer privacy. We use McAfee's security service to provide you with utmost security for your personal information &amp; peace of mind.</p>
---	---	--

Any charges made through this site will appear as Global Simulators Limited.  
All trademarks are the property of their respective owners.  
Copyright © passapply, All Rights Reserved.