

# **100%** Money Back **Guarantee**

**Vendor:** Microsoft

**Exam Code:** 70-323

**Exam Name:** Administering Office 365

**Version:** Demo

### QUESTION 1

Your company has a main office and a branch office. Both offices are directly connected to the Internet. The branch office connection to the Internet has limited bandwidth.

The company deploys Microsoft Lync Online.

You need to ensure that users in the branch office can only use instant messaging (IM) while using Lync Online. The users must be prevented from connecting to audio or video conferences.

What should you do?

- A. On the firewall at the branch office, block all of the outbound traffic on port 5061.
- B. From the Office 365 portal, modify the user properties of each user in the branch office.
- C. From the Office 365 portal, configure the license settings of each user in the branch office.
- D. Deploy only the Lync 2010 Attendee client to all of the users in the branch office.

**Correct Answer: B**

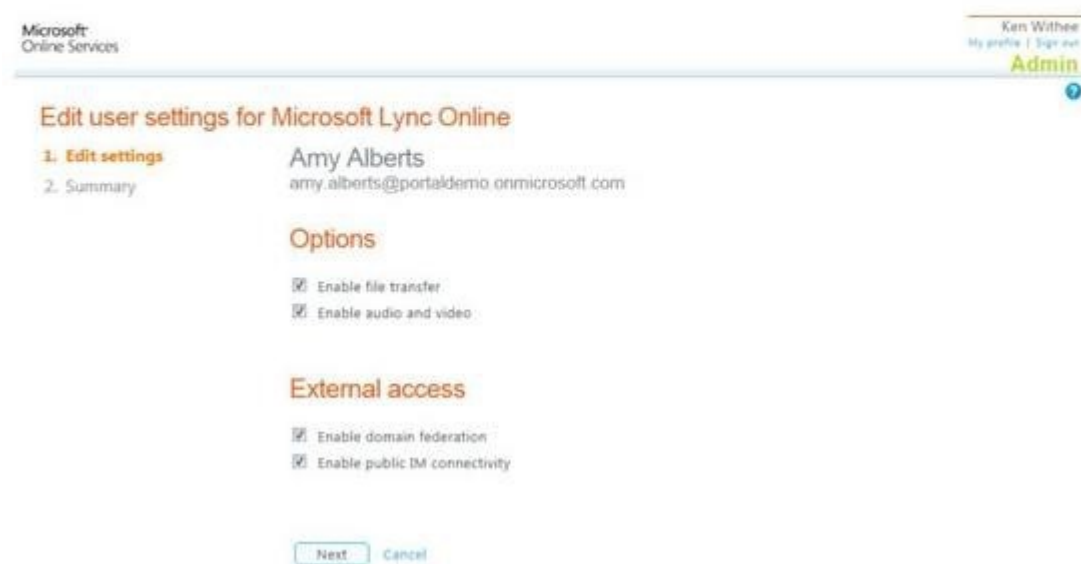
**Explanation**

**Explanation/Reference:**

Ref: <http://www.dummies.com/how-to/content/lync-online-management.html>

### User information screen of Lync Online

The user information screen of Lync Online allows you to configure options and external access for individual users. In particular, you can enable or disable file transfers, audio and video, domain federation, and public Instant Messaging (IM) connectivity.



### QUESTION 2

Your company has 100 user mailboxes.

The company purchases a subscription to Office 365 for professionals and small businesses.

You need to enable the Litigation Hold feature for each mailbox.

What should you do first?

- A. Purchase a subscription to Office 365 for midsize business and enterprises.
- B. Enable audit logging for all of the mailboxes.
- C. Modify the default retention policy.
- D. Create a service request.

**Correct Answer: A**

**Explanation**

**Explanation/Reference:**

Ref: <http://blogs.technet.com/b/lystavlenn/archive/2011/09/23/office-365-comparing-p-and-e-plans.aspx> <http://community.office365.com/en-us/w/exchange/exchange-online-faq.aspx>

### QUESTION 3

Your company has an Office 365 subscription.

You need to add the label "External" to the subject line of each email message received by your organization from an external sender.

What should you do?

- A. From the Exchange Control Panel, add a MailTip.
- B. From the Forefront Online Protection Administration Center, set the footer for outbound email.
- C. Run the Enable-InboxRule cmdlet.
- D. From the Exchange Control Panel, run the New Rule wizard.

**Correct Answer: D**

**Explanation**

**Explanation/Reference:**

Ref: <http://help.outlook.com/en-us/140/ms.exch.ecp.newtransportrule.aspx>

### QUESTION 4

You are the administrator for a company named Tailspin Toys. The company uses the tailspintoys.com SMTP domain. All mailboxes are hosted on Office 365.

From the Internet, customers send warranty questions to Tailspin Toys by sending an email message to a shared mailbox named Warranty. The Warranty mailbox has the warranty@tailspintoys.com SMTP address.

The service manager reports that many email orders sent to warranty@tailspintoys.com are identified as spam.

You need to ensure that all of the messages sent by the customers arrive in the Warranty mailbox.

What should you do?

- A. From the Forefront Online Protection Administration Center, enable Directory-Based Edge Blocking.
- B. From the Forefront Online Protection Administration Center, create a new policy rule.
- C. From Windows PowerShell, run the New TransportRule cmdlet and specify the - exceptifheadercontainswords parameter.
- D. From Windows PowerShell, run the Set-ContentFilterConfig cmdlet and specify the - bypassedrecipients parameter.

**Correct Answer: D**  
**Explanation**

**Explanation/Reference:**  
Ref: <http://technet.microsoft.com/en-us/library/aa996791.aspx>

#### QUESTION 5

Your company has an Office 365 subscription.

You create a new retention policy that contains several retention tags. A user named Test5 has a client computer that runs Microsoft Office Outlook 2007. You install Microsoft Outlook 2010 on the client computer of Test5. Test5 reports that the new retention tags are unavailable from Outlook 2010. You verify that other users can use the new retention tags.

You need to ensure that the new retention tags are available to Test5 from Outlook 2010.

What should you do?

- A. Instruct Test5 to repair the Outlook profile.
- B. Modify the retention policy tags.
- C. Run the Set-Mailbox cmdlet.
- D. Force directory synchronization.

**Correct Answer: A**  
**Explanation**

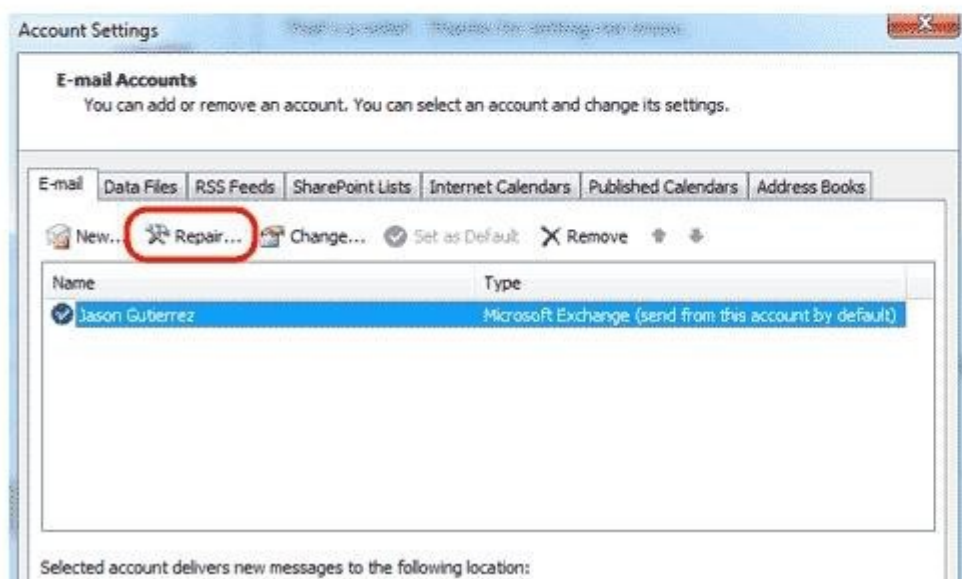
**Explanation/Reference:**  
Ref: <http://emds.unt.edu/ProfileRepair>

## Repairing your Outlook Profile

[m.unt](#) [Outlook 2010](#) [Outlook 2007](#) [Windows](#)

This tutorial has been created to help those customers that may need help with applying our new Exchange 2010 server settings.

We have been preparing to migrate to Exchange 2010, from Exchange 2007, and on the weekend of March 18-19 we deployed new servers to handle the task of routing email. We expect that there will be instances where your Outlook mail application will have trouble connecting to the new server. The following instructions will help you resolve this issue.



#### QUESTION 6

Your company has a subscription to Office 365 for midsize business and enterprises. The company uses Microsoft Lync Online.

You need to open ports on the network firewall to enable all of the features of Lync Online.

Which port or ports should you open? (Each correct answer presents part of the solution. Choose all that apply.)

- A. inbound TCP 443
- B. outbound TCP 5061
- C. outbound UDP 3478

- D. outbound TCP 443
- E. outbound UDP 50000 to outbound UDP 59999
- F. inbound TCP 8080

**Correct Answer:** CDE  
**Explanation**

**Explanation/Reference:**  
 Explanation/Reference:  
 Ref: <http://support.microsoft.com/kb/2409256>

Additionally, the following ports must be open in the external firewall.

Port	Protocol	Direction	Usage
443	STUN/TCP	Outgoing	Audio, video, application sharing sessions
443	PSOM/TLS	Outgoing	Data sharing sessions
3478	STUN/UDP	Outgoing	Audio, video sessions
5223	TCP	Outgoing	Lync Mobile push notifications
50000 – 59999	RTP/UDP	Outgoing	Audio, video sessions

**QUESTION 7**

Your company has a hybrid deployment of Office 365.

You need to create a group. The group must have the following characteristics:

- Group properties are synchronized automatically.
- Group members have the ability to control which users can send email messages to the group.

What should you do?

- A. Create a distribution group and configure the Mail Flow Settings.
- B. Create a dynamic distribution group.
- C. Create a new role group.
- D. Create a distribution group and configure the Membership Approval settings.

**Correct Answer:** A  
**Explanation**

**Explanation/Reference:**  
 Explanation:  
 Ref: <http://technet.microsoft.com/en-us/library/bb125178.aspx>

**QUESTION 8**

Your company has a hybrid deployment of Office 365.

You need to verify whether free/busy information sharing with external users is configured. Which Windows PowerShell cmdlet should you use?

- A. Test-OutlookConnectivity
- B. Test-FederationTrust
- C. Get-OrganizationRelationship
- D. Get-MSOLDomainFederationSettings

**Correct Answer:** C  
**Explanation**

**Explanation/Reference:**  
 Explanation:  
 Ref: <http://technet.microsoft.com/en-us/library/ee332357.aspx>

Use the **Get-OrganizationRelationship** cmdlet to retrieve settings for an organization relationship that has been created for federated sharing with other federated Exchange organizations or for hybrid deployments with Exchange Online.

For information about the parameter sets in the Syntax section below, see [Syntax](#).

▷ Syntax

▲ Examples

▲ EXAMPLE 1

This example retrieves the organization relationship settings for Contoso using the *Identity* parameter.

```
Get-OrganizationRelationship -Identity Contoso
```

**QUESTION 9**

Your company has an Office 365 subscription.

A user named User1 has a mailbox.

You need to ensure that all of the email messages sent and received by User1 are accessible to the audit department for 60 days, even if User1 permanently deletes the messages.



What should you do?

- A. Run the Set-MailboxDatabase cmdlet and specify the deleteditemretention parameter.
- B. Run the Set-Mailbox cmdlet and specify the litigationholdenabled parameter.
- C. Run the Set-Mailbox cmdlet and specify the singleitemrecoveryenabled parameter.
- D. Run the Set-MailboxDatabase cmdlet and specify the eventhistoryretentionperiod parameter.

**Correct Answer: B**  
**Explanation**

**Explanation/Reference:**  
Ref: <http://technet.microsoft.com/en-us/library/dd979797.aspx>

**QUESTION 10**

Your company has a Microsoft Exchange Server 2003 organization.

Users access their mailbox by using RPC over HTTP and Exchange ActiveSync.

You purchase an Office 365 subscription.

From the Office 365 portal, you create and verify the accepted domain of the company.

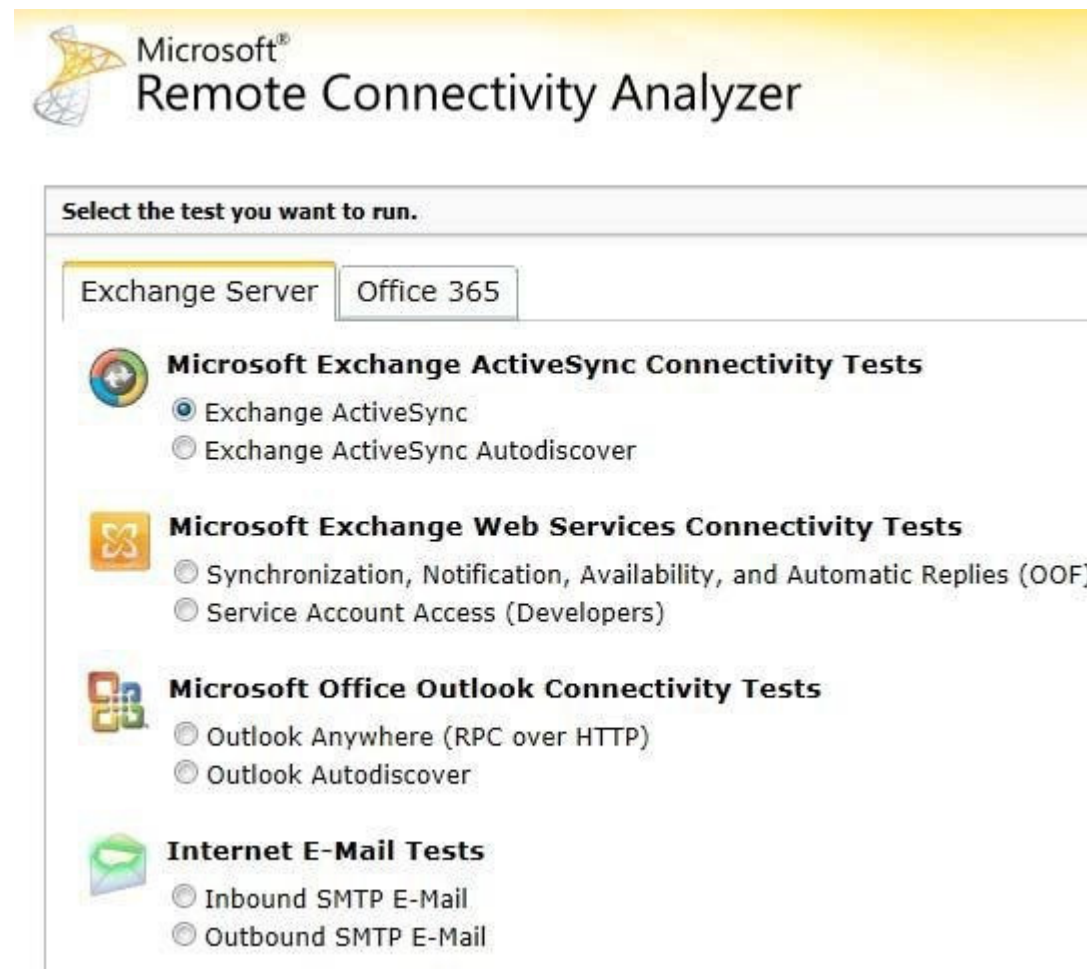
From the Exchange Control Panel, you attempt to migrate all of the mailboxes to Microsoft Exchange Online and you receive an error message indicating that the remote server is unavailable.

You need to identify what prevents the mailboxes from migrating.  
Which tool should you use?

- A. the Microsoft Remote Connectivity Analyzer
- B. the Exchange Server Deployment Assistant
- C. the Office 365 Deployment Readiness Tool
- D. the Microsoft Online Services Directory Synchronization Configuration Wizard

**Correct Answer: A**  
**Explanation**

**Explanation/Reference:**  
Explanation:  
Ref: <https://www.testexchangeconnectivity.com/>



**QUESTION 11**

Your company uses Office 365.

You need to prevent users from initiating remote wipes of mobile devices by using the Office 365 portal. What should you modify?

- A. the Outlook Web App mailbox policy
- B. the Exchange ActiveSync device policy
- C. the default role assignment policy
- D. the Exchange ActiveSync Access settings

**Correct Answer: B**  
**Explanation**

**Explanation/Reference:**  
Explanation:  
Ref: <http://www.itproportal.com/2012/06/01/phone-protection-administrator/>

**QUESTION 12**

Your company has an Exchange Server 2010 Service Pack 1 (SP1) organization and a hybrid deployment of Office 365.

Microsoft Exchange Server on-premises users report that they cannot view the free/busy information of Microsoft Exchange Online users.

You suspect a certificate problem.

You need to identify whether a certificate problem is causing the issue.

Which PowerShell cmdlet should you use?

- A. Test-FederationTrust
- B. Test-MRSHealth
- C. Test-SystemHealth
- D. Test-CasConnectionUser

**Correct Answer: A**

**Explanation**

**Explanation/Reference:**

Ref: <http://technet.microsoft.com/en-us/library/dd979787>

**QUESTION 13**

This question is part of a series of questions that use the same set of answer choices. Each answer choice may be used once, more than once, or not at all.

Your company has an intranet site that is hosted on Microsoft SharePoint Online. Users frequently create shortcuts to documents stored in the intranet site. The users report that when they rename a document, the shortcut to the document becomes invalid.

You need to ensure that when a user renames a document, the link to the document remains valid.

Which feature should you use?

- A. SharePoint Server Enterprise Site Collection Features
- B. Microsoft Office Web Apps
- C. Metadata Navigation and Filtering
- D. document ID
- E. in-place record management
- F. Reporting
- G. Content Organizer
- H. Workflows
- I. SharePoint Server Publishing Infrastructure
- J. Document Sets
- K. Library and Folder Based Retention
- L. Content Type Syndication Hub

**Correct Answer: D**

**Explanation**

**Explanation/Reference:**

Explanation/Reference:

<http://www.sharepointbriefing.com/spcode/article.php/3920006/Avoid-Broken-Links-with-SharePoints-Documents-Document-ID-Tool.htm>

In SharePoint 2007 if you rename or move a document then all the existing links to it will be broken. Naturally, this leads to angry users and headaches for IT support and simply put, it affects productivity, especially if happens often. With SharePoint 2010 this issue is resolved by the introduction of Document ID functionality. Basically, each document gets a unique ID that, regardless of its location, remains the same. This means that when you move or rename a document this ID will not change. So you end up with a static or permanent link to your documents. You will see later in this tip how this unique ID is used in a special URL to access the document.

Let's see how you can configure and use Document IDs in SharePoint 2010.

1. Browse to your SharePoint site and navigate to the site settings page. Click on the Site Collection Features link located under Site Collection Administration section. Locate the Document ID Service and click Activate.

**QUESTION 14**

This question is part of a series of questions that use the same set of answer choices. Each answer choice may be used once, more than once, or not at all.

Your company has an intranet site that is hosted on Microsoft SharePoint Online.

You need to ensure that users can upload Access databases to the site and modify the Access databases directly from a web browser.

Which feature should you use?

- A. SharePoint Server Publishing Infrastructure
- B. Microsoft Office Web Apps
- C. in-place record management
- D. SharePoint Server Enterprise Site Collection Features
- E. Document Sets
- F. Content Type Syndication Hub
- G. Reporting
- H. Metadata Navigation and Filtering
- I. Workflows
- J. Library and Folder Based Retention
- K. Content Organizer
- L. document ID

**Correct Answer: D**

**Explanation**

**Explanation/Reference:**

Ref: <http://sharepointfordeveloper.blogspot.co.uk/2012/02/sharepoint-2010-access-services.html>

## SharePoint 2010 Access Services

This feature included in the SharePoint Server Enterprise License.

Using Access Services in SharePoint the prerequisites are.

- System must install on Microsoft Access 2010.



### QUESTION 15

This question is part of a series of questions that use the same set of answer choices. Each answer choice may be used once, more than once, or not at all.

Your company has an intranet site that is hosted on Microsoft SharePoint Online.

You plan to create a document library that will have 10 content types.

You need to configure the document library so that when users upload a document that uses a specific content type, the document moves to another document library automatically.

Which feature should you use?

- A. Content Type Syndication Hub
- B. Reporting
- C. SharePoint Server Enterprise Site Collection Features
- D. document ID
- E. in-place record management
- F. Metadata Navigation and Filtering
- G. Library and Folder Based Retention
- H. Workflows
- I. Document Sets
- J. Microsoft Office Web Apps
- K. Content Organizer
- L. SharePoint Server Publishing Infrastructure

**Correct Answer:** K

**Explanation**

**Explanation/Reference:**

Ref: <http://blogs.technet.com/b/speschka/archive/2009/10/30/sharepoint-2010-content-organizer-part-1-a-cool-new-feature-for-managing-your-content.aspx>

### QUESTION 16

Your company has an intranet site that is hosted on Microsoft SharePoint Online. The site is currently available in English only.

You need to make sure that users can navigate the intranet site in English and in German.

What should you do?

- A. Modify the Regional settings of the intranet site.
- B. Activate the SharePoint Server Enterprise Site Collection Features.
- C. From the term store, modify the Working Languages.
- D. From the term store, change the default language.
- E. Modify the Language settings of the intranet site.
- F. Activate the SharePoint Server Publishing Infrastructure feature.

**Correct Answer:** B

**Explanation**

**Explanation/Reference:**

Ref: Microsoft Download: Microsoft SharePoint Online for Enterprises Service Description

### QUESTION 17

Your company has a Microsoft SharePoint Online environment.

The department field of each user profile contains the department of the user.

All users have Office 2010 installed on their client computer.

The marketing department has a Shared Documents library named MarkDocs.

You need to ensure that users in the marketing department can select the MarkDocs library from the Save to SharePoint command in Microsoft Word. Other users must not see the MarkDocs library as a default option from the Save to SharePoint command.

What should you do? (Each correct answer presents part of the solution. Choose all that apply.)

- A. From Publish links to Office client applications, create a link.
- B. Create a SharePoint group for the marketing department.
- C. From the Configure Personalization Site, create a link.



D. Create an Audience for the marketing department.

**Correct Answer:** AC

**Explanation**

**Explanation/Reference:**

Ref: <http://technet.microsoft.com/en-us/library/cc263102.aspx> <http://technet.microsoft.com/en-us/library/cc261958.aspx>

To add a link to Office client applications

1. Verify that you have the following administrative credentials:
  - To add a link to Office client applications, you must be a member of the Administrators group on the computer that is running the SharePoint Central Administration Web site.
2. On the home page of the SharePoint Central Administration Web site, in the **Application Management** section, click **Manage service applications**.
3. Click in the **Type** column of the User Profile Service application to select the row.
4. In the **Operations** group of the ribbon, click **Manage**
5. On the Manage Profile Service page, in the **My Site Settings** section, click **Publish Links to Office Client Applications**.
6. On the Published links to Office client applications page, click **New Link**.
7. On the Add Published Link page, in the **URL** box, type the URL of the location where users will be able to publish links.
8. In the **Description** box, type a brief name for this location.  
This is the name that will appear in the **Favorite Links** section of the **Save As** dialog box.
9. Select the type of the location that this link represents. For example, if the target location is a SharePoint document library, select **Document Library**.
10. In the **Target Audiences** box, either type the name of the user or group to add or using the address book to find a user or group to add.  
Separate multiple user names or group names with a semicolon (;). You may also type **All site users** to select all users. For more information about audiences, see [Audience and content targeting planning \(SharePoint Server 2010\)](#).

Delete a link to Office client applications

Use this procedure to delete a link to Office client applications. For example, you might want to delete a link to a SharePoint document repository when it is no longer needed.

To delete a link to Office client applications

1. Verify that you have the following administrative credentials:
  - To delete a link to Office client applications, you must be a User Profile Service administrator with Manage Personal Features permissions for the User Profile Service application that you are managing. For more information, see [User Profile Service administration \(SharePoint Server 2010\)](#).
2. On the home page of the SharePoint Central Administration Web site, in the **Application Management** section, click **Manage service applications**.
3. Click in the **Type** column of the User Profile Service application to select the row.
4. In the **Operations** group of the ribbon, click **Manage**
5. On the Manage Profile Service page, in the **My Site Settings** section, click **Publish Links to Office Client Applications**.
6. On the Published links to Office client applications page, select the check box to the left of the link that you want to delete, and then click **Delete Link**.

#### QUESTION 18

Your company has an intranet site that is hosted on Microsoft SharePoint Online. The company's development team gives you a file named Webparts.wsp that contains multiple Web Parts.

You need to ensure that users can use the Web Parts in their sites.

To which library should you upload the Webparts.wsp file?

- A. Site Assets
- B. Master Page Gallery
- C. Solution Gallery
- D. Web Part Gallery

**Correct Answer:** C

**Explanation**

**Explanation/Reference:**

Ref: <http://msdn.microsoft.com/en-us/library/gg454741.aspx> <http://silverlight.sys-con.com/node/1777795/mobile>

#### QUESTION 19

Your company has a public website that is hosted on Microsoft SharePoint Online. The website has the URL of <http://www.contoso.com>.

The marketing department plans to publish its wiki, shared documents, and blog. These resources must be available to anonymous users on the Internet.

You need to publish the marketing department resources. The solution must prevent users in the marketing department from modifying the content of [www.contoso.com](http://www.contoso.com).



What should you do first?

- A. From the settings of the public website, create a new site content type.
- B. From the settings of the public website, create a new site.
- C. From the SharePoint Online administration center, create another private site collection.
- D. From the SharePoint Online administration center, create another public website.

**Correct Answer: B**  
**Explanation**

**Explanation/Reference:**  
Ref: <http://office.microsoft.com/en-us/sharepoint-online-enterprise-help/create-and-edit-a-wiki- HA102019812.aspx>

**QUESTION 20**

You implement an intranet site by using Microsoft SharePoint Online.

The site uses the default Team Site template.

Users create 75 subsites. Many of the subsites did not inherit the permissions of the parent site.

You need to provide a user named Admin5 with the ability to administer all of the sites in the intranet site. The solution must use the minimum amount of administrative effort.

What should you do?

- A. From the site settings of the root site, assign Admin5 the Full Control permission to the root site.
- B. From the SharePoint Online administration center, add a User Profile Property named Administrator and set the property value to True for Admin5.
- C. From the site settings of the root site, add Admin5 to the Hierarchy Managers group.
- D. From the site settings of the root site, add Admin5 to the Site Collection Administrators group.

**Correct Answer: D**  
**Explanation**

**Explanation/Reference:**  
Ref: <http://support.microsoft.com/kb/2675761/en-us?sd=rss&spid=14571>

**QUESTION 21**

Your company has a site collection that is hosted on Microsoft SharePoint Online.

The site collection contains a document library named Legal.

You need to ensure that previous versions of documents stored in Legal are only retained for two years.

What should you modify?

- A. validation settings
- B. enterprise management and keywords settings
- C. information management policy settings
- D. versioning settings

**Correct Answer: C**  
**Explanation**

**Explanation/Reference:**  
Ref: <http://office.microsoft.com/en-us/sharepoint-online-enterprise-help/create-and-apply-information- management-policies-HA101631505.aspx>

**QUESTION 22**

This question is part of a series of questions that use the same set of answer choices. Each answer choice may be used once, more than once, or not at all.

Your organization owns and operates two separate companies named Tailspin Toys and Wingtip Toys. The company has one Office 365 subscription. All users at Wingtip Toys have an email address that uses the wingtip toys.com suffix. All users at Tailspin Toys have an email address that uses the tailspintoys.com suffix.

The business units have the following configurations:

The email infrastructure of Wingtip Toys is hosted entirely on Office 365. The email infrastructure of Tailspin Toys is a hybrid deployment of Office 365 that uses single sign-on.

The Tailspin Toys network contains three servers. The servers are configured as shown in the following table.

Server name	Server role
Server1	Microsoft Exchange Server 2010 Service Pack 1 (SP1)
Server2	Active Directory Federation Services (AD FS) 2.0
Server3	Directory synchronization

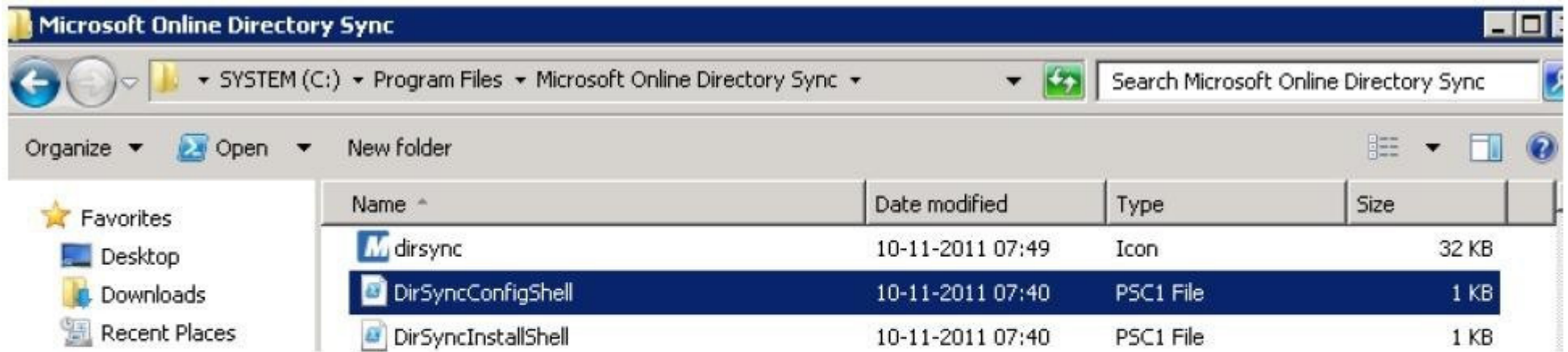
You delete a Tailspin Toys user. You need to ensure that the deleted user's name is removed from the global address list (GAL) as soon as possible. Which cmdlet should you use?

- A. Convert-MSOLDomainToStandard
- B. Add-Member
- C. Set-MSOLUserPassword
- D. Set-MSOLGroup
- E. Update-MSOLFederatedDomain
- F. Set-MSOLDomainFederationSettings

- G. Start-OnlineCoexistenceSynch
- H. New-MSOLLicenseOptions
- I. Set-MSOLDirSyncEnabled
- J. Start- Job
- K. Confirm-MSOLDomain
- L. Set-MSOLUser
- M. Set-MSOLUserPrincipalName
- N. Add-MSOLGroupMember
- O. Set-MSOLDomainAuthentication

**Correct Answer: G**  
**Explanation**

**Explanation/Reference:**  
 Ref: <http://seethruthethecloud.com/how-to-force-directory-synchronization-for-office-365>



**Type the command: Start-OnlineCoexistenceSync**



**QUESTION 23**

This question is part of a series of questions that use the same set of answer choices. Each answer choice may be used once, more than once, or not at all. Your organization owns and operates two separate companies named Tailspin Toys and Wingtip Toys.

The company has one Office 365 subscription.

All users at Wingtip Toys have an email address that uses the wingtip toys.com suffix. All users at Tailspin Toys have an email address that uses the tailspintoys.com suffix.

The business units have the following configurations:

The email infrastructure of Wingtip Toys is hosted entirely on Office 365. The email infrastructure of Tailspin Toys is a hybrid deployment of Office 365 that uses single sign-on.

The Tailspin Toys network contains three servers. The servers are configured as shown in the following table.

Server name	Server role
Server1	Microsoft Exchange Server 2010 Service Pack 1 (SP1)
Server2	Active Directory Federation Services (AD FS) 2.0
Server3	Directory synchronization

You need to ensure that the password for a Wingtip Toys user named Test5 never expires. Which cmdlet should you use?

- A. Start-OnlineCoexistenceSynch
- B. Convert-MSOLDomainToStandard
- C. New-MSOLUcenseOptions
- D. Set-MSOLUserPrincipalName
- E. Confirm-MSOLDomam
- F. Add-MSOLGroupMember
- G. Set-MSOLUserPassword
- H. Update-MSOLFederatedDomain
- I. Set-MSOLGroup
- J. Set-MSOLDomainAuthentication
- K. Add-Member
- L. Set-MSOLUser
- M. Set-MSOLDomainFederationSettings
- N. Start Job
- O. Set-MSOLDirSyncEnabled

**Correct Answer: L**  
**Explanation**

**Explanation/Reference:**  
 Ref: <http://wikiclouded.com/wp-content/uploads/2012/02/OFFICE-365-Powershell-Knowledge-V1.2.pdf>

**QUESTION 24**

This question is part of a series of questions that use the same set of answer choices. Each answer choice may be used once, more than once, or not at all.

Your company has two separate business units named A. Datum Corporation and Contoso, Ltd.

The company has one Office 365 subscription.

All users at Contoso have an email address that uses the contoso.com suffix. All users at A. Datum have an email address that uses the adatum.com suffix.

The business units have the following configurations:

· The email infrastructure of Contoso is hosted entirely on Office 365. · The email infrastructure of A. Datum is a hybrid deployment of Office 365 that uses single sign-on.

The A. Datum network contains three servers. The servers are configured as shown in the following table.

Server name	Server role
Server1	Microsoft Exchange Server 2010 Service Pack 1 (SP1)
Server2	Active Directory Federation Services (AD FS) 2.0
Server3	Directory synchronization

You install a new certificate on Server1 and Server2.

You need to ensure that the A. Datum users continue to use single sign-on.

Which cmdlet should you use?

- A. Start-OnlineCoexistenceSynch
- B. Set-MSOLDirSyncEnabled
- C. New-MSOLLicenseOptions
- D. Start-Job
- E. Convert-MSOLDomamToStandard
- F. Set-MSOLDomainAuthentication
- G. Set-MSOLUserPrincipalName
- H. Set-MSOLUserPassword
- I. Add-MSOLGroupMember
- J. Confirm-MSOLDomain
- K. Update-MSOLFederatedDomain
- L. Set MSOLGroup
- M. Set-MSOLDomainFederationSettings
- N. Add-Member
- O. Set-MSOLUser

**Correct Answer: K**

**Explanation**

**Explanation/Reference:**

Ref: <http://onlinehelp.microsoft.com/en-us/office365-enterprises/hh125002.aspx>

**Update-MsolFederatedDomain**

The Update-MsolFederatedDomain cmdlet changes settings in both the Active Directory Federation Services 2.0 server and Office 365. It is necessary to run this cmdlet whenever the URLs or certificate information within Active Directory Federation Services 2.0 change due to configuration changes or through regular maintenance of the certificates, such as when a certificate is about to expire. This cmdlet should also be run when changes occur in Office 365. To confirm that the information in the two systems is correct, the Get-MsolFederationProperty cmdlet can be used to retrieve the settings.

**QUESTION 25**

Your company has a hybrid deployment Office 365.

You create a user in Office 365.

The next day, you discover that the new user account fails to appear in the Microsoft Exchange Server on-premises global address list (GAL). You need to ensure that the user has a mailbox and appears in the Exchange on-premises GAL and the Office 365 GAL.

What should you do?

- A. Assign a Microsoft Exchange Online license to the user account.
- B. From the Microsoft Online Services Directory Synchronization tool, enable rich coexistence.
- C. From the Office 365 portal, modify the sign-in status of the user account.
- D. Delete the user account hosted on Office 365. From the Exchange Management Console, create a new remote mailbox.

**Correct Answer: D**

**Explanation**

**Explanation/Reference:**

Explanation:

<http://community.office365.com/en-us/forums/614/p/26641/130554.aspx>

**QUESTION 26**

Your company has a hybrid deployment of Office 365.

You discover that some Active Directory user accounts are unavailable in Office 365.

You need to identify why the user accounts are unavailable in Office 365.

What should you do?

- A. Run microsoft.online.msonlineconnector.exe.
- B. Run configwizard.exe.
- C. Run miisdient.exe.
- D. Verify the Dirsyncsetup.txt file.

**Correct Answer: A**  
**Explanation**

**Explanation/Reference:**

**QUESTION 27**

Your company has an Office 365 subscription.

The network contains an Active Directory domain.

You configure single sign-on for all users.

You need to verify that single sign-on functions for the users who access Office 365 from the Internet.

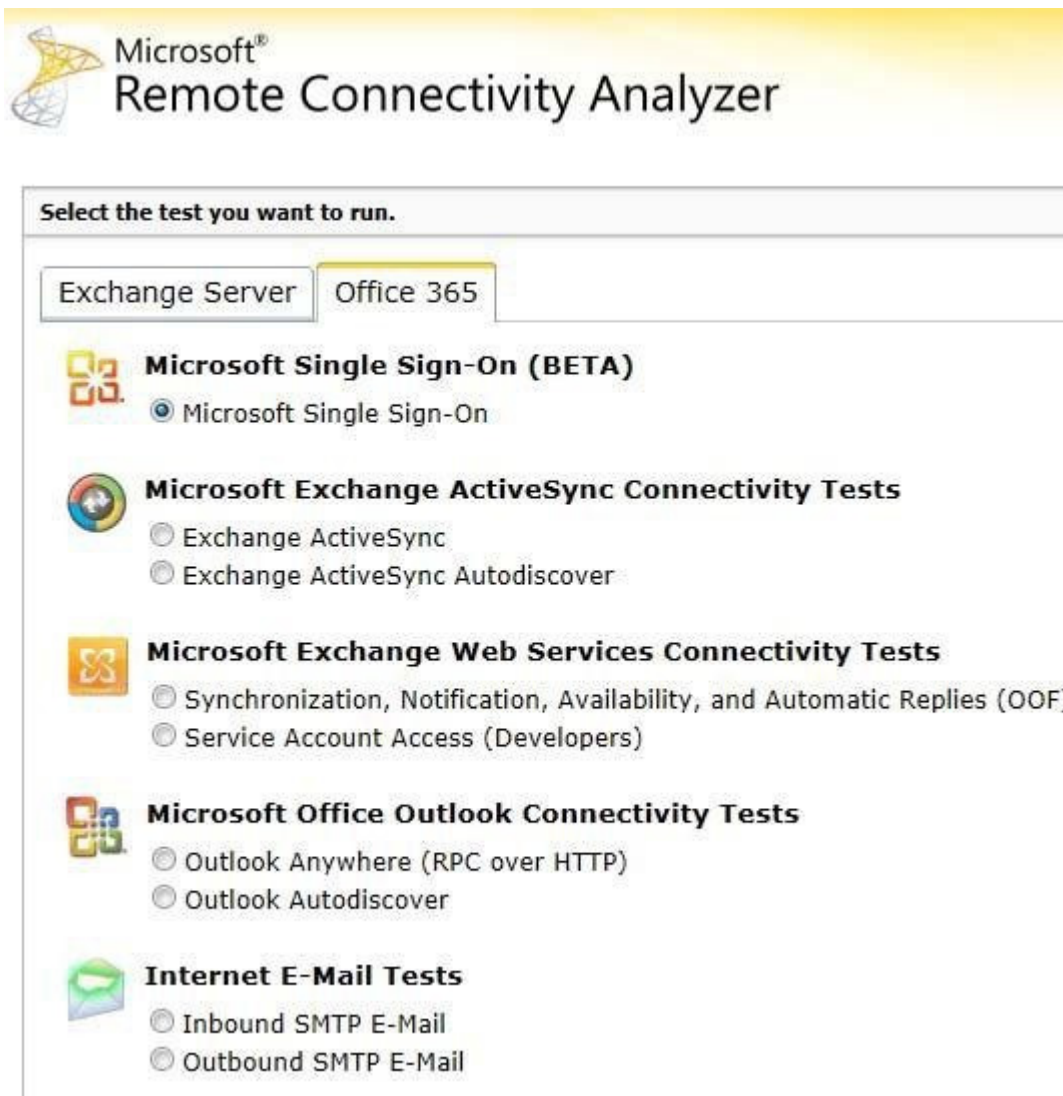
What should you run?

- A. the Get-MSOLFederationProperty cmdlet
- B. the Test-OrganizationRelationship cmdlet
- C. the Microsoft Remote Connectivity Analyzer
- D. the Microsoft Exchange Server Deployment Assistant

**Correct Answer: C**  
**Explanation**

**Explanation/Reference:**

Ref: <https://www.testexchangeconnectivity.com/> (Office 365 tab)



**QUESTION 28**

You are the administrator for a company named Contoso, Ltd.

The company has an Office 365 subscription.

Your need to prevent users from changing their user display name by using Outlook Web App.

What should you do?

- A. Run the Set-MsolCompanyContactInformation cmdlet.
- B. Modify the default email address policy.
- C. Run the Set-MsolUserPrincipalName cmdlet.
- D. Modify the default role assignment policy.

**Correct Answer: D**  
**Explanation**



**Explanation/Reference:**

Ref: <http://help.outlook.com/en-gb/140/ff852817.aspx>

**QUESTION 29**

Your company has a hybrid deployment of Office 365 that uses single sign-on. The company uses the contoso.com SMTP domain.

You have a server named ADFS\_Server5 that has the Active Directory Federation Services (AD FS) 2.0 server role installed.

A power failure occurs at the data center.

Power is restored at the data center.

You need to verify that AD FS functions on ADFS\_Server5.

What should you do?

- A. Run the Test-MapiConnectivity cmdlet.
- B. Connect to [https://ADFS\\_Server5.tailspintoys.com/adfs/ls/default.aspx](https://ADFS_Server5.tailspintoys.com/adfs/ls/default.aspx).
- C. Connect to [https://ADFS\\_Server5.contoso.com/adfs/fs/federationsservice.asmx](https://ADFS_Server5.contoso.com/adfs/fs/federationsservice.asmx).
- D. Run the Test-Connectivity cmdlet.

**Correct Answer: C**

**Explanation****Explanation/Reference:**

Explanation/Reference:

Ref: [http://technet.microsoft.com/en-us/library/dd807076\(v=ws.10\).aspx](http://technet.microsoft.com/en-us/library/dd807076(v=ws.10).aspx)

**Procedure 1: To verify that a federation server is operational**

1. To verify that Internet Information Services (IIS) is configured correctly on the federation server, log on to a client computer that is located in the same forest as the federation server.
2. Open a browser window, in the address bar type the federation server's DNS host name, and then append `/adfs/fs/federationsservice.asmx` to it for the new federation server, for example:

**<https://fs1.fabrikam.com/adfs/fs/federationsservice.asmx>**

**QUESTION 30**

Your company has a Microsoft Exchange Server 2010 Service Pack 1 (SP1) organization and a hybrid deployment of office 365. All mailboxes are hosted on Office 365. All user accounts are hosted on-premises.

You need to delete a user account and its associated mailbox.

Which tool should you use?

- A. the Exchange Control Panel
- B. the Set-Mailbox cmdlet
- C. the Remove-MailUser cmdlet
- D. Active Directory Users and Computers

**Correct Answer: D**

**Explanation****Explanation/Reference:**

Explanation:

Ref: <http://community.office365.com/en-us/forums/162/t/18808.aspx>

All you need to do is delete the user in AD then either wait for DirSync to run or force a DirSync via PowerShell.

Once O365 gets the update it will remove the user from Office 365 and free up the license. The OAB will take 24-48 hours to update because of the update cycle, but you should see the user gone from the GAL within minutes of running the DirSync.

**QUESTION 31**

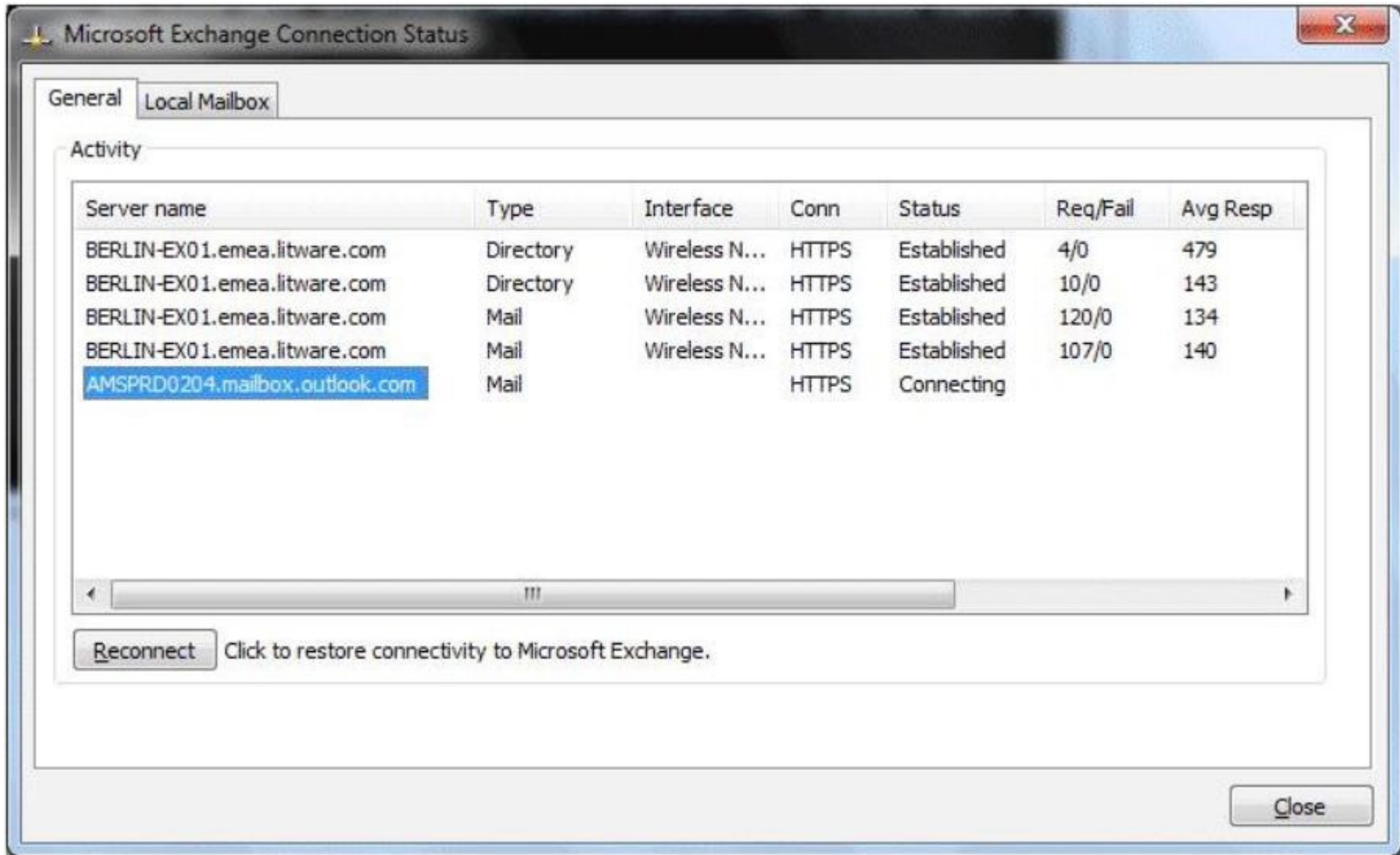
Your company has a hybrid deployment of Office 365.

Each user has a client computer that runs Windows 7 and has Office 2010 Service Pack 1 (SP1) installed.

You have a user named User1 who has a Microsoft Exchange Server 2010 on-premises mailbox.

You move the archive mailbox of User1 to Microsoft Exchange Online. After the move, User1 cannot access the archive mailbox from Outlook 2010. User1 can log on to the Office 365 portal by using Internet Explorer.

You verify the Microsoft Exchange Connection Status as shown in the exhibit. (Click the Exhibit button.)



You need to ensure that User1 can access the archive mailbox from Outlook 2010.

What should you do?

- A. Add outlook.com to the Trusted sites in Internet Explorer.
- B. Install the Microsoft Online Services Sign-in Assistant.
- C. Run the Microsoft Office 365 Desktop Setup.
- D. Modify the Internet Explorer proxy settings.

**Correct Answer: B**

**Explanation**

**Explanation/Reference:**

Ref: <http://www.microsoft.com/en-us/download/details.aspx?id=28177>

### QUESTION 32

Your company subscribes to an Office 365 Plan E3.

A user named User1 installs Office Professional Plus for Office 365 on a client computer.

From the Microsoft Online Services portal, you assign User1 an Office Professional Plus license.

One month after installing Office, User1 can no longer save and edit Office documents on the client computer. User1 can open and view Office documents.

You need to ensure that User1 can save and edit documents on the client computer by using office. What should you do?

- A. Install the Office Customization Tool.
- B. Reinstall Office Professional Plus.
- C. Install the Microsoft Online Services Sign-in Assistant.
- D. Upgrade the subscription to Plan E4.

**Correct Answer: C**

**Explanation**

**Explanation/Reference:**

Ref: <http://technet.microsoft.com/en-us/library/gg982959.aspx>

## Overview

The Microsoft Online Services Sign-In Assistant provides end user sign-in capabilities to Microsoft Online Services, such as Office 365. The MOS SIA installs client components that allow common applications, such as Microsoft Outlook and Lync, to authenticate to Microsoft Online Services. The MOS SIA can also provide an improved sign-in experience, such that end users can access Microsoft Online Services without having to re-enter their credentials (such as a user name or password). This download is intended for IT Professionals, for distribution to managed client systems as part of an Office 365 client deployment, via System Center Configuration Manager (SCCM) or similar software distribution systems. For users who are installing Office 365 by means of the Office 365 Desktop Setup application, this download is not necessary, because the MOS SIA is installed as part of the Desktop Setup process.

### QUESTION 33

Your company has a hybrid deployment of Office 365.

You need to identify which certificate is used for token signing between the on-premises environment and Office 365.

Which tool should you use?

- A. the Exchange Management Console
- B. the AD FS 2.0 Management console
- C. the Active Directory Domains and Trusts snap-in
- D. the Office 365 portal
- E. the Certificates snap-in

**Correct Answer: B**  
**Explanation**

**Explanation/Reference:**  
 Ref: [http://technet.microsoft.com/en-us/library/gg557729\(v=ws.10\).aspx](http://technet.microsoft.com/en-us/library/gg557729(v=ws.10).aspx)

Applies To: Active Directory Federation Services (AD FS) 2.0, Windows Server 2012

The AD FS 2.0 console installs automatically when you install AD FS 2.0. You can use the console to configure services and policies that are related to a deployment of a federation server. This tool is a single snap-in that is compatible with Microsoft Management Console (MMC) 3.0.

You can use the AD FS 2.0 snap-in to perform the following tasks:

- Configure the Federation Service by using the options in the **Service** node in the AD FS 2.0 console tree:
  - Configure the certificates that AD FS 2.0 uses for issuing and receiving tokens and publishing metadata.
  - Configure the types of claims that are supported by AD FS 2.0.
- Manage the trust relationships of the Federation Service by using the **Trust Relationships** node in the AD FS 2.0 console tree:
  - Add and configure policies for claims providers, relying parties, and attribute stores.
  - Add and modify claim rules for claims providers and relying party trusts.

**QUESTION 34**

Your company has a hybrid deployment of Office 365.

You need to set the authentication method of the federation servers to forms-based authentication.

What should you do?

- A. Modify the Web.config file in the %systemroot%\inetpub\adfs\ls directory.
- B. Modify the Global.asax file in the %systemroot%\inetpub\adfs\ls directory.
- C. From the AD FS 2.0 Management console, add a relaying party trust.
- D. From the AD FS 2.0 Management console, add a claims provider trust.

**Correct Answer: A**  
**Explanation**

**Explanation/Reference:**  
 Ref: <https://blogs.ncl.ac.uk/isg/?p=296>  
<http://support.microsoft.com/kb/2461628>

**QUESTION 35**

This question is part of a series of questions that use the same set of answer choices. Each answer choice may be used once, more than once, or not at all.

Your company uses Office 365.

You need to identify all of the users who can export mailboxes.

Which Windows PowerShell cmdlet should you use?

- A. Get-MSOLUser
- B. Get-Mailbox
- C. Get-Recipient
- D. Get-RemovedMailbox
- E. Get-RoleGroupMember
- F. Get-MailContact
- G. Get-ManagementRoleAssignment
- H. Get-LogonStatistics
- I. Get-User
- J. Get-MailboxStatistics
- K. Get-MSOLContact
- L. Get-Group

**Correct Answer: G**  
**Explanation**

**Explanation/Reference:**  
 Ref: <http://technet.microsoft.com/en-us/library/dd351024>

**QUESTION 36**

This question is part of a series of questions that use the same set of answer choices. Each answer choice may be used once, more than once, or not at all.

Your company uses Office 365.

You need to obtain a list of all the users who have NOT accessed their mailbox during the past 90 days.

Which Windows PowerShell cmdlet should you use?

- A. Get-Mailbox
- B. Get-LogonStatistics
- C. Get-Recipient
- D. Get-MSOLUser
- E. Get-Group
- F. Get-ManagementRoleAssignment
- G. Get-User
- H. Get-MailboxStatistics
- I. Get-RemovedMailbox
- J. Get-MailContact
- K. Get-MSOLContact
- L. Get-RoleGroupMember

**Correct Answer: H**  
**Explanation**

**Explanation/Reference:**  
 Ref: <http://technet.microsoft.com/en-us/library/bb124612>

**QUESTION 37**

This question is part of a series of questions that use the same set of answer choices. Each answer choice may be used once, more than once, or not at all.

Your company has an Office 365 subscription. All user mailboxes are hosted on Microsoft Exchange Online. Corporate security policy states that all administrative users must be assigned the minimum number of permissions. You need to ensure that an administrator named Admin1 can create custom administrator roles for several regional help desk users. The custom roles will be used to manage Exchange Online. To which role or role group should you add Admin1?

- A. User management administrator
- B. Recipient Management
- C. Service administrator
- D. View-Only Organization Management
- E. Records Management
- F. Billing administrator
- G. UM Management
- H. Discovery Management
- I. Global administrator
- J. Help Desk
- K. Password administrator
- L. Organization Management

**Correct Answer: I**  
**Explanation**

**Explanation/Reference:**  
 Explanation/Reference:  
 Ref: <http://onlinehelp.microsoft.com/en-us/office365-enterprises/ff637584.aspx>

**QUESTION 38**

This question is part of a series of questions that use the same set of answer choices. Each answer choice may be used once, more than once, or not at all. Your company has an Office 365 subscription.

All user mailboxes are hosted on Microsoft Exchange Online. Corporate security policy states that all administrative users must be assigned the minimum number of permissions.

You need to ensure that an administrator named Admin5 can configure federation for Microsoft Lync Online.

To which role or role group should you add Admin5?

- A. Global administrator
- B. Billing administrator
- C. User management administrator
- D. View-Only Organization Management
- E. Organization Management
- F. Help Desk
- G. Service administrator
- H. Password administrator
- I. Discovery Management
- J. UM Management
- K. Records Management
- L. Recipient Management

**Correct Answer: A**  
**Explanation**

**Explanation/Reference:**  
 Ref: <http://blogs.technet.com/b/lystavlenn/archive/2012/04/10/administrator-roles-in-office-365.aspx>

**QUESTION 39**

You are implementing a hybrid deployment of Office 365. You discover that users who have migrated to Office 365 cannot view the free/busy information of users who are hosted on the Microsoft Exchange Server on-premises environment. The Exchange on-premises users can view the free/busy information of all users. You need to ensure that the users who have Office 365 mailboxes can view the free/busy information of users who have Exchange on premises mailboxes.



Which node should you modify from the Exchange Management Console?

- A. Microsoft Exchange On-Premises - Organization Configuration
- B. Microsoft Exchange On-Premises - Server Configuration
- C. Microsoft Exchange On-Premises - Recipient Configuration
- D. Office 365 - Organization Configuration
- E. Office 365 - Recipient Configuration

**Correct Answer: A**  
**Explanation**

**Explanation/Reference:**

Reference:

<http://support.microsoft.com/kb/2555008>

<http://support.microsoft.com/kb/2667844>

## Resolution

To resolve this issue, edit the organization relationship in the on-premises environment to include the SMTP domain of the user who is experiencing the issue. To do this, use one of the following methods.

### Method 1: Use Exchange Management Console

1. On the on-premises Exchange server, open Exchange Management Console, and then click **Organization Configuration** under **Microsoft Exchange On-Premises**.
2. Click the **Organization Relationships** tab, and then view the properties of the organization relationship.
3. Click the **External Organization** tab, type the federated domain name in the **Federated domains of the external Exchange organization** box, and then click **Add**.
4. Repeat step 3 for each domain that you want to add.
5. Click **OK**.

### Method 2: Use the Exchange Management Shell

1. On the on-premises server, open the Exchange Management Shell.
2. Configure the organization relationship as a variable. For example, run the following cmdlet:

```
$OrgRel = Get-OrganizationRelationship Contoso
```

3. Add the additional domain names that you want to the variable. For example, run the following cmdlet:

```
$OrgRel.DomainNames += "contoso.com"
```

4. Update the organization relationship by using the new domain names value. For example, run the following cmdlet:

```
Set-OrganizationRelationship $OrgRel.Name -DomainName $OrgRel.DomainNames
```

Topic 2, Volume B

#### QUESTION 40

Your company uses Office 365 for all users.  
The company has the contoso.com SIP domain.

You need to change the SIP address of a user named User1 from user1@contoso.com to user2@contoso.com. You must achieve this goal in the minimum amount of time.

What should you do?

- A. Modify the PrimarySmtpAddress attribute of User1.
- B. Add a proxy address to the properties of User1.
- C. Create a service request.
- D. Modify the sign-in status of User1.

**Correct Answer: C**  
**Explanation**

**Explanation/Reference:**

#### QUESTION 41

Your organization owns and operates two separate companies named Tailspin Toys and Wingtip Toys.

The company has one Office 365 subscription.

All users at Wingtip Toys have an email address that uses the wingtip toys.com suffix. All users at Tailspin Toys have an email address that uses the tailspintoys.com suffix.

The business units have the following configurations:

The email infrastructure of Wingtip Toys is hosted entirely on Office 365.

The email infrastructure of Tailspin Toys is a hybrid deployment of Office 365.

365 that uses single sign-on.

The Tailspin Toys network contains three servers. The servers are configured as shown in the following table.

Server name	Server role
ExServer1	Microsoft Exchange Server 2010 Service Pack 1 (SP1)
ADFSServer1	Active Directory Federation Services (AD FS) 2.0
DirSyncServer1	Directory synchronization

You delete an Tailspin Toys user.

You need to ensure that the deleted user's name is removed from the global address list (GAL) as soon as possible.

Which cmdlet should you use?

- A. Add-MSOLGroupMember
- B. Update-MSOLFederatedDomain
- C. Set-MSOLDomainFederationSettings
- D. Set-MSOLUserPassword
- E. Set-MSOLDirSyncEnabled
- F. Start-Job
- G. Add-Member
- H. Convert-MSOLDomainToStandard
- I. Start-OnlineCoexistenceSynch
- J. Set-MSOLDomainAuthentication
- K. New-MSOLLicenseOptions
- L. Set-MSOLGroup
- M. Confirm-MSOLDomain
- N. Set-MSOLUserPrincipalName
- O. Set-MSOLUser

**Correct Answer: G**

**Explanation**

**Explanation/Reference:**

#### QUESTION 42

Your company has an Office 365 subscription.

A user named Test5 has a mailbox.

You need to ensure that all of the email messages sent and received by Test5 are accessible to members of the audit department for 60 days, even if Test5 permanently deletes the messages.

What should you do?

- A. Run the Set-User cmdlet.
- B. Run the Set-Mailbox cmdlet.
- C. Run the Set-RetentionPolicyTag cmdlet.
- D. Run the Set-MailboxDatabase cmdlet.
- E. Run the Set-RetentionPolicy cmdlet.

**Correct Answer: B**

**Explanation**

**Explanation/Reference:**

#### QUESTION 43

You are the administrator for a company named Contoso, Ltd.

The company has a subscription to Office 365 for midsize business and enterprises. The company uses Microsoft Lync Online.

The company uses the contoso.com SIP domain.

Users frequently work from home.

The company does not support VPN connections to the internal network.

You need to ensure that users who work from home can discover the Lync Online service when they sign-in to the Lync Online clients.

Which DNS records should you create in the external DNS zone of contoso.com?

- A. a service location (SRV) record for \_sip.\_tls.contoso.com that points to port 443 on sipdir.online.lync.com
- B. a canonical name (CNAME) record for \_sip.\_tls.contoso.com that points to contoso.lync.com
- C. a record for im.contoso.com that points to the IP address of a Lync Online server
- D. a service location (SRV) record for \_sip.\_tcp.contoso.com that points to port S060 on sipdir.online.lync.com

**Correct Answer: B**

**Explanation**

**Explanation/Reference:**

#### QUESTION 44

Your company deploys Microsoft Lync Server 2010.

Users have external access to the Lync on-premises environment. All of the users use contoso.com as their SIP domain.

You implement Microsoft Lync Online by using the contoso.onmicrosoft.com domain name.

You add a user named User to Lync Online.

User1 cannot view the presence information of Lync on-premises users. Lync on-premises users cannot view the presence information of User1. User1 can view the presence information of Office 365 users from other companies.

You need to ensure that all of the users can view each other's presence information.

What should you do?

- A. Add a service location (SRV) record for contoso.onmicrosoft.com to an internal DNS zone.
- B. Change the SIP address of all of the users to use the contoso.onmicrosoft.com domain name.
- C. Run the New-CsAllowedDomain cmdlet.
- D. Run the New-CsHostingProvider cmdlet.

**Correct Answer: D**

**Explanation**

**Explanation/Reference:**

#### QUESTION 45

You deploy Office 365.

All the members of a team named Sales have full access to a shared mailbox named Sales. You enable auditing for all shared mailboxes.

From the Sales mailbox, an email message that contains inappropriate content is sent. You need to identify which user sent the message.

What should you do?

- A. From the Exchange Control Panel, run an administrator role group report.
- B. From Windows PowerShell, run the Get-SharingPolicy cmdlet.
- C. From Windows PowerShell, run the Write-AdminAuditLog cmdlet.
- D. From Windows PowerShell, run the New-MailboxAuditLogSearch cmdlet.

**Correct Answer: D**

**Explanation**

**Explanation/Reference:**

Explanation/Reference:

Ref:<http://social.technet.microsoft.com/Forums/zh/exchange2010/thread/75088516-28f5-45f8-b64b-9ef7cfea1316>

You can use the Exchange 2010 auditing features.

Then run the cmdlet Search-MailboxAuditLog Identity XXX LogonTypes Delegate ShowDetails.

#### QUESTION 46

Your company deploys Microsoft Lync Online.

You deploy the Microsoft Lync 2010 client to all client computers.

All users log on to the local domain.

You need to prevent users from modifying the Advanced Connection Settings on the Lync 2010 client.

What should you do?

- A. Deploy a Group Policy object (GPO) that uses the Communicator.adm administrative template.
- B. Deploy a Group Policy object (GPO) that removes all of the members of the local Administrators group.
- C. From the Lync Server Management Shell, run the Set-CsClientPolicy cmdlet.
- D. From the Lync Server Management Shell, run the Set-CsUserServicesConfiguration cmdlet.

**Correct Answer: C**

**Explanation**

**Explanation/Reference:**

Explanation/Reference:

General Information

Rejoice Lync Administrators! Gone are the days of out-of-band provisioning (Group Policy) and utilizing inband- provisioning (connecting to the server and getting custom settings). This is great news as many companies have machines that are either domain-joined and/or are outside of the network. Deploying Group Policies are not viable for non-domain joined machines and are possible to mobile workers if you are using Direct Access. But, with Lync 2010, you won't have to worry about either. Because Group Policies for Lync 2010 Client Settings have now been moved to in-band provisioning. Lync 2010 uses the Lync Management Shell (LMS) to manage these in-band settings utilizing commands with the following noun: CSCClientPolicy\*.

Commands with this noun include:

New-CSCClientPolicy

Get-CSCClientPolicy

Set-CSCClientPolicy

Grant-CSCClientPolicy

Remove-CSCClientPolicy

New-CSCClientPolicyEntry

<http://www.shudnow.net/2010/10/28/lync-2010-client-policies/>

#### QUESTION 47

You recently migrated all of the mailboxes in a Microsoft Exchange Server 2010 organization to Office 365. Each mailbox contains a department attribute.

You need to ensure that a user named User1 can search multiple mailboxes from the legal department only. What should you do?

- A. Add User1 to the Discovery Management role group.
- B. Run the Set-ManagementRoleAssignment cmdlet and specify the -customconfigwritescopes parameter.
- C. Run the New-ManagementScope cmdlet and specify the -recipientrestrictionfilter parameter.
- D. Add User1 to the Service administrator role group.

**Correct Answer: C**  
**Explanation**

**Explanation/Reference:**  
Explanation/Reference:  
<http://technet.microsoft.com/en-us/library/dd335137.aspx>

**QUESTION 48**

Your company has an Office 365 subscription.

You need to ensure that all email messages sent by users in the company contain a disclaimer.

What should you do?

- A. From the Exchange Control Panel, modify the default role assignment policy.
- B. From the Exchange Control Panel, run the New Rule wizard.
- C. From the Exchange Control Panel, add a MailTip.
- D. Run the Enable-InboxRule cmdlet.

**Correct Answer: C**  
**Explanation**

**Explanation/Reference:**

**QUESTION 49**

Your company has an Exchange Server 2010 Service Pack (SP1) organization and a hybrid deployment of Office 365.

You have two federation servers named Server1 and Server2.

You manage Server1 and Server2 by using a user account that is a member of the Domain Admins group.

You need to set the authentication method of the federation servers to forms-based authentication.

What should you do?

- A. Modify the Web.config file in the %systemroot%\inetpub\adfs\ls directory.
- B. Modify the Global.asax file in the %systemroot%\inetpub\adfs\ls directory.
- C. From the AD FS 2.0 Management console, add a claims provider trust.
- D. From the AD FS 2.0 Management console, add a relaying party trust.

**Correct Answer: A**  
**Explanation**

**Explanation/Reference:**  
Explanation/Reference:  
Ref: <https://blogs.ncl.ac.uk/isg/?p=296> <http://support.microsoft.com/kb/2461628>

**QUESTION 50**

Your company has an Office 365 subscription.

The network contains an Active Directory domain.  
You configure single sign-on for all users.

Corporate security policy states that all account passwords used by Windows services must be changed every 90 days.

An administrator changes all of the account passwords used by Windows services. You need to ensure that single sign-on continues to function.

What should you do?

- A. From Windows PowerShell, run the Update-MSOLFederatedDomain cmdlet.
- B. From Internet Information Services (IIS) Manager, modify the properties of the ADFS virtual directory.
- C. From the Services console, modify the properties of the AD FS 2.0 Windows Service.
- D. From Windows PowerShell, run the Set-MSOLADFSContext cmdlet.

**Correct Answer: C**  
**Explanation**

**Explanation/Reference:**

**QUESTION 51**

You subscribe to Office 365.

You plan to implement single sign-on.

You need to deploy Active Directory Federation Services (AD FS) to a server for the planned implementation.

Which deployment methods should you use? (Each correct answer presents a complete solution.  
Choose all that apply.)

- A. On a server that runs Windows Server 2008 R2, download and install AD FS 2.0.
- B. On a server that runs Windows Server 2008, download and install AD FS 2.0.



- C. On a server that runs Windows Server 2008, install the AD FS server role.
- D. On a server that runs Windows Server 2008 R2, install the AD FS server role.

**Correct Answer:** AB  
**Explanation**

**Explanation/Reference:**  
 Explanation/Reference:

<http://samirvaidya.blogspot.dk/2011/10/adfs-v-20-and-windows-server-2008-r2.html>

## ADFS v. 2.0 and Windows Server 2008 R2

If you need to configure ADFS v. 2.0 for use in Claims-based authentication scenarios, interestingly enough, ADFS v. 2.0 **DOES NOT** come pre-installed with Windows Server 2008 R2--even after the release of SP1.

Therefore, you will not be able to install ADFS as part of the Server Roles that come with Server Manager. Instead, you will have to separately download the release of ADFS v. 2.0 and install and configure it separately.

You can download the release of ADFS v. 2.0 from here: <http://www.microsoft.com/download/en/details.aspx?id=10909>

There is also an update rollup for ADFS v. 2.0 available which can be downloaded from here: <http://support.microsoft.com/kb/2607496>

In addition, this is an excellent article on configuring ADFS v. 2.0 : <http://www.sysadminsblog.com/microsoft/installing-and-configuring-adfs-2-0/>

### QUESTION 52

Your company has a hybrid deployment of Office 365.

You discover that some Active Directory user accounts are unavailable in Office 365. You need to identify why the user accounts are unavailable in Office 365.

What should you do?

- A. Verify the miissetup.log file.
- B. Run the Microsoft Remote Connectivity Analyzer.
- C. Run the Test-OutlookWebServices cmdlet.
- D. Run miisclient.exe.

**Correct Answer:** D  
**Explanation**

**Explanation/Reference:**  
 Explanation/Reference:  
<http://blogs.technet.com/b/educloud/archive/2012/08/10/user-soft-delete-and-dirsync-filtering-enabled.aspx>

To enable Dirsync filtering:

- 1) On the Dirsync Server, Run MIISCLIENT.exe from \Program Files\Microsoft Online Directory Sync\SYNCBUS\Synchronization Service\UIShell for 64-bit

Name	Profile Name	Status	Start Time	End Time
SourceAD	Export	success	8/10/2012 1:23:07 PM	8/10/2012 1:23:07 PM
TargetWebService	Export	success	8/10/2012 1:23:05 PM	8/10/2012 1:23:07 PM
TargetWebService	Delta Confirming Imp...	success	8/10/2012 1:23:02 PM	8/10/2012 1:23:05 PM
SourceAD	Delta Import Delta S...	success	8/10/2012 1:23:02 PM	8/10/2012 1:23:02 PM
SourceAD	Export	success	8/10/2012 10:22:07 AM	8/10/2012 10:22:07 AM
TargetWebService	Export	success	8/10/2012 10:22:05 AM	8/10/2012 10:22:07 AM
TargetWebService	Delta Confirming Imp...	success	8/10/2012 10:22:02 AM	8/10/2012 10:22:05 AM
SourceAD	Delta Import Delta S...	success	8/10/2012 10:22:02 AM	8/10/2012 10:22:02 AM
SourceAD	Export	success	8/10/2012 7:21:07 AM	8/10/2012 7:21:07 AM
TargetWebService	Export	success	8/10/2012 7:21:05 AM	8/10/2012 7:21:07 AM
TargetWebService	Delta Confirming Imp...	success	8/10/2012 7:21:03 AM	8/10/2012 7:21:05 AM
SourceAD	Delta Import Delta S...	success	8/10/2012 7:21:02 AM	8/10/2012 7:21:03 AM
SourceAD	Export	success	8/10/2012 4:20:07 AM	8/10/2012 4:20:07 AM
TargetWebService	Export	success	8/10/2012 4:20:05 AM	8/10/2012 4:20:07 AM
TargetWebService	Delta Confirming Imp...	success	8/10/2012 4:20:03 AM	8/10/2012 4:20:05 AM
SourceAD	Delta Import Delta S...	success	8/10/2012 4:20:02 AM	8/10/2012 4:20:03 AM
SourceAD	Export	success	8/10/2012 1:19:07 AM	8/10/2012 1:19:07 AM
TargetWebService	Export	success	8/10/2012 1:19:05 AM	8/10/2012 1:19:07 AM

### QUESTION 53

Your company has a hybrid deployment of Office 365 that uses single sign-on. The network contains a server named Server1 that has the Active Directory Federation Services (AD FS) 2.0 server role installed and a server named TMG1 that has Microsoft Forefront Threat Management Gateway (TMG) installed.

All access from the Internet to the internal network passes through TMG1. You deploy a second AD FS server named Server2 and configure Network Load Balancing (NLB).

You shut down Server1 for routine maintenance.

Users on the Internet report that they cannot log on to Office 365 by using their Active Directory credentials. Users on the internal network report that they can log on to Office 365 by using their Active Directory credentials.

You need to ensure that all of the users can log on to Office 365 if Server1 is unavailable. What should you do?

- A. Add a service location (SRV) record to the internal DNS zone.
- B. Add a service location (SRV) record to the external DNS zone.
- C. Modify the publishing rule on TMG1.
- D. Modify the cluster configuration on Server2.

**Correct Answer: C**

**Explanation**

**Explanation/Reference:**

#### **QUESTION 54**

Your company has a hybrid deployment of Office 365.

All mailboxes are hosted on Office 365.

All users access their Office 365 mailbox by using a user account that is hosted on-premises. You need to delete a user account and its associated mailbox.

Which tool should you use?

- A. The Remove-MSOLUser cmdlet
- B. The Remove-Mailbox cmdlet
- C. The Office 365 portal
- D. Active Directory Users and Computers

**Correct Answer: D**

**Explanation**

**Explanation/Reference:**

#### **QUESTION 55**

Your company uses Office 365.

You need to retrieve a list of all the mail-enabled objects in Office 365.

Which Windows PowerShell cmdlet should you use?

- A. Get-MSOLUser
- B. Get-MSOLContact
- C. Get-RoleGroupMember
- D. Get-Group
- E. Get-Recipient
- F. Get-LogonStatistics
- G. Get-MailContact
- H. Get-RemovedMailbox
- I. Get-Mailbox
- J. Get-ManagementRoleAssignment
- K. Get-MailboxStatistics
- L. Get-User

**Correct Answer: E**

**Explanation**

**Explanation/Reference:**

#### **QUESTION 56**

Your company uses Office 365.

You need to identify which users do NOT have a Microsoft Exchange Online license assigned to their user account.

Which Windows PowerShell cmdlet should you use?

- A. Get-ManagementRoleAssignment
- B. Get-User
- C. Get-RoleGroupMember
- D. Get-LogonStatistics
- E. Get-RemovedMailbox
- F. Get-MSOLContact
- G. Get-Recipient
- H. Get-Mailbox
- I. Get-Group
- J. Get-MailboxStatistics
- K. Get-MSOLUser
- L. Get-MailContact

**Correct Answer: K**

**Explanation**

**Explanation/Reference:**

Explanation:

Open PowerShell, connect to Office 365 (*Connect-MsolService*), and test the following cmdlets:

```
Get-MsolUser
```

“The Get-MsolUser cmdlet can be used to retrieve an individual user, or list of users. An individual user will be retrieved if the ObjectId or UserPrincipalName parameter is used.”



So, we've got a list of all users right now. Let's try to export it to a CSV file that we can then open with Excel

```
Get-MsolUser | Export-Csv c:\allUsers.csv
```

**QUESTION 57**

You deploy a Microsoft SharePoint Online environment.

Your company creates products that are classified in categories and subcategories.

You create a document library named Products that contains information about the products.

For each document that is uploaded to the Products library, users must be able to select the product's category, and then select a subcategory in that category. Users must be able to select more than one category and subcategory per product.

You need to recommend a solution for the Products library. The solution must minimize the use of custom code. What should you include in the recommendation?

- A. term sets
- B. site hierarchies
- C. lookup columns
- D. list templates

**Correct Answer: A**

**Explanation**

**Explanation/Reference:**

**QUESTION 58**

You implement an intranet site by using Microsoft SharePoint Online.

The site uses the default Team Site template.

Users create 100 document libraries. Many of the document libraries did not inherit the permissions of the site.

You need to provide a user named User with the ability to administer all of the document libraries in the intranet site. The solution must use the minimum amount of administrative effort.

What should you do?

- A. From the site settings of the root site, add User to the Hierarchy Managers group.
- B. From the SharePoint Online administration center, add User to the Site Collection Administrators group.
- C. From the SharePoint Online administration center, add a User Profile Property named Administrator and set the property value to True for User.
- D. Assign User the Full Control permission to each site.

**Correct Answer: A**

**Explanation**

**Explanation/Reference:**

Explanation:



In addition to the three core default SharePoint groups, a site owner can create new groups, modify the permission level of any of the groups, or use any combination of the following groups to create more precise access levels for their site:

- **Approvers** Members of this group have permission to publish a major version of a list item (such as a page) from draft to final version and allow it to be accessible to anonymous and restricted users.
- **Designers** This group has access permissions similar to those of site owners. Designers can change the performance, alter the look and feel of the site, and add code to the master page gallery. Designer level access is generally restricted to a small set of Web developers, Web designers, or both.
- **Hierarchy manager** Members of this group have permission to rename sites or move sites within a site collection to change the hierarchy of the site collection. This hierarchy affects the navigation structure of the site, and any pages in the site that use the site navigation will reflect the changes. This group is intended to replace the Channel Manager group in Microsoft Content Management Server (CMS) 2000. If you upgrade from CMS 2000, channel managers are migrated to hierarchy managers.
- **Quick Deploy Users** This group is intended to facilitate quick content updates for sites that have separate authoring and deployment tiers. It enables group members to easily schedule and propagate data from an authoring tier to a production tier.
- **Restricted readers** Members of this group access the site and all of its contents with read-only permissions on the major versions of each list or item. Typically this level of access is given to people who only need to view and read information on a site but never directly contribute to it.

#### QUESTION 59

Your company uses Microsoft SharePoint Online.

The company has a site collection for the marketing department.

You are a site collection administrator for the site collection.

You need to receive an email notification when the marketing site consumes more than 5 GB of storage space.

What should you do?

- A. From the SharePoint Online administration center, modify the resource usage quota for the marketing site collection.
- B. From the site settings of the marketing site collection, create a new site content type.
- C. From the SharePoint Online administration center, modify the storage quota for the marketing site collection.
- D. From the site settings of the marketing site collection, create a new site policy.

**Correct Answer: C**

**Explanation**

**Explanation/Reference:**

#### QUESTION 60

You deploy Microsoft SharePoint Online. The deployment contains one site. The site contains the following configurations:

- Custom site columns
- Custom site content types
- A custom document library
- Custom permissions assigned to the documents in the document library

You save a site as a template and you include the site content in the template.

You create a new site by using the site template.

You need to ensure that the new site has the same custom configurations as the original site.

What should you configure in the new site?

- A. the site content types
- B. the permissions assigned to the documents
- C. the site columns
- D. the document library settings

**Correct Answer: B**

**Explanation**

**Explanation/Reference:**

#### QUESTION 61

Your company uses Microsoft SharePoint Online.

You deploy the Microsoft Online Services Directory Synchronization tool. Users report that when they go to their personal site, the organization chart fails to display the company hierarchy.

You need to ensure that the organization chart displays the company hierarchy. Which attribute should you modify in Active Directory?

- A. ManagedBy
- B. Manager
- C. MemberOf
- D. Department

**Correct Answer: B**

**Explanation**



To Read the [Whole Q&As](#), please purchase the [Complete Version](#) from [Our website](#).

# Trying our product !

- ★ **100%** Guaranteed Success
- ★ **100%** Money Back Guarantee
- ★ **365 Days** Free Update
- ★ **Instant Download** After Purchase
- ★ **24x7** Customer Support
- ★ Average **99.9%** Success Rate
- ★ More than **69,000** Satisfied Customers Worldwide
- ★ Multi-Platform capabilities - **Windows, Mac, Android, iPhone, iPod, iPad, Kindle**

## Need Help

Please provide as much detail as possible so we can best assist you.

To update a previously submitted ticket:



 <b>One Year Free Update</b> <p>Free update is available within One Year after your purchase. After One Year, you will get 50% discounts for updating. And we are proud to boast a 24/7 efficient Customer Support system via Email.</p>	 <b>Money Back Guarantee</b> <p>To ensure that you are spending on quality products, we provide 100% money back guarantee for 30 days from the date of purchase.</p>	 <b>Security &amp; Privacy</b> <p>We respect customer privacy. We use McAfee's security service to provide you with utmost security for your personal information &amp; peace of mind.</p>
---	---	--

[Guarantee & Policy](#) | [Privacy & Policy](#) | [Terms & Conditions](#)

Any charges made through this site will appear as Global Simulators Limited.

All trademarks are the property of their respective owners.

Copyright © 2004-2015, All Rights Reserved.