

**100%** Money Back  
**Guarantee**

**Vendor:** Cisco

**Exam Code:** 644-066

**Exam Name:** Routing and Switching Solutions for System Engineers

**Version:** Demo

**QUESTION: 1**

During which phase is a proposal developed and delivered?

- A. Prepare
- B. Plan
- C. Design
- D. Operate

**Answer: A**

**QUESTION: 2**

Which of these correctly identifies the six phases of the Cisco Lifecycle Services framework?

- A. Prepare, Plan, Create, Implement, Operate, and Improve
- B. Prepare, Plan, Design, Implement, Operate, and Optimize
- C. Prepare, Plan, Design, Apply, Operate, and Manage
- D. Prepare, Plan, Design, Implement, Operate and Manage

**Answer: B**

**QUESTION: 3**

In which phase is a systems acceptance test plan developed and documented?

- A. Implement
- B. Design
- C. Prepare
- D. Operate

**Answer: B**

**QUESTION: 4**

In which service component of the optimize phase would you assess the routing and switching system and recommend activities such as optimizing device configurations, capacity planning, or traffic analysis?

- A. Change Management
- B. Security Assessment
- C. Operations Assessment
- D. Security Administration
- E. Operations Readiness Assessment
- F. Technology Assessment

**Answer:** F

**QUESTION: 5**

You have a customer who would like to upgrade their branch to Metro Ethernet. Which profile can be used as a migration profile to show the customer how to upgrade their branch?

- A. single-tier branch profile
- B. double-tier branch profile
- C. triple-tier branch profile
- D. multitier branch profile

**Answer:** B

**QUESTION: 6**

When designing a branch office solution for a customer, you want to share the pros and cons of the Internet WAN deployment model. Which are two characteristics of this model? (Choose two.)

- A. It is the most commonly used deployment model.
- B. It provides the most cost savings.
- C. It is the least secure of the three deployment models.
- D. It is a traditional hub-and-spoke model.
- E. Data privacy is protected through traffic separation such as Frame Delay.

**Answer:** B, C

**QUESTION: 7**

You need a solution that provides high-level integrated security and seamless roaming. Which Cisco advanced technology should you implement?

- A. IP communications
- B. Mobility
- C. Security
- D. Network Management
- E. Data Center

**Answer:** B

**QUESTION: 8**

You need to document an existing network. What should you do first?

- A. map the existing network topology
- B. characterize the existing network and sites
- C. audit the existing network and sites
- D. obtain organizational input

**Answer:** D

**QUESTION: 9**

A customer wants to know about the benefits of the Cisco Validated Designs (CVDs). What are the two primary benefits to the customer that you should share? (Choose two.)

- A. CVDs showcase innovation and next-generation technology.
- B. CVDs reduce pre-production testing and accelerate deployment planning.
- C. With CVDs, customer requirements are assumed by the specific design.
- D. CVDs baseline-tested designs give deployment confidence.
- E. CVDs are backed by AS services.

**Answer:** B, D

**QUESTION: 10**

What are three characteristics of Cisco Validated Designs (CVDs)? (Choose three.)

- A. With CVDs, products and technologies are viewed as siloed components.
- B. CVDs allow customers to take designs and get to production more quickly.
- C. CVDs allow you to showcase innovation and next-generation technology.
- D. CVDs provide proof-of-concept testing.
- E. CVDs are a cross-segment effort between commercial and enterprise segment teams only.

**Answer:** B, C, D

**QUESTION: 11**

What are three characteristics of the Cisco Validated Designs (CVDs) architectural selling approach? (Choose three.)

- A. This selling approach is based on customer requirements.
- B. Integrated solutions are aligned to customer buying patterns.
- C. This selling approach does not support verticalization.
- D. The PINs have been pushed out to partners and have been well-received.

**Answer:** A, B, D

**QUESTION: 12**

What is the focus for Cisco for driving integrated networks?

- A. CDO
- B. CMO
- C. CVDs
- D. PIN

**Answer:** D

**QUESTION: 13**

Which three features does the Cisco Catalyst 4500 Series Switch offer? (Choose three.)

- A. nonblocking switching capabilities for Layers 2 and 3 only
- B. integrated resiliency in software and hardware
- C. built-in spam blocker
- D. concurrent services provisioning
- E. TCAM resources that enable "high feature capacity" with 64,000 entries
- F. policy-based VM connectivity

**Answer:** B, D, E

**QUESTION:** 14

You need switches that will provide ideal access-layer services for a small enterprise LAN environment as well as ensure maximum productivity and investment protection by supporting deployments of new applications such as IP telephony, wireless access, and video surveillance.

- A. Cisco Catalyst Express 500
- B. Cisco Catalyst 2960 Series Switch
- C. Cisco Catalyst 3560 Series Switch
- D. Cisco Catalyst Blade Switch 3000 Series

**Answer:** C

**QUESTION:** 15

What are four characteristics of the Cisco ASR 1000 Series Aggregation Services Routers? (Choose four.)

- A. It is launched with three chassis sizes: 2RU, 4RU, and 6RU.
- B. It provides SPAs that cannot be used interchangeably with other platforms.
- C. It has a QFP that provides faster, easier provisioning of new services, low-touch deployment, and faster qualification.
- D. It provides a multiplexer system that allows rack-and-roll architecture.
- E. It provides high availability with complete integration of control plane and forwarding plane.
- F. It provides state-of-the-art QoS and is designed to be oversubscribed so that it is able to handle more traffic than the total system bandwidth.

**Answer:** A, C, D, F

**QUESTION: 16**

When designing an advanced technology-ready organization, what four features should you look for when analyzing the initial performance of any solution? (Choose four.)

- A. It should allow for future growth.
- B. It should have no component above 50 percent of its maximum.
- C. It should only use a select few devices and links.
- D. It should use QoS mechanisms.
- E. It should not use an SLA.
- F. It should only consider top-of-rack installations.

**Answer:** A, B, D, F

**QUESTION: 17**

Your customer is a major international airport. The airport requires keeping connectivity options flexible for wireless and wired clients, video surveillance, and baggage distribution. At the same time, it requires isolating specific closed user groups such as air traffic control communication. Which design best suits the needs of your customer?

- A. A full-mesh design with no dedicated core.
- B. A two-layered design with a Cisco Catalyst 4500 Series Switch at the core layer.
- C. A three-layered design with a Cisco Catalyst 3750 Series Switch at the core layer.
- D. A three-layered design with a Cisco Catalyst 6500 Series Switch at the core layer.

**Answer:** D

**QUESTION: 18**

Your customer needs to send encrypted data among three branch offices. You want to ensure that all devices in a group can successfully exchange encrypted packets. Which transport network augmentation will provide any-to-any IPsec connectivity to ensure that successful packet exchange occurs?

- A. DMVPN
- B. GET VPN
- C. GRE over IPsec
- D. VTIs

**Answer:** B

**QUESTION:** 19

You are designing a campus network for your customer. You need to provide the customer with uplink connectivity because a single access switch is used to provide connectivity to more than one user group. Which access layer component should you deploy?

- A. IEEE 802.1Q trunks
- B. integrated security features
- C. IP telephony design
- D. spanning-tree mechanisms

**Answer:** A

**QUESTION:** 20

Which Cisco PIN architecture uses Cisco Integrated Services Routers to support existing and emerging IP technologies, including IP telephony and video, point-of-sale terminals, kiosks, and RFID devices?

- A. Data Center
- B. Teleworker
- C. Campus
- D. Branch

**Answer:** D

**QUESTION:** 21

Which Cisco advanced technology provides interconnected storage area networks so that you can reduce costs and improve reliability?



- A. Cisco Unified Communications
- B. Data Center
- C. Mobility
- D. Network Management
- E. Security

**Answer:** B

**QUESTION: 22**

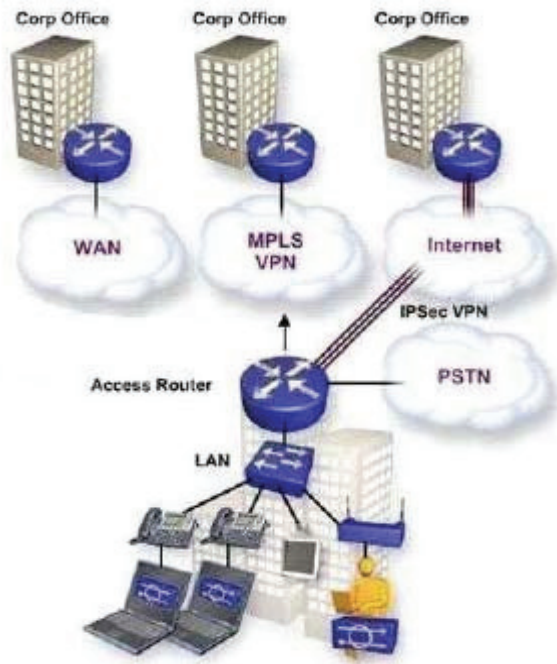
During the baselining process, what should you do immediately after you compile an inventory?

- A. verify that the SNMP MIB is supported in the relevant core device
- B. poll and record specific SNMP MIB objects from the device
- C. fix identified, immediate problems
- D. implement monitoring using SNMP or RMON

**Answer:** A

**QUESTION: 23**

Refer to the exhibit. Which PIN architecture is represented?



- A. Branch
- B. Campus
- C. Data Center
- D. Teleworker

**Answer:** A

**QUESTION:** 24

Which two technologies are associated with the Campus PIN architecture?  
(Choose two.)

- A. DMVPN
- B. GET VPN
- C. IPv4 to IPv6
- D. Layer 2 to Layer 3
- E. MPLS VPN

**Answer:** C, D

**QUESTION: 25**

What are three important characteristics of the Cisco Catalyst 2960G-24TC switch? (Choose three.)

- A. each Ethernet 10/100/1000 port supports up to six priority queues each with two drop thresholds
- B. does not support 802.3af PoE
- C. uses the GBIC/SFP form factor for dual-purpose ports
- D. provides a maximum forwarding bandwidth of 32 Gbps
- E. contains 24 Ethernet 10/100/1000 ports and 2 dual-purpose slots

**Answer:** B, C, D

**QUESTION: 26**

Which service component would you typically perform prior to the handover to the customer's operations organization and involves running system operations to ensure that the solution is ready for production?

- A. Systems Integration
- B. Acceptance Testing
- C. Skill Assessment
- D. Project Close Out
- E. Security Check

**Answer:** B

**QUESTION: 27**

What is a primary objective of the security architecture assessment?

- A. document power and UPS availability
- B. to integrate routing and switching components
- C. create a design specification document
- D. document the customer's current and future technology projects

**Answer:** B

**QUESTION: 28**

Refer to the exhibit. What are three key benefits of implementing this branch solution using the components listed? (Choose three.)

To Read the [Whole Q&As](#), please purchase the [Complete Version](#) from [Our website](#).

# Trying our product !

- ★ **100%** Guaranteed Success
- ★ **100%** Money Back Guarantee
- ★ **365 Days** Free Update
- ★ **Instant Download** After Purchase
- ★ **24x7** Customer Support
- ★ Average **99.9%** Success Rate
- ★ More than **69,000** Satisfied Customers Worldwide
- ★ Multi-Platform capabilities - **Windows, Mac, Android, iPhone, iPod, iPad, Kindle**

## Need Help

Please provide as much detail as possible so we can best assist you.

To update a previously submitted ticket:



 <b>One Year Free Update</b> <p>Free update is available within One Year after your purchase. After One Year, you will get 50% discounts for updating. And we are proud to boast a 24/7 efficient Customer Support system via Email.</p>	 <b>Money Back Guarantee</b> <p>To ensure that you are spending on quality products, we provide 100% money back guarantee for 30 days from the date of purchase.</p>	 <b>Security &amp; Privacy</b> <p>We respect customer privacy. We use McAfee's security service to provide you with utmost security for your personal information &amp; peace of mind.</p>
---	---	--

[Guarantee & Policy](#) | [Privacy & Policy](#) | [Terms & Conditions](#)

Any charges made through this site will appear as Global Simulators Limited.

All trademarks are the property of their respective owners.

Copyright © 2004-2015, All Rights Reserved.