



642-648^{Q&As}

Deploying Cisco ASA VPN Solutions (VPN v2.0)

Pass Cisco 642-648 Exam with 100% Guarantee

Free Download Real Questions & Answers **PDF** and **VCE** file from:

<https://www.passapply.com/642-648.html>

100% Passing Guarantee
100% Money Back Assurance

Following Questions and Answers are all new published by Cisco
Official Exam Center

-  **Instant Download** After Purchase
-  **100% Money Back** Guarantee
-  **365 Days** Free Update
-  **800,000+** Satisfied Customers





QUESTION 1

Authorization of a clientless SSL VPN defines the actions that a user may perform within a clientless SSL VPN session. Which statement is correct concerning the SSL VPN authorization process?

- A. Remote clients can be authorized by applying a dynamic access policy, which is configured on an external AAA server.
- B. Remote clients can be authorized externally by applying group parameters from an external database.
- C. Remote client authorization is supported by RADIUS and TACACS+ protocols.
- D. To configure external authorization, you must configure the Cisco ASA for cut-through proxy.

Correct Answer: B

http://www.cisco.com/en/US/docs/security/asa/asa91/configuration/vpn/vpn_extserver.html

QUESTION 2

When preconfiguring a Cisco AnyConnect profile for the user group, which file is output by the Cisco AnyConnect profile editor?

- A. user.ini
- B. user.html
- C. user.pcf
- D. user.xml

Correct Answer: D

http://www.cisco.com/en/US/docs/security/vpn_client/anyconnect/anyconnect30/administration/guide/ac02asaconfig.html

QUESTION 3

Match the protocol or port number on the left with the correct protocol or application on the right. (Not all items used.)

Select and Place:



Match the protocol or port number on the left with the correct protocol or application on the right. (Not all items used.)

IP Protocol 50	NAT Traversal
IP Protocol 51	IKE
UDP Port 500	ESP
UDP Port 4500	IPsec over TCP
TCP Port 10000	
TCP Port 443	

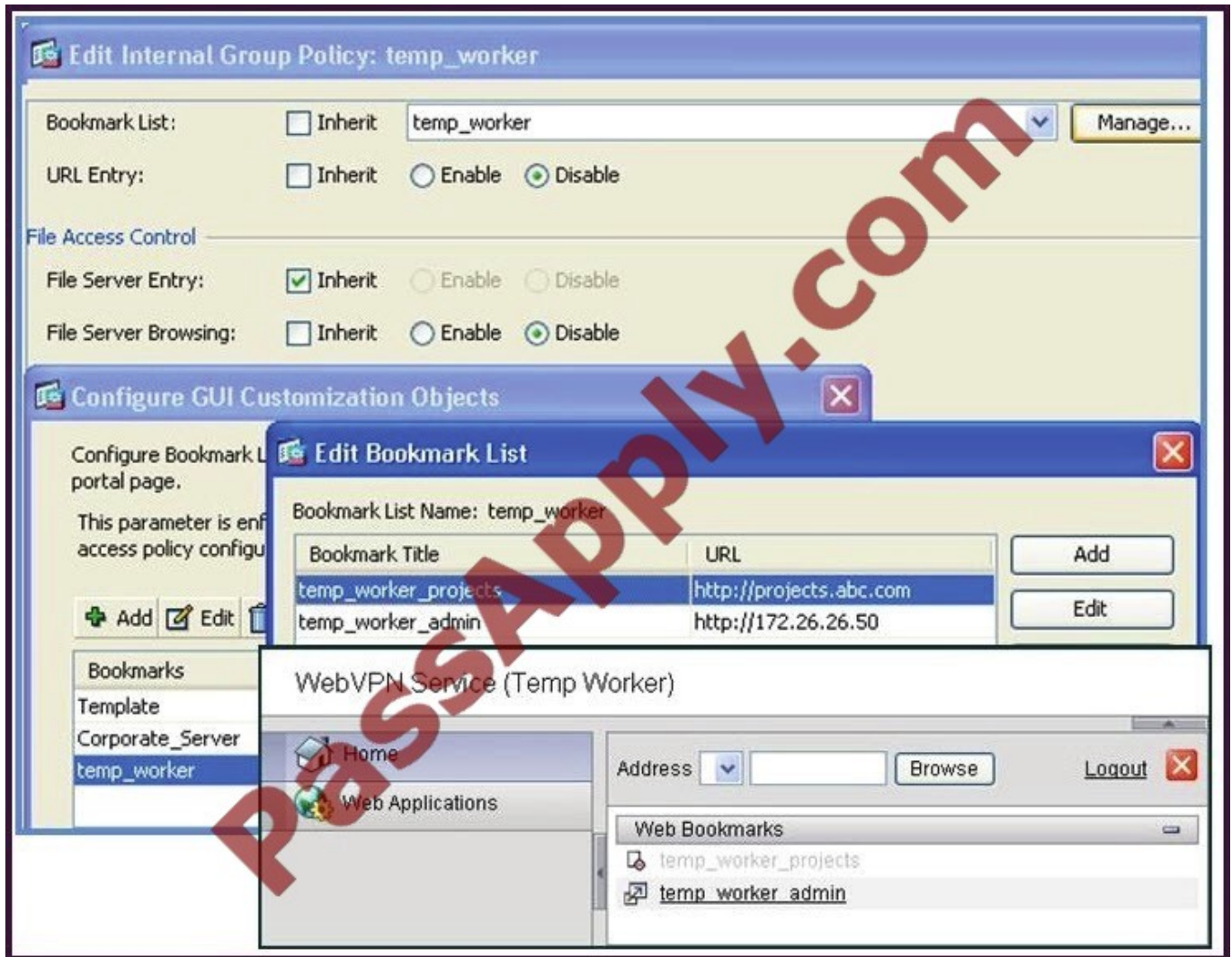
Correct Answer:

Match the protocol or port number on the left with the correct protocol or application on the right. (Not all items used.)

	UDP Port 4500
IP Protocol 51	UDP Port 500
	IP Protocol 50
	TCP Port 10000
TCP Port 443	

QUESTION 4

Refer to the exhibit.



A new network engineer configured the ABC adaptive security appliance with two bookmarks for a new temporary worker. The temporary worker can connect to the administrator server via the temp_worker_admin bookmark but cannot

connect to the project server via the temp_worker_projects bookmark (which is grayed out). It was determined that the URL and IP addressing information in the GUI screens is correct.

What is wrong with the configuration?

- A. URL Entry should be enabled.
- B. The File Server Entry Inherit parameter should be overwritten and set for enabled.
- C. The DNS server information is incorrect.
- D. File Server Browsing should be enabled.

Correct Answer: C

QUESTION 5



Which two options are correct regarding IKE and IPv6 VPN support on the Cisco ASA using version 8.4? (Choose two.)

- A. The Cisco ASA supports full IKEv2 IPv6 for site-to-site VPNs only.
- B. The Cisco ASA supports full IKEv2 IPv6 for remote-access VPNs.
- C. The Cisco ASA supports IKEv1 and IKEv2 configuration on the same crypto map.
- D. The Cisco ASA supports negotiation of authentication type using IKEv2 with IPv6.
- E. The Cisco ASA supports all types of VPN configurations when using IPv6

Correct Answer: AC

http://www.cisco.com/en/US/prod/collateral/vpndevc/ps6032/ps6094/ps6120/product_bulletin_c25-593781.html

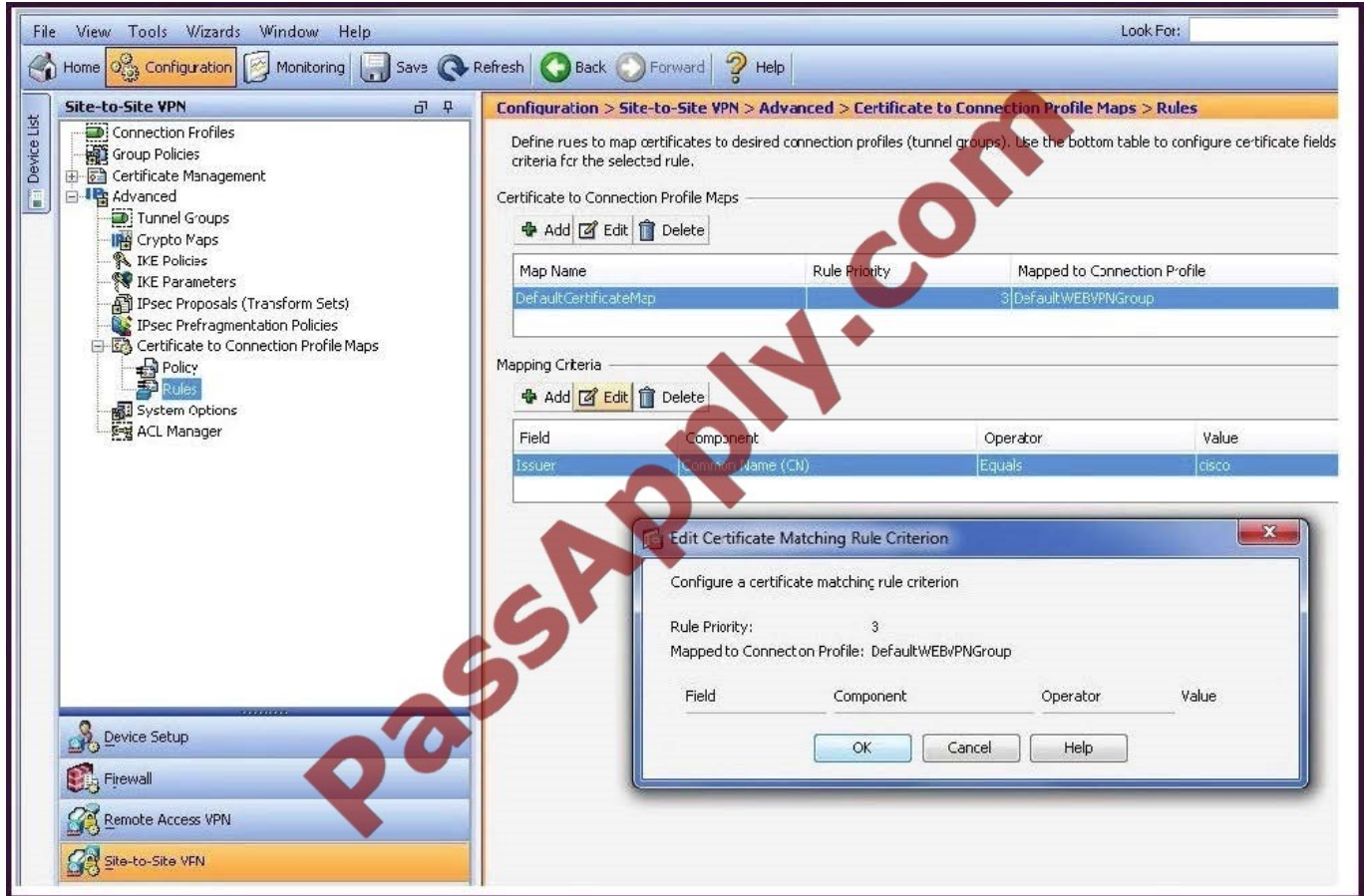
?IPv6 IPsec Site-to-Site VPN: Customers can now create encrypted IPsec VPN connections over IPv6 networks

http://www.cisco.com/en/US/docs/security/asa/asa84/configuration/guide/vpn_site2site.html#wp1061313

For IKEv2, you can configure multiple encryption and authentication types, and multiple integrity algorithms for a single policy. The ASA orders the settings from the most secure to the least secure and negotiates with the peer using that order. This allows you to potentially send a single proposal to convey all the allowed transforms instead of the need to send each allowed combination as with IKEv1.

QUESTION 6

Refer to the exhibit.



In the Edit Certificate Matching Rule Criterion window, you want to change the Mapped to Connection Profile. However, you cannot perform that action from this window.

Where should you navigate to and what should you do, in order to perform this change?

- A. Edit the entry in the Certificate Management window.
- B. Edit the entry in the Connection Profiles window.
- C. Edit the entry in the Certificate to Connection Profile Maps window.
- D. Edit the entry in IKE Policies window.
- E. Delete this entry in the Mapping Criteria window, and add a new entry in the same location.

Correct Answer: C

QUESTION 7

When configuring the Cisco ASA for VPN clustering, which IP address or addresses does the end-user device connect to?

- A. It connects to individual device addresses of the cluster as provided in the connection profile.
- B. It connects to the virtual address.



C. The virtual cluster manager sends the IP address of the least loaded device. The client then connects directly to that device.

D. The connection IP address is dependent upon whether the initiator is using SSL or IPsec.

Correct Answer: B

http://www.cisco.com/en/US/products/ps6120/products_configuration_example09186a00805fda25.shtml

QUESTION 8

Refer to the exhibit.

The screenshot displays the Cisco ASA configuration interface. The top navigation pane shows the path: Configuration > Remote Access VPN > Clientless SSL VPN Access > Group Policies. Below this is a table of Group Policies:

Name	Type	Tunneling Protocol	AAA Server Group
new_hire	Internal	ssl-client	-- N/A --
contractor	Internal	ssl-clientless,ssl-client	-- N/A --
employee	Internal	ssl-clientless,ssl-client	-- N/A --
management	Internal	ssl-client,ikev2	-- N/A --
engineering	Internal	ssl-client,ikev2	-- N/A --
DfltGrpPolicy (System Default)	Internal	ssl-clientless,ikev1,ikev2	-- N/A --

Below the table is the 'Edit User Account - contractor1' configuration page. The 'VPN Policy' section is expanded, showing the following settings:

- Group Policy: Inherit, new_hire
- Tunneling Protocols: Inherit, Clientless SSL VPN, SSL VPN Client, IPsec
- IPv4 Filter: Inherit
- IPv6 Filter: Inherit
- Connection Profile (Tunnel Group) Lock: Inherit, contractor
- Store Password on Client System: Inherit, Yes, No

The 'Connection Settings' section includes:

- Access Hours: Inherit
- Simultaneous Logins: Inherit
- Maximum Connect Time: Inherit
- Idle Timeout: Inherit

The 'Dedicated IP Address (Optional)' section shows:

- IP Address: 10.0.4.120
- Subnet Mask: 255.

Overlaid on the configuration page is a 'Login' dialog box with the following fields:

- GROUP: new_hire
- USERNAME: contractor1
- PASSWORD: [masked]
- Login button

When an SSL VPN user, contractor1, enters <https://192.168.4.2> (the outside address of the Cisco ASA appliance) into the browser, an SSL VPN Login screen appears.



In addition to the information that is contained in the Cisco ASDM configuration screens, what can an administrator determine about the state of the connection after the user clicks the Login button?

- A. The user login will succeed, and an IP address of 10.0.4.120 will be assigned.
- B. The user will be presented with a clientless VPN portal page.
- C. The user login will succeed, but the user will be connected to the "contractor" tunnel group.
- D. The login will fail.

Correct Answer: D

QUESTION 9

You are configuring bookmarks for the clientless SSL VPN portal without the use of plug-ins.

Which three bookmark types are supported? (Choose three.)

- A. RDP
- B. HTTP
- C. FTP
- D. CIFS
- E. SSH
- F. Telnet

Correct Answer: BCD

http://www.cisco.com/en/US/docs/security/asa/asa80/asdm60/ssl_vpn_deployment_guide/deploy.html#w p1227212

QUESTION 10

An XYZ Corporation systems engineer, while making a sales call on the ABC Corporation headquarters, tried to access the XYZ sales demonstration folder to transfer a demonstration via FTP from an ABC conference room behind the firewall. The engineer could not reach XYZ through the remote-access VPN tunnel. From home the previous day, however, the engineer did connect to the XYZ sales demonstration folder and transferred the demonstration via IPsec over DSL.

To get the connection to work and transfer the demonstration, what should the engineer do?

- A. Change the MTU size on the IPsec client to account for the change from DSL to cable transmission.
- B. Enable the local LAN access option on the IPsec client.
- C. Enable the IPsec over TCP option on the IPsec client.
- D. Enable the clientless SSL VPN option on the PC.



Correct Answer: C

IP Security (IPSec) over Transmission Control Protocol (TCP) enables a VPN Client to operate in an environment in which standard Encapsulating Security Protocol (ESP, Protocol 50) or Internet Key Exchange (IKE, User Datagram Protocol (UDP) 500) cannot function, or can function only with modification to existing firewall rules. IPSec over TCP encapsulates both the IKE and IPSec protocols within a TCP packet, and it enables secure tunneling through both Network Address Translation (NAT) and Port Address Translation (PAT) devices and firewalls

QUESTION 11

The LAN-to-LAN tunnel is not established, but an administrator can ping the remote Cisco ASA.

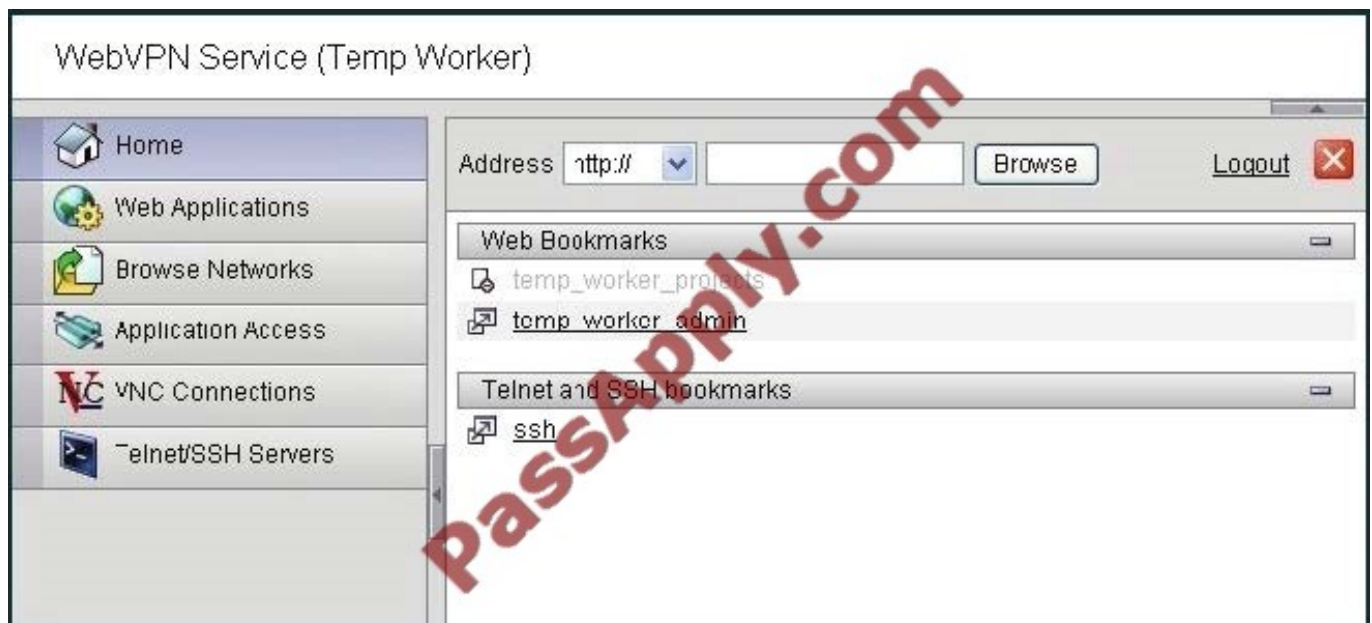
Which three IPsec LAN-to-LAN configuration parameters should the administrator verify at both ends of the tunnel? (Choose three.)

- A. pre-shared key
- B. extended authentication password
- C. extended authentication username
- D. crypto ACL source IP address
- E. crypto ACL destination IP address
- F. tunnel connection-type

Correct Answer: ADE

QUESTION 12

Refer to the exhibit.





Today was the first day on a new project for an offsite temporary worker at the XYZ Corporation. The worker was told to launch the SSL VPN session and then use the smart tunnel application to start a remote desktop application on the project server, projects_server.xyz.com. The worker looked at the portal screen that was provided, but she did not know how to access the smart tunnel application.

As the help desk person, what should you instruct the temporary worker to do?

- A. Click the Web Applications button.
- B. Click the Applications Access button.
- C. Click the Browse Networks button.
- D. On the Home page, click the Address drop-down menu, choose RDP://, and fill in the destination host name, which is projects_server.abc.com.

Correct Answer: B

[642-648 PDF Dumps](#)

[642-648 VCE Dumps](#)

[642-648 Brindumps](#)



To Read the [Whole Q&As](#), please purchase the [Complete Version](#) from [Our website](#).

Try our product !

- 100% Guaranteed Success
- 100% Money Back Guarantee
- 365 Days Free Update
- Instant Download After Purchase
- 24x7 Customer Support
- Average 99.9% Success Rate
- More than 800,000 Satisfied Customers Worldwide
- Multi-Platform capabilities - [Windows](#), [Mac](#), [Android](#), [iPhone](#), [iPod](#), [iPad](#), [Kindle](#)

We provide exam PDF and VCE of Cisco, Microsoft, IBM, CompTIA, Oracle and other IT Certifications. You can view Vendor list of All Certification Exams offered:

<https://www.passapply.com/allproducts>

Need Help

Please provide as much detail as possible so we can best assist you.
To update a previously submitted ticket:



 <p>One Year Free Update Free update is available within One Year after your purchase. After One Year, you will get 50% discounts for updating. And we are proud to boast a 24/7 efficient Customer Support system via Email.</p>	 <p>Money Back Guarantee To ensure that you are spending on quality products, we provide 100% money back guarantee for 30 days from the date of purchase.</p>	 <p>Security & Privacy We respect customer privacy. We use McAfee's security service to provide you with utmost security for your personal information & peace of mind.</p>
---	---	--

Any charges made through this site will appear as Global Simulators Limited.
All trademarks are the property of their respective owners.
Copyright © passapply, All Rights Reserved.