



642-035^{Q&As}

Troubleshooting Cisco Data Center Unified Computing

Pass Cisco 642-035 Exam with 100% Guarantee

Free Download Real Questions & Answers **PDF** and **VCE** file from:

<https://www.passapply.com/642-035.html>

100% Passing Guarantee
100% Money Back Assurance

Following Questions and Answers are all new published by Cisco
Official Exam Center

-  **Instant Download** After Purchase
-  **100% Money Back** Guarantee
-  **365 Days** Free Update
-  **800,000+** Satisfied Customers





QUESTION 1



Instructions

- THIS TASK DOES NOT REQUIRE DEVICE CONFIGURATION.
- Before beginning the questions, carefully read the information in the Scenario tab and familiarize yourself with the network topology.
- To access the multiple-choice questions, click on the numbered boxes on the left of the top panel.
- There are four multiple-choice questions with this task. Be sure to answer all four questions before clicking the Next button.
- Use the tabs at the bottom of the question to navigate between the Topology and question-specific Exhibits. Exhibit_1 maps to Question 1, and so on.

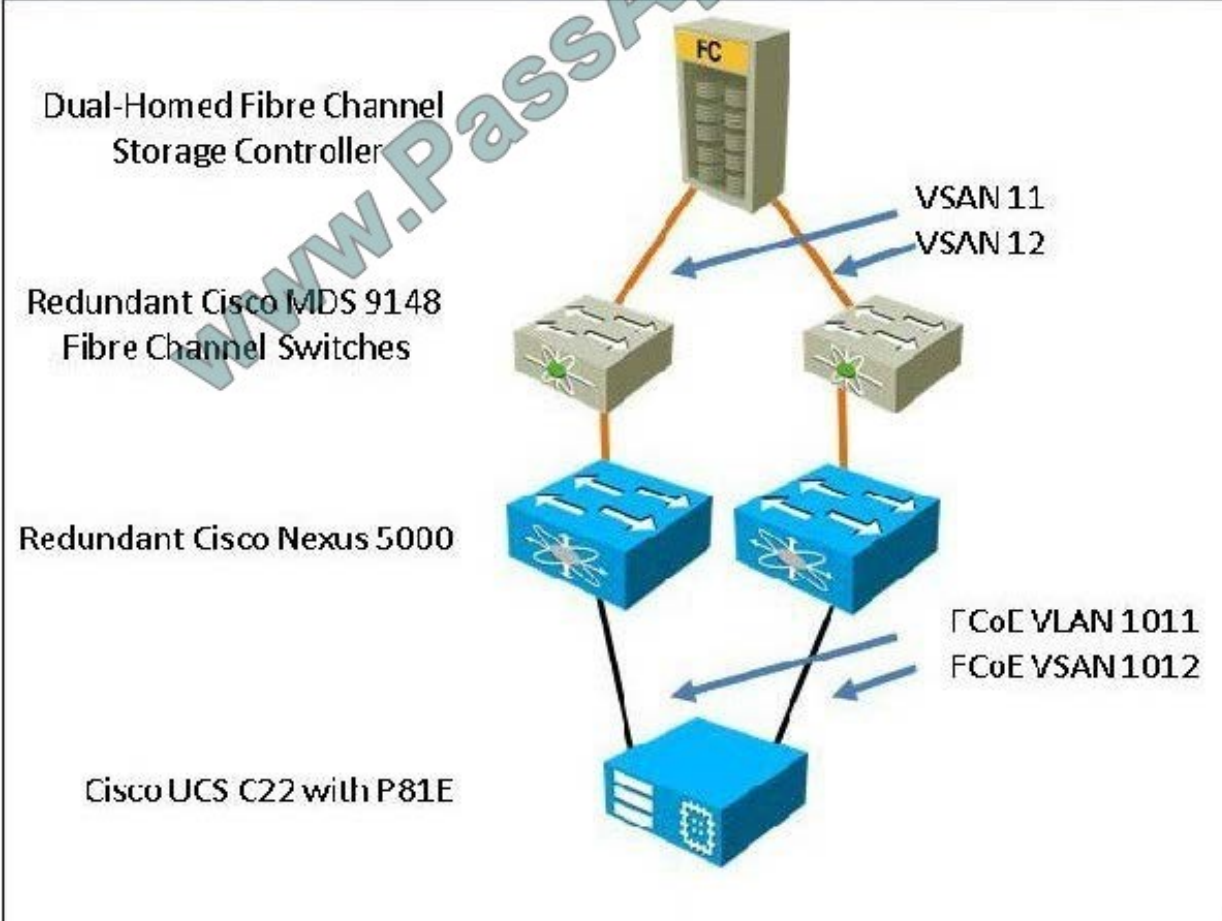
Scenario

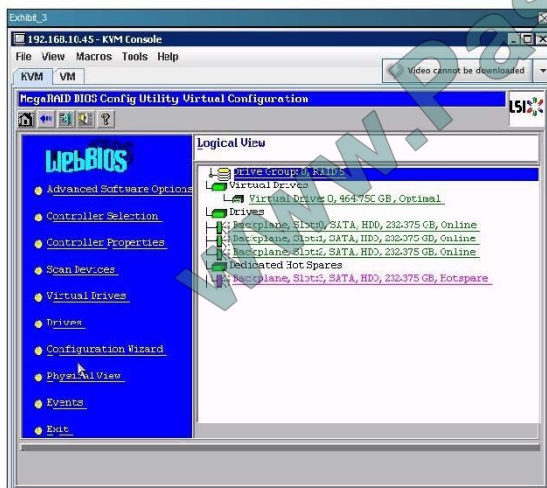
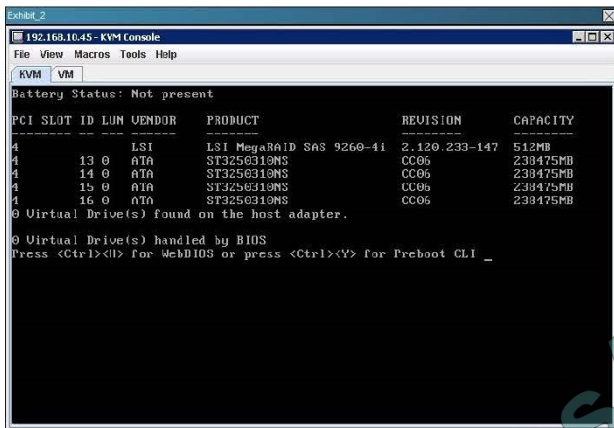
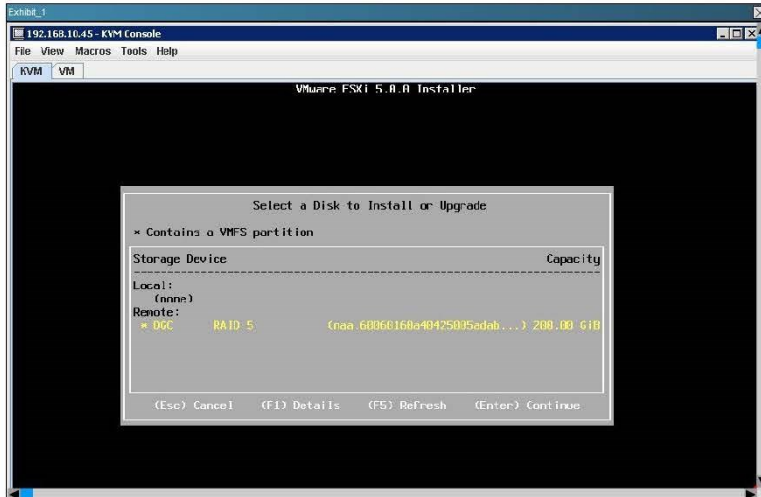
Your customer has purchased a Cisco UCS C22 M2 server equipped with an LSI MegaRAID 9260-4i, four SAS hard drives, and a Cisco UCS P81E VIC.

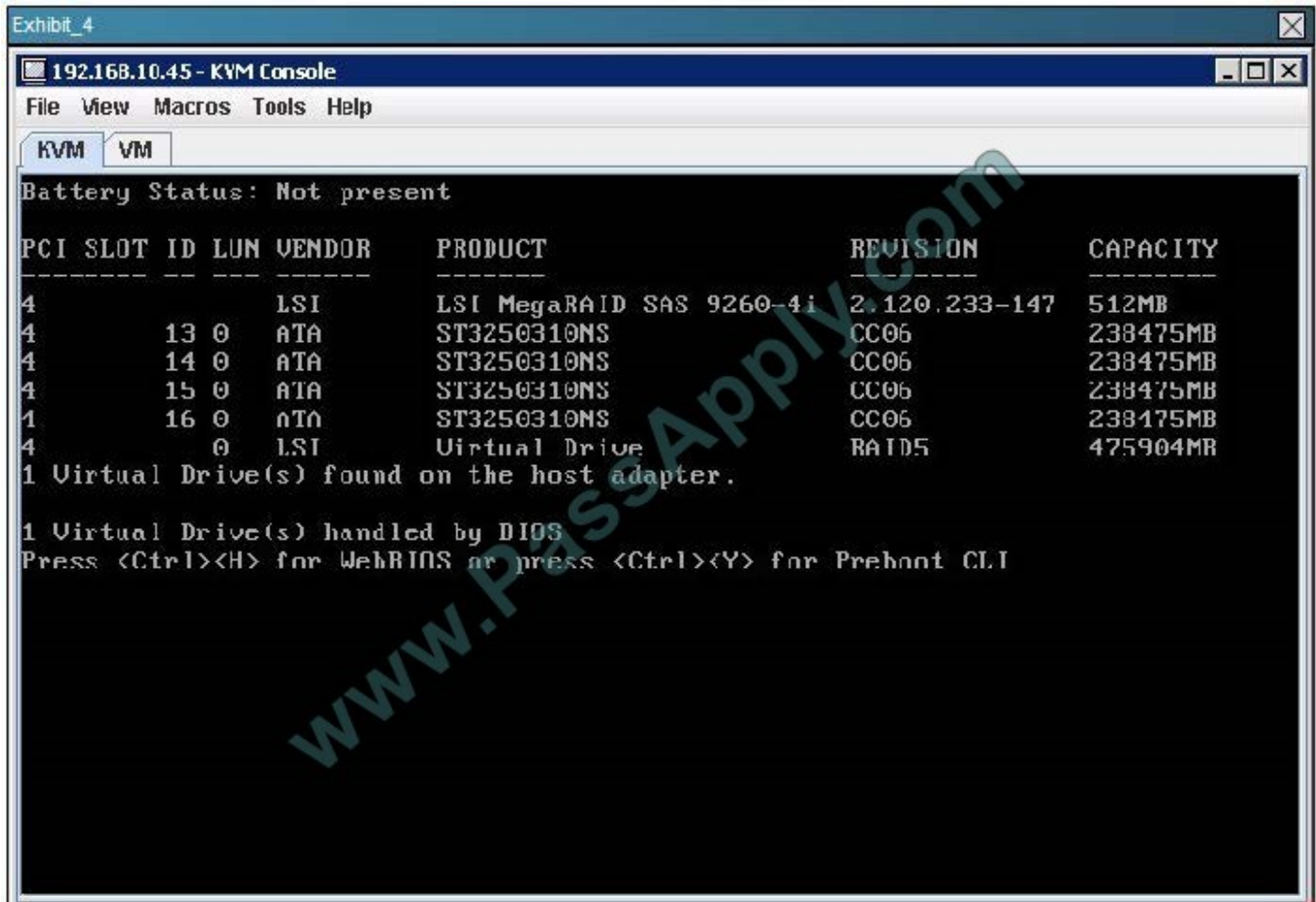
Because Fibre Channel storage is at a premium at this data center, the customer decides to boot VMware ESXi 5.0 from local storage and attach to the VMs on a VMFS LUN on a Fibre Channel storage controller with a large RAID array.

The customer is encountering issues connecting to local storage, and you are called on-site to get the server into production.

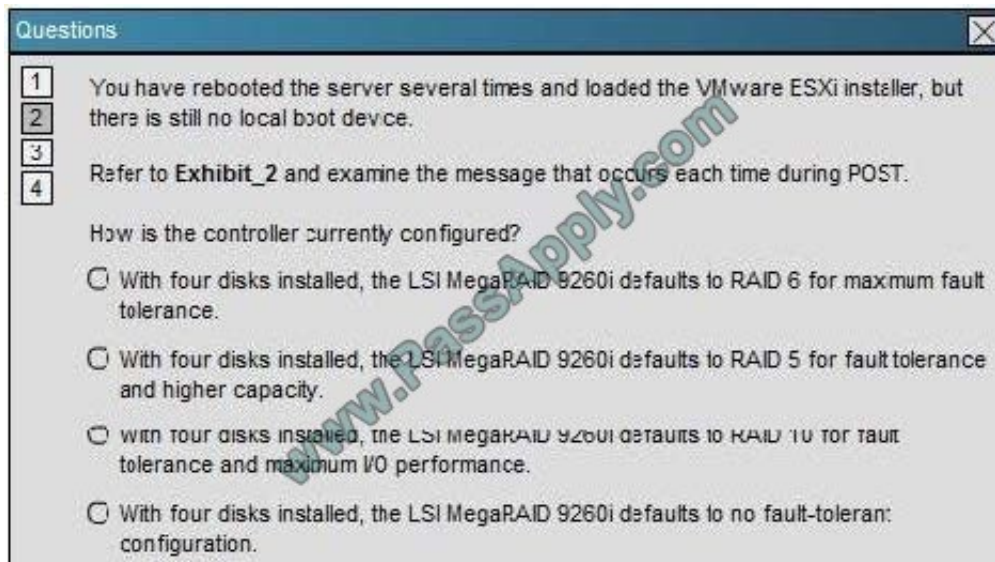
Topology







Point and Shoot:



Hot Area:



Questions

1 You have rebooted the server several times and loaded the VMware ESXi installer, but there is still no local boot device.

2

3

4 Refer to Exhibit_2 and examine the message that occurs each time during POST.

How is the controller currently configured?

☐ With four disks installed, the LSI MegaRAID 9260i defaults to RAID 6 for maximum fault tolerance.

☐ With four disks installed, the LSI MegaRAID 9260i defaults to RAID 5 for fault tolerance and higher capacity.

☐ With four disks installed, the LSI MegaRAID 9260i defaults to RAID 10 for fault tolerance and maximum I/O performance.

☐ With four disks installed, the LSI MegaRAID 9260i defaults to no fault-tolerant configuration.

Correct Answer:

Questions

1 You have rebooted the server several times and loaded the VMware ESXi installer, but there is still no local boot device.

2

3

4 Refer to Exhibit_2 and examine the message that occurs each time during POST.

How is the controller currently configured?

☐ With four disks installed, the LSI MegaRAID 9260i defaults to RAID 6 for maximum fault tolerance.

☐ With four disks installed, the LSI MegaRAID 9260i defaults to RAID 5 for fault tolerance and higher capacity.

☐ With four disks installed, the LSI MegaRAID 9260i defaults to RAID 10 for fault tolerance and maximum I/O performance.

☒ With four disks installed, the LSI MegaRAID 9260i defaults to no fault-tolerant configuration.

QUESTION 2

A customer is configuring VSANs in a Cisco UCS domain. After configuring the VSANs 3840, 3841, and 3842 in FC end-host mode, the customer sees that these VSANs are not operational and that Cisco UCS Manager is raising faults. What is the cause of this problem?

- A. VSANs 3840, 3841, and 3842 should be in the allowed list on the trunk to clear the fault.
- B. VSANs 3840 to 4079 cannot be used in Fibre Channel end-host mode in a Cisco UCS domain.
- C. The fabric interconnect needs to be configured in switching mode and the VSANs need to be allowed on the trunk.
- D. Use the UCS CLI to clear the fault on the VSAN trunk to forward the VSANs with faults.



Correct Answer: B

QUESTION 3

While updating firmware in a Cisco UCS environment, what will the Cisco UCS Manager do?

- A. show you all versions available on Cisco.com
- B. show you all versions downloaded to the Cisco UCS Manager
- C. show you only versions that are supported in your environment
- D. show you only versions that you selected to show
- E. show you old and new versions from your download

Correct Answer: C

QUESTION 4

You successfully install VMware ESXi 5.0 U1 on a Cisco UCS B200 M3 server to a Fibre Channel LUN. When you reboot the server, you see the message "Reboot and Select Proper Boot device or insert Boot Media in selected Boot device and press a key." What are the first two pieces of information you should gather to troubleshoot the boot failure? (Choose two.)

- A. Connect to the NX-OS shell via the CLI and run the show npv flogi-table command.
- B. SSH to the MDS 9124 and run the show flogi database command.
- C. Validate the boot target WWPN and LUN ID in the service profile.
- D. Validate the correct source WWPN in the service profile vHBA definition.
- E. Validate zoning for your WWPN on the Cisco MDS 9124.
- F. Validate that the boot order indicates the vHBA as the first device.
- G. Ensure LUN masking is correctly configured on the storage controller.

Correct Answer: CF

QUESTION 5

Which four tech support files can you create with the Cisco UCS Manager that you can submit to Cisco TAC for support? (Choose four.)

- A. UCSM
- B. disk LUNs
- C. fabric extender



- D. memory
- E. rack server
- F. chassis
- G. server cache

Correct Answer: ACEF

QUESTION 6

During the installation of Windows 2008 64-bit operating system on a Cisco UCS server, the RAID controller is not found. What is the cause of the problem?

- A. The Cisco IMC firmware needs to be updated.
- B. The LSI option ROM needs to be configured by pressing Ctrl-H during post.
- C. The LSI drivers are not bundled and need to be loaded by clicking the Load Driver option to point to the correct drivers.
- D. Windows 2008 64-bit operating system is not supported on Cisco UCS servers.

Correct Answer: C

QUESTION 7

What should you do when you see faults during the initial setup and discovery process?

- A. Take note and address the faults.
- B. You can safely ignore these faults.
- C. Log them and try to address the first one.
- D. Reboot until the error messages go away.

Correct Answer: B

QUESTION 8

You must check the path that vNICs uses to communicate. How can you verify whether a vNIC on a Cisco UCS server is in an active state or a failover state?

- A. Run the show interface brief command.
- B. Connect to the adapter and execute the Master Control Program.
- C. Compare the state on both fabric interconnects.



D. Run the show interface status command.

Correct Answer: C

QUESTION 9

Instructions

- Click on the Exhibit1 tab to access the topology the Cisco UCS C-Series server is a member.
- To access the multiple-choice questions, click on the numbered boxes on the left of the top panel.
- There are four multiple-choice questions with this task.
- Refer to the included per-question screenshot for reference.
- Be sure to answer all four questions before selecting the **Next** button.

Scenario

In this scenario, you will answer questions about Cisco UCS C-Series server configuration based on screenshots from the Cisco IMC GUI.

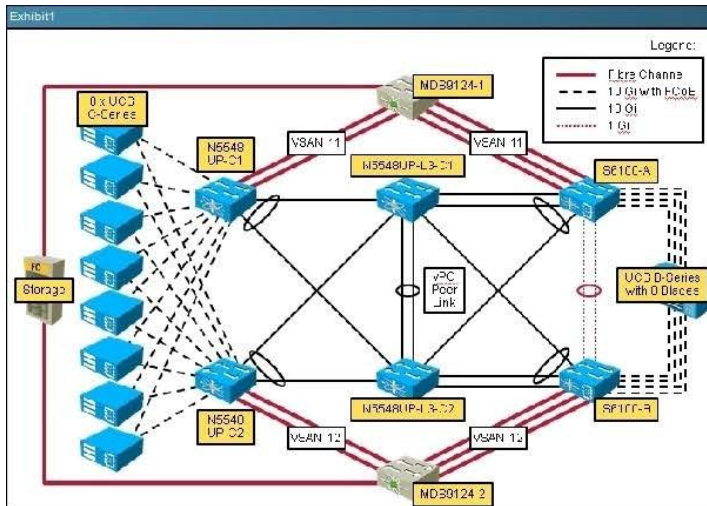


Exhibit2

vHBA Properties

General

Name: fc0

World Wide Node Name: AUTO 20:00:00:25:65:10:10:1

World Wide Port Name: AUTO 20:00:00:25:65:10:03:0

FC SAN Boot: ☒

Enable Persistent LUN Binding: ☐

Uplink Port: 0

MAC Address: AUTO A4:4C:11:12:ED:5D

Default VLAN: NONE (1 - 4094)

Class of Service: 3

Rate Limit: OFF (1 - 10000 Mbps)

PCIe Device Order: ANY (0 - 17)

Buttons: Save Changes, Reset Values, Cancel

Exhibit3

Modify Adapter Properties

Description:

Enable FIP Mode: ☒

Enable HJIV Mode: ☐

Number of VM FEX Interfaces: 1

Buttons: Save Changes, Close

Exhibit4

General

Name:

Stripe Size: 64 KB

Drives Per Span: 4

Span Depth: 1

Access Fcl cy: Read-Write

Cache Fcl cy: Direct

Read Ahead Fcl cy: Always

Write Cache Fcl cy: Write Through

Disk Cache Fcl cy: Unchanged

Allow Background Init: true

Auto Snapshot: false

Auto Delete Oldest: true

Exhibit5

User name: admin

Password:

Buttons: Log In, Cancel

Log in failed. Check user name and password and try again.



Refer to Exhibit 5. Which of the following is true regarding password recovery for the Cisco IMC GUI interface?

- A. From the KVM Console, press F12 during POST to reset the credentials to admin/password
- B. Type RECOVER into the Username field, and then type SYSTEM in the Password field to enter recovery mode
- C. Refer to the model-specific Cisco UCS C-Series Hardware guide to learn the location of the recovery jumper on the server motherboard
- D. Enter the Cisco IMC BIOS to reset the GUI password

Correct Answer: D

QUESTION 10

A customer calls in a trouble ticket and explains that after a power failure, the UPS was discovered to be defective and the Cisco UCS C210 M2 server running Windows 2008 R2 went down without proper shutdown. After restarting the server, you discover the RAID 5 array rebuilding parity. Which write-cache settings on the LSI MegaRAID 9260-4i controller explain this symptom?

- A. write back
- B. write through
- C. write back with BBU
- D. no write cache
- E. no hot spare

Correct Answer: A

QUESTION 11

Refer to the exhibit.



The screenshot shows a login window titled "Login". It contains three input fields: "User Name" with the value "cisco\wizcog", "Password" with masked characters, and "Domain" with a dropdown menu showing "F340-31-16-UCS-2 (Native)". Below these fields is a red error box with a white 'x' icon and the text: "Login Error: Failed login info: UCSM is not available on secondary node". At the bottom right are "Login" and "Cancel" buttons. A large red watermark "PASSAPPLY.COM" is diagonally across the center.

Which mistake did the UCS administrator make when trying to access the GUI?

- A. specified the incorrect login domain
- B. did not use the VIP
- C. tried to login before the GUI had fully booted up
- D. password is incorrect
- E. attempted to login to the subordinate cluster peer

Correct Answer: E

QUESTION 12

You discover that a new blade server encounters power spikes during peak hours. Which action occurs during the power spikes if you use manual blade-level power capping?

- A. The blade shuts down.
- B. An alert is generated.
- C. Power is reduced.
- D. The chassis enters standby mode.

Correct Answer: C

[642-035 PDF Dumps](#)

[642-035 Study Guide](#)

[642-035 Exam Questions](#)



VCE & PDF

PassApply.com

<https://www.passapply.com/642-035.html>

2021 Latest passapply 642-035 PDF and VCE dumps Download

To Read the [Whole Q&As](#), please purchase the [Complete Version](#) from [Our website](#).

Try our product !

100% Guaranteed Success

100% Money Back Guarantee

365 Days Free Update

Instant Download After Purchase

24x7 Customer Support

Average 99.9% Success Rate

More than 800,000 Satisfied Customers Worldwide

Multi-Platform capabilities - [Windows](#), [Mac](#), [Android](#), [iPhone](#), [iPod](#), [iPad](#), [Kindle](#)

We provide exam PDF and VCE of Cisco, Microsoft, IBM, CompTIA, Oracle and other IT Certifications. You can view Vendor list of All Certification Exams offered:

<https://www.passapply.com/allproducts>

Need Help

Please provide as much detail as possible so we can best assist you.

To update a previously submitted ticket:



 One Year Free Update Free update is available within One Year after your purchase. After One Year, you will get 50% discounts for updating. And we are proud to boast a 24/7 efficient Customer Support system via Email.	 Money Back Guarantee To ensure that you are spending on quality products, we provide 100% money back guarantee for 30 days from the date of purchase.	 Security & Privacy We respect customer privacy. We use McAfee's security service to provide you with utmost security for your personal information & peace of mind.
---	---	--

Any charges made through this site will appear as Global Simulators Limited.

All trademarks are the property of their respective owners.

Copyright © passapply, All Rights Reserved.