

**100%** Money Back  
**Guarantee**

**Vendor:** Cisco

**Exam Code:** 640-553

**Exam Name:** IINS Implementing Cisco IOS Network Security

**Version:** Demo

# 100% Money Back Guarantee

## QUESTION NO: 1

Which of these is the strongest symmetrical encryption algorithm?

- A. DES
- B. 3DES
- C. AES
- D. RSA
- E. SHA
- F. Diffie-Hellman

**Answer: C**

## QUESTION NO: 2

Which protocol will use a LUN as a way to differentiate the individual disk drives that comprise a target device?

- A. SCSI
- B. HBA
- C. ATA
- D. iSCSI

**Answer: A**


## QUESTION NO: 3

The information of Cisco Router and Security Device Manager(SDM) is shown below:

File Edit View Tools Help

Home Configure Monitor Refresh Save Search Help

**About Your Router** Host Name: R1



**Cisco 2811**

Hardware	More...	Software	More...
<b>Model Type:</b>	Cisco 2811	<b>IOS Version:</b>	12.4(24)T3
<b>Available / Total Memory(MB):</b>	71/256 MB	<b>SDM Version:</b>	2.5
<b>Total Flash Capacity:</b>	61 MB		

Feature Availability: IP ✔ Firewall ✔ VPN ✔ IPS ✔ NAC ✔

**Configuration Overview** View Running Config

**Interfaces and Connections** Up (3) Down (10)

<b>Total Supported LAN:</b>	2	<b>Total Supported WAN:</b>	6
<b>Configured LAN Interface:</b>	2	<b>Total WAN Connections:</b>	0
<b>DHCP Server:</b>	Not Configured		

**Firewall Policies** Active

Zone Pair's	Source Zone	Destination Zone	Policy Name
sdm-zp-gre-out	gre-zone	out-zone	sdm-permit-gre
sdm-zp-out-self	out-zone	self	sdm-permit
sdm-zp-in-out	in-zone	out-zone	sdm-inspect

**VPN** Up (0)

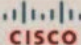
<b>IPSec (Site-to-Site):</b>	0	<b>GRE over IPSec:</b>	1
<b>Xauth Login Required:</b>	0	<b>Easy VPN Remote:</b>	0
<b>No. of DMVPN Clients:</b>	0	<b>No. of Active VPN Clients:</b>	0

**Routing** Up (0)

<b>No. of Static Route:</b>	2	<b>Total Active Signatures:</b>	558
<b>Dynamic Routing Protocols:</b>	EIGRP	<b>No. of IPS-enabled Interfaces:</b>	2
		<b>Signature Version:</b>	

File Edit View Tools Help

Home Configure Monitor Refresh Save Search Help



**Tasks** **Additional Tasks**

- Router Properties
- Router Access
- Secure Device Provisioning
- DHCP
- DNS
- Dynamic DNS Methods
- ACL Editor
- Port to Application Mappings
- Zone Pairs
- Zones**
- AAA
- Local Pools
- Router Provisioning
- 802.1x
- C3PL
- Configuration Management

Add... Edit... Delete

Zone	Name	Associated Interfaces	Associated Zone Pairs
	Inbound		
	gre-zone		sdm-zp-out-gre, sdm-zp-in-gre1, sdm-zp-gre-out, sdm-
	Outbound		
	out-zone	FastEthernet0/1	sdm-zp-self-out, sdm-zp-out-gre, sdm-zp-VPNOutside*
	in-zone	FastEthernet0/0	sdm-zp-in-gre1, sdm-zp-VPNOutsideToInside-1, sdm-

File Edit View Tools Help

Home Configure Monitor Refresh Save Search Help

CISCO

**Tasks** **Additional Tasks**

- Router Properties
- Router Access
- Secure Device Provisioning
- DHCP
- DNS
- Dynamic DNS Methods
- ACL Editor
- Port to Application Mappings
- Zone Pairs
- Zones
- AAA
- Local Pools
- Router Provisioning
- 802.1x
- C3PL
- Policy Map
  - QoS Policy Map
  - Protocol Inspection
  - Application Inspection
    - HTTP
    - IM
    - P2P
    - SMTP
    - RPC
    - IMAP
    - POP3
  - Class Map
    - QoS Class Map
    - Inspection
    - Deep Packet Inspection
      - HTTP
      - IM
      - P2P
      - SMTP
      - RPC
      - IMAP
      - POP3
  - Parameter Map
  - Configuration Management

**Inspect Class Maps** Add... Edit... Delete

Class Map Name	Used By
sdm-protocol-p2p	sdm-inspect
SDM_SSH	
SDM_VPN_TRAFFIC	
sdm-clis-icmp-access	
SDM_IP	sdm-permit-ip
SDM_GRE	sdm-permit-gre
SDM_ESP	
SDM-Voice-permit	sdm-inspect
sdm-clis-protocol-p2p	

Details of Class Map: sdm-clis-icmp-access

Item Name	Item Value
Match Protocol	icmp
Match Protocol	tcp
Match Protocol	udp
Match Protocol	https
Match Protocol	smtp
Match Protocol	pop3
Match Protocol	dns
Match Protocol	sql-net
Match Protocol	ftp
Match Protocol	shell
Match Protocol	h323
Match Protocol	cuseeme
Match Protocol	http
Match Protocol	imap
Match Protocol	ntp
Match Protocol	bootpc
Match Protocol	ms-sql
Match Protocol	ms-sql-m
Match Protocol	netbios-ssn
Match Protocol	netbios-dgm

Configuration delivered to router.

File Edit View Tools Help

Home Configure Monitor Refresh Save Search Help

CISCO

**Tasks** **Additional Tasks**

- Router Properties
- Router Access
- Secure Device Provisioning
- DHCP
- DNS
- Dynamic DNS Methods
- ACL Editor
- Port to Application Mappings
- Zone Pairs
- Zones
- AAA
- Local Pools
- Router Provisioning
- 802.1x
- C3PL
- Policy Map
  - QoS Policy Map
  - Protocol Inspection
  - Application Inspection
    - HTTP
    - IM
    - P2P
    - SMTP
    - RPC
    - IMAP
    - POP3
  - Class Map
    - QoS Class Map
    - Inspection
    - Deep Packet Inspection
      - HTTP
      - IM
      - P2P
      - SMTP
      - RPC
      - IMAP
      - POP3
  - Parameter Map
  - Configuration Management

**Protocol Inspection Policy Maps** Add... Edit... Delete

Policy Map Name	Description
sdm-permit-dmzservice	
sdm-permit-icmpreply	
sdm-permit	
sdm-inspect	

Details of Policy Map: sdm-permit

Match Class Name	Action
SDM_CA_SERVER	Pass
class-default	Drop

File Edit View Tools Help

Home Configure Monitor Refresh Save Search Help

**Tasks** **Additional Tasks**

- Router Properties
- Router Access
- Secure Device Provisioning
- DHCP
- DNS
- Dynamic DNS Methods
- ACL Editor
- Port to Application Mappings
- Zone Pairs
- Zones
- AAA
- Local Pools
- Router Provisioning
- 802.1x
- C3PL
- Policy Map
- QoS Policy Map
- Protocol Inspection
- Application Inspection
- Class Map
- QoS Class Map
- Inspection
- Deep Packet Inspection
- Parameter Map
- Configuration Management

**Protocol Inspection Policy Maps** Add... Edit... Delete

Policy Map Name	Description
sdm-permit-dmzservice	
sdm-permit-icmpreply	
sdm-permit	
sdm-inspect	

Details of Policy Map: sdm-permit

Match Class Name	Action
SDM_CA_SERVER	Pass
class-default	Drop

File Edit View Tools Help

Home Configure Monitor Refresh Save Search Help

**Tasks** **Additional Tasks**

- Router Properties
- Router Access
- Secure Device Provisioning
- DHCP
- DNS
- Dynamic DNS Methods
- ACL Editor
- Port to Application Mappings
- Zone Pairs
- Zones
- AAA
- Local Pools
- Router Provisioning
- 802.1x
- C3PL
- Policy Map
- QoS Policy Map
- Protocol Inspection
- Application Inspection
- Class Map
- QoS Class Map
- Inspection
- Deep Packet Inspection
- Parameter Map
- Configuration Management

**Inspect Class Maps** Add... Edit... Delete

Class Map Name	Used By
sdm-clis-insp-traffic	
sdm-protocol-http	sdm-inspect
sdm-icmp-access	sdm-permit-icmpreply
SDM_CA_SERVER	sdm-permit
sdm-invalid-src	sdm-inspect
sdm-insp-traffic	sdm-inspect
sdm-dmz-traffic	sdm-permit-dmzservice
sdm-protocol-pop3	sdm-inspect

Details of Class Map: sdm-invalid-src

Item Name	Item Value
Match ACL	100

File Edit View Tools Help

Home Configure Monitor Refresh Save Search Help

**Tasks** Firewall

Create Firewall Edit Firewall Policy

Add Edit Delete Move Up Move Down Cut Copy Paste Rule Diagram

Traffic Classification				Action	Rule Options
ID	Source	Destination	Service		
sdm-permit-icmpreply (self to out-zone)					
1	any	any	icmp tcp udp	Permit Firewall	
2	Unmatched Traffic				Permit ACL
sdm-permit-dmzservice (out-zone to dmz-zone, in-zone to dmz-zone)					
1	any	192.168.1.100	http	Permit Firewall	
2	Unmatched Traffic				Drop
sdm-permit (out-zone to self)					
1	class-Map: SDM_CA_SERVER			Permit ACL	
2	Unmatched Traffic				Drop
sdm-inspect (in-zone to out-zone)					
1	100		any	Drop	Log
	<ul style="list-style-type: none"> <li>255.255.255.255 -&gt; any</li> <li>127.0.0.0/0.0.255.255 -&gt; any</li> <li>10.1.2.0/0.0.0.255 -&gt; any</li> <li>192.168.1.0/0.0.0.255 -&gt; any</li> </ul>				
2	any	any	http	Permit Firewall	
3	any	any	smtp	Permit Firewall	HTTP Application I...
4	any	any	imap	Permit Firewall	SMTP Application I...
5	any	any	pop3	Permit Firewall	IMAP Application I...
6	any	any	sdm-cl-protocol-p2p	Drop	POP3 Application I... Log

Apply Changes Discard Changes

File Edit View Tools Help

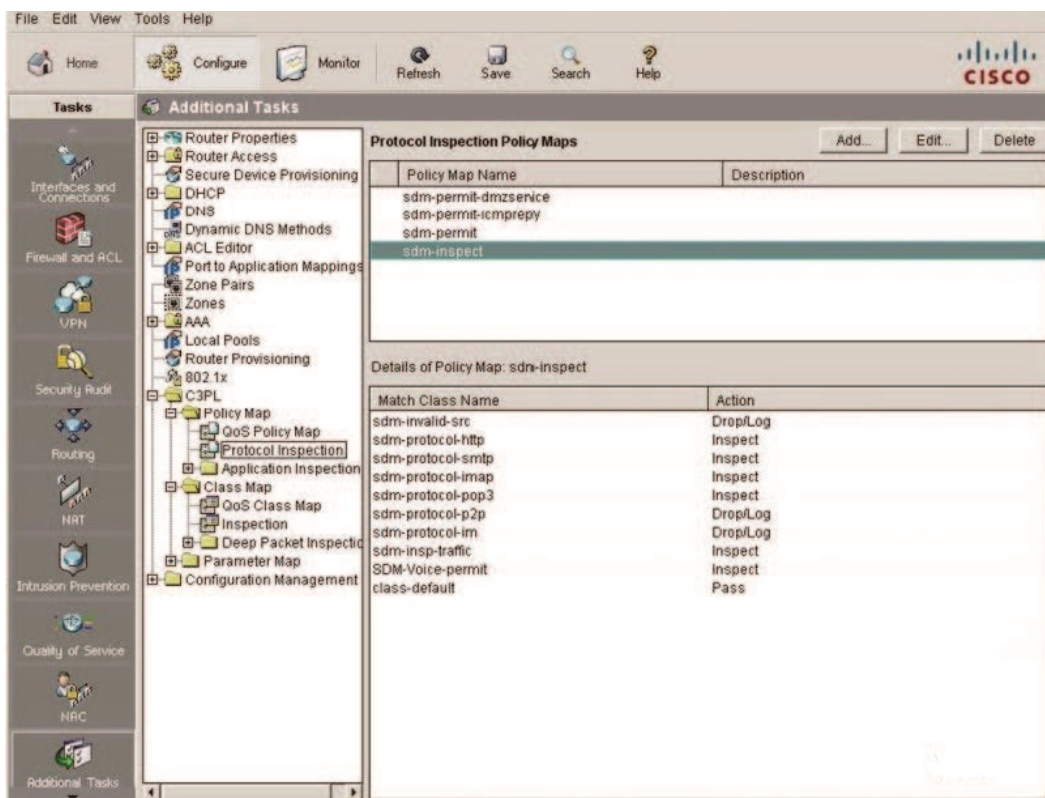
Home Configure Monitor Refresh Save Search Help

**Tasks** Additional Tasks

Router Properties Router Access Secure Device Provisioning DHCP DNS Dynamic DNS Methods ACL Editor Port to Application Mappings Zone Pairs Zones AAA Local Pools Router Provisioning 802.1x C3PL Policy Map QoS Policy Map Protocol Inspection Application Inspection Class Map QoS Class Map Inspecton Deep Packet Inspecton Parameter Map Configuration Management

Zone Pairs Add Edit Delete

Zone Pair	Source	Destination	Policy
sdm-zp-self-out	self	out-zone	sdm-permit-icmprep
sdm-zp-out-dmz	out-zone	dmz-zone	sdm-permit-dmzserv
sdm-zp-out-self	out-zone	self	sdm-permit
sdm-zp-in-dmz	in-zone	dmz-zone	sdm-permit-dmzserv
sdm-zp-in-out	in-zone	out-zone	sdm-inspect



Which three protocols are matched by the "sdm-cls-insp-traffic" class map? (Choose three)

- A. pop3
- B. ftp
- C. 12tp
- D. sql-net

**Answer: A,B,D**

#### QUESTION NO: 4

Which statement best describes the Turbo ACL feature? (Choose all that apply.)

- A. The Turbo ACL feature processes ACLs into lookup tables for greater efficiency.
- B. The Turbo ACL feature leads to increased latency, because the time it takes to match the packet is variable.
- C. The Turbo ACL feature leads to reduced latency, because the time it takes to match the packet is fixed and consistent.
- D. Turbo ACLs increase the CPU load by matching the packet to a predetermined list.

**Answer: A,C**

#### QUESTION NO: 5

What is the objective of the aaa authentication login console-in local command?

- A. It specifies the login authentication method list named console-in using the local user database on the router.
- B. It specifies the login authorization method list named console-in using the local RADIUS username-password database.
- C. It specifies the login authentication list named console-in using the local username- password database on the router.
- D. It specifies the login authorization method list named console-in using the local username- password database on the router.

**Answer: A**

#### **QUESTION NO: 6**

Stream ciphers run on which of the following?

- A. Fixed-length groups of digits called blocks
- B. Individual blocks, one at a time, with the transformations varying during the encryption
- C. Individual digits, one at a time, with the transformations varying during the encryption
- D. Fixed-length groups of bits called blocks

**Answer: C**

#### **QUESTION NO: 7**

When port security is enabled on a Cisco Catalyst switch, what is the default action when the configured maximum of allowed MAC addresses value is exceeded?

- A. The port's violation mode is set to restrict.
- B. The port is shut down.
- C. The MAC address table is cleared and the new MAC address is entered into the table.
- D. The port remains enabled, but bandwidth is throttled until old MAC addresses are aged out.

**Answer: B**

#### **QUESTION NO: 8**

Which statement about Cisco IOS IPS on Cisco IOS Release 12.4(11)T and later is true?

- A. uses Cisco IPS 5.x signature format



- B. requires the Basic or Advanced Signature Definition File
- C. supports both inline and promiscuous mode
- D. requires IEV for monitoring Cisco IPS alerts
- E. uses the built-in signatures that come with the Cisco IOS image as backup
- F. supports SDEE, SYSLOG, and SNMP for sending Cisco IPS alerts

**Answer: A**

#### **QUESTION NO: 9**

Regarding constructing a good encryption algorithm, what does creating an avalanche effect indicate?

- A. Altering the key length causes the ciphertext to be completely different.
- B. Changing only a few bits of ciphertext message causes the plain text to be completely different.
- C. Altering the key length causes the plain text to be completely different.
- D. Changing only a few bits of a plain-text message causes the ciphertext to be completely different.

**Answer: D**

#### **QUESTION NO: 10**

You have configured a standard access control list on a router and applied it to interface Serial 0 in an outbound direction. No ACL is applied to Interface Serial 1 on the same router. What happens when traffic being filtered by the access list does not match the configured ACL statements for Serial 0?

- A. The traffic is dropped.
- B. The resulting action is determined by the destination IP address.
- C. The source IP address is checked, and, if a match is not found, traffic is routed out interface Serial 1.
- D. The resulting action is determined by the destination IP address and port number.

**Answer: A**

#### **QUESTION NO: 11**

What will be disabled as a result of the no service password-recovery command?

- A. changes to theconfig-register setting
- B. ROMMON
- C. password encryption service
- D. aaa new-model global configuration command
- E. thexmodem privilege EXEC mode command to recover the Cisco IOS image

**Answer: B**

**100%** Money Back  
**Guarantee**

To Read the [Whole Q&As](#), please purchase the [Complete Version](#) from [Our website](#).

# Trying our product !



- ★ **100%** Guaranteed Success
- ★ **100%** Money Back Guarantee
- ★ **365 Days** Free Update
- ★ **Instant Download** After Purchase
- ★ **24x7** Customer Support
- ★ Average **99.9%** Success Rate
- ★ More than **69,000** Satisfied Customers Worldwide
- ★ Multi-Platform capabilities - **Windows, Mac, Android, iPhone, iPod, iPad, Kindle**

## Need Help

Please provide as much detail as possible so we can best assist you.

To update a previously submitted ticket:



 <b>One Year Free Update</b> <p>Free update is available within One Year after your purchase. After One Year, you will get 50% discounts for updating. And we are proud to boast a 24/7 efficient Customer Support system via Email.</p>	 <b>Money Back Guarantee</b> <p>To ensure that you are spending on quality products, we provide 100% money back guarantee for 30 days from the date of purchase.</p>	 <b>Security &amp; Privacy</b> <p>We respect customer privacy. We use McAfee's security service to provide you with utmost security for your personal information &amp; peace of mind.</p>
---	---	--

[Guarantee & Policy](#) | [Privacy & Policy](#) | [Terms & Conditions](#)

Any charges made through this site will appear as Global Simulators Limited.

All trademarks are the property of their respective owners.

Copyright © 2004-2015, All Rights Reserved.