



# 600-660<sup>Q&As</sup>

Implementing Cisco Application Centric Infrastructure - Advanced

## Pass Cisco 600-660 Exam with 100% Guarantee

Free Download Real Questions & Answers **PDF** and **VCE** file from:

<https://www.passapply.com/600-660.html>

100% Passing Guarantee  
100% Money Back Assurance

Following Questions and Answers are all new published by Cisco  
Official Exam Center

-  **Instant Download** After Purchase
-  **100% Money Back** Guarantee
-  **365 Days** Free Update
-  **800,000+** Satisfied Customers





### QUESTION 1

What are two characteristics of network-centric design in Cisco ACI? (Choose two.)

- A. There is open communication between EPGs
- B. EPGs are used for microsegmentation
- C. EPGs are different security zones
- D. Applications define the network requirements
- E. A bridge domain has one subnet and one EPG

Correct Answer: BE

---

### QUESTION 2

What is a design implication for Cisco ACI using an application-centric approach?

- A. Multiple VLANs and/or multiple EPGs are under one bridge domain
- B. VLAN numbers are in the names of the bridge domain and EPG objects
- C. One EPG is mapped to multiple bridge domains
- D. One VLAN equals one EPG equals one bridge domain

Correct Answer: C

---

### QUESTION 3



### Create L4-L7 Devices

STEP 1 > Cluster

1. Cluster 2. Devices 3. Parameters

Name:

Device Package:

Context Aware:  Multiple  Single

Function Type:  GoThrough  GoTo  L1  L2

Device Type:  CLOUD  PHYSICAL  VIRTUAL

Cluster Management Interface

EPG:

Virtual IP Address:

Port:

Username:

Password:

Confirm Password:

Refer to the exhibit. A network engineer configures a Layer 4 to Layer 7 device for an outside routed firewall that is connected to POD-1 inside a Cisco ACI fabric that consists of two pods. All traffic from POD-1 or POD-2 that uses the L3Out should pass through the routed firewall. Which Function Type must be implemented in the service graph for POD-2 to use L3Out?

- A. GoThrough
- B. L1
- C. GoTo
- D. L2

Correct Answer: D

#### QUESTION 4

What is the purpose of the Forwarding Tag (FTAG) in Cisco ACI?

- A. FTAG is used in Cisco ACI to add a label to the iVXLAN traffic in the fabric to apply the correct policy.
- B. FTAG is used in Cisco ACI to add a label to the VXLAN traffic in the fabric to apply the correct policy.

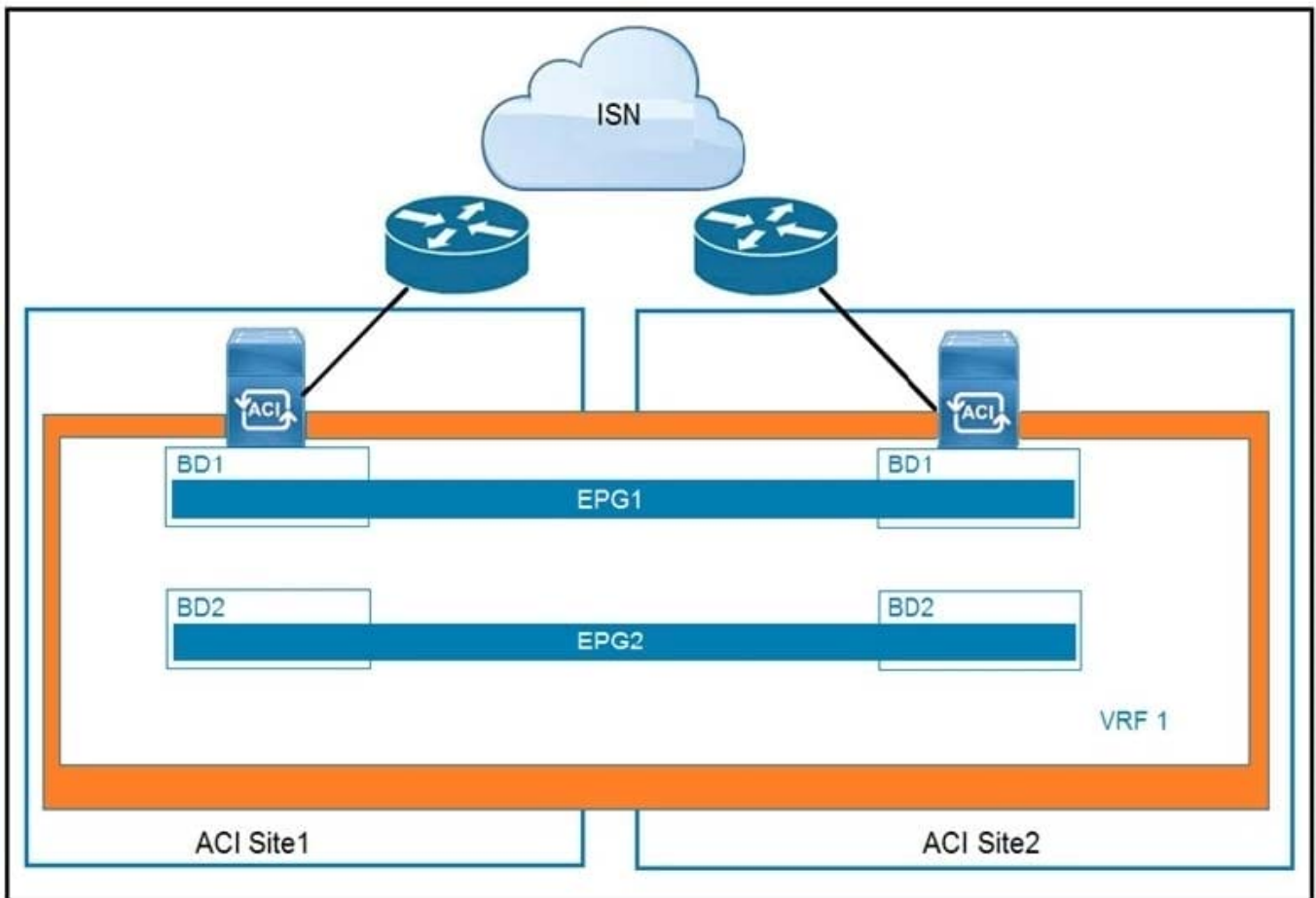


- C. FTAG trees in Cisco ACI are used to load balance unicast traffic.
- D. FTAG trees in Cisco ACI are used to load balance multi-destination traffic.

Correct Answer: D

Reference: [https://www.cisco.com/c/en/us/td/docs/switches/datacenter/aci/apic/sw/1-x/aci-fundamentals/b\\_ACI-Fundamentals/b\\_ACI-Fundamentals\\_chapter\\_010010.html#concept\\_1E8BF286E1C043EF839D80935FDF9F50](https://www.cisco.com/c/en/us/td/docs/switches/datacenter/aci/apic/sw/1-x/aci-fundamentals/b_ACI-Fundamentals/b_ACI-Fundamentals_chapter_010010.html#concept_1E8BF286E1C043EF839D80935FDF9F50)

### QUESTION 5



Refer to the exhibit. Which feature is available across sites if EPGs are stretched?

- A. active-active high-availability firewall clustering
- B. Layer 3 routing between sites
- C. Layer 2 flooding across sites
- D. live virtual machine migration

Correct Answer: B

Reference: [https://www.cisco.com/c/en/us/td/docs/switches/datacenter/aci/aci\\_multi-](https://www.cisco.com/c/en/us/td/docs/switches/datacenter/aci/aci_multi-)



site/sw/1x/fundamentals/b\_Cisco\_ACI\_Multi-Site\_Fundamentals/b\_ACI\_Multi-Zone\_Fundamentals\_chapter\_01.pdf (6)

---

#### QUESTION 6

What is a characteristic of a stretched bridge domain solution between Cisco ACI sites with Layer 2 flood disabled?

- A. The application profile that is associated to the bridge domain have local significance in each site.
- B. The tenant and VRF that associated to the bridge domain have local significance in each site.
- C. Headend replication is used for BUM traffic between sites.
- D. IP mobility is ensured between sites for disaster recovery.

Correct Answer: B

---

#### QUESTION 7

An engineer creates the objects that must be deployed at each site in Cisco ACI Multi-Site Orchestrator. Which action should be taken before the schema can be associated with the newly configured site?

- A. Attach the templates to the newly configured site
- B. Configure a provider for the Cisco ACI Multi-Site Orchestrator
- C. Import existing policies from an existing tenant to Cisco ACI Multi-Site Orchestrator
- D. Configure the Infra Site-Specific Settings

Correct Answer: A

---

#### QUESTION 8

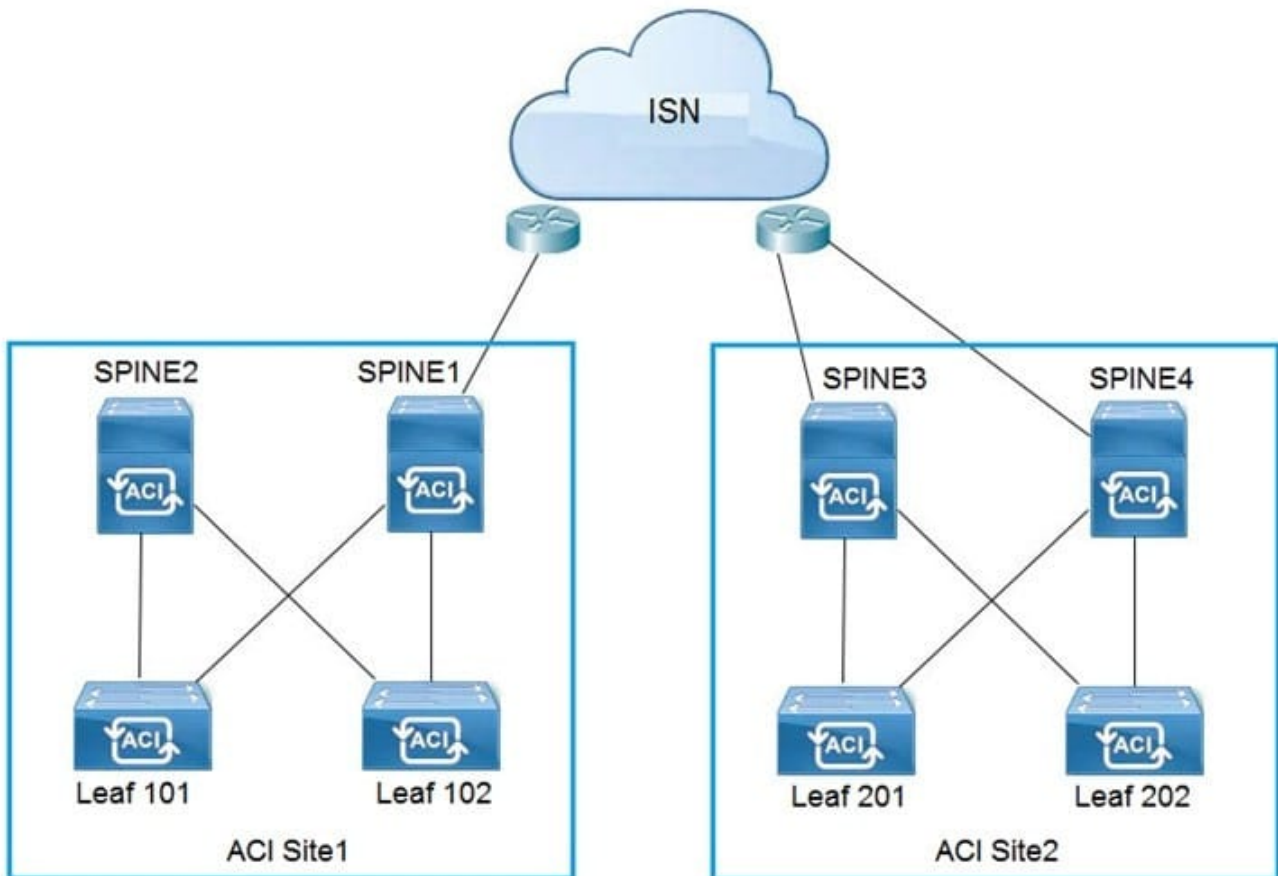
Cisco ACI fabric is migrated from network-centric mode to application-centric mode. What is possible in an application-centric design?

- A. remapping of VLAN pools
- B. migration of bare metal servers to virtual machines
- C. creation of additional EPGs under one bridge domain
- D. Cisco ACI VMM integration with hypervisors

Correct Answer: C

---

#### QUESTION 9

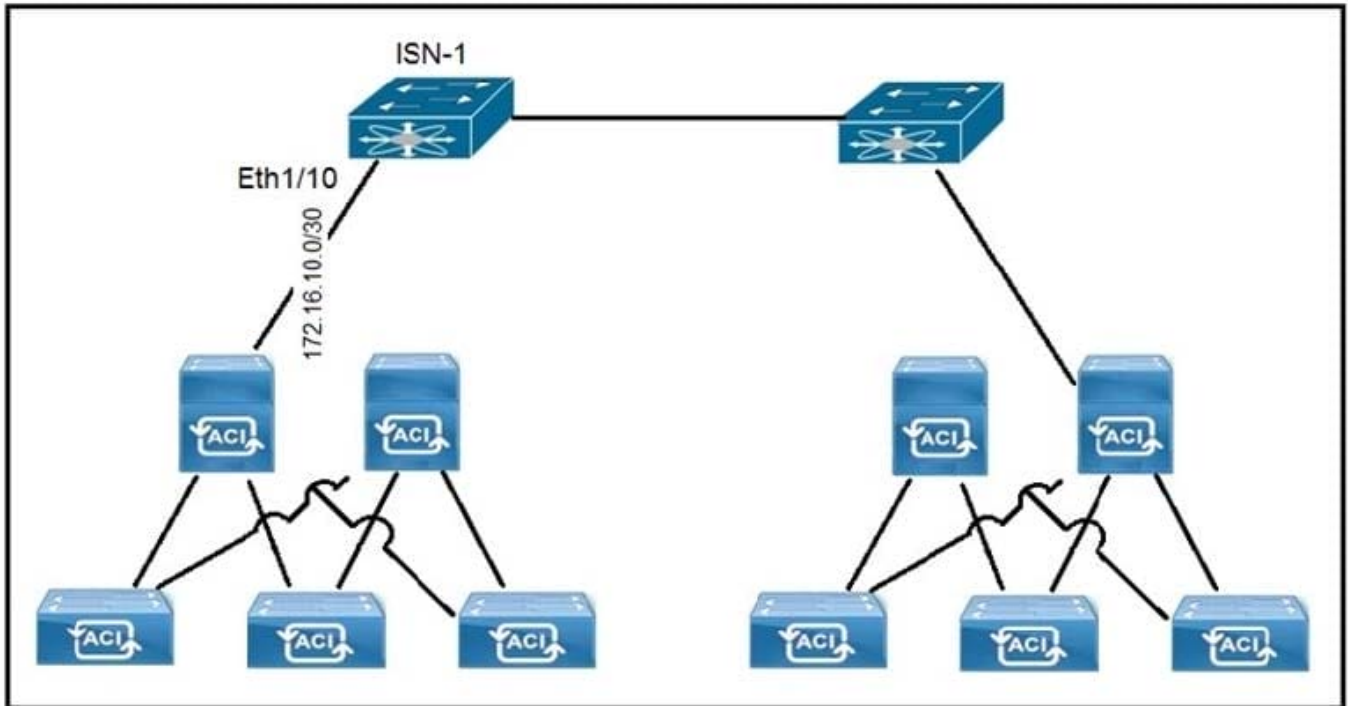


Refer to the exhibit. Which two configuration steps are required in ISN for Cisco ACI Multi-Site setup? (Choose two.)

- A. Connect Spine2 to ISN routers.
- B. Configure BIDIR-PIM throughout the ISN
- C. Increase ISN MTU to support the maximum MTU that is sent by endpoints
- D. Configure OSPF between spines and ISN routers
- E. Enable IGMPv3 on ISN routers

Correct Answer: DE

#### QUESTION 10



Refer to the exhibit. A customer implements Cisco ACI Multi-Site with default MTU settings between two sites. Which configuration should be applied on the interface Eth1/10 on the ISN-1 device?

- A.
- B.
- C.
- D.

Correct Answer: A

[600-660 VCE Dumps](#)

[600-660 Practice Test](#)

[600-660 Study Guide](#)