



4A0-108^{Q&As}

Alcatel-Lucent Multicast Protocols

Pass Alcatel-Lucent 4A0-108 Exam with 100% Guarantee

Free Download Real Questions & Answers **PDF** and **VCE** file from:

<https://www.passapply.com/4A0-108.html>

100% Passing Guarantee
100% Money Back Assurance

Following Questions and Answers are all new published by Alcatel-Lucent Official Exam Center

- ⚙ **Instant Download** After Purchase
- ⚙ **100% Money Back** Guarantee
- ⚙ **365 Days** Free Update
- ⚙ **800,000+** Satisfied Customers





QUESTION 1

Which of the following are characteristics of the one to many model of multicast data delivery? (Choose two)

- A. Receivers are generally unknown by the source
- B. Receivers are generally known by each other
- C. Well suited for applications in which the receivers provide feedback to each other and the source
- D. There is a single data flow for each group on the source segment
- E. All devices are potentially capable of generating multicast data
- F. Well suited for applications such as video on demand where each source sends a separate data stream to each of the many different receivers

Correct Answer: AD

QUESTION 2

What is the destination address for MLDv2 general query?

- A. FF02::1
- B. FF02::2
- C. FF02::16
- D. The multicast group address which the router assumes its hosts might have interest in.

Correct Answer: A

QUESTION 3

Which of the following about BGP Auto Discovery in an MVPN is TRUE?

- A. If BGP Auto Discovery is used, MPLS LSPs must be used for the P-tunnels in the MVPN.
- B. PIM state is maintained between PEs in the MVPN without PIM Hello messages.
- C. MP-BGP keepalive messages are used to maintain adjacencies between the PEs in an MVPN.
- D. MP-BGP can also be used as the multicast signaling protocol between the PEs and CEs.

Correct Answer: B

QUESTION 4



What is the position of the router shown in the exhibit?

```
A:RouterA# show router pim group type sg detail
=====
PIM Source Group ipv4
=====
Group Address      : 239.13.13.13
Source Address     : 192.168.100.99
RP Address         : 10.10.10.10
Flags              : spt, rpt-prn-des   Type      : (S,G)
MRIB Next Hop      : 10.1.2.1
MRIB Src Flags     : remote              Keepalive Timer Exp: 0d 00:02:34
Up Time            : 0d 00:00:55         Resolved By       : rtable-u

Up JP State        : Joined              Up JP Expiry       : 0d 00:00:04
Up JP Rpt          : Pruned              Up JP Rpt Override : 0d 00:00:00

Register State     : No Info

Rpf Neighbor       : 10.1.2.1
Incoming Intf      : Int-1
Outgoing Intf List : Int-2

Curr Fwding Rate   : 1047.2 kbps
Forwarded Packets  : 4345                 Discarded Packets  : 0
Forwarded Octets   : 5877916              RPF Mismatches     : 0
Spt threshold      : 0 kbps                ECMP opt threshold : 7
Admin ba
```

Clearer pictures and no water-mask in the Full Product

- A. The RP
- B. The first hop router from the source
- C. The router where the Source and Shared Path Trees diverge
- D. An upstream router from the diverging router on the Shared Path Tree

Correct Answer: C

QUESTION 5

Which of the following pairs correctly completes the sentence below? When Draft Rosen is deployed, PEs exchange CEs\'\' unicast routing information via _____ and exchange CEs\'\' multicast group information via _____.

- A. MP-BGP, PIM
- B. MP-BGP, MP-BGP
- C. mLDP, PIM
- D. MP-BGP, mLDP

Correct Answer: A



QUESTION 6

Why do RPs configured for anycast RP-set exchange Register messages?

- A. To inform each RP about all of the multicast sources in the domain
- B. There is no need for this. This is purely an optional functionality as described in the anycast RP draft
- C. To inform each RP about all of the multicast enabled receivers
- D. To facilitate the anycast RP election process
- E. None of the above

Correct Answer: B

QUESTION 7

What impact will an asymmetric IGP routing topology have on the PIM RPF check?

- A. The PIM RPF check may fail since traffic from the source may arrive on one interface while the IP route to the source may point to another interface on the PIM router
- B. PIM does not work in an asymmetric topology and therefore the RPF check will not be done
- C. There will be no impact since the shared and source path trees are built from the receiver to the source
- D. There is not enough information provided to answer the question

Correct Answer: C

QUESTION 8

After the switchover from Shared Path Tree to Source Path Tree, does a branch of the Shared Path Tree still exist between the diverging router (router where the Shared and Source Path Tree diverge) and the RP?

- A. Yes, it exists until the source stops sending multicast traffic.
- B. Yes, it exists until there is no receiver beyond the diverging router.
- C. No. After switchover, only the Source Path Tree remains.
- D. No. After switchover, only the Shared Path Tree remains between the source and RP.

Correct Answer: B

QUESTION 9

Which statement best describes the impact of an RP failure in a PIM ASM network?

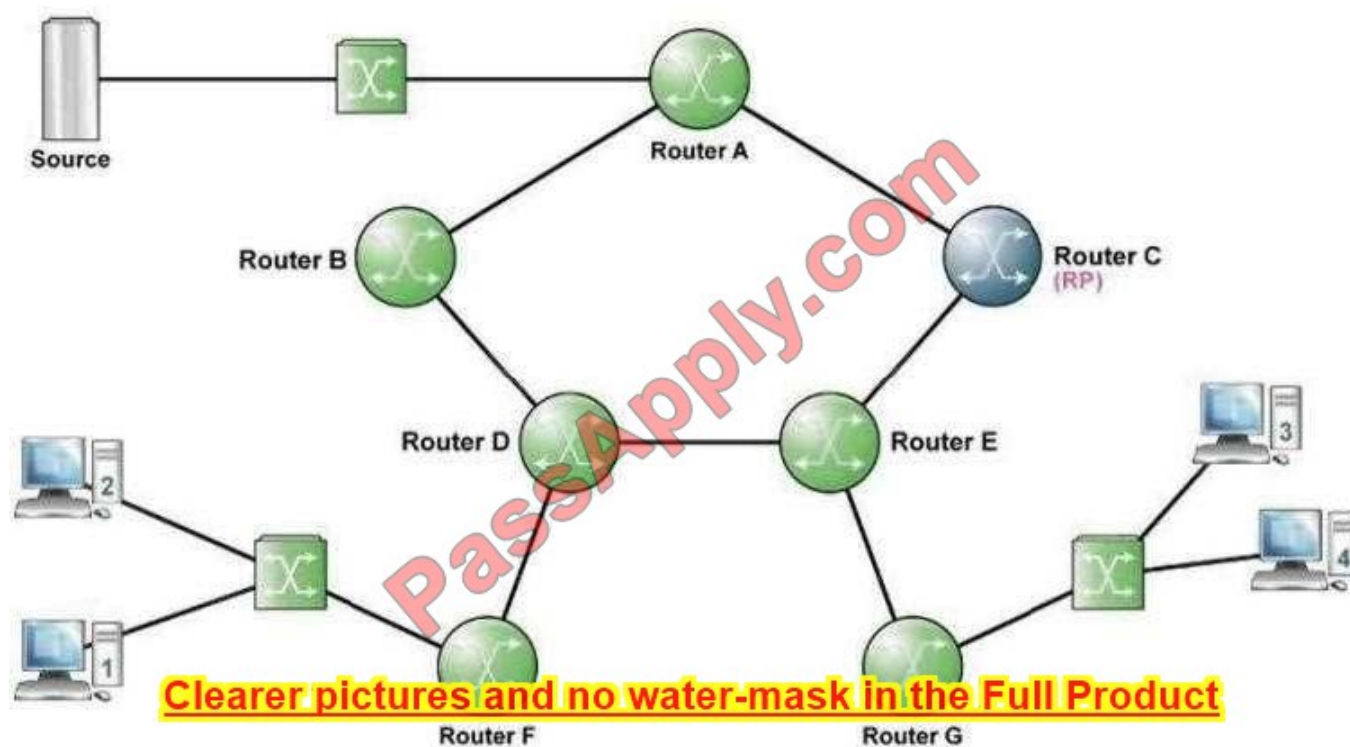


- A. All the existing multicast traffic will be stopped immediately as PIM ASM network must have an RP in order to transmit all the multicast traffic
- B. The multicast traffic will be impacted, but not immediately. Multicast routers will not discover the RP failure until the timer expires and the multicast traffic flow will be stopped.
- C. No impact at all as RP is not required in a PIM ASM network
- D. The traffic will not be impacted if the multicast traffic flows have already been established and the traffic flow does not involve the RP in the path

Correct Answer: D

QUESTION 10

Refer to the following exhibit.



Assume all links have an equal metric in the IGP. Receiver 2 and Receiver 3 have joined the multicast group and the source is not sending. Where will the Shared Path Tree have been created? (Choose two)

- A. Router G-E-C
- B. Router F-D-E-G
- C. Router F-D-E-C
- D. Router C-A
- E. Router F-D-B-A



F. Router G-E-C- A

G. No Shared Path Tree will have been created

Correct Answer: AC

QUESTION 11

Which of the following about Draft Rosen MVPN is TRUE?

A. In Draft Rosen MVPN, each CE maintains a PIM adjacency to its remote CE routers.

B. In Draft Rosen MVPN, customer multicast group addresses in different VRFs cannot overlap.

C. Draft Rosen MVPN encapsulates customer multicast traffic in GRE tunnels.

D. In Draft Rosen MVPN, PE routers exchange customer multicast routing information by MP-BGP.

Correct Answer: C

QUESTION 12

Which MAC address does the IPv4 multicast address 239.33.42.107 translate to?

A. 01-00-5e-al-2a-6b

B. 01-00-5e-21-2a-6b

C. 01-00-5e-21-2c-6c

D. 00-01-5e-al-2a-6b

E. 00-01-5e-21-2a-6b

F. 00-01-5e-al-2a-6b

Correct Answer: B

QUESTION 13

What is the position of the router shown in the exhibit?



```
A:RouterA# show router pim group type sg detail
=====
PIM Source Group ipv4
=====
Group Address       : 239.13.13.13
Source Address      : 192.168.100.99
RP Address          : 10.10.10.10
Flags               : spt                               Type           : (S,G)
MRIB Next Hop       : 192.168.100.99
MRIB Src Flags       : direct                           Keepalive Timer Exp: 0d 00:00:53
Up Time             : 0d 00:02:38                       Resolved By       : rtable-u

Up JP State          : Joined                           Up JP Expiry       : 0d 00:00:00
Up JP Rpt            : Pruned                           Up JP Rpt Override : 0d 00:00:00

Register State       : Pruned                           Register Stop Exp  : 0d 00:00:04
Reg From Anycast RP: No

Rpf Neighbor         : 192.168.100.99
Incoming Intf        : Int-1
Outgoing Intf List   : Int-2

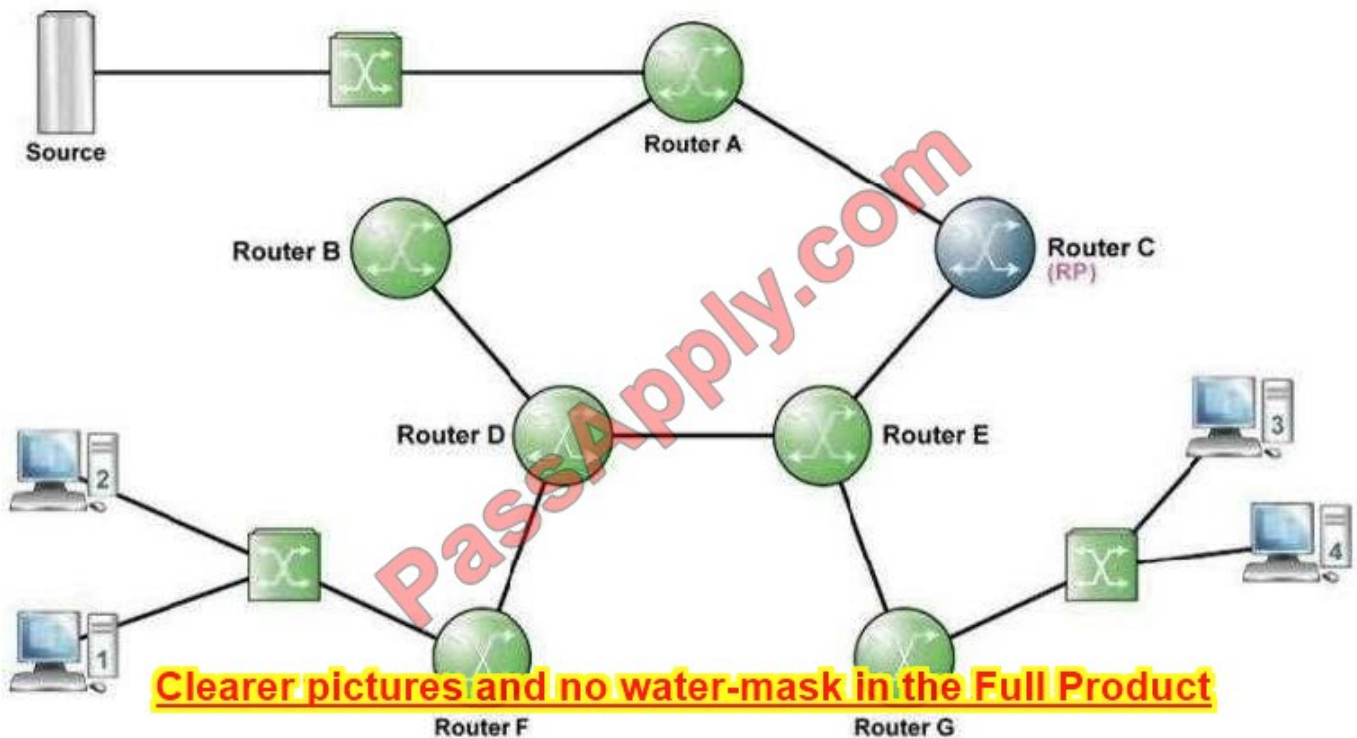
Curr Fwding Rate     : 1030.9 kbps
Forwarded Packets    : 12790                            Discarded Packets  : 0
Forwarded Octets     : 17302792                         RPF Mismatches     : 0
Spt threshold        : 0 kbps                           ECMP opt threshold : 7
Admin bandwidth      : 1 kbps                           Preference         : 0
=====
Groups : Clearer pictures and no water-mask in the Full Product
=====
```

- A. The first hop router from the source
- B. The RP
- C. One router upstream on the Shared Path Tree from the diverging router
- D. The last hop router from the source

Correct Answer: A

QUESTION 14

Refer to the following exhibit.



Assuming all links have an equal metric in the IGP, where will the Source Path Tree have been created if Receiver 2 and Receiver 3 have joined the multicast group but the source is not sending?

- A. Router G-E-C-A
- B. Router F-D-B-A
- C. Router C-A
- D. There won't be a Source Path Tree

Correct Answer: D

QUESTION 15

Which two protocols are used to signal P2MP LSPs?

- A. BGP A-D and RSVP-TE
- B. RSVP-TE and mLDP
- C. mLDPA and PIM
- D. mLDP and BGP A-D

Correct Answer: B



To Read the [Whole Q&As](#), please purchase the [Complete Version](#) from [Our website](#).

Try our product !

100% Guaranteed Success
100% Money Back Guarantee
365 Days Free Update
Instant Download After Purchase
24x7 Customer Support
Average 99.9% Success Rate
More than 800,000 Satisfied Customers Worldwide
Multi-Platform capabilities - [Windows](#), [Mac](#), [Android](#), [iPhone](#), [iPod](#), [iPad](#), [Kindle](#)

We provide exam PDF and VCE of Cisco, Microsoft, IBM, CompTIA, Oracle and other IT Certifications.
You can view Vendor list of All Certification Exams offered:

<https://www.passapply.com/allproducts>

Need Help

Please provide as much detail as possible so we can best assist you.
To update a previously submitted ticket:



 One Year Free Update Free update is available within One Year after your purchase. After One Year, you will get 50% discounts for updating. And we are proud to boast a 24/7 efficient Customer Support system via Email.	 Money Back Guarantee To ensure that you are spending on quality products, we provide 100% money back guarantee for 30 days from the date of purchase.	 Security & Privacy We respect customer privacy. We use McAfee's security service to provide you with utmost security for your personal information & peace of mind.
---	---	--

Any charges made through this site will appear as Global Simulators Limited.
All trademarks are the property of their respective owners.
Copyright © passapply, All Rights Reserved.