



# 4A0-106<sup>Q&As</sup>

Alcatel-Lucent Virtual Private Routed Networks

## Pass Alcatel-Lucent 4A0-106 Exam with 100% Guarantee

Free Download Real Questions & Answers **PDF** and **VCE** file from:

<https://www.passapply.com/4a0-106.html>

100% Passing Guarantee  
100% Money Back Assurance

Following Questions and Answers are all new published by Alcatel-Lucent Official Exam Center

-  **Instant Download** After Purchase
-  **100% Money Back** Guarantee
-  **365 Days** Free Update
-  **800,000+** Satisfied Customers





### QUESTION 1

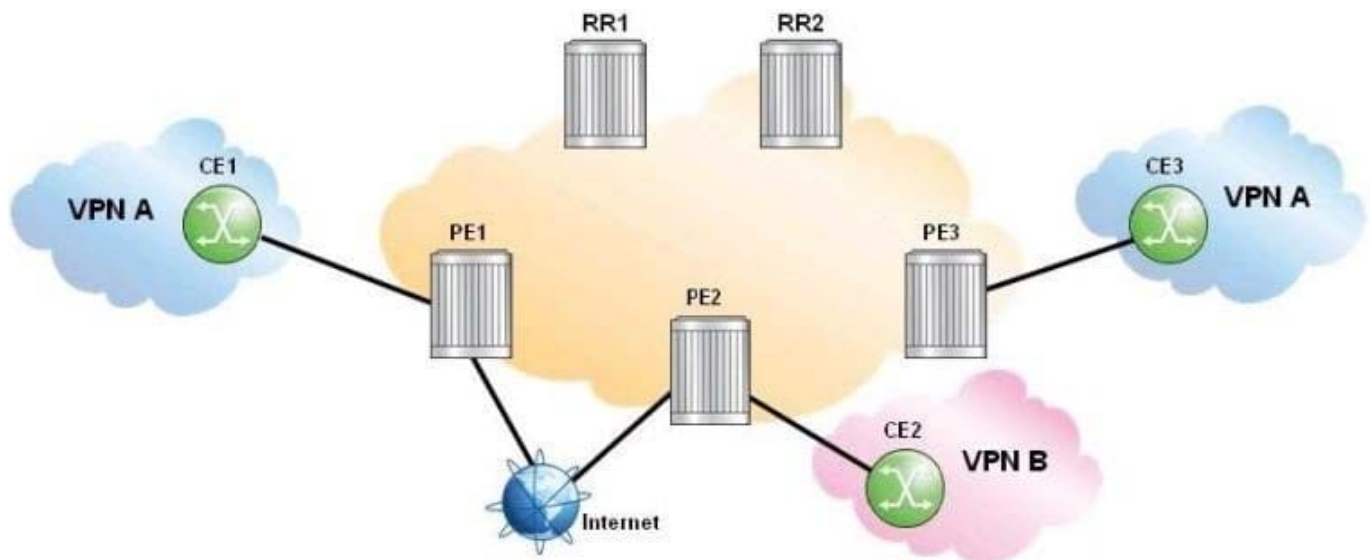
What operation is performed by a P device on the label signaled by MP-BGP when it receives a labeled packet for a VPRN service?

- A. It will label switch the packet based on this label
- B. It will decrement the TTL and label switch the packet based on this label
- C. It will SWAP the label for a new label and then label switch the packet
- D. The P router does not perform any operation on this label

Correct Answer: D

### QUESTION 2

Click the exhibit.



All sites in the displayed network require Internet access. Route reflector 1(RR1) is used for Internet routes only and route reflector 2(RR2) is used for VPN routes only. Which of the following is FALSE?

- A. BGP sessions between RR1 and PE routers support only the IPv4 address family.
- B. BGP sessions between RR2 and PE routers support only the VPN-IPv4 address family.
- C. RR2 establishes BGP sessions with PE1, PE2 and PE3.
- D. RR1 establishes BGP sessions only with PE1 and PE2.

Correct Answer: D



### QUESTION 3

An advantage of using BGP as the PE-CE protocol is that route policies are no longer required to control the exchange of routes from BGP to MP-BGP.

- A. True
- B. False

Correct Answer: B

---

### QUESTION 4

A CE hub and spoke VPRN has two spoke sites; which of the following would be the best option to implement this topology at the hub site PE?

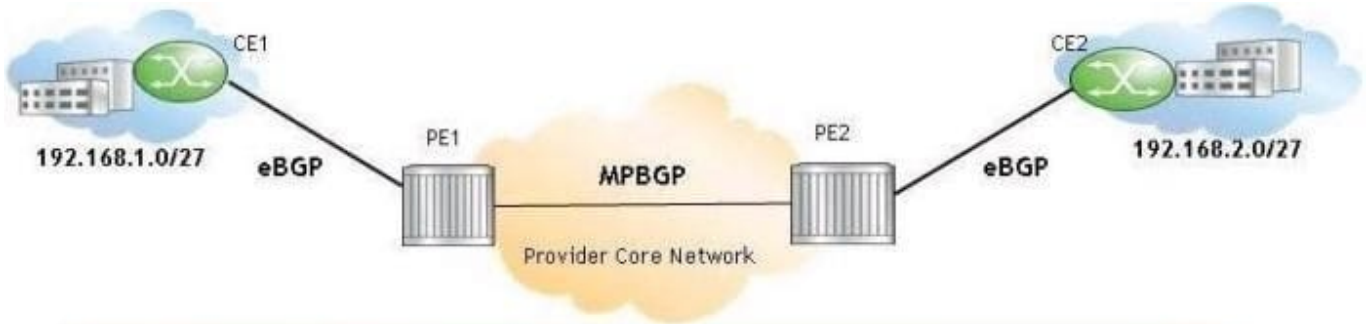
- A. One VPRN, one route distinguisher, and two route targets
- B. Two VPRNs, one route distinguisher, and three route targets
- C. Two VPRNs, two route distinguishers, and three route targets
- D. One VPRN, two route distinguishers, and three route targets

Correct Answer: A

---

### QUESTION 5

Click the exhibit.



```
*A:--# show router bgp routes 192.168.1.0/27 detail
=====
BGP Router ID:-----   AS:-----   Local AS:-----
=====
Legend -
Status codes : u - used, s - suppressed, h - history, d - decayed, * - valid
Origin codes  : i - IGP, e - EGP, ? - incomplete, > - best
=====
BGP IPv4 Routes
=====
Original Attributes
Network       : 192.168.1.0/27
Next-hop     : -----
From         : -----
Res. Next-hop : -----
Local Pref.  : n/a
Aggregator AS : None
Atomic Aggr. : Not Atomic
Community    : target:64496:10
Cluster      : No Cluster Members
Originator Id : None
Peer Router Id : -----
Flags        : Invalid Incomplete AS-Loop
AS-Path      : 64497 64496
```

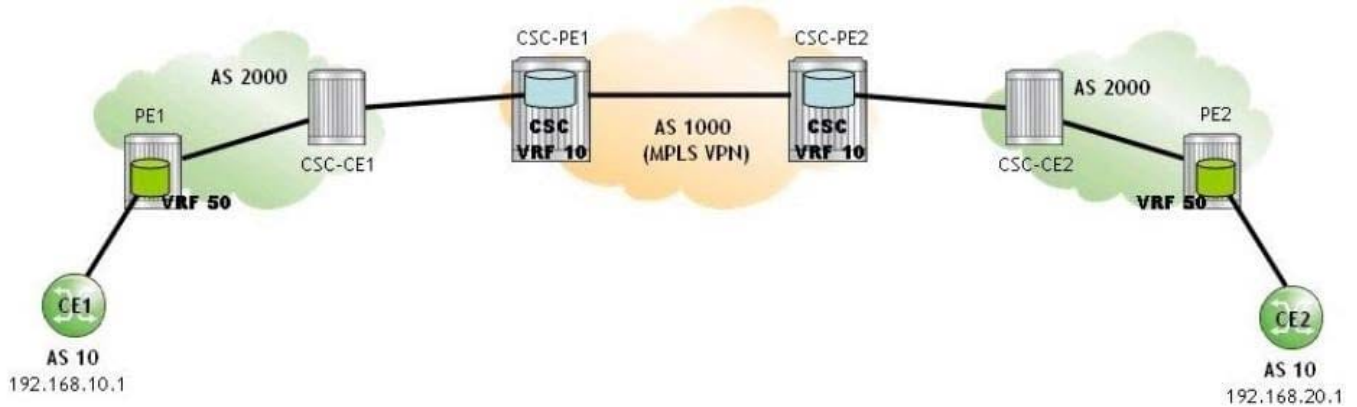
According to the display, a BGP loop is detected for route 192.168.1.0/27. On which router is this command executed?

- A. CE1
- B. CE2
- C. PE1
- D. PE2

Correct Answer: B

### QUESTION 6

Click the exhibit.



A Carrier Supporting Carrier (CSC) VPRN is configured for a customer carrier who is a BGP/MPLS service provider. Which of the following describes the routes present in PE1's global routing table?

- A. The system address of PE2 is present. The system addresses of CSC-PE1 and CSC-PE2 are not present.
- B. The system addresses of PE2, CSC-PE1 and CSC-PE2 are all present.
- C. The system address of CSC-CE1, the route 192.168.10.1, and the route 192.168.20.1 are all present.
- D. The system address of PE2 and the route 192.168.20.1 are present.

Correct Answer: A

### QUESTION 7

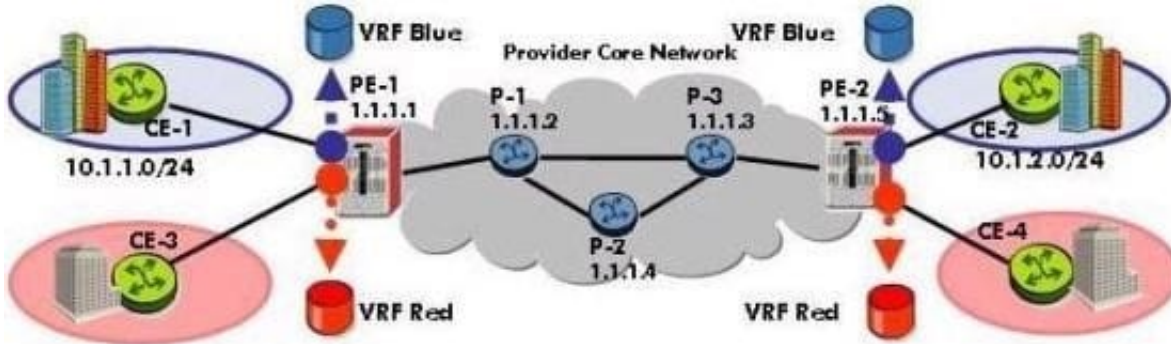
Which of the following about scaling techniques for route reflectors is FALSE?

- A. Logical Partitioning of route reflectors works best when PEs are partitioned to support different VPRNs.
- B. Logical Partitioning of route reflectors is simple and scalable, but requires more hardware.
- C. Filtering at route reflectors requires either inbound filtering at the route reflector or outbound filtering at the PE routers.
- D. Filtering at route reflectors allows the route reflector to filter routes received from PEs and only accept routes with a certain route distinguisher.

Correct Answer: D

### QUESTION 8

Click the exhibit.



```
PE-1# configure router mpls
PE-1>config>router>mpls# no shutdown
PE-1>config>router>mpls# interface "PE-1 to P-1"
PE-1>config>router>mpls>if$ exit all
PE-1#
```

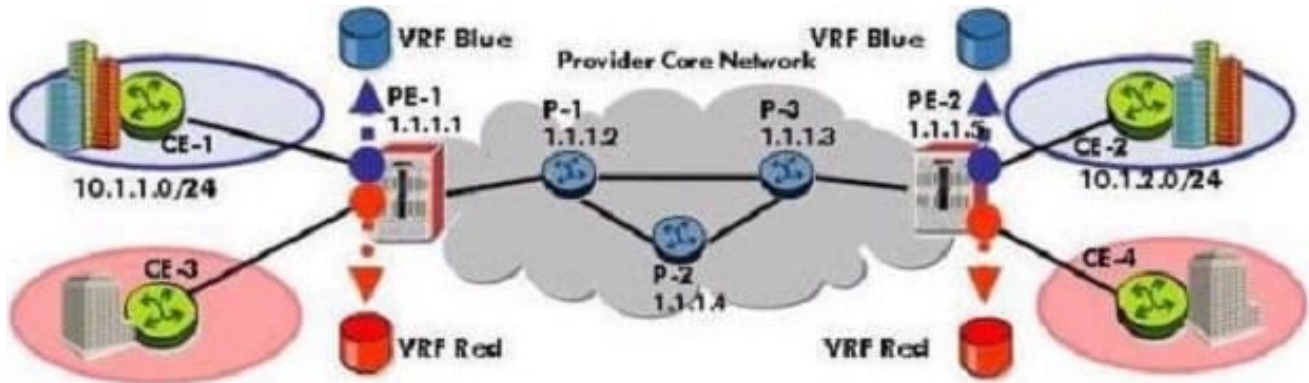
An Alcatel-Lucent 7750 SR is to be configured as a PE router that supports VPRNs using LDP as the transport protocol. Which of the following best describes this configuration?

- A. This configuration is correct and complete.
- B. This configuration is correct, except that the system interface must be added.
- C. This configuration is correct, except that the interfaces facing the CE routers must be added.
- D. MPLS configuration is not required.

Correct Answer: D

## QUESTION 9

Click the exhibit.



```
P-1# configure router ldp
P-1>config>router>ldp# interface-parameters
P-1>config>router>ldp>if-params# interface "P-1 to PE-1"
P-1>config>router>ldp>if-params>if# exit
P-1>config>router>ldp>if-params# interface "P-1 to P-2"
P-1>config>router>ldp>if-params>if# exit
P-1>config>router>ldp>if-params# interface "P-1 to P-3"
P-1>config>router>ldp>if-params>if# exit
```

An Alcatel-Lucent 7750 SR is to be configured as a core router that supports VPRNs using LDP as the transport protocol. Which of the following best describes this configuration?

- A. This configuration is correct and complete.
- B. This configuration is correct, but the interfaces must also be configured in the "configure router mpls" context.
- C. There is no configuration required for LDP in the core network.
- D. This configuration is correct but Targeted-LDP is also required.

Correct Answer: A

**QUESTION 10**

Which of the following about inter-AS model C VPRNs is FALSE?

- A. Within each AS, the ASBR advertises the system addresses of remote PE routers as labeled IPv4 routes.
- B. PE routers in different ASs exchange VPRN routing information directly over MP-eBGP.
- C. Within each AS, MP-iBGP sessions are established to exchange VPN-IPv4 prefixes between the PE routers.
- D. ASBRs exchange the system addresses of PE routers as VPN-IPv4 routes over MP-eBGP.

Correct Answer: D

**QUESTION 11**



A VPLS spoke SDP is terminated on a VPRN service. The remote side of the spoke SDP is operationally "Down" with a flag of "Service MTU Mismatch". Which command can you use on an Alcatel-Lucent 7750 SR to show the signaled operational VC-MTU?

- A. show service id base
- B. show router ldp bindings
- C. show service id sdp detail
- D. show service id vc-mtu

Correct Answer: B

---

### QUESTION 12

Which of the following statements is true regarding the Route Distinguisher? (Choose three)

- A. It is an 8 byte value containing 3 fields
- B. The Route Distinguisher must have the same value as the Route Target.
- C. The Administrator field contains either an AS number or an IP number
- D. To ensure uniqueness, Route Distinguishers are assigned by the IANA.
- E. The Route Distinguisher is not used if the customer addresses do not overlap
- F. The Assigned Number field must contain a public IP address

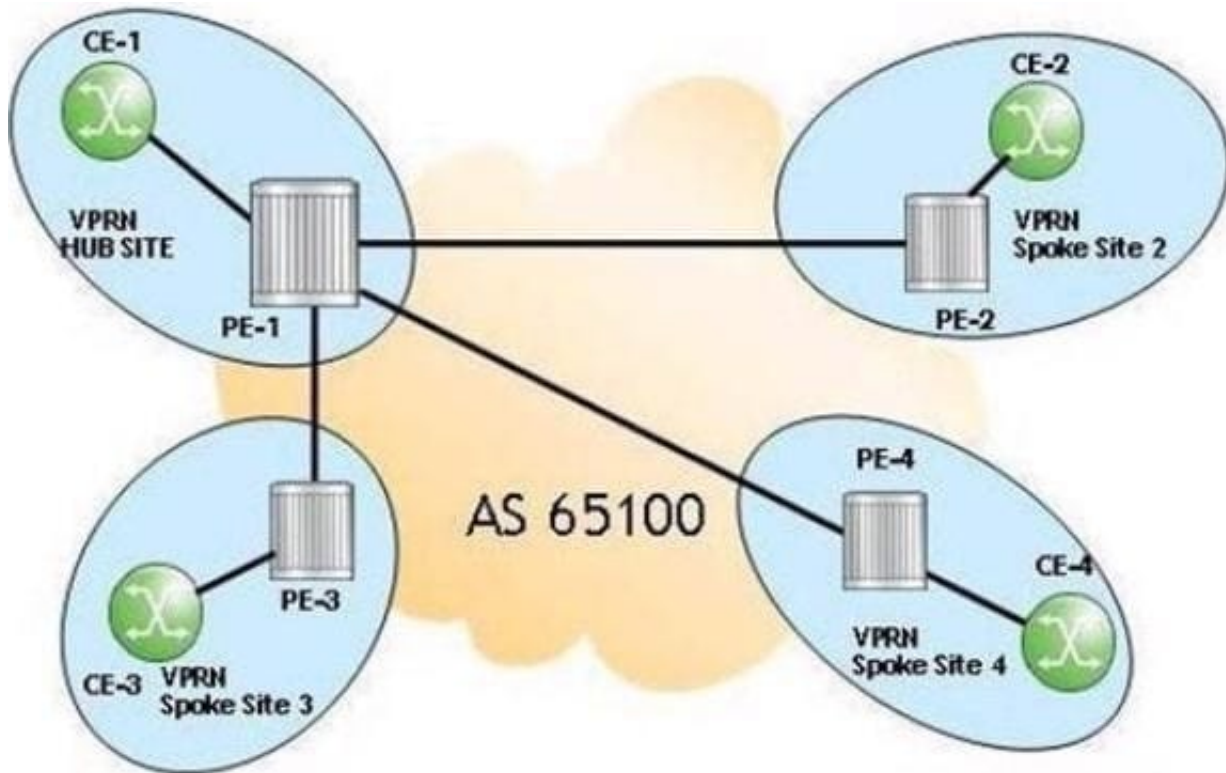
Correct Answer: ABC

---

### QUESTION 13

Click the exhibit.





```
community "Hub_Site" members "target:65100:1"  
community "Spoke_Sites" members "target:65100:2"
```

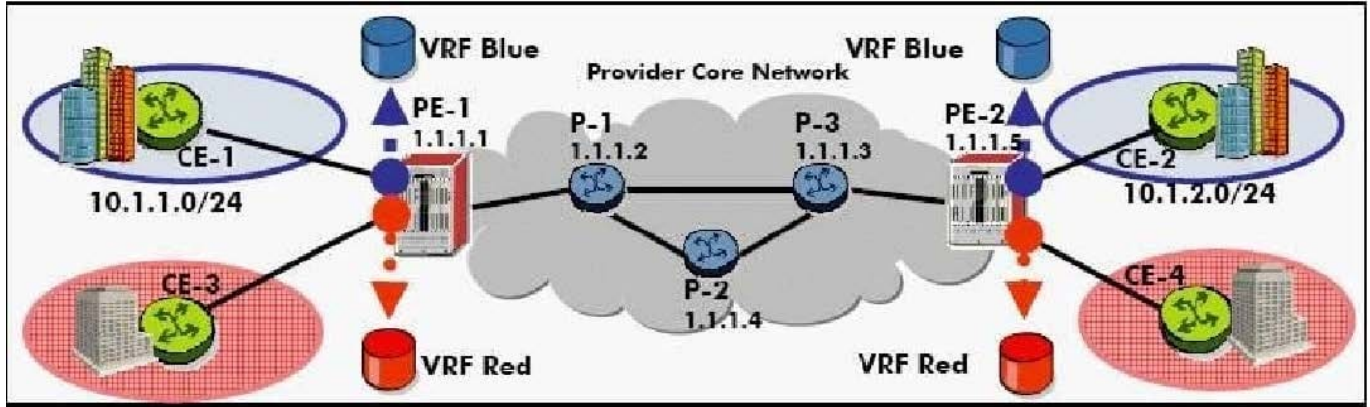
For the PE hub and spoke VPRN, which communities should be imported under the VPRN service on PE2?

- A. "Spoke.Sites" and "Hub\_Site"
- B. "Hub\_Site"
- C. "Spoke\_Sites"
- D. No communities should be imported

Correct Answer: B

#### QUESTION 14

Which command will display the Route Target associated to a specific prefix on an Alcatel-Lucent 7750 SR?



```

=====
Route Table (Router: XXXXXXXXXXXXX)
=====
Dest Address      Next Hop          Type    Proto    Age           Metric    Pref
-----
1.1.1.1/32        XXXXXXXXXXXXX     Local   Local    14h53m05s    0         0
1.1.1.2/32        XXXXXXXXXXXXX     Remote  OSPF     14h53m09s    101       10
1.1.1.3/32        XXXXXXXXXXXXX     Remote  OSPF     14h53m11s    201       10
1.1.1.4/32        XXXXXXXXXXXXX     Remote  OSPF     14h53m10s    201       10
1.1.1.5/32        XXXXXXXXXXXXX     Remote  OSPF     14h53m13s    301       10
=====
No. of Routes: 5
=====

```

- A. Show router bgp routes
- B. Show router bgp routes detail
- C. Show router route-table
- D. Show router route-table
- E. Either (b) or (d)

Correct Answer: B

**QUESTION 15**

What is wrong with the configuration shown below?

- A. The VPRN ID must be the same value as is used in the vrf-target command
- B. The VPRN ID must be the same value as is used in the route-distinguisher command
- C. The router-id command should not be used in this context
- D. The vrf-target command is mandatory
- E. There is nothing wrong with this configuration



Correct Answer: E

[Latest 4A0-106 Dumps](#)

[4A0-106 VCE Dumps](#)

[4A0-106 Exam Questions](#)