



4A0-104^{Q&As}

Alcatel-Lucent Services Architecture

Pass Alcatel-Lucent 4A0-104 Exam with 100% Guarantee

Free Download Real Questions & Answers **PDF** and **VCE** file from:

<https://www.passapply.com/4a0-104.html>

100% Passing Guarantee
100% Money Back Assurance

Following Questions and Answers are all new published by Alcatel-Lucent Official Exam Center

-  **Instant Download** After Purchase
-  **100% Money Back** Guarantee
-  **365 Days** Free Update
-  **800,000+** Satisfied Customers





QUESTION 1

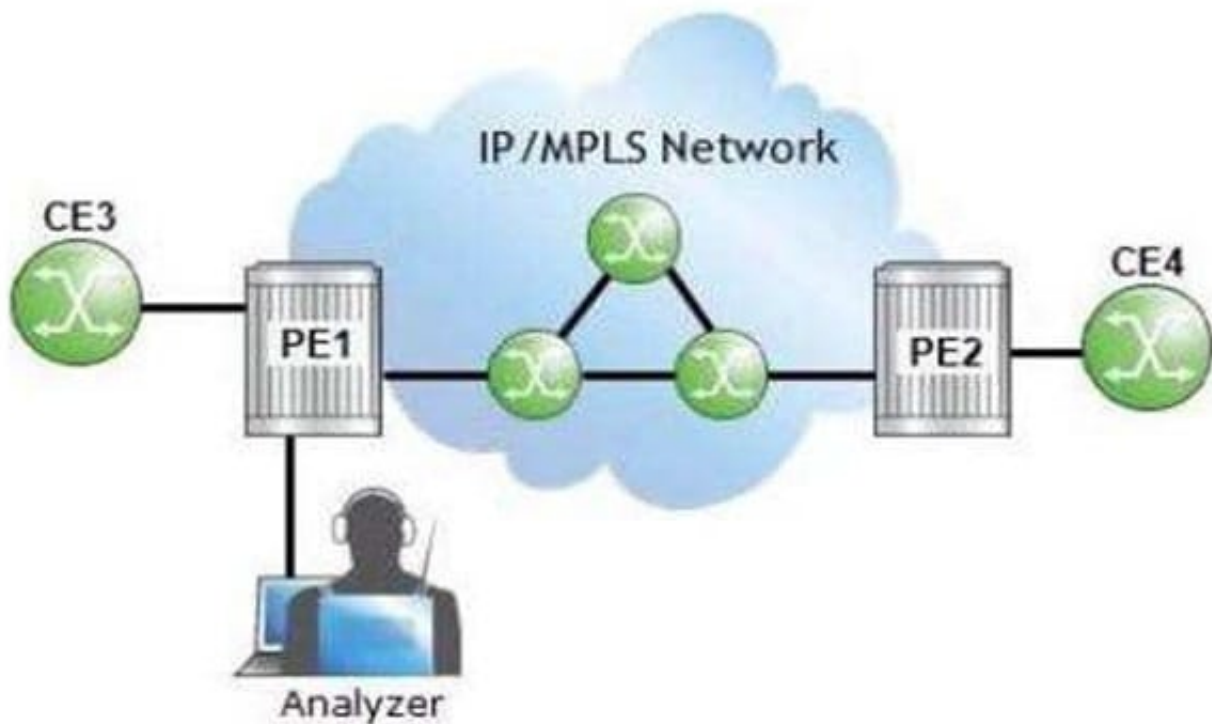
On which component is vc-type configured to create an E-pipe service that preserves the VLAN tag during transport?

- A. The SDP itself (outside of the E-pipe context).
- B. The SAP in the E-pipe.
- C. The mesh SDP in the E-pipe.
- D. The spoke SDP in the E-pipe.

Correct Answer: D

QUESTION 2

Click the exhibit.



The operator at PE1 wants to analyze the traffic between CE4 and PE2. On a Nokia 7750 SR, which of the following is required as part of the configuration?

- A. Both PE1 and PE2 need a mirror source.
- B. PE2 needs a mirror source with the remote source specified.
- C. PE1 needs a mirror source with the remote source specified.



- D. Both PE1 and PE2 need a mirror destination.
- E. PE2 needs a mirror destination that specifies a SAP.

Correct Answer: D

QUESTION 3

SAPs in an E-pipe service can only be configured on Ethernet ports

- A. TRUE
- B. FALSE

Correct Answer: B

QUESTION 4

On a Nokia 7750 SR, why must the MTU be explicitly set when configuring an IES spoke termination to a VPLS?

- A. By default, a VPLS signals an MTU based on the network port.
- B. By default, an IES sets its ip-mtu to the VC MTU of the VPLS.
- C. By default, an IES uses an MTU value based on its SAP.
- D. By default, an IES uses an MTU based on the network port.

Correct Answer: D

QUESTION 5

Which of the following SAPs will toward tagged frames but NOT untagged frames?

- A. sap 1/1/1
- B. sap 1/1/1:*
- C. sap 1/1/1:*.0
- D. sap 1/1/1:0
- E. None of the above.

Correct Answer: E

QUESTION 6

Which of the following best describes a distributed E-pipe Service?



- A. An E-pipe that has 2 or more SDPs configured.
- B. An E-pipe that has 3 or more SAPs configured.
- C. An E-pipe that has 2 SAPs on the same node but no SDPs configured
- D. An E-pipe that is configured between two nodes, each having 1 SAP and 1 SDP configured.

Correct Answer: D

QUESTION 7

Which of the following about configuring a distributed E-pipe service is TRUE?

- A. The VC ID on the mesh SDP must be explicitly configured.
- B. The VC ID on the spoke SDP must be explicitly configured.
- C. The VC ID on the mesh SDP does not have to be explicitly configured and it will use the service id.
- D. The VC ID on the spoke SDP does not have to be explicitly configured and it will use the service id.

Correct Answer: B

QUESTION 8

Click the exhibit.

```
R1# show router 100 fib 1
-----
FIB Display
-----
Prefix                                     Protocol
  NextHop
-----
10.1.5.0/24                                LOCAL
   10.1.5.0 (R1-R5)
10.6.4.0/24                                BGP_VPN
   10.10.10.4 (VPRN Label:131065 Transport:LDP)
10.10.10.5/32                               BGP
   10.1.5.5 Indirect (R1-R5)
10.10.10.6/32                               BGP_VPN
   10.10.10.4 (VPRN Label:131065 Transport:LDP)
192.168.10.0/24                             BGP
   10.1.5.5 Indirect (R1-R5)
192.168.20.0/24                             BGP_VPN
   10.10.10.4 (VPRN Label:131065 Transport:LDP)
-----
Total Entries : 6
```

The output is from PE router R1 about VPRN service 100. From which protocol did router R1 learn the prefix



192.168.20.0/24?

- A. LDP
- B. BGP
- C. MP-BGP
- D. MPLS

Correct Answer: C

QUESTION 9

Which of the following about SAPs is FALSE?

- A. A SAP can be associated with more than one service.
- B. A SAP is the subscriber's point of entry to the service network.
- C. A SAP is created by specifying a physical port and an encapsulation type.
- D. A SAP can only be created on a port configured as "access".

Correct Answer: A

QUESTION 10

Which of the following about SDPs is FALSE?

- A. An SDP is not required for a local service.
- B. A single SDP can carry different types of services.
- C. An SDP can simultaneously support GRE and MPLS encapsulation.
- D. An SDP can use the system IP address to indicate the far-end router.

Correct Answer: C

QUESTION 11

Which of the following statements are TRUE regarding a fully meshed VPLS service with a default setting? (Choose three.)

- A. The vc-id on the mesh-sdp must be explicitly configured.
- B. The vc-id on the mesh-sdp is automatically assigned by a PE using the service id.
- C. The VPLS service id, on all PE routers, does not have to match.

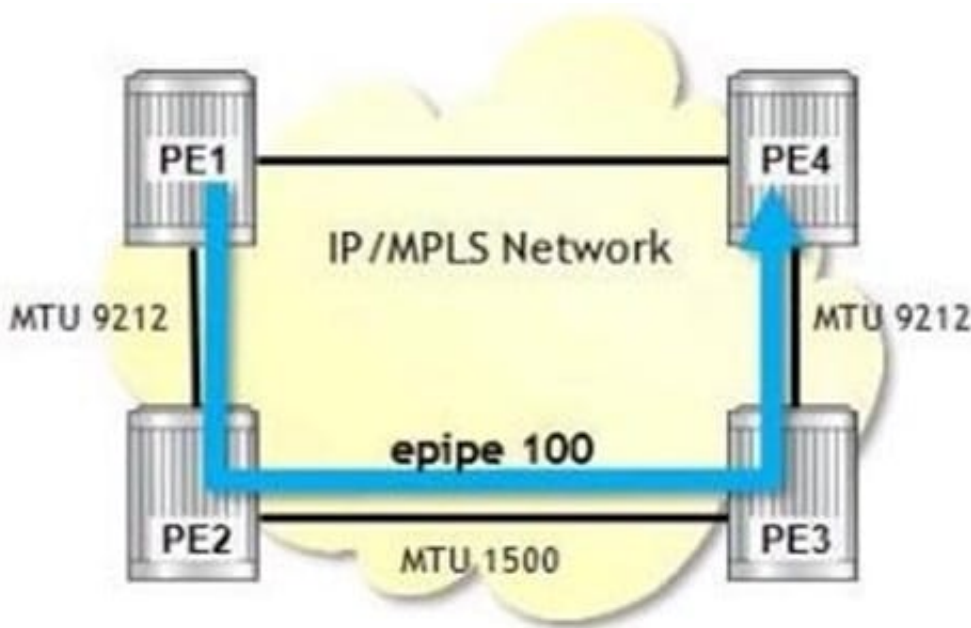


- D. The VPLS service id, on all PE routers, must match.
- E. If dynamic signaling is required, the signaling on all PE routers must be set to TLDP in the configuration of the SDPs.
- F. The signaling on all PE routers will default to TLDP in the configuration of the SDPs; therefore, no configuration change is required for dynamic signaling.

Correct Answer: ADF

QUESTION 12

Click the exhibit.



```
PE1# oam sdp-mtu 4 size-inc 1475 1500 step 1  
<output omitted>  
???
```

E-pipe 100 is using an SDP (4) with an LSP that uses the path shown (PE1-PE2-PE3-PE4). Which of the following is the expected output from the OAM command?



- A. PE1#oam sdp-mtu 4 size-inc 1475 1500 step 1

```
Size  Sent  Response
-----
1475  .      Success
1476  .      Success
1477  .      Success
1478  .      Success
1479  ...    Request Timeout
Maximum Response Size: 1478
```

- B. PE1#oam sdp-mtu 4 size-inc 1475 1500 step 1

```
Size  Sent  Response
-----
1475  .      Success
1476  .      Success
1477  .      Success
< ... omitted etc. >
1492  .      Success
1493  ...    Request Timeout
Maximum Response Size: 1492
```

- C. PE1#oam sdp-mtu 4 size-inc 1475 1500 step 1

```
Size  Sent  Response
-----
1475  .      Success
1476  .      Success
1477  .      Success
< ... omitted etc. >
1500  .      Success
Maximum Response Size: 1500
```

- D. PE1#oam sdp-mtu 4 size-inc 1475 1500 step 1

```
Size  Sent  Response
-----
1475  .      Success
1476  .      Success
1477  .      Success
< ... omitted etc. >
1500  .      Success
Maximum Response Size: 9212
```



- A. Option A
- B. Option B
- C. Option C
- D. Option D

Correct Answer: A

QUESTION 13

Which of the following SAPs will NOT forward untagged frames?

- A. sap 1/1/1
- B. sap 1/1/1:*
- C. sap 1/1/1:0
- D. sap 1/1/1:1

Correct Answer: D

QUESTION 14

Which VPWS service would be used to create a point-to-point Frame Relay service?

- A. E-pipe
- B. A-pipe
- C. F-pipe
- D. I-pipe
- E. C-pipe

Correct Answer: C

QUESTION 15

Which of the following are characteristics of a SDP? (Choose two.)

- A. SDPs are a logical way to direct traffic from one router to another.
- B. SDPs are a logical way to direct traffic between services.
- C. SDP IDs are locally unique.
- D. SDP IDs must be unique across the network.
- E. SDPs are specific to one service type



F. SDPs must use MPLS for their encapsulation

Correct Answer: AC

[4A0-104 PDF Dumps](#)

[4A0-104 VCE Dumps](#)

[4A0-104 Exam Questions](#)