



4A0-102^{Q&As}

Alcatel-Lucent Border Gateway Protocol

Pass Alcatel-Lucent 4A0-102 Exam with 100% Guarantee

Free Download Real Questions & Answers **PDF** and **VCE** file from:

<https://www.passapply.com/4a0-102.html>

100% Passing Guarantee
100% Money Back Assurance

Following Questions and Answers are all new published by Alcatel-Lucent Official Exam Center

-  **Instant Download** After Purchase
-  **100% Money Back** Guarantee
-  **365 Days** Free Update
-  **800,000+** Satisfied Customers





QUESTION 1

What is the result of configuring the following policy statement as a BGP import policy on the Alcatel-Lucent 7750 SR?

```
policy-statement "Policy-1"  
  entry 10  
    from  
      protocol bgp  
      prefix-list "List-1"  
    exit  
    action reject  
  exit  
exit  
default-action accept
```

- A. All BGP routes are rejected.
- B. All BGP routes are accepted.
- C. All routes matching prefix list "List-1" are rejected.
- D. All BGP routes matching prefix list "List-1" are rejected.

Correct Answer: D

QUESTION 2

Which of the following is considered a best practice for BGP address planning?

- A. Advertising external networks into IGP.
- B. Using system addresses for setting up iBGP sessions.
- C. Exporting the networks associated with the external links of eBGP peers into BGP.
- D. Optimizing BGP route table by exporting IGP routes into BGP.

Correct Answer: B

QUESTION 3

Which of the following is NOT a BGP message type?

- A. Route-Refresh

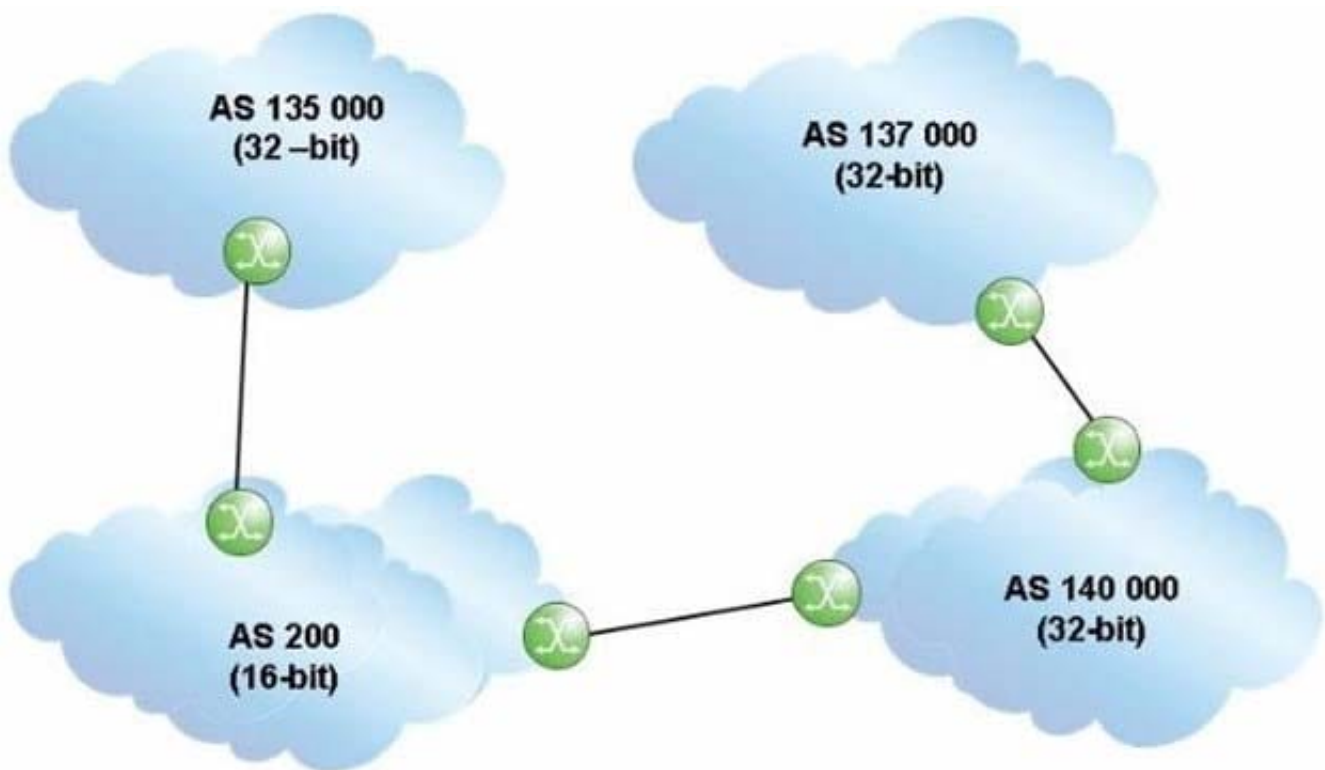


- B. OpenSent
- C. Notification
- D. Update
- E. Keepalive

Correct Answer: B

QUESTION 4

Click the exhibit.



An update travels from AS 135000 to AS 137000, traversing both 32-bit and 16-bit AS paths. What will the AS Path be when the update reaches AS 137000?

- A. 140000 200 135000
- B. 137000 140000 200 135000
- C. 140000 23456 135000
- D. 135000 200 140000

Correct Answer: A

QUESTION 5



An Alcatel-Lucent 7750 SR is configured with a local preference of 250. If it receives a BGP update with a local preference of 500, what local preference is sent to its eBGP peers?

- A. 100
- B. 250
- C. 500
- D. None

Correct Answer: D

QUESTION 6

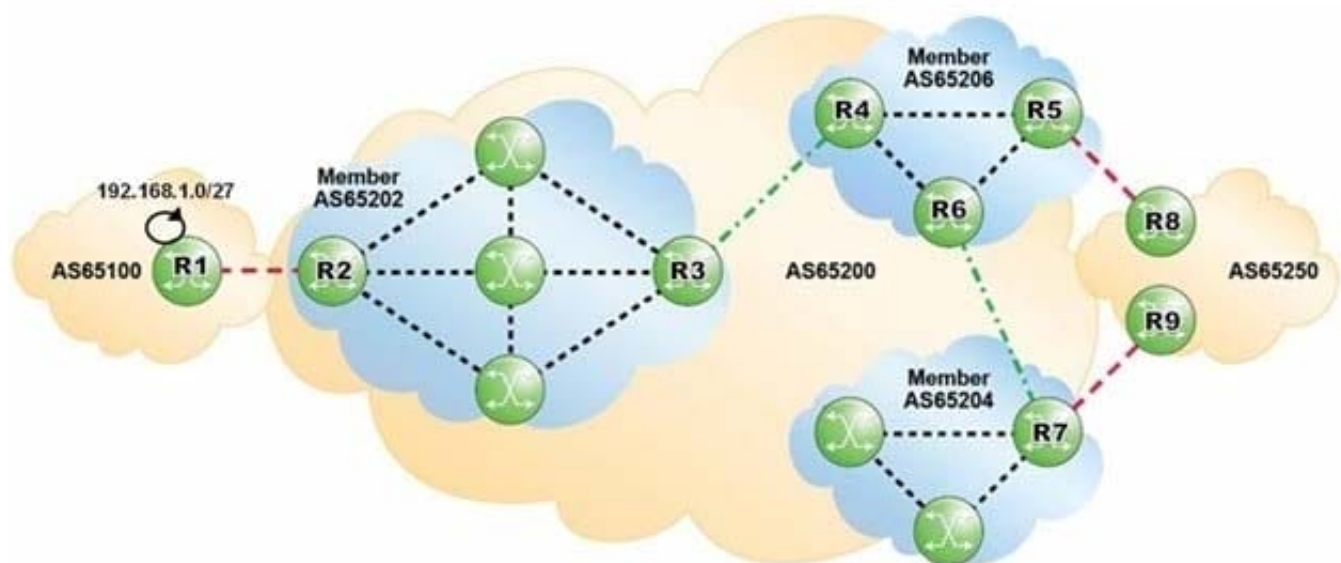
Which of the following regarding route reflectors is TRUE?

- A. Only the route reflector is configured with a cluster id.
- B. There can only be one route reflector in a cluster.
- C. Clients should have iBGP sessions with each other to maintain the mesh.
- D. There can only be one level of route reflectors in the topology.

Correct Answer: A

QUESTION 7

Click the exhibit.



AS 65100 is advertising 192.168.1.0/27 into BGP. Which of the following AS Paths would the prefix 192.168.1.0/27 contain when viewed on router R7?



- A. 65206 65202 65100
- B. (65206 65202)65100
- C. (65204 65206 65202) 65100
- D. (65200) 65100

Correct Answer: B

QUESTION 8

Which of the following statements regarding Internet Exchange Points is FALSE?

- A. They provide both peering and transit services.
- B. They provide services only to Tier 1 service providers.
- C. They can be either public or private.
- D. They provide services at the local, regional and continental levels.

Correct Answer: B

QUESTION 9

Which of the following statements regarding the Internet is FALSE?

- A. It is a global network relying on interconnections provided by Internet service providers.
- B. It is a continuous and interconnected set of public IP networks, advertised and shared across the globe.
- C. It is a settlement-free global network that provides interconnection between Internet service providers.
- D. It is a network that allows any Internet service provider to reach every other Internet service provider in the world.

Correct Answer: C

QUESTION 10

Which of the following statements regarding the Originator_ID attribute is TRUE?

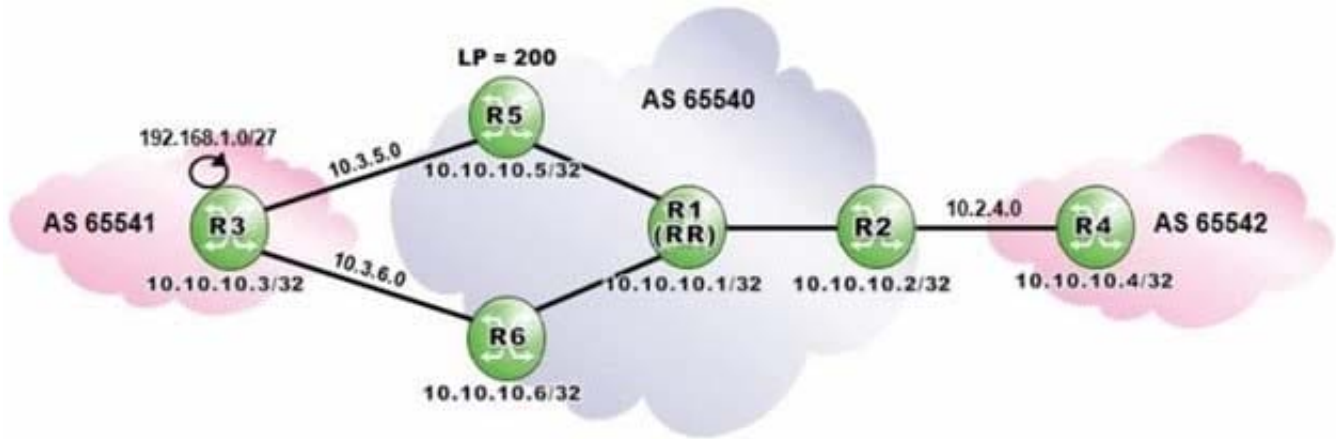
- A. The BGP router that originates an update sets the Originator_ID.
- B. The Originator_ID is set to the ClusterID of the advertising router reflector.
- C. Both confederation and route reflector topologies use the Originator_ID.
- D. A BGP router ignores an update that contains its own BGP router ID as Originator_ID.

Correct Answer: D



QUESTION 11

Click the exhibit.



Router R1 is a route reflector with clients R2, R5 and R6. Prefixes advertised by router R5 have a local preference of 200. Router R3 advertises the prefix 192.168.1.0/27 to routers R5 and R6.

Assuming that router R6 is configured with "advertise-external", what is the expected output of "show router bgp routes" when executed on router R5?

- A. Option A
- B. Option B
- C. Option C
- D. Option D

Correct Answer: C

QUESTION 12

What class of attribute is Originator_ID?

- A. Well-known mandatory.
- B. Well-known discretionary.
- C. Optional transitive.
- D. Optional non-transitive.

Correct Answer: D

QUESTION 13



Which of the following regarding BGP Path Identifier is FALSE?

- A. Path-ID is a four-octet identifier pre-pended to the NLRI field of a BGP update.
- B. Path-ID is an optional transitive attribute used to advertise multiple paths.
- C. Path-ID uniquely identifies each path advertised to a neighbor.
- D. A BGP speaker that re-advertises a route must generate its own Path-ID.

Correct Answer: B

QUESTION 14

Assuming that "client1" and "client2" are directly-connected networks, what is the result of executing the following BGP export policy?

```
entry 10
  from
    protocol direct
  exit
  action accept
    community add "North"
  exit
exit
entry 20
  from
    prefix-list "client1"
  exit
  action accept
    community add "West"
  exit
exit
entry 30
  from
    prefix-list "client2"
  exit
  action accept
    community add "East"
  exit
exit
default-action reject
```

- A. "client1" routes will be tagged with communities "North" and "West".

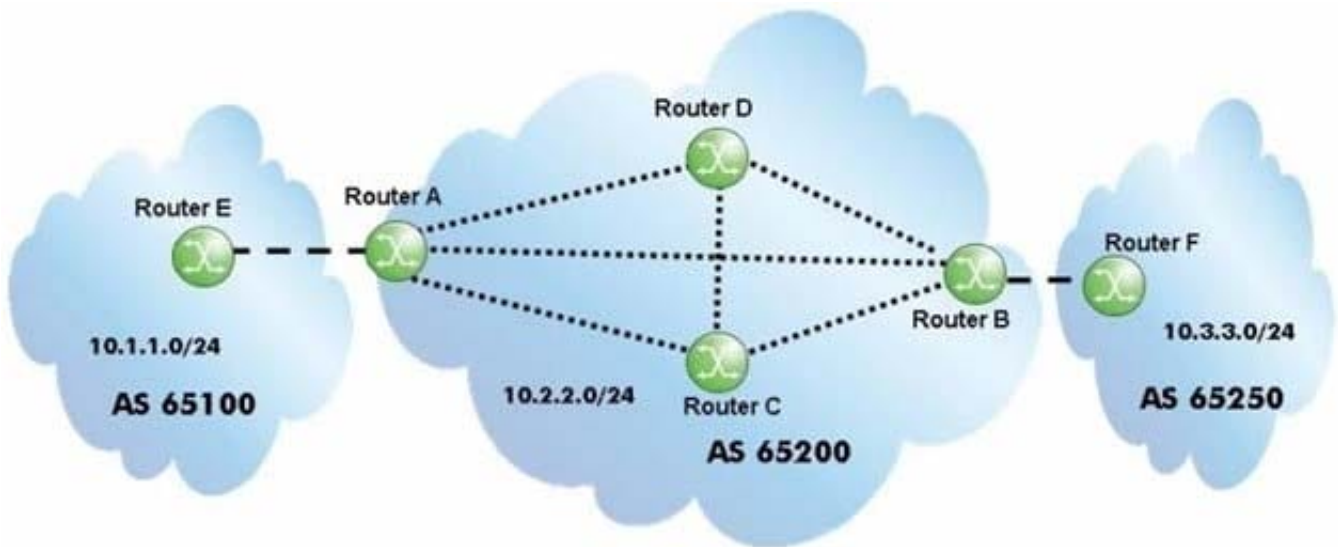


- B. "client1" routes will be tagged with community "West".
- C. "client1" routes will be tagged with community "North".
- D. "client1" routes will be rejected.

Correct Answer: C

QUESTION 15

Click the exhibit.



After router A receives the BGP update for the 10.3.3.0/24 prefix, which routers will the route be propagated to?

- A. All routers with which it has a BGP session.
- B. All routers with which it has a BGP session, except the router it received the update from, which is router B.
- C. All routers with which it has a BGP session, except the router it received the update from, which is router C.
- D. All routers with which it has a BGP session, except the router it received the update from, which is router D.
- E. Only eBGP neighbors.

Correct Answer: E

[4A0-102 Practice Test](#)

[4A0-102 Study Guide](#)

[4A0-102 Exam Questions](#)