



# 4A0-100<sup>Q&As</sup>

Alcatel-Lucent Scalable IP Networks

## Pass Alcatel-Lucent 4A0-100 Exam with 100% Guarantee

Free Download Real Questions & Answers **PDF** and **VCE** file from:

<https://www.passapply.com/4a0-100.html>

100% Passing Guarantee  
100% Money Back Assurance

Following Questions and Answers are all new published by Alcatel-Lucent Official Exam Center

- ⚙️ **Instant Download** After Purchase
- ⚙️ **100% Money Back** Guarantee
- ⚙️ **365 Days** Free Update
- ⚙️ **800,000+** Satisfied Customers





#### QUESTION 1

Which device is responsible for removing the MPLS label before the packet reaches the CE device?

- A. The CE device removes the MPLS label.
- B. The last LSR on the LSP removes the MPLS label.
- C. MPLS labels are not removed until they reach the final destination.
- D. The egress LER removes the MPLS label.

Correct Answer: D

---

#### QUESTION 2

Which of the following describes an IP filter on the Nokia 7750 SR?

- A. An IP filter is used to examine an IP packet and its contents.
- B. An IP filter is applied to allow or deny IP packets into a network.
- C. Multiple ingress and egress filter policies can be applied to a network interface.
- D. Once an IP filter is applied it cannot be modified.

Correct Answer: B

---

#### QUESTION 3

What are some of the characteristics of BGP? Choose three

- A. BGP is an exterior gateway protocol.
- B. BGP routing is based on distance vector.
- C. BGP sends periodic updates to its neighbors.
- D. A router running BGP protocol needs an Autonomous system number

Correct Answer: ABD

---

#### QUESTION 4

Which of the following is not supported on the Nokia 7450 ESS?

- A. Support for IPv6.
- B. Support for POS.



C. Upgrade path to the Nokia 7750 SR.

D. Support for IS-IS

Correct Answer: C

---

#### QUESTION 5

On the Nokia 7750 SR, which key displays all command options and their descriptions?

A. ?

B. Tab

C. Space bar

D. Return

Correct Answer: A

---

#### QUESTION 6

Which ATM adaptation layer is commonly used for transporting IP datagrams or non-real time data?

A. AAL0

B. AAL1

C. AAL2

D. AAL3/4

E. AAL5

Correct Answer: E

---

#### QUESTION 7

Which of the following statements about IP addressing is TRUE?

A. IP addresses are assigned by IEEE to vendors.

B. Classless IP addresses provide hierarchy based on a variable length subnet mask.

C. Classless IP addresses provide hierarchy based on fixed subnet masks of /24, /16, and /8.

D. IP addresses provide hierarchy based on the country code and regional identifier.

Correct Answer: B

---



#### QUESTION 8

What must be configured before a LAG becomes operational?

- A. The cost must be statically configured on all ports in the LAG.
- B. The speed and duplex setting on all ports in the LAG must be the same.
- C. Auto-negotiation must be enabled on all ports in the LAG.
- D. The duplex setting on all the ports in the LAG must be forced to half.

Correct Answer: B

---

#### QUESTION 9

What information is used to separate VLANs on a VLAN trunk that connects multiple VLANs?

- A. VLAN tag.
- B. IP Header.
- C. FCS.
- D. Priority Value.

Correct Answer: A

---

#### QUESTION 10

Which of the following best describes a hub?

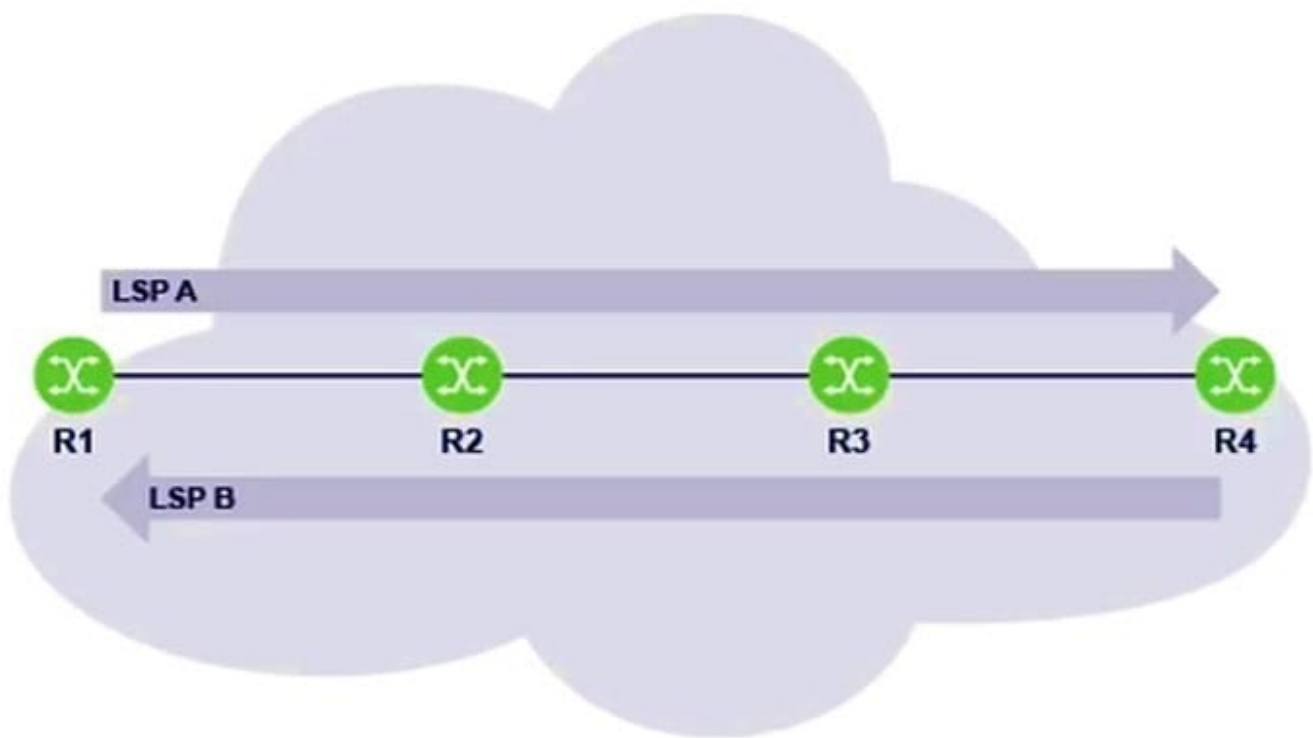
- A. A passive device used to connect cables without signal amplification.
- B. A device that receives and retransmits data without Layer 2 header inspection.
- C. A device that receives and retransmits data based on the Layer 2 destination address.
- D. A device that receives and retransmits data based on the Layer 3 destination address.

Correct Answer: B

---

#### QUESTION 11

Which of the following statements about router R3 is TRUE?



- A. Router R3 is the iLER for LSP B.
- B. Router R3 is the eLER for LSP A.
- C. Router R is an LSR for both LSP A and LSP B.
- D. Router R3 is LSR for LSP A and an LER for LSP B.

Correct Answer: C

## QUESTION 12

Which of the following statements are TRUE regarding IP-filters? (Choose 2)

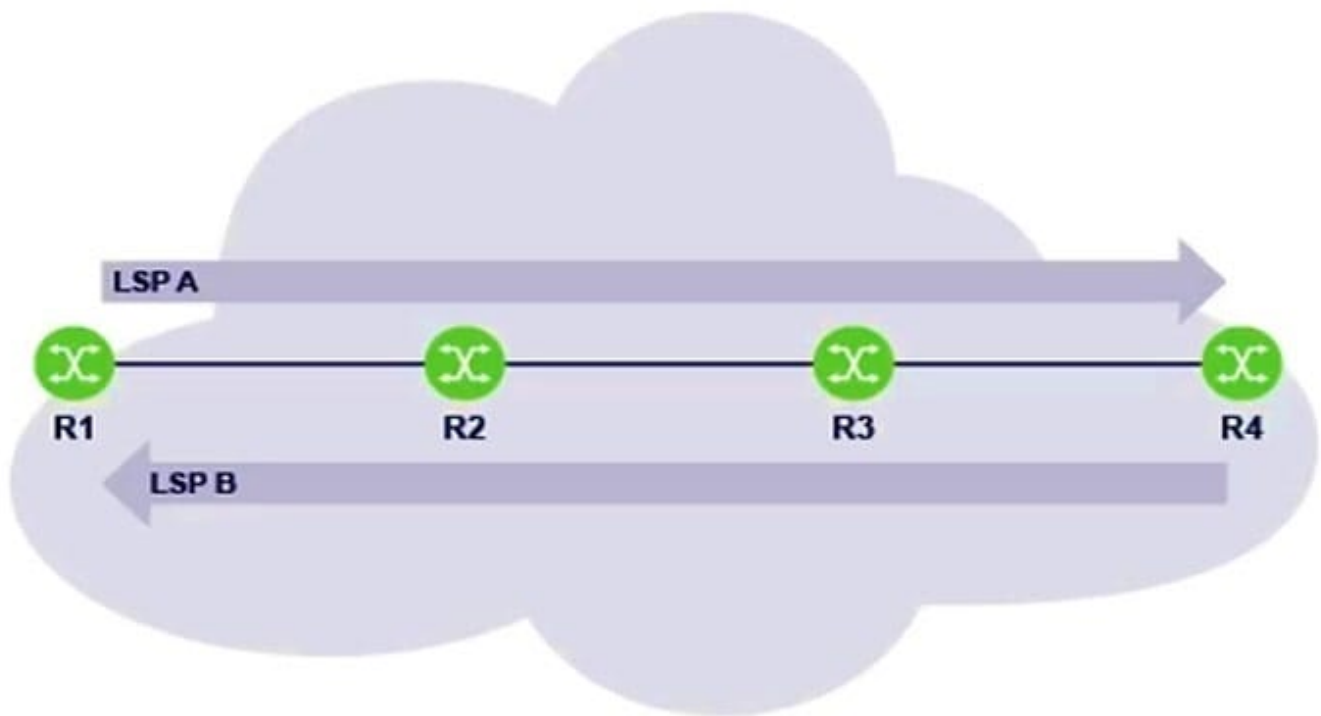
- A. IP-filters may be applied on interface ingress, egress, or both.
- B. Multiple IP-filters can be applied in each direction.
- C. An IP-filter may only be applied to a single interface if the scope is set to template.
- D. An IP-filter may have multiple match criteria per entry.
- E. The default-action of an IP-filter is always drop.

Correct Answer: AD

## QUESTION 13



Which of the MPLS routers is responsible for pushing new labels for LSP A and LSP B?



- A. Router R1 pushes labels for both LSP A and LSP B.
- B. Router R4 pushes labels for both LSP A and LSP B.
- C. Router R1 pushes labels for LSP A, while router R4 pushes labels for LSP B.
- D. Router R4 pushes labels for LSP A, while router R1 pushes labels for LSP B.

Correct Answer: C

#### QUESTION 14

Which statement best describes a SAP?

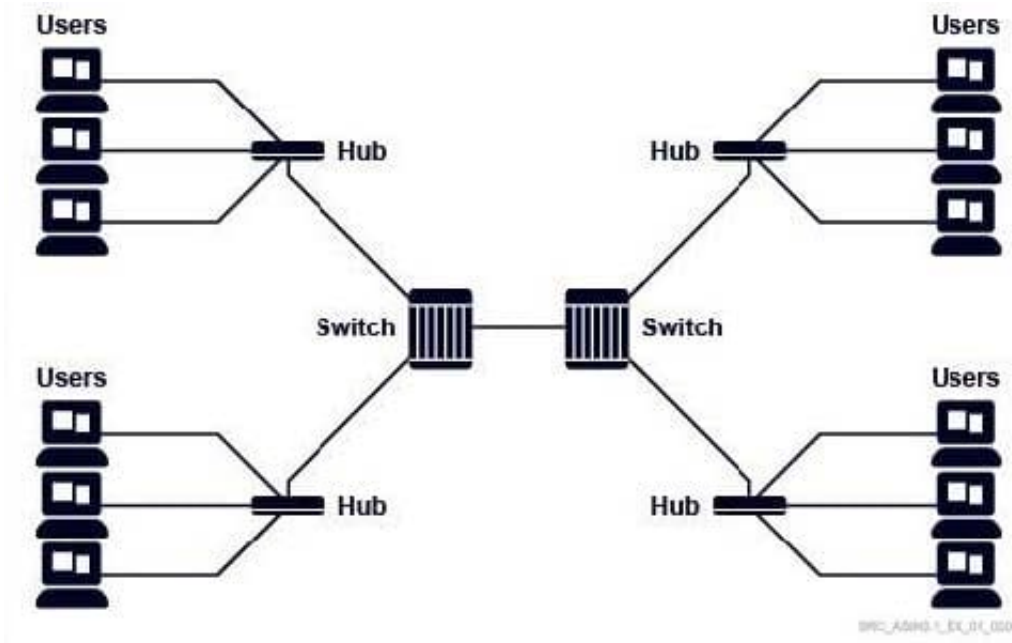
- A. The Service ATM Point is used for ATM connections to a PE.
- B. The Service Access Point is defined on the PE device and is the customers access to the service.
- C. The Service Access Point is defined on the P device and is the customers access to the service.
- D. The Service Access Point is defined on the CE device and is the customers access to the service.

Correct Answer: B

#### QUESTION 15



An Ethernet Local Area Network (LAN) consists of the components shown in the diagram. How many collision domains are on this LAN?



- A. 1
- B. 2
- C. 5
- D. 6

Correct Answer: C

[4A0-100 Practice Test](#)

[4A0-100 Study Guide](#)

[4A0-100 Exam Questions](#)