



# 400-201<sup>Q&As</sup>

CCIE Service Provider Written

## Pass Cisco 400-201 Exam with 100% Guarantee

Free Download Real Questions & Answers **PDF** and **VCE** file from:

<https://www.passapply.com/400-201.html>

100% Passing Guarantee  
100% Money Back Assurance

Following Questions and Answers are all new published by Cisco  
Official Exam Center

-  **Instant Download** After Purchase
-  **100% Money Back** Guarantee
-  **365 Days** Free Update
-  **800,000+** Satisfied Customers





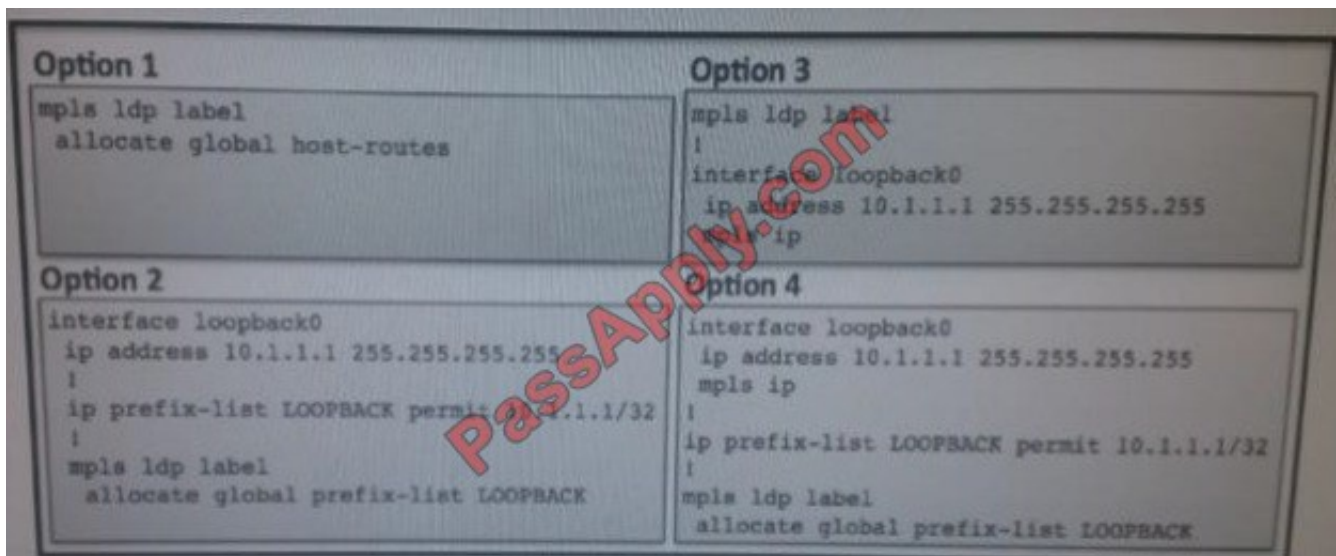
### QUESTION 1

Which statement about IPv6 security is true?

- A. Reconnaissance attacks are easier to do in IPv6 compared to IPv4.
- B. IPv6 amplification attacks can happen using IPv6 broadcast address.
- C. RA-guard feature is used to block rogue RAs.
- D. ICMP policies on firewalls do not need to be changed for IPv6 because ICMP is Layer 3 agnostic.

Correct Answer: C

### QUESTION 2



Refer to the exhibit. Which Cisco IOS XE configuration method allocates a label for prefixes with a /32 subnet mask only?

- A. Option 1
- B. Option 2
- C. Option 3
- D. Option 4

Correct Answer: A

### QUESTION 3

A service provider has a requirement to deliver WAN gateway functionality to multi-tenant, provider-hosted clouds.



Which cisco platform meets this requirement?

- A. Cisco ASR 9000 series
- B. Cisco NX-OS
- C. Cisco ASR 1000 Series
- D. Cisco CSR 1000v
- E. Cisco CRS series

Correct Answer: D

---

#### QUESTION 4

A network engineer is connecting a router that is not manufactured by Cisco to a Cisco 7613 Router with a 10 Gigabit Ethernet Route Switch Processor uplink interface. The uplink interface is not in shutdown mode, but the interface does not come up. What is the most likely cause of the issue in this scenario?

- A. The remote device does not support 10 Gigabit Ethernet.
- B. Autonegotiation is enabled.
- C. There is a faulty interface.
- D. There is a faulty cable.

Correct Answer: B

---

#### QUESTION 5

Which two BGP mechanisms solve the BGP full-mesh paradigm? (Choose two.)

- A. BGP link state
- B. MPLS VPN
- C. route reflectors
- D. hierarchical VPLS
- E. confederation
- F. route policy filtering
- G. community SOO

Correct Answer: CE

---



#### QUESTION 6

When applied to the MPLS data plane, Segment Routing offers the ability to tunnel which of the following MPLS services?

- A. VPWS
- B. LDP
- C. TLS
- D. BGP-LS

Correct Answer: A

Reference: [https://www.cisco.com/c/en/us/td/docs/ios-xml/ios/seg\\_routing/configuration/xr-3s/segrrt-xr-3s-book/intro-seg-routing.html](https://www.cisco.com/c/en/us/td/docs/ios-xml/ios/seg_routing/configuration/xr-3s/segrrt-xr-3s-book/intro-seg-routing.html)

---

#### QUESTION 7

A service provider has a requirement to prevent and prevent spoofing attacks by verifying the reachability of the sources address in a packet that is forwarded into its network. Which method must be the service provider use?

- A. CoPP
- B. iACL
- C. uRPF
- D. RTBH

Correct Answer: C

---

#### QUESTION 8

In PPPoA architecture, which two methods are most commonly deployed? (Choose two)

- A. Terminating PPP sessions at the service provider
- B. PPP framing
- C. PPP multiplexing
- D. GRE tunneling
- E. L2TP tunneling

Correct Answer: AE

Reference:

[http://www.cisco.com/en/US/tech/tk175/tk819/technologies\\_white\\_paper09186a0080093bd\\_2.shtml](http://www.cisco.com/en/US/tech/tk175/tk819/technologies_white_paper09186a0080093bd_2.shtml)

---



In PPPoA architectures, the service destination can be reached in different ways. Some of the most commonly deployed methods are:

Terminating PPP sessions at the service provider

L2TP Tunneling

Using SSG

---

#### QUESTION 9

In a multihop BFD scenario, which two options create a multihop template and associate it with maps of destinations and associated timers? (Choose two)

- A. Fallover BFD
- B. BFD echo
- C. BFD map
- D. BFD template
- E. BFD version 2

Correct Answer: CD

---

#### QUESTION 10

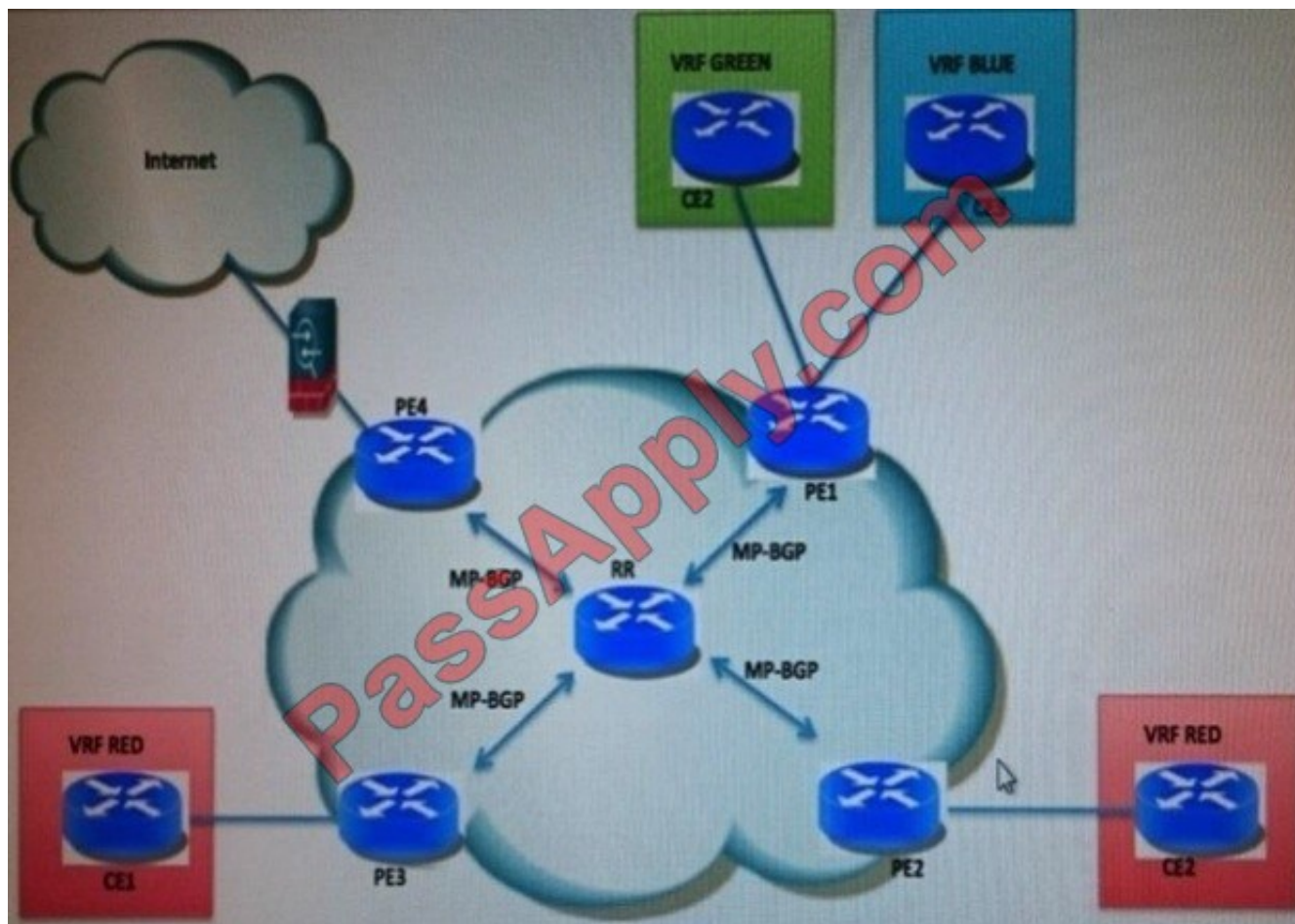
A network has a single exit and is using a default route. An operator is worried about denial of service at the network border. Which unicast RPF check mode must the operator apply at the border for optimal protection?

- A. loose mode with allow self ping
- B. loose mode
- C. strict mode with allow-self-ping
- D. strict mode with allow-default option
- E. strict mode

Correct Answer: D

---

#### QUESTION 11



Refer to the exhibit. The Service Provider is deploying Internet service to its VRF customers by using vrf INTERNET. A dedicated firewall provides NAT functionality towards the Internet. Assume that IP address overlapping between VRFs is not an issue.

Which three configuration steps are required to add Internet service to the VRF customers? (Choose three.)

- A. Export the RD of vrf INTERNET from all customer VRFs.
- B. Originate a default route on PE4 in vrf INTERNET.
- C. Import the RD from vrf INTERNET in all customer VRFs.
- D. Originate a default route on the firewall in vrf INTERNET.
- E. Import the VRF "INTERNET" Route Target in all customer VRFs.
- F. Import the Route Target of all customer VRFs in vrf INTERNET.
- G. Leak all VRF routes to the global routing table.

Correct Answer: BCG



## QUESTION 12

An operations engineer from AS 2000 must deploy this inbound routing policy.

1.

Based on RFC1998, modify the local-preference value for prefixes containing BGP community values 2000:90 and 2000:110

2.

Strip any BGP community of the BGP prefixes received from customers that are in the range between 2000:1 and 2000:2000. Any other BGP community values must not be removed

3.

Apply 2000:1003 BGP community value, which indicates that the BGP prefix is learned from a customer Which configuration accomplishes this BGP routing policy?

A. route-policy CUSTOMER-COMMUNITIES if community matches-any (2000:90) then set local-preference 90 elseif community matches-any (2000:110) then set local-preference 110 endif if community matches-any (2000:[1..89], 2000:[91..109], 2000:[111..2000]) then delete community all endif set community (2000:1003) end-policy

B. route-policy CUSTOMER-COMMUNITIES if community matches-any (2000:90) then set local-preference 90 elseif community matches-any (2000:110) then set local-preference 110 endif delete community in (2000:[1...2000]) set community (2000:1003) end-policy

C. route-policy CUSTOMER-COMMUNITIES if community matches-any (2000:90) then set local-preference 90 elseif community matches-any (2000:110) then set local-preference 110 endif set community (2000:1003) additive delete community in (2000:[1..2000]) end-policy

D. route-policy CUSTOMER-COMMUNITIES delete community in (2000:[1:2000]) if community matches-any (2000:90) then set local-preference 90 elseif community matches-any (2000:110) then set local-preference 110 endif set community (2000:1003) additive end-policy

Correct Answer: D

[Latest 400-201 Dumps](#)

[400-201 PDF Dumps](#)

[400-201 VCE Dumps](#)





To Read the [Whole Q&As](#), please purchase the [Complete Version](#) from [Our website](#).

## Try our product !

100% Guaranteed Success  
100% Money Back Guarantee  
365 Days Free Update  
Instant Download After Purchase  
24x7 Customer Support  
Average 99.9% Success Rate  
More than 800,000 Satisfied Customers Worldwide  
Multi-Platform capabilities - [Windows](#), [Mac](#), [Android](#), [iPhone](#), [iPod](#), [iPad](#), [Kindle](#)

We provide exam PDF and VCE of Cisco, Microsoft, IBM, CompTIA, Oracle and other IT Certifications.  
You can view Vendor list of All Certification Exams offered:

<https://www.passapply.com/allproducts>

## Need Help

Please provide as much detail as possible so we can best assist you.  
To update a previously submitted ticket:



 <b>One Year Free Update</b> Free update is available within One Year after your purchase. After One Year, you will get 50% discounts for updating. And we are proud to boast a 24/7 efficient Customer Support system via Email.	 <b>Money Back Guarantee</b> To ensure that you are spending on quality products, we provide 100% money back guarantee for 30 days from the date of purchase.	 <b>Security &amp; Privacy</b> We respect customer privacy. We use McAfee's security service to provide you with utmost security for your personal information & peace of mind.
---	---	--

Any charges made through this site will appear as Global Simulators Limited.  
All trademarks are the property of their respective owners.  
Copyright © passapply, All Rights Reserved.