



3V0-732^{Q&As}

VMware Certified Advanced Professional 7 - Cloud Management and Automation Design Exam

Pass VMware 3V0-732 Exam with 100% Guarantee

Free Download Real Questions & Answers **PDF** and **VCE** file from:

<https://www.passapply.com/3v0-732.html>

100% Passing Guarantee
100% Money Back Assurance

Following Questions and Answers are all new published by VMware Official Exam Center

-  **Instant Download** After Purchase
-  **100% Money Back** Guarantee
-  **365 Days** Free Update
-  **800,000+** Satisfied Customers





QUESTION 1

An architect has been tasked with creating a backup design for a vRealize Automation deployment. As part of the engagement there is a requirement to document justification to perform a backup.

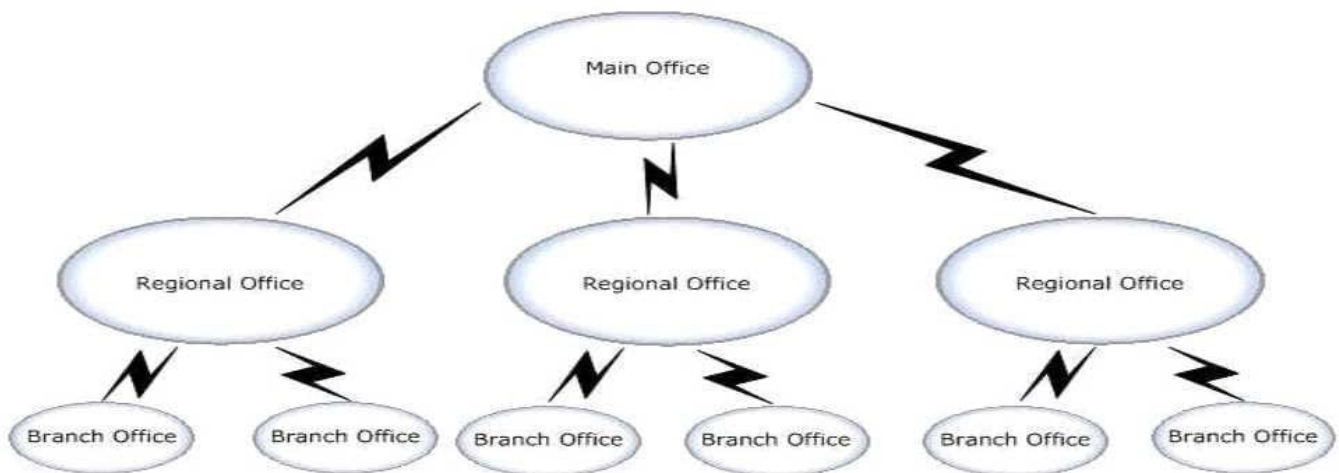
What are two reasons to perform a full backup of vRealize Automation deployment components? (Choose two.)

- A. To prepare for scaling of any of the system components.
- B. To prepare for patching of any of the system components.
- C. To prepare for replacing certificates.
- D. To prepare for upgrades of any of the system components.

Correct Answer: CD

QUESTION 2

A company has a main office, three regional offices, and six branch offices. The network links are configured as shown in the exhibit. View the Exhibit:



During information gathering, an architect records: The regional offices are located in secure bunkers. The CTO feels this would be a good location for all the vRealize Automation components to meet their BC/DR objectives. However, the CTO is looking for the best design while maintaining their very high security requirements. The branch offices are located in very remote locations with unpredictable network performance. Reliance on the main and regional offices needs to be minimal while still allowing provisioning of machines in the branch offices. The branch offices consist of three host vSphere clusters. There is synchronous vSphere Metro Storage Cluster (vMSC) between the regional offices as well as replicated backups between the regional offices with replication running nightly. The CEO wants to have the lowest possible RPO and RTO of the vRealize portal including the ability to manage already provisioned machines while NOT increasing the amount of data being replicated between the regional offices as much as possible. Referring to the exhibit, which two design specifications can the architect recommend to meet requirements? (Choose two.)

- A. distributed vRealize Automation management solution in the main office
- B. vSphere agents in each of the branch offices



- C. distributed vRealize Automation management solution in each of the regional offices
- D. distributed vRealize Automation management solution across the regional offices
- E. vSphere agents in the regional offices that manage the regional and branch offices

Correct Answer: DE

QUESTION 3

An architect has been asked to design a machine blueprint for the development team. The machine(s) of each deployment must contain dynamically-assigned unique IP\\'s that could be reached by the resources on the corporate network. Which type of network should the architect recommend for this blueprint?

- A. On-Demand NAT Network
- B. Existing Network
- C. On-Demand Routed Network
- D. On-Demand Load Balancer

Correct Answer: A

QUESTION 4

An Internet Service Provider requires the use of vRealize Automation to create blueprints and application services. It must catalog the blueprints once and share across multiple tenants in order to maintain standards and avoid rework. Which statement is true about blueprints and application services?

- A. Blueprints and application services CANNOT be shared across tenants.
- B. Blueprints CANNOT be shared across tenants, but application services can be shared.
- C. Blueprints and application services can be shared across tenants.
- D. Application services can be shared across tenants, but blueprints CANNOT be shared.

Correct Answer: C

QUESTION 5

The architect for a digital transformation initiative has decided that, given the current characteristics of the company, he is going to implement a medium si-ze deployment of vRealize Automation.

Which three types of components are required for this size deployment? (Choose three.)

- A. Infrastructure IaaS load balancer
- B. vRealize Automation appliance



- C. vRealize Orchestrator appliance
- D. MSSQL failover cluster instance
- E. vRealize Automation appliance load balancer

Correct Answer: ADE

QUESTION 6

A company's vRealize Automation infrastructure is using replicated storage as well as local storage.

All production virtual machine deployments should be placed into the "Production" folder so that it is on replicated storage. For the company's development environment, all deployments should be placed in the "Development" VM folder so

that it is on non-replicated storage. Which setting should be configured for the production blueprint?

- A. VMware.VirtualCenter= Development
- B. VMware.VirtualCenter= Production
- C. VMware.VirtualCenter.Folder= Production
- D. VMware.VirtualCenter.Folder= Development

Correct Answer: D

QUESTION 7

An architect for a vRealize Automation (vRA) deployment project has met with the IT team and gathered the following requirements:

1. Automated 30-day power off and archive
2. 99.99% SLA of the custom portal
3. Utilize built-in functionality
4. HIPAA Compliance
5. API calls to vRA and NSX



6.

Custom Portal

To which infrastructure quality does the 99.99% SLA of the custom portal technical requirement map?

- A. Manageability
- B. Performance
- C. Security
- D. Availability

Correct Answer: D

QUESTION 8

A financial services company has mandated that all IP and DNS entries be allocated from an existing thirdparty IPAM solution. Also, for auditing purposes, all systems must handle user authentication via the existing open source LDAP directory.

When considering a logical design for this scenario, which is true about the dependency relationships of these systems?

- A. The LDAP system is an upstream dependency and the IPAM system is a downstream dependency of vRealize Automation.
- B. The LDAP system is an upstream dependency and the LDAP system is a downstream dependency of vRealize Automation.
- C. Both the IPAM and LDAP systems are external, upstream dependencies of vRealize Automation.
- D. Both the IPAM and LDAP systems are external, downstream dependencies of vRealize Automation.

Correct Answer: B

QUESTION 9

A cloud architect is tasked with providing a design for integration with a third-party system.

The following requirements have been identified:

When a user requests a virtual machine, vRealize Automation should pass the user selected application name with its key to the third-party system.

The application list could be updated weekly following the architecture approval meeting. It currently has 250 items.

Impacts to the vRealize Automation virtual machine request screen's performance should be minimized.

What would be the best solution to meet these requirements?



- A. Create a vRO action to return application values as "Array\String" by reading from the third-party system dynamically, Create a display drop-down custom property with external values and map it to the vRO action.
- B. Design a schedule vRealize Orchestrator (vRO) workflow to read values from the third-party system and store in vRO, Create a vRO action to return application values stored in vRO as "Properties", Create a Display drop-down custom property with external values and map it to the vRO action.
- C. Create a Display drop-down custom property with external values and provide AJAX call information to the third-party system.
- D. Design a schedule vRO workflow to read values from the third-party and store in vRO, Create a vRO action to return application values stored in vRO as "Array\String", Create a Display drop-down custom property with external values and map it to the vRO action.

Correct Answer: D

QUESTION 10

An architect is designing for the ability to deploy a maximum of 9,000 managed machines and 300 catalog items in a vRealize Automation (vRA) environment. Which vRA deployment method would meet this requirement while keeping the number of machines to a minimum?

- A. Extra Large
- B. Large
- C. Small
- D. Medium

Correct Answer: B

Reference: <https://docs.vmware.com/en/vRealize-Automation/7.5/com.vmware.vrA.install.upgrade.doc/GUIDABDEC762-5960-4B56-8A0C-CC25651EE95C.html>

QUESTION 11

Which design would allow for an infrastructure team to authorize all snapshots taken by vRealize Automation users?



- Design an approval policy for the Policy Type: Service Catalog - Resource Action Request - Create Snapshot - Virtual Machine.
- Ensure that the Approval Required = Any and that it is assigned to the infrastructure team.

- Design a custom XaaS workflow and add it to the provisioning blueprint.
- Configure the XaaS workflow to notify the infrastructure team on any 'Create Snapshot - Virtual Machine' request. The workflow waits for user input prior to running the Create Snapshot workflow.

- Design an Event Broker subscription that triggers on a 'Create Snapshot - Virtual Machine' event type.
- Configure the Event Broker workflow to send an email to the infrastructure team for notification before running a Create Snapshot workflow.

- Design an approval policy for the Policy Type: Service Catalog - Catalog Item Requests - Create Snapshot - Virtual Machine.
- Ensure that the Approval Required = All and that it is assigned to the infrastructure team.

A. Option A

B. Option B

C. Option C

D. Option D

Correct Answer: A

QUESTION 12

A company is developing its storage-as-a-service solution using vRealize Automation. It has created a security group that will be assigned to the engineers developing this solution. Following the principle of least privilege, which role should be associated with this security group?

- A. XaaS architect
- B. Catalog administrator
- C. Infrastructure architect
- D. Application architect
- E. Tenant administrator

Correct Answer: D

QUESTION 13

The architect for a vRealize Automation project met with the IT team and identified the following requirements:

1. Fine grained logging and monitoring of all events
- 2.



99.99% SLA of the custom portal

3.
Utilize built-in functionality
4.
HIPAA Compliance
5.
API calls to vRA and NSX
6.
Custom Portal
7.
Ability for 150 concurrent DEM workflows

To which infrastructure quality would the 'Ability for 150 concurrent DEM workflows' technical requirement map?

- A. Manageability
- B. Recoverability
- C. Security
- D. Performance

Correct Answer: D

QUESTION 14

An architect is expecting to run 25 to 30 concurrent workflows for provisioning in a vRealize Automation environment. Which is the minimum number of DEM workers needed to meet these requirements?

- A. 3
- B. 4
- C. 2
- D. 1

Correct Answer: C

QUESTION 15

An architect is tasked with designing a backup strategy for vRealize Orchestrator as part of an upcoming production rollout of a Cloud Management Platform. Which are two valid backup design recommendations? (Choose two.)



- A. If vRealize Orchestration is embedded within the vRealize Automation appliance, perform its backup along with Manager Services for vRealize Automation.
- B. Perform backup of vRealize Orchestrator virtual machines in the order of the startup priority.
- C. If vRealize Orchestrator is a standalone component, perform its backup before backing up vRealize Automation components in no particular order.
- D. Perform file-level backup of the Orchestrator database only after a successful full virtual machine backup.

Correct Answer: CD

Reference: <https://pubs.vmware.com/vrealize-suite-60/index.jsp?topic=%2Fcom.vmware.vrsuite6.0.backuprestore.doc%2FGUID-87A2DCE2-D8DB-4077-8FC2-8EAFB9AB46A5.html>

[3V0-732 PDF Dumps](#)

[3V0-732 VCE Dumps](#)

[3V0-732 Exam Questions](#)