



350-401^{Q&As}

Implementing and Operating Cisco Enterprise Network Core Technologies (ENCOR) & CCIE Enterprise Infrastructure & CCIE Enterprise Wireless





Pass Cisco 350-401 Exam with 100% Guarantee

Free Download Real Questions & Answers **PDF** and **VCE** file from:

<https://www.passapply.com/350-401.html>

100% Passing Guarantee
100% Money Back Assurance

Following Questions and Answers are all new published by Cisco Official Exam Center

-  **Instant Download** After Purchase
-  **100% Money Back** Guarantee
-  **365 Days** Free Update
-  **800,000+** Satisfied Customers





QUESTION 1

Refer to the exhibit.

```
router#debug ip packet detail 100
IP packet debugging is on (detailed) for access list 100
router#

12:11:05: IP: s=1.1.1.1 (Serial1/0), d=10.1.1.1 (Serial3/0),
g=10.1.1.1, len 100, forward
12:11:05:      ICMP type=0, code=0
12:11:05: IP: s=1.1.1.1 (Serial1/0), d=10.1.1.1 (Serial3/0),
g=10.1.1.1, len 100, forward
12:11:05:      ICMP type=0, code=0
12:11:05: IP: s=1.1.1.1 (Serial1/0), d=10.1.1.1 (Serial3/0),
g=10.1.1.1, len 100, forward
12:11:05:      ICMP type=0, code=0
```

A network engineer issues the debug command while troubleshooting a network issue. What does the output confirm?

- A. ACL 100 is tracking ICMP traffic from 10.1.1.1 destined for 1.1.1.1.
- B. ACL100 is tracking all traffic from 10.1.1.1 destined for 1.1.1.1.
- C. ACL100 is tracking ICMP traffic from Serial1/0 destined for Serial3/0.
- D. ACL100 is tracking ICMP traffic from 1.1.1.1 destined for 10.1.1.1.

Correct Answer: D

QUESTION 2

Refer to the exhibit.

A network engineer must simplify the IPsec configuration by enabling IPsec over GRE using IPsec profiles. Which two configuration changes accomplish this? (Choose two).



```
access-list 100 permit gre host 209.165.201.1 host 209.165.201.6

crypto isakmp policy 5
authentication pre-share
hash sha256
encryption aes
group 14

crypto isakmp key D@t@c3nt3r address 209.165.201.6

crypto ipsec transform-set My_Set esp-aes esp-sha-hmac
mode transport

crypto map MAP 10 ipsec-isakmp
set peer 209.165.201.6
set transform-set My_Set
match address 100

interface GigabitEthernet0/0
description outside_interface
no switchport
ip address 209.165.201.1 255.255.255.252
crypto map MAP

interface Tunnel100
ip address 192.168.100.1 255.255.255.0
ip mtu 1400
tunnel source GigabitEthernet0/0
tunnel destination 209.165.201.6

ip route 10.20.0.0 255.255.255.0 192.168.100.2 Tunnel100
```

```
access-list 100 permit gre host 209.165.201.6 host 209.165.201.1

crypto isakmp policy 5
authentication pre-share
hash sha256
encryption aes
group 14

crypto isakmp key D@t@c3nt3 address 209.165.201.1

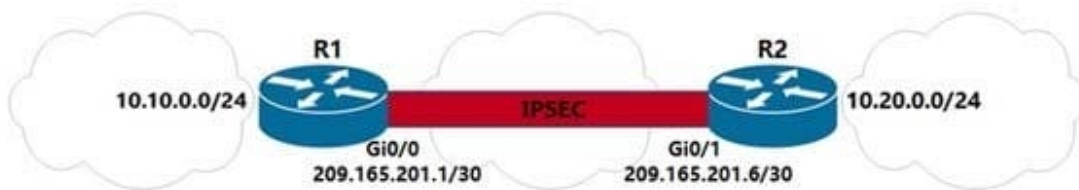
crypto ipsec transform-set My_Set esp-aes esp-sha-hmac
mode transport

crypto map MAP 10 ipsec-isakmp
set peer 209.165.201.1
set transform-set My_Set
match address 100

interface GigabitEthernet0/1
description outside_interface
no switchport
ip address 209.165.201.6 255.255.255.252
crypto map MAP

interface Tunnel100
ip address 192.168.100.2 255.255.255.0
ip mtu 1400
tunnel source GigabitEthernet0/1
tunnel destination 209.165.201.1

ip route 10.10.0.0 255.255.255.0 192.168.100.1 Tunnel100
```



- Create an IPsec profile, associate the transform-set ACL, and apply the profile to the tunnel interface.
- Apply the crypto map to the tunnel interface and change the tunnel mode to tunnel mode ipsec ipv4.
- Remove all configuration related to crypto map from R1 and R2 and eliminate the ACL.
- Create an IPsec profile, associate the transform-set, and apply the profile to the tunnel interface.
- Remove the crypto map and modify the ACL to allow traffic between 10.10.0.0/24 to 10.20.0.0/24.

Correct Answer: CD

A is wrong, you don't use a "transform-set ACL"

B is wrong. question states use IPsec profiles. Crypto maps was the old way of doing ipsec tunnels before profiles.

C is correct, need to remove crypto map config or it will cause some confusion if the tunnel profile is applied. Didn't lab it up, but book references this. D is correct, all you need to do is create a profile and associate the transform-set to this

profile, then apply it to the tunnel. If no transform set was created you would have to create one. E is wrong, i believe removing crypto map would cause the traffic to flow unencrypted over the tunnel. acl in this case is to match the interesting



traffic to be encrypted. it\\'s denying it.

QUESTION 3

Which two network problems indicate a need to implement QoS in a campus network? (Choose two)

- A. port flapping
- B. excess jitter
- C. misrouted network packets
- D. duplicate IP addresses
- E. bandwidth-related packet loss

Correct Answer: BE

QUESTION 4

Refer to the exhibit.



```
SW1#show cdp neighbors | include Local|0/1
Device ID      Local Intrfce  Holdtme  Capability Platform Port ID
SW2            Fas 0/1       131      R S WS-C3750- Fas 0/1

SW1#show interfaces FastEthernet0/1 switchport
Name: Fa0/1
Switchport: Enabled
Administrative Mode: dynamic desirable
Operational Mode: static access
Administrative Trunking Encapsulation: dot1q
Operational Trunking Encapsulation: native
Negotiation of Trunking: On

SW2#show cdp neighbors | include Local|0/1
Device ID      Local Intrfce  Holdtme  Capability Platform Port ID
SW1            Fas 0/1       142      R S WS-C3750- Fas 0/1

SW2#show interfaces FastEthernet0/1 switchport
Name: Fa0/1
Switchport: Enabled
Administrative Mode: dynamic desirable
Operational Mode: static access
Administrative Trunking Encapsulation: isl
Operational Trunking Encapsulation: native
Negotiation of Trunking: On
```

An engineer configures a trunk between SW1 and SW2 but tagged packets are not passing. Which action fixes the issue?

- A. Configure SW1 with dynamic auto mode on interface FastEthernet0/1.
- B. Configure the native VLAN to be the same VLAN on both switches on interface FastEthernet0/1.
- C. Configure SW2 with encapsulation dot1q on interface FastEthernet0/1.
- D. Configure FastEthernet0/1 on both switches for static trunking.

Correct Answer: C



QUESTION 5

Which design principle states that a user has no access by default to any resource, and unless a resource is explicitly granted, it should be denied?

- A. least privilege
- B. fail-safe defaults
- C. economy of mechanism
- D. complete mediation

Correct Answer: B

The Principle of Fail-Safe Defaults states that, unless a subject is given explicit access to an object, it should be denied access to that object

QUESTION 6

Which configuration filters out DOT1X messages in the format shown below from being sent toward Syslog server 10.15.20.33?

```
Nov 20 13:47:32/553 %DOT1X-5-FAIL:Authentication failed for client (e04f.438e.de4f) on interface Gi1/0/1  
AudiSessionID 0A0B50A5000004543910739E
```

- A. logging discriminator DOT1X facility drops DOT1X logging host 10.15.20.33 discriminator DOT1X
- B. logging discriminator DOT1X msg-body drops DOTX logging host 10.15.20.33 discriminator DOTX
- C. logging discriminator DOT1X mnemonics includes DOTX logging host 10.15.20.33 discriminator DOT1X
- D. logging discriminator DOT1X mnemonics includes DOT1X logging host 10.15.20.33 discriminator DOTX

Correct Answer: A

QUESTION 7

Refer to the exhibit. What happens to access interfaces where VLAN 222 is assigned?



```
vlan 222
  remote-span
!
vlan 223
  remote-span
!
monitor session 1 source interface FastEthernet0/1 tx
monitor session 1 source interface FastEthernet0/2 rx
monitor session 1 source interface port-channel 5
monitor session 1 destination remote vlan 222
!
```

- A. STP BPDU guard is enabled
- B. A description "RSPAN" is added
- C. They are placed into an inactive state
- D. They cannot provide PoE

Correct Answer: C

QUESTION 8

An engineer configures a WLAN with fast transition enabled. Some legacy clients fail to connect to this WLAN.

Which feature allows the legacy clients to connect while still allowing other clients to use fast transition based on the OLTs?

- A. over the DS
- B. adaptive R
- C. 802.11V
- D. 802.11k

Correct Answer: B

QUESTION 9

Which protocol is responsible for data plane forwarding in a Cisco SD-Access deployment?

- A. VXLAN



- B. IS-IS
- C. OSPF
- D. LISP

Correct Answer: A

In SD-Access the control plane is based on LISP (Locator/ID Separation Protocol), the data plane is based on VXLAN (Virtual Extensible LAN), the policy plane is based on Cisco TrustSec, and the management plane is enabled and powered

by Cisco DNA Center.

[https://www.cisco.com/c/en/us/td/docs/solutions/CVD/Campus/cisco-sda-design-guide.html#:~:text=In%20SD%](https://www.cisco.com/c/en/us/td/docs/solutions/CVD/Campus/cisco-sda-design-guide.html#:~:text=In%20SD%20)

QUESTION 10

How do EIGRP metrics compare to OSPF metrics?

- A. EIGRP metrics are based on a combination of bandwidth and packet loss, and OSPF metrics are based on interface bandwidth.
- B. EIGRP uses the Dijkstra algorithm, and OSPF uses The DUAL algorithm
- C. The EIGRP administrative distance for external routes is 170. and the OSPF administrative distance for external routes is undefined
- D. The EIGRP administrative distance for external routes is 170. and the OSPF administrative distance for external routes is 110

Correct Answer: A

QUESTION 11

Which protocol does REST API rely on to secure the communication channel?

- A. TCP
- B. HTTPS
- C. SSH
- D. HTTP

Correct Answer: B

The REST API accepts and returns HTTP (not enabled by default) or HTTPS messages that contain JavaScript Object Notation (JSON) or Extensible Markup Language (XML) documents. You can use any programming language to generate the messages and the JSON or XML documents that contain the API methods or Managed Object (MO) descriptions. Reference: https://www.cisco.com/c/en/us/td/docs/switches/datacenter/aci/apic/sw/2-x/rest_cfg/2_1_x/b_Cisco_APIC_REST_API_Configuration_Guide/b_Cisco_APIC_REST_API_Configuration_Guide_chapter_01.html



QUESTION 12

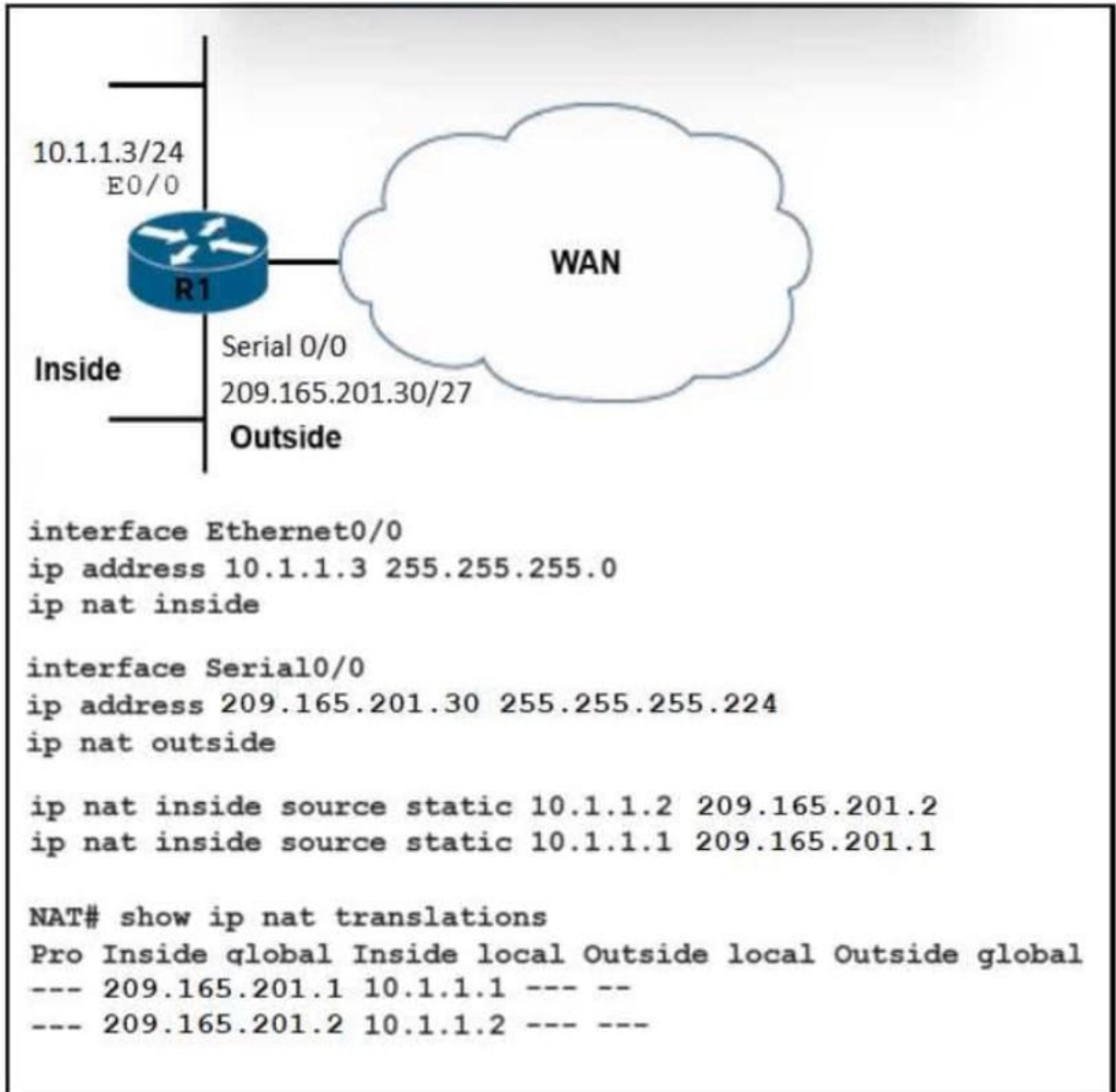
Which character formatting is required for DHCP Option 43 to function with current AP models?

- A. MD5
- B. Base64
- C. ASCII
- D. Hex

Correct Answer: C

QUESTION 13

Refer to the exhibit.



What are two results of the NAT configuration? (Choose two.)

- A. Packets with a destination of 200.1.1.1 are translated to 10.1.1.1 or .2. respectively.
- B. A packet that is sent to 200.1.1.1 from 10.1.1.1 is translated to 209.165.201.1 on R1.
- C. R1 looks at the destination IP address of packets entering S0/0 and destined for inside hosts.
- D. R1 processes packets entering E0/0 and S0/0 by examining the source IP address.
- E. R1 is performing NAT for inside addresses and outside address.

Correct Answer: BC



QUESTION 14

A Cisco DNA Center REST API sends a PUT to the /dna/intent/api/v1/network-device endpoint A response code of 504 is received What does the code indicate?

- A. The response timed out based on a configured interval
- B. The user does not have authorization to access this endpoint.
- C. The username and password are not correct
- D. The web server is not available

Correct Answer: A

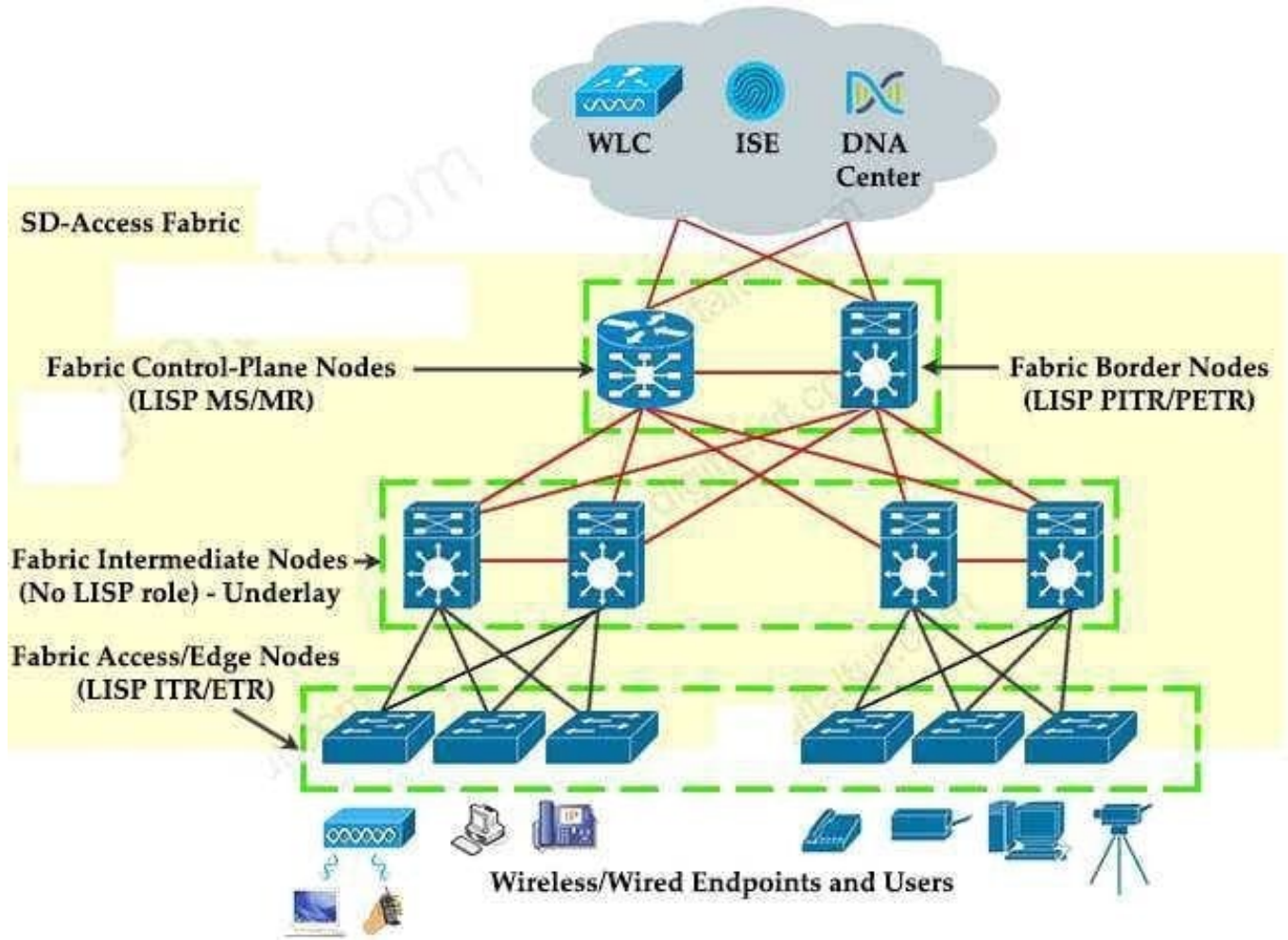
QUESTION 15

In an SD-Access solution what is the role of a fabric edge node?

- A. to connect external Layer 3- network to the SD-Access fabric
- B. to connect wired endpoint to the SD-Access fabric
- C. to advertise fabric IP address space to external network
- D. to connect the fusion router to the SD-Access fabric

Correct Answer: B

+ Fabric edge node: This fabric device (for example, access or distribution layer device) connects wired endpoints to the SDA fabric.



[350-401 Practice Test](#)

[350-401 Study Guide](#)

[350-401 Braindumps](#)