



350-080^{Q&As}

CCIE Data Center Written

Pass Cisco 350-080 Exam with 100% Guarantee

Free Download Real Questions & Answers **PDF** and **VCE** file from:

<https://www.passapply.com/350-080.html>

100% Passing Guarantee
100% Money Back Assurance

Following Questions and Answers are all new published by Cisco
Official Exam Center

-  **Instant Download** After Purchase
-  **100% Money Back** Guarantee
-  **365 Days** Free Update
-  **800,000+** Satisfied Customers





QUESTION 1

Refer to the exhibit.



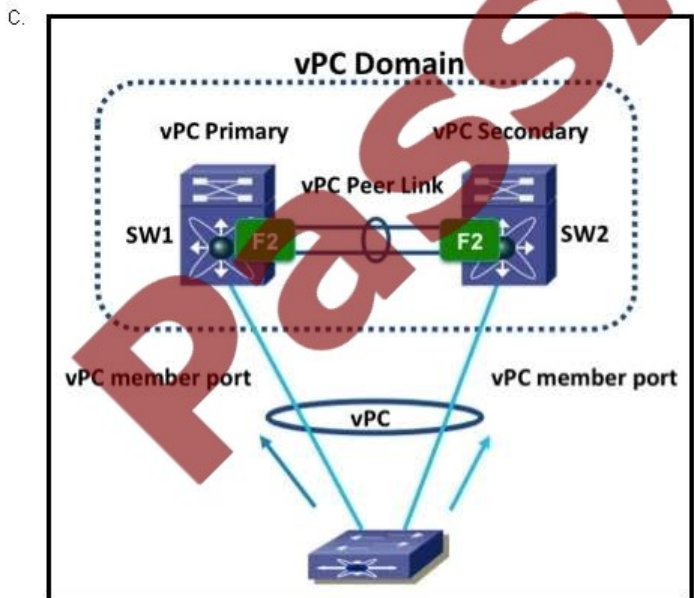
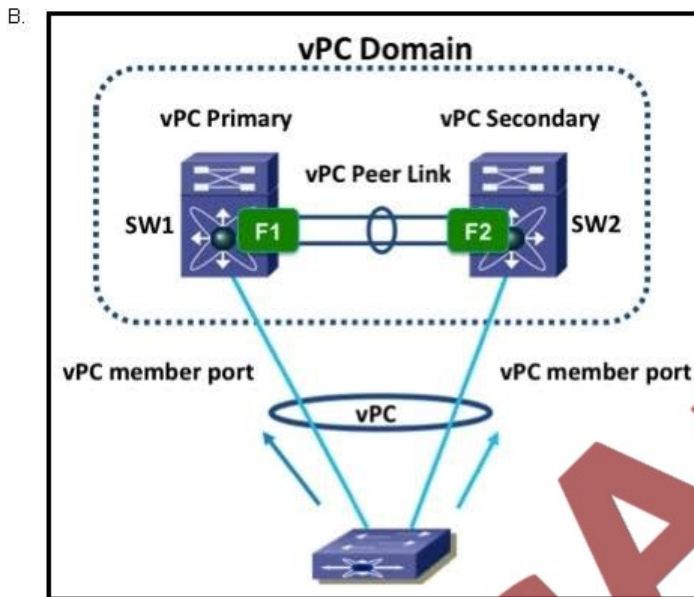
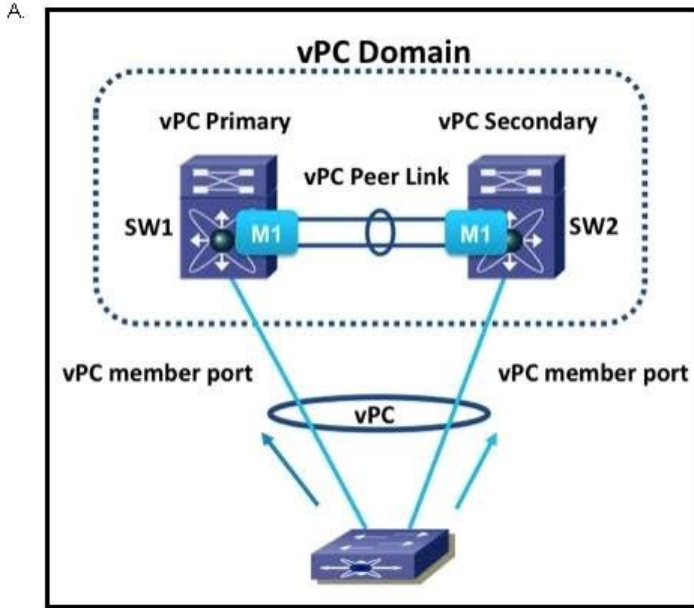
You are configuring a UCS C-Series server for SAN boot over FCoE. The server fails to boot after the HBA option ROM loads. Which option describes the most likely solution for this problem?

- A. Decrease the vNIC MTU.
- B. Set the vNIC Class of Service to a nonzero value.
- C. Set the default VLAN to FCOE VLAN.
- D. Set the vHBA Class of Service to 2.
- E. Uncheck the PXE Boot option.
- F. Disable Persistent LUN Binding.

Correct Answer: C

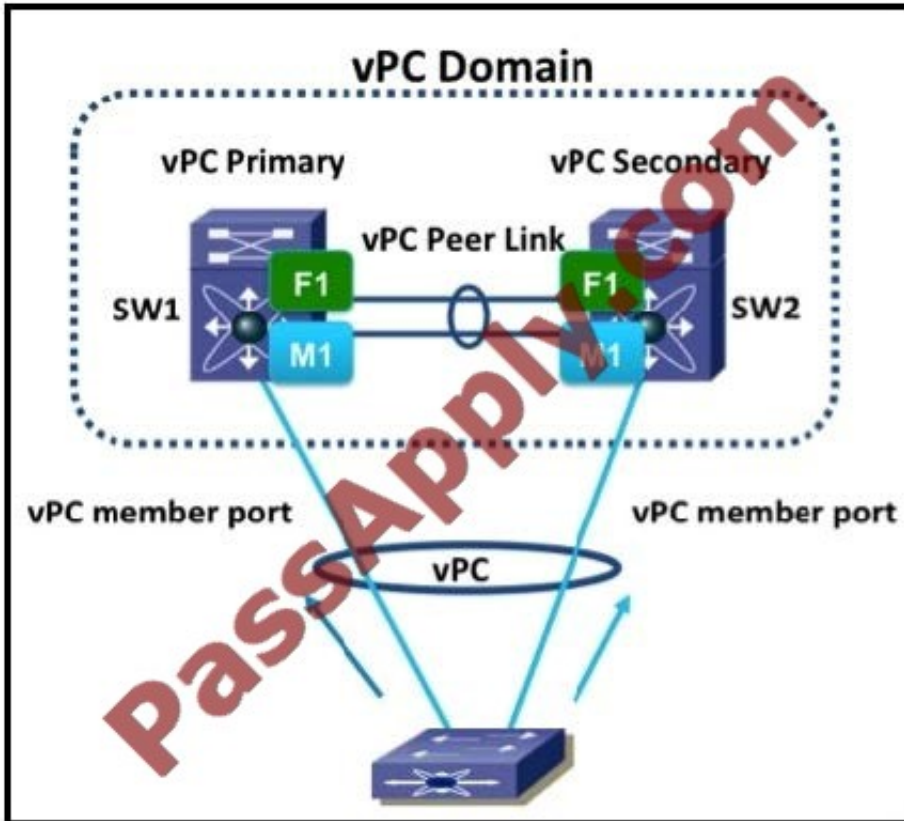
QUESTION 2

In a Cisco Nexus 7000 switch with both M1 and F1 modules, which two topologies are valid vPC topologies? (Choose two) A. Exhibit A





A. B. C.



- D.
- B. Exhibit B
- C. Exhibit C
- D. Exhibit D

Correct Answer: AC

QUESTION 3

Refer to the exhibit.

```
UCS-B# scope eth-uplink
UCS-B /eth-uplink # scope fabric b
UCS-B /eth-uplink/fabric # create interface 2 1
UCS-B /eth-uplink/fabric/interface* # commit-buffer
```

Assume that the Cisco UCS 6200 Series Fabric Interconnects are equipped with 16 port expansion modules. What is the impact of the last command in the exhibit?

- A. Fabric interconnect B will reboot.



- B. The expansion module on fabric interconnect B will reload.
- C. The command will generate an error.
- D. Both fabric A and B expansion modules will reload.
- E. The expansion module on fabric interconnect B will reload according to the maintenance policy that is set by Cisco UCS Manager.

Correct Answer: C

QUESTION 4

In the Cisco Nexus 7000 FabricPath domain, one switch becomes the root for the multideestination tree. Cisco FabricPath IS-IS will automatically select root switches for each multideestination tree. One of the parameters that is used to select the root is the system ID. Which two statements are true about the system ID? (Choose two.)

- A. The system ID is a unique 12-bit value.
- B. The system ID is a 48-bit value composed of the VDC MAC address.
- C. A higher system ID is preferred.
- D. A lower system ID is preferred.

Correct Answer: BC

QUESTION 5

A network administrator has installed an N7K-F248-25XP module into an existing chassis. The module is powered on, but the interfaces are all in VDC0. What is the reason for this?

- A. The chassis needs an EPLD upgrade to support the new module type.
- B. The default VDC cannot support F2 modules.
- C. The interfaces must be allocated into a VDC for F2 modules only.
- D. The module has failed GOLD diagnostics, and the switch has isolated the ports to protect the integrity of the system.

Correct Answer: C

QUESTION 6

After configuring FabricPath, the following message appears in the syslog:

```
%STP-2-L2GW_BACKBONE_BLOCK: L2 Gateway Backbone port inconsistency blocking port port-channel100 on VLAN0010.
```

What is a possible reason for this message?



- A. Spanning tree must be disabled, and the message indicates that STP is enabled.
- B. STP is misconfigured. The root guard must be disabled.
- C. An inferior BPDU was received on a Cisco FabricPath edge port.
- D. A superior BPDU was received on a Cisco FabricPath edge port.

Correct Answer: D

QUESTION 7

What tasks can only be performed in the default or admin VDC?

- A. EPLD upgrade, IOS ISSU, FcoE feature enablement, CoPP configuration, and rolling back a checkpoint
- B. EPLD upgrade, Cisco IOS ISSU, FCoE feature enablement, CoPP configuration, and ACL capture enablement
- C. EPLD upgrade, Cisco IOS ISSU, FCoE feature enablement, CoPP configuration and SNMP configuration
- D. EPLD upgrade, Cisco IOS ISSU, FCoE feature enablement, CoPP configuration, and write erase

Correct Answer: B

QUESTION 8

Select and Place:

Drag the configurations that could fail without data loss from the left and drop them in the '1 Drive Lost' list on the right. Not all options will be used.

two drives in RAID0	1 Drive Lost
four drives in RAID1	
three drives in RAID5	
four drives in RAID6	
six drives in RAID10	

Correct Answer:

Drag the configurations that could fail without data loss from the left and drop them in the '1 Drive Lost' list on the right. Not all options will be used.

four drives in RAID1	1 Drive Lost
four drives in RAID6	
six drives in RAID10	
two drives in RAID0	
three drives in RAID5	



QUESTION 9

Refer to the exhibit.

```

FI6248-B# connect adapter 1/2/1
adapter 1/2/1 # connect
adapter 1/2/1 (top):1# attach-mcp
adapter 1/2/1 (mcp):1# vnic
<snip>
-----
id  name          v n i c          l i f          v i f
   name          type          bb:dd:f state lif state uif  ucsn  idx  vlan state
-----
 5 vnic_1          enet          INIT          2 INIT =>0   992   -1   0  INIT
 6 vnic_2          enet          INIT          3 INIT =>1   993   -1   0  INIT
 7 vnic_3          enet          INIT          4 INIT =>0  1013   -1   0  INIT
 8 vnic_4          fc            UP            5 UP   =>0   994  3733  100 UP
 9 vnic_5          fc            UP            6 UP   =>1   995  3659  400 UP
-----

```

Which option describes the output that is shown in bold in the exhibit?

- A. This output represents a standby VIF.
- B. This output indicates that fabric failover has been enabled on vNIC 3.
- C. This output represents a reserved system VIF.
- D. This output represents an unpinned interface.

Correct Answer: A

QUESTION 10

What is the benefit of using Anycast RP via RFC 4610 for IP multicast RP redundancy?

- A. Improves convergence of the multicast network due to enhanced RPF checks
- B. Simplifies the number of control plane protocols over other RP redundancy methods
- C. Eliminates the use of Protocol Independent Multicast (PIM) in the topology
- D. Increases the administrative distances in Multicast Source Discovery Protocol (MSDP) configuration

Correct Answer: B

QUESTION 11

Which statement best describes the Cisco Nexus 1000V Series?



- A. The Cisco Nexus 1000V Series provides Layer 2 switching, advanced networking functions, and a common network management model in a virtualized server environment.
- B. The Cisco Nexus 1000V Series provides Layer 3 switching, advanced networking functions, and a common network management model in a virtualized server environment.
- C. The Cisco Nexus 1000V Series provides Layer 2 and Layer 3 switching, advanced networking functions, and a common network management model in a virtualized server environment.
- D. The Cisco Nexus 1000V Series provides Layer 2 and Layer 3 switching but does not provide advanced networking functions or a common network management model in a virtualized server environment.

Correct Answer: A

QUESTION 12

What is the use of NPV in Cisco Unified Computing Systems? (Choose two.)

- A. Compatibility with third-party Fibre Channel switches
- B. Faster throughput
- C. Reduce domain IDs in a Fibre Channel environment
- D. Support for increased number of VSANs
- E. Support for SAN port channels

Correct Answer: AC

[Latest 350-080 Dumps](#)

[350-080 Practice Test](#)

[350-080 Exam Questions](#)



To Read the [Whole Q&As](#), please purchase the [Complete Version](#) from [Our website](#).

Try our product !

100% Guaranteed Success
100% Money Back Guarantee
365 Days Free Update
Instant Download After Purchase
24x7 Customer Support
Average 99.9% Success Rate
More than 800,000 Satisfied Customers Worldwide
Multi-Platform capabilities - [Windows](#), [Mac](#), [Android](#), [iPhone](#), [iPod](#), [iPad](#), [Kindle](#)

We provide exam PDF and VCE of Cisco, Microsoft, IBM, CompTIA, Oracle and other IT Certifications. You can view Vendor list of All Certification Exams offered:

<https://www.passapply.com/allproducts>

Need Help

Please provide as much detail as possible so we can best assist you.
To update a previously submitted ticket:



 <p>One Year Free Update Free update is available within One Year after your purchase. After One Year, you will get 50% discounts for updating. And we are proud to boast a 24/7 efficient Customer Support system via Email.</p>	 <p>Money Back Guarantee To ensure that you are spending on quality products, we provide 100% money back guarantee for 30 days from the date of purchase.</p>	 <p>Security & Privacy We respect customer privacy. We use McAfee's security service to provide you with utmost security for your personal information & peace of mind.</p>
---	---	--

Any charges made through this site will appear as Global Simulators Limited.
All trademarks are the property of their respective owners.
Copyright © passapply, All Rights Reserved.