



300-630^{Q&As}

Implementing Cisco Application Centric Infrastructure - Advanced
(DCACIA)

Pass Cisco 300-630 Exam with 100% Guarantee

Free Download Real Questions & Answers **PDF** and **VCE** file from:

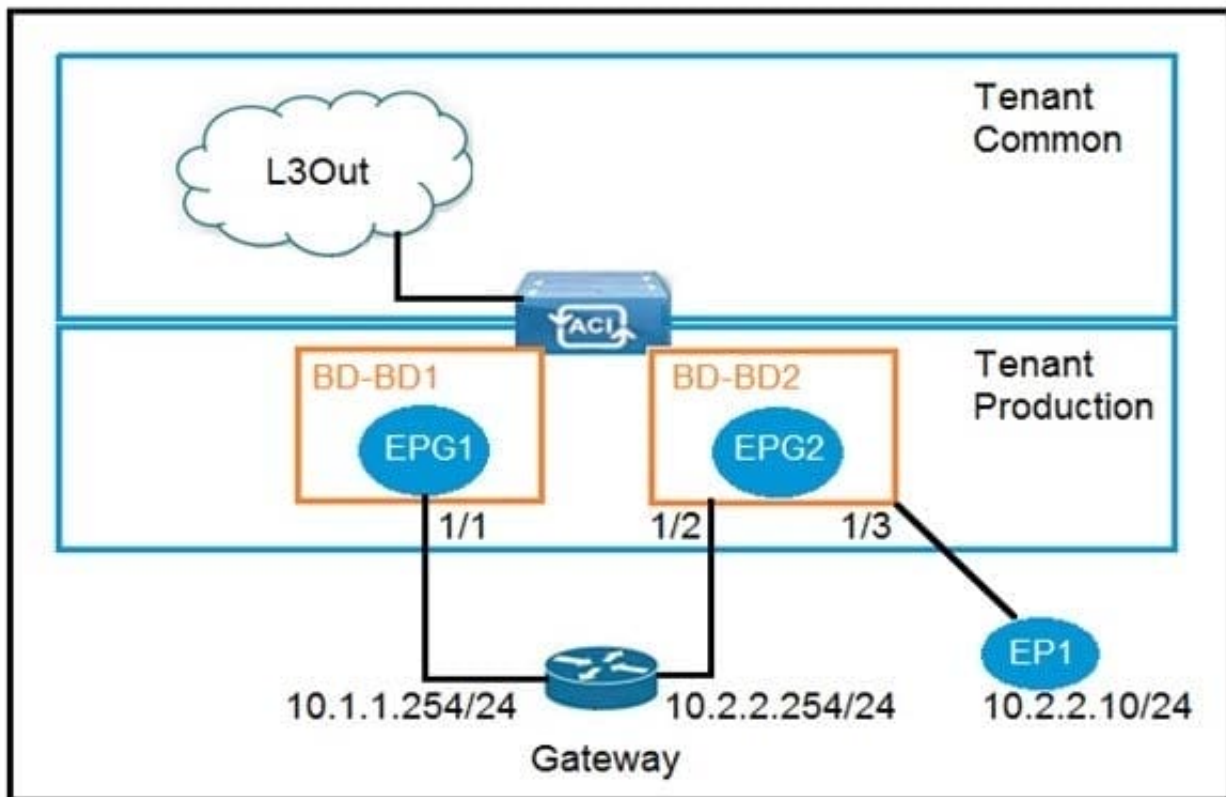
<https://www.passapply.com/300-630.html>

100% Passing Guarantee
100% Money Back Assurance

Following Questions and Answers are all new published by Cisco
Official Exam Center

- ⚙️ **Instant Download** After Purchase
- ⚙️ **100% Money Back** Guarantee
- ⚙️ **365 Days** Free Update
- ⚙️ **800,000+** Satisfied Customers



**QUESTION 1**

Refer to the exhibit. An engineer wants to avoid connectivity problems for the endpoint EP1 when it reaches an external L3Out network through the gateway 10.2.2.254/24. Which two configurations must be implemented in BD-BD2? (Choose two.)

- A. Disable unicast routing
- B. Enable IP data plane learning for the VRF
- C. Disable ARP flooding
- D. Enable ARP flooding
- E. Enable unicast routing

Correct Answer: AC

QUESTION 2

An engineer is implementing the Cisco ACI fabric but is experiencing loops detected from endpoints. When the issue was investigated, it was discovered that the packets are received with the same source IP address but from different leaf switch ports. The engineer must prevent the issue from happening in the future and make sure that the port is brought back up if it was disabled due to the loop discovered. Which set of actions must be taken to meet these requirements?



- A. Enable the enforce endpoint check and set the Rouge EP detection interval
- B. Enable the rogue endpoint and set the Error Disabled Recovery Policy
- C. Enable the remote endpoint limit and set the Interface override
- D. Enable reverse path forwarding and set the Hold Interval

Correct Answer: B

QUESTION 3

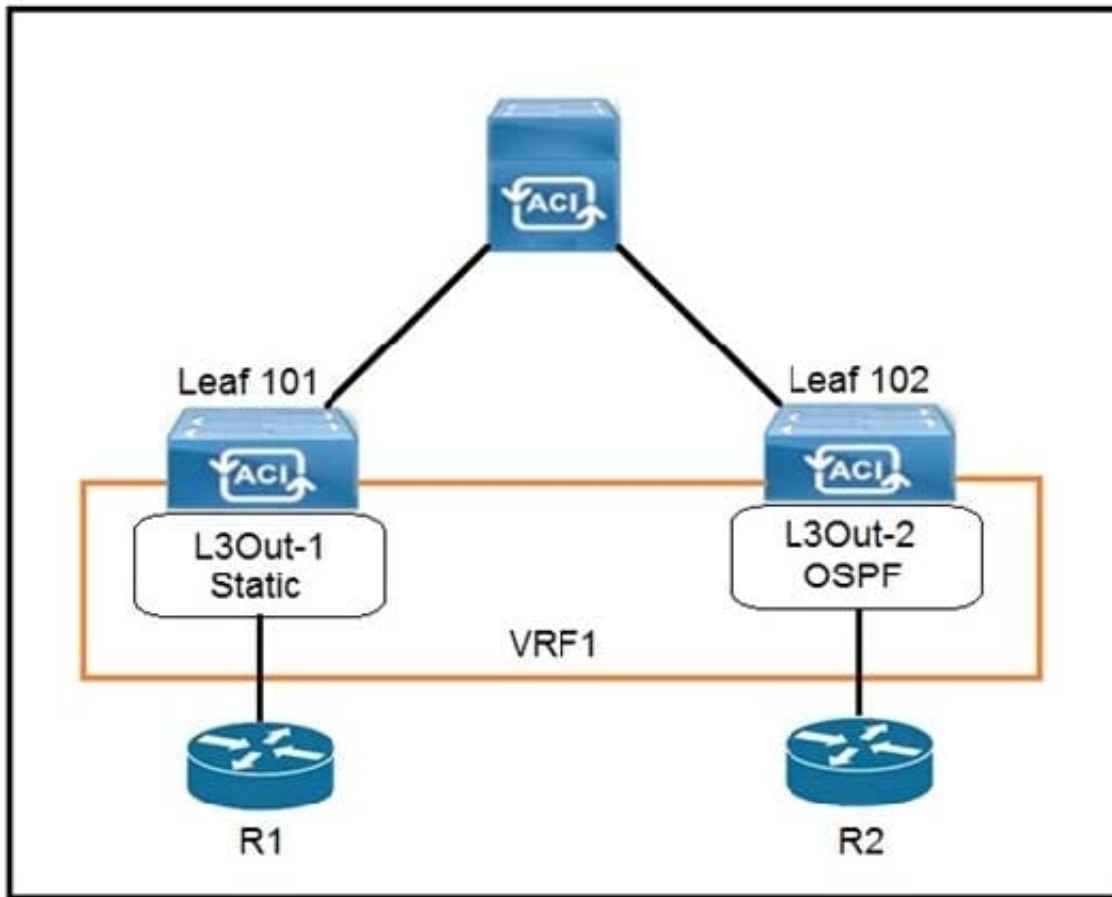
What are two characteristics of Cisco ACI and Spanning Tree Protocol interaction? (Choose two.)

- A. When a TCN BPDU is received in a VLAN, Cisco ACI flushes the endpoints for the associated encapsulation.
- B. STP BPDUs are dropped due to MCP.
- C. MST BPDUs are flooded correctly in Cisco ACI fabric without additional configuration.
- D. BPDU filter and BPDU guard can be configured on Cisco ACI leaf edge ports.
- E. Cisco ACI must be configured as the STP root for all VLANs.

Correct Answer: DE

Reference: https://www.cisco.com/c/en/us/td/docs/switches/datacenter/aci/aci_virtual_edge/configuration/1-x/b_Virtual_Edge_Config_Guide_1_2_2/b_Virtual_Edge_Config_Guide_1_2_2_chapter_0101.html

QUESTION 4



Refer to the exhibit. The 0.0.0.0/0 is configured as a default static route on L3Out-1. Which action should be taken for the 0.0.0.0/0 prefix to advertise out on L3Out-2 OSPF?

- A. Enable Shared Security Import Subnet
- B. Enable Aggregate Export Subnet
- C. Enable Shared Route Control Subnet
- D. Enable Export Route Control Subnet

Correct Answer: B

QUESTION 5

What is a use of the Overlay Multicast TEP in Cisco ACI Multi-Site communication?

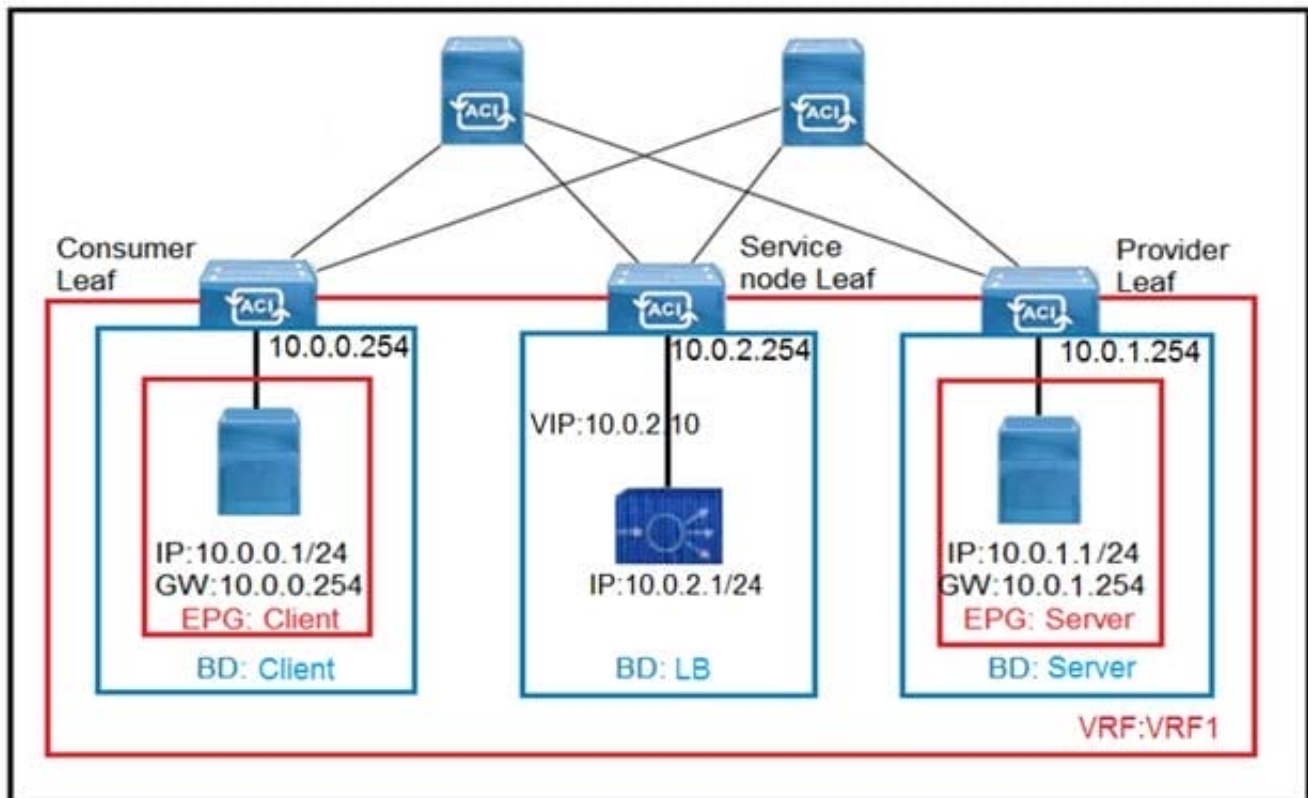
- A. to perform headend replication
- B. to act as the source IP for BUM traffic
- C. to establish MP-BGP adjacencies with remote spines
- D. to send and receive unicast VXLAN data plane traffic



Correct Answer: B

Reference: <https://www.cisco.com/c/en/us/solutions/collateral/data-center-virtualization/application-centric-infrastructure/white-paper-c11-739609.html#CiscoACIMultiSiteoverlaydataplane>

QUESTION 6



Refer to the exhibit. The client endpoint uses the load-balancer VIP as the destination address to send traffic to the server endpoint. If the load balancer does not do source NAT, which set of configurations must be applied on Cisco ACI to allow only the return traffic to be redirected to the service node?

A. 1. Create a contract with a filter matching "IP" only

2.

Create a L4-L7 device, function type "GoTo"

3.

Create a L4-L7 Policy-Based Redirect Policy with the L3 Destination set to the load-balancer inside IP/MAC

4.

Create a service graph template that references the previously created contract and L4-L7 device

5.

Apply the service graph template. Select "L3 Destination" and reference L4-L7 Policy-Based Redirect Policy on the



provider connector only

B. 1. Create a contract linked to the common/default filter

2.

Create a L4-L7 device, function type "GoThrough"

3.

Create a L4-L7 Policy-Based Redirect Policy with the L3 Destination set to the load-balancer inside IP/MAC

4.

Create a service graph template that references the previously created contract and L4-L7 device

5.

Apply the service graph template. Select "L3 Destination" and reference L4-L7 Policy-Based Redirect Policy on the consumer and provider connector

C. 1. Create a contract linked to the common/default filter

2.

Create a L4-L7 device, function type "GoTo"

3.

Create a L4-L7 Policy-Based Redirect Policy with "Anycast Endpoint" enabled and the L3 Destination set to the load-balancer inside IP/MAC

4.

Create a service graph template that references the previously created contract and L4-L7 device

5.

Apply the service graph template. Select "L3 Destination" and reference L4-L7 Policy-Based Redirect Policy on the consumer connector only

D. 1. Create a contract with a filter matching "IP" only

2.

Create a L4-L7 device, function type "GoThrough"

3.

Create a L4-L7 Policy-Based Redirect Policy with "Anycast Endpoint" enabled and the L3 Destination set to the load-balancer inside IP/MAC

4.

Create a service graph template that references the previously created contract and L4-L7 device

5.



Apply the service graph template. Select “L3 Destination” and reference L4-L7 Policy-Based Redirect Policy on the consumer and provider

Correct Answer: D

QUESTION 7

In a Cisco ACI Multi-Site fabric, the Inter-Site BUM Traffic Allow option is enabled in a specific stretched bridge domain. What is used to forward BUM traffic to all endpoints in the same broadcast domain?

- A. ingress replication on the spines in the source site
- B. egress replication on the source leaf switches
- C. egress replication on the destination leaf switches
- D. ingress replication on the spines in the destination site

Correct Answer: D

Reference: <http://yves-louis.com/DCI/?p=1277>

QUESTION 8

As part of a newly deployed ACI fabric, a pair of border leaf switches have been deployed to provide shared services for all tenants. The configured L3Out runs OSPF as the routing protocol. The requirement is to advertise the routes from the border leaf switches to the compute leaf switches. Which configuration must be implemented to meet these requirements?

- A. Configure a BGP route reflector policy for the Cisco ACI pod
- B. Define the shared L3Out in the common tenant
- C. Enable Import Route Control Enforcement in the L3Out policy
- D. Define the consumer subnet under the consumer EPG

Correct Answer: A

Reference: <https://www.cisco.com/c/en/us/solutions/collateral/data-center-virtualization/application-centric-infrastructure/guide-c07-743150.html>

QUESTION 9

DRAG DROP

Drag and drop the tenant implementation designs from the left onto the outcomes of the design when a greenfield Cisco ACI fabric is deployed on the right.



Select and Place:

Answer Area

VRF configured in common tenant; BDs and EPGs configured in dedicated tenants.	One organization without RBAC requirements owns all of the configuration.
VRF and BDs configured in common tenant; EPGs configured in user tenants.	Different organizations can have overlapping subnets.
VRF, BD, and EPG configured in common tenant.	Organizations use different tenants and share the same subnets.
VRF, BD, and EPG configured in user tenants.	Each organization has access only to dedicated resources, tied into RBAC rules.

Correct Answer:

Answer Area

	VRF, BD, and EPG configured in user tenants.
	VRF, BD, and EPG configured in common tenant.
	VRF configured in common tenant; BDs and EPGs configured in dedicated tenants.
	VRF and BDs configured in common tenant; EPGs configured in user tenants.

QUESTION 10

DRAG DROP

An engineer must migrate servers from a legacy data center infrastructure to a Cisco ACI fabric. Drag and drop the steps from the left into the order that they must be completed on the right to ensure the least amount of downtime.



Select and Place:

Answer Area

Extend Layer 2 connectivity from the legacy infrastructure to Cisco ACI. Move servers from the legacy infrastructure to Cisco ACI leaf switches	Step 1
Shut SVI on the legacy infrastructure and enable bridge domain unicast routing on Cisco ACI	Step 2
Decommission the legacy infrastructure	Step 3
Configure Cisco ACI: Define access policies, tenants, and bridge domain with unicast routing disabled. Map each VLAN to an EPG.	Step 4

Correct Answer:



Answer Area

Shut SVI on the legacy infrastructure and enable bridge domain unicast routing on Cisco ACI

Configure Cisco ACI: Define access policies, tenants, and bridge domain with unicast routing disabled. Map each VLAN to an EPG.

Extend Layer 2 connectivity from the legacy infrastructure to Cisco ACI. Move servers from the legacy infrastructure to Cisco ACI leaf switches

Decommission the legacy infrastructure

QUESTION 11

What is a design implication for Cisco ACI using an application-centric approach?

- A. Multiple VLANs and/or multiple EPGs are under one bridge domain
- B. VLAN numbers are in the names of the bridge domain and EPG objects
- C. One EPG is mapped to multiple bridge domains
- D. One VLAN equals one EPG equals one bridge domain

Correct Answer: C

QUESTION 12

How is broadcast forwarded in Cisco ACI Multi-Pod after ARP flooding is enabled?

- A. For the specific bridge domain, all spines forward the broadcast frames to IPN routers
- B. Broadcast frames are forwarded inside the pod and across the IPN using the multicast address that is associated to the bridge domain



- C. Within a pod, the ingress leaf switch floods the broadcast frame on all fabric ports
- D. Ingress replication is used on the spines to forward broadcast frames in the IPN infrastructure

Correct Answer: A

QUESTION 13

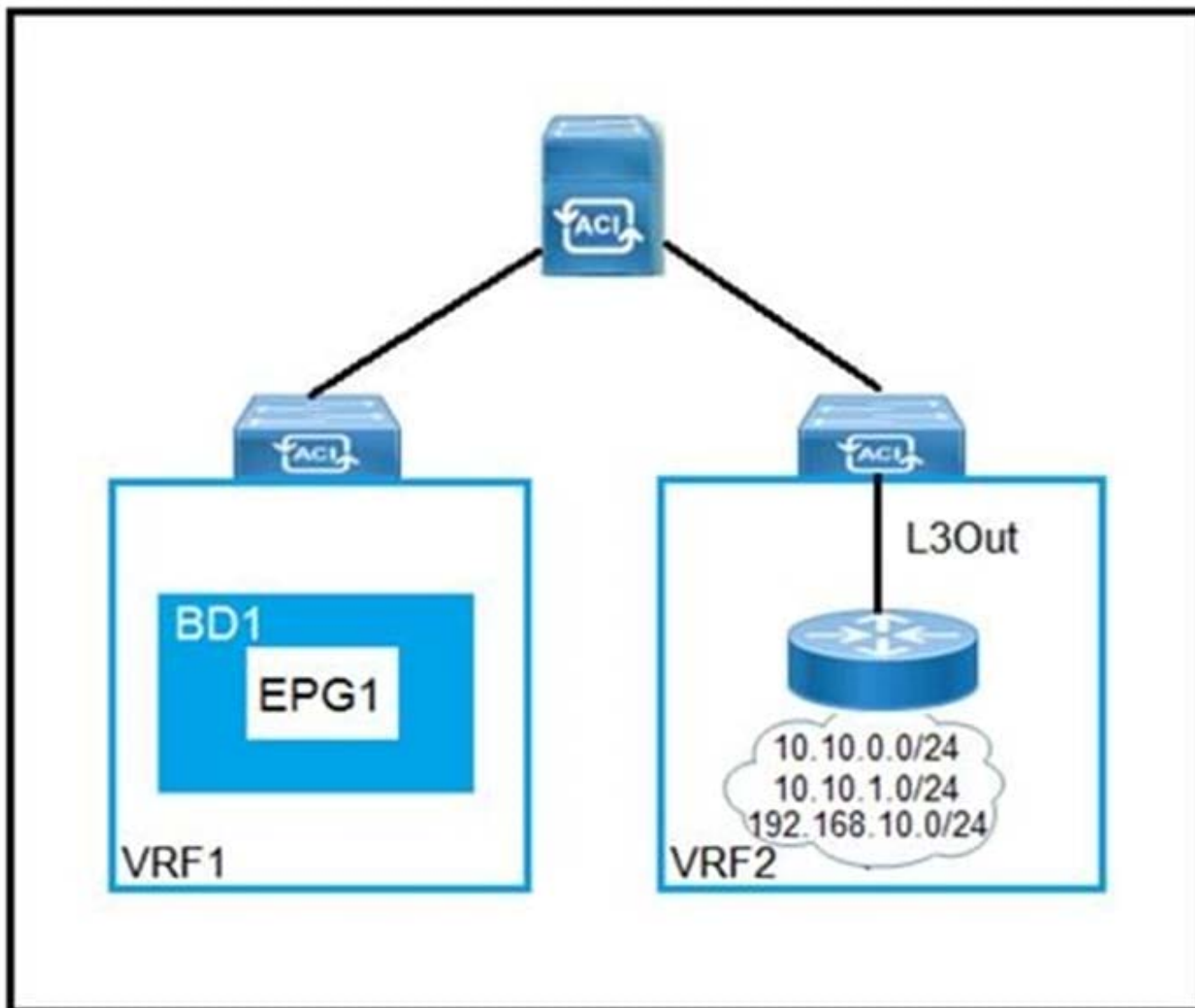
A network engineer configured an active-active firewall cluster that is stretched across separate pods in the Cisco ACI fabric. Which two implementation setups for anycast services are available? (Choose two.)

- A. Modify the Cisco ACI contract scope
- B. Modify the MAC address on the second firewall
- C. Configure the firewalls behind an EPG subnet
- D. Deselect No Default SVI Gateway under EPG Subnet
- E. Deploy a Layer 4 to Layer 7 service graph with PBR

Correct Answer: BC

QUESTION 14

DRAG DROP



Refer to the exhibit. Drag and drop the subnets and flags from the left into the External Network Instance Profile policies on the right to create a setup that advertises only 10.10.0.0/24 and 10.10.1.0/24 prefixes in VRF1 and establishes connectivity between VRFs. Not all options are used.

Select and Place:



Answer Area

10.10.0.0/16	IP Address
10.10.0.0/23	IP Address
0.0.0.0/0	Scope
External Subnets for the External EPG	Scope 1
Export Route Control Subnet	Scope 2
Shared Route Control Subnet	Scope 3
Import Route Control Subnet	Aggregate
Shared Security Import Subnet	Aggregate
Aggregate Export	
Aggregate Import	
Aggregate Shared	

Correct Answer:

**Answer Area**

	IP Address
10.10.0.0/23	10.10.0.0/16
0.0.0.0/0	Scope
	Shared Route Control Subnet
Export Route Control Subnet	Shared Security Import Subnet
	External Subnets for the External EPG
Import Route Control Subnet	Aggregate
	Aggregate Shared
Aggregate Export	
Aggregate Import	

QUESTION 15

A cloud provider must make a pair of firewalls available to all tenants. Each tenant defines its own service graph. Where should the Layer 4 to Layer 7 service be configured to accomplish this goal?

- A. management tenant
- B. infrastructure tenant
- C. user tenant



D. common tenant

Correct Answer: C

[Latest 300-630 Dumps](#)

[300-630 PDF Dumps](#)

[300-630 Exam Questions](#)