



2V0-621^{Q&As}

VMware Certified Professional 6 – Data Center Virtualization

Pass VMware 2V0-621 Exam with 100% Guarantee

Free Download Real Questions & Answers **PDF** and **VCE** file from:

<https://www.passapply.com/2v0-621.html>

100% Passing Guarantee
100% Money Back Assurance

Following Questions and Answers are all new published by VMware
Official Exam Center

- ⚙ **Instant Download** After Purchase
- ⚙ **100% Money Back** Guarantee
- ⚙ **365 Days** Free Update
- ⚙ **800,000+** Satisfied Customers





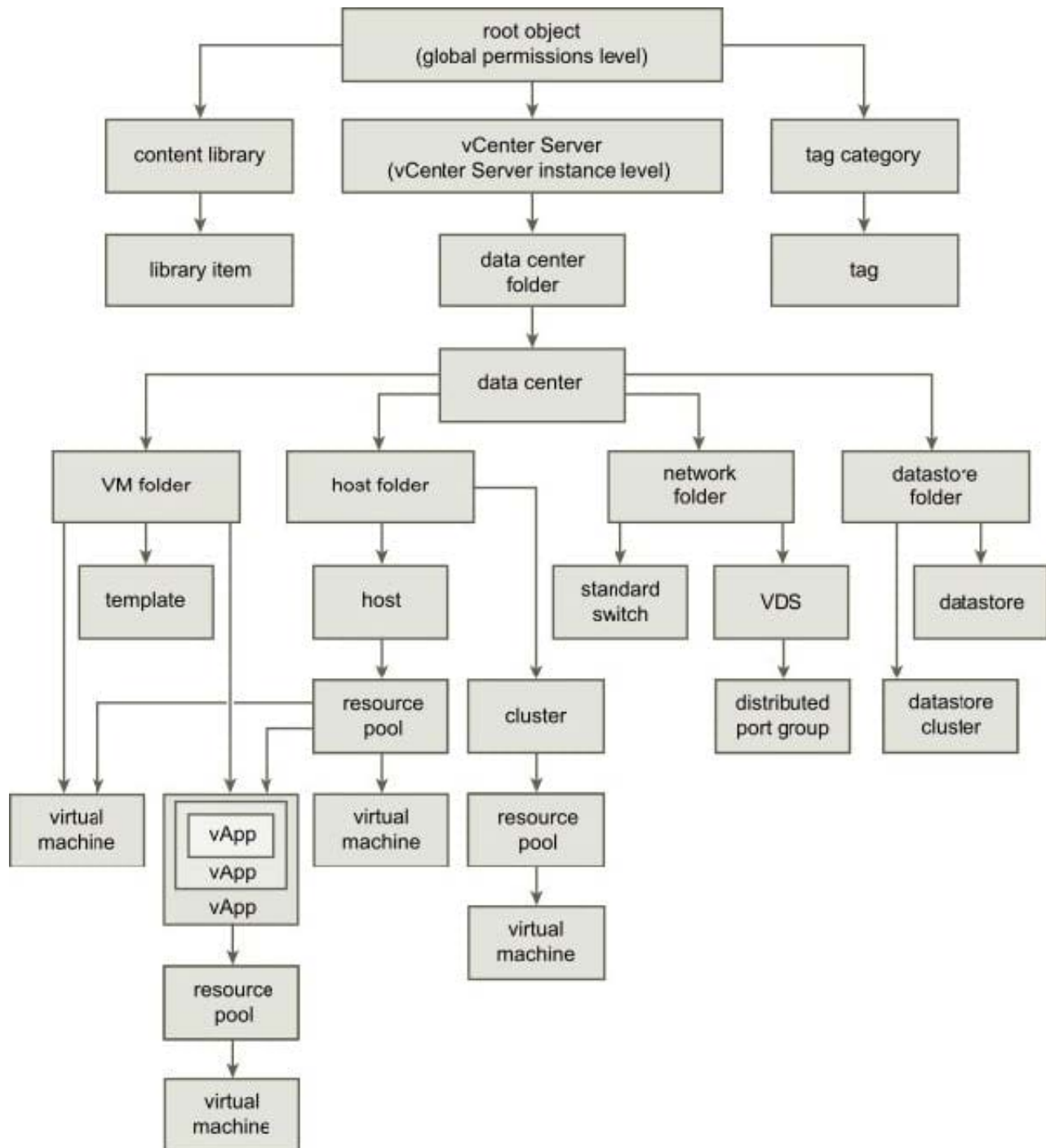
QUESTION 1

A user notifies an administrator that Content Libraries are not visible.

What is a possible solution?

- A. Assign the user the read-only role at the global permission level.
- B. Assign the user the read-only role at the vCenter Server root level.
- C. Assign the user the read-only role at the vCenter Server data center level.
- D. Assign the user the read-only role at the vCenter Server cluster level.

Correct Answer: A



Reference: https://pubs.vmware.com/vsphere-60/index.jsp?topic=%2Fcom.vmware.vsphere.vm_admin.doc%2FGUID18F4B892-D685-4473-AC25-3195D68DFD90.html

QUESTION 2

Which two statements are true regarding iSCSI adapters? (Choose two.)

- A. Software iSCSI adapters require vmkernel networking.
- B. Independent Hardware iSCSI adapters offload processing from the ESXi host.



C. Dependent Hardware iSCSI adapters do not require vmkernel networking.

D. Independent Hardware iSCSI adapters require vmkernel networking.

Correct Answer: AB

: Software iSCSI Adapter A software iSCSI adapter is a VMware code built into the VMkernel. It allows your host to connect to the iSCSI storage device through standard network adapters. The software iSCSI adapter handles iSCSI processing while communicating with the network adapter. With the software iSCSI adapter, you can use iSCSI technology without purchasing specialized hardware.

Hardware iSCSI Adapter A hardware iSCSI adapter is a third-party adapter that offloads iSCSI and network processing from your host. Hardware iSCSI adapters are divided into categories. Dependent Hardware iSCSI Adapter Depends on VMware networking, and iSCSI configuration and management interfaces provided by VMware. This type of adapter can be a card that presents a standard network adapter and iSCSI offload functionality for the same port. The iSCSI offload functionality depends on the host's network configuration to obtain the IP, MAC, and other parameters used for iSCSI sessions. An example of a dependent adapter is the iSCSI licensed Broadcom 5709 NIC. Independent Hardware iSCSI Adapter Implements its own networking and iSCSI configuration and management interfaces. An example of an independent hardware iSCSI adapter is a card that either presents only iSCSI offload functionality or iSCSI offload functionality and standard NIC functionality. The iSCSI offload functionality has independent configuration management that assigns the IP, MAC, and other parameters used for the iSCSI sessions. An example of a independent adapter is the QLogic QLA4052 adapter. Hardware iSCSI adapters might need to be licensed. Otherwise, they will not appear in the client or vSphere CLI. Contact your vendor for licensing information

Reference: <https://pubs.vmware.com/vsphere-60/topic/com.vmware.ICbase/PDF/vsphere-esxi-vcenter-server-60-storage-guide.pdf>

QUESTION 3

An administrator enables High Availability (HA) on a Virtual SAN cluster.

There are four vmkernel port groups with the following IP addresses assigned:

1.

Management: 192.168.12.10

2.

vMotion: 192.168.13.10

3.

Virtual SAN: 192.168.14.10

4.

Fault Tolerance: 192.168.15.10

Which IP address will HA use for traffic?

A. 192.168.12.10

B. 192.168.13.10



C. 192.168.14.10

D. 192.168.15.10

Correct Answer: C

Give the VMKernel port a label (e.g. iSCSI - if it will purley be used for iSCSI).

Enter the VLAN ID if the pNICs connected to the vSwitch are trunk ports and you have a specific VLAN for this traffic (e.g. a dedicated storage VLAN).

Now if the port will only be used for storage services (iSCSI and NFS).

If the port will be used for all VMkernel services (iSCSI, NFS, vMotion and FT), tick the additional boxes to allow this port to be used also for those services, Assigned the FT (IP Address)

Clustering is configured to give you, the administrator of an environment, a form of fault tolerance, and VMware has taken this concept to a whole other level. Although VMware does not call FT clustering, it functions the same in that FT will failover the primary virtual machine to a secondary virtual machine.

VMware Fault Tolerance (FT) is based on vLockstep technology and provides zero downtime, zero data loss, and continuous availability for your applications.

Next,

?Always assign a reasonably high relative share for the Fault Tolerance

resource pool because FT is a very latency-sensitive traffic type.

QUESTION 4

An administrator wants to clone the configuration of an existing ESXi6.x host to a new group of hosts, but does not want to clone storage specific settings.

Which action would accomplish this?

A. Remove sub-profile

B. Revert profile

C. Uncheck sub-profile

D. Disable VM Storage profile

Correct Answer: A

QUESTION 5



An administrator attempts to place a Storage DRS enabled Datastore into Maintenance Mode. The task never completes, and the Entering Maintenance Mode status remains at 1%.

Which two actions should the administrator take to resolve this problem? (Choose two.)

- A. Set the Storage DRS advanced option IgnoreAffinityRulesForMaintenance = 1.
- B. Set the Storage DRS advanced option IgnoreAffinityRulesForMaintenance = 0.
- C. Disable Storage DRS affinity rules associated with this datastore cluster.
- D. Enable Storage DRS affinity rules associated with this datastore cluster.

Correct Answer: AC

Explanation: Problem

A datastore in a datastore cluster cannot enter maintenance mode. The Entering Maintenance Mode status remains at 1%.

Cause

One or more disks on the datastore cannot be migrated with Storage vMotion. This condition can occur in the following instances.

Storage DRS is disabled on the disk.

Storage DRS rules prevent Storage DRS from making migration recommendations for the disk.

Solution

If Storage DRS is disabled, enable it or determine why it is disabled. See Storage DRS is Disabled on a Virtual Disk for reasons why Storage DRS might be disabled. If Storage DRS rules are preventing Storage DRS from making migration recommendations, you can remove or disable particular rules.

In the vSphere Client inventory, right-click the datastore cluster and select Edit Settings.

Select Rules and click the rule.

Click Remove.

Click OK.

Alternatively, if Storage DRS rules are preventing Storage DRS from making migration recommendations, you can set the Storage DRS advanced option IgnoreAffinityRulesForMaintenance to 1.

In the vSphere Client inventory, right-click the datastore cluster and select Edit Settings.

Select SDRS Automation and click Advanced Options.

Enter 1 in the Value column for IgnoreAffinityRulesForMaintenance.



Click OK.

Reference: [https://pubs.vmware.com/vsphere-51/index.jsp?topic=%](https://pubs.vmware.com/vsphere-51/index.jsp?topic=%2Fcom.vmware.vsphere.troubleshooting.doc%2FGUID-91D4FBBC-0677-44DA-B0F243A3504F8CA0.html)

[2Fcom.vmware.vsphere.troubleshooting.doc%2FGUID-91D4FBBC-0677-44DA-B0F243A3504F8CA0.html](https://pubs.vmware.com/vsphere-51/index.jsp?topic=%2Fcom.vmware.vsphere.troubleshooting.doc%2FGUID-91D4FBBC-0677-44DA-B0F243A3504F8CA0.html)

QUESTION 6

When attempting to remove a host from a vSphere Distributed Switch (vDS), an administrator observes the error message:

The resource '\\16\\' is in use

What are two reasons why this error would be displayed? (Choose two.)

- A. VMkernel network adapters on the vDS are in use.
- B. Virtual machine network adapters are connected to the vDS.
- C. Network I/O Control has been configured on the vDS.
- D. There is active network traffic on the vDS.

Correct Answer: AB

Explanation: Cause You cannot remove the host from the distributed switch or delete the host proxy switch because of the following reasons.

1.

There are VMkernel adapters on the switch that are in use.

2.

There are virtual machine network adapters connected to the switch.

Reference: [https://pubs.vmware.com/vsphere-55/index.jsp?topic=%](https://pubs.vmware.com/vsphere-55/index.jsp?topic=%2Fcom.vmware.vsphere.troubleshooting.doc%2FGUID-038AC93F-D710-48ED-8E3B-258A23FB2930.html)

[2Fcom.vmware.vsphere.troubleshooting.doc%2FGUID-038AC93F-D710-48ED-8E3B-258A23FB2930.html](https://pubs.vmware.com/vsphere-55/index.jsp?topic=%2Fcom.vmware.vsphere.troubleshooting.doc%2FGUID-038AC93F-D710-48ED-8E3B-258A23FB2930.html)

QUESTION 7

When troubleshooting a performance related issue, an administrator sees the following warning message on an ESXi Console:

Significant imbalance between NUMA nodes detected. Performance may be impacted.

Which action should the administrator take to correct this problem?

- A. Ensure that the RAM modules are evenly balanced between processor sockets in the physical server.
- B. Ensure that all memory banks associated with CPU Socket 0 in the physical server are completely filled.
- C. Ensure that the physical server has the maximum amount of RAM modules that it can support.



D. Ensure that all RAM modules in the host are Error-correcting code (ECC) modules.

Correct Answer: A

This message displays when memory is not evenly distributed between processor sockets.

Each CPU socket has its own RAM slots. To resolve this issue, evenly balance RAM modules between processor sockets. That is, ensure that each bank of RAM slots has the same amount of RAM.

For example, if CPU socket 1 has a total of 8 GB of RAM, ensure that CPU socket 2 also has 8 GB of RAM.

Ensure that memory on the nodes are balanced. For more information and assistance, contact your vendor.

Note: Damaged or faulty physical RAM modules can also cause this issue.

Reference:

<https://kb.vmware.com/selfservice/microsites/search.do?>

language=en_US&cmd=displayKCa&externalId=1018754

QUESTION 8

An administrator is using Auto Deploy to create several ESXi 6.x hosts that will be connected to a vSphere Distributed Switch. After the hosts are deployed, the administrator notices that LACP packets are not being sent between them.

Which statement best describes why this issue is occurring?

- A. LACP is not enabled on the vCenter Server.
- B. The LACP support settings do not exist in the host profile.
- C. The LACP installation bundle is not included in the image profile.
- D. LACP has not been configured on the Auto Deploy server.

Correct Answer: B

Explanation: LACP Limitations on a vSphere Distributed Switch Link Aggregation Control Protocol (LACP) on a vSphere distributed switch allows network devices to negotiate automatic bundling of links by sending LACP packets to a peer. However, there are some limitations when using LACP with a vSphere distributed switch.

1.

LACP only works with IP Hash load balancing and Link Status Network failover detection.

2.

LACP is not compatible with iSCSI software multipathing.



3.

vSphere only supports one LACP group per distributed switch, and only one LACP group per host.

4.

LACP settings do not exist in host profiles.

5.

LACP between two nested ESXi hosts is not possible.

6.

LACP does not work with port mirroring.

Reference: <https://pubs.vmware.com/vsphere-51/index.jsp?topic=%2Fcom.vmware.vsphere.networking.doc%2FGUID-3FDE1E96-9217-4FE6-8B76-6E3A64766828.html>

QUESTION 9

An administrator wants to configure an ESXi 6.x host to use Active Directory (AD) to manage users and groups. The AD domain group ESX Admins is planned for administrative access to the host.

Which two conditions should be considered when planning this configuration? (Choose two.)

- A. If administrative access for ESX Admins is not required, this setting can be altered.
- B. The users in ESX Admins are not restricted by Lockdown Mode.
- C. An ESXi host provisioned with Auto Deploy cannot store AD credentials.
- D. The users in ESX Admins are granted administrative privileges in vCenter Server.

Correct Answer: AC

Configure a Host to Use Active Directory You can configure a host to use a directory service such as Active Directory to manage users and groups. When you add an ESXi host to Active Directory the DOMAIN group ESX Admins is assigned full administrative access to the host if it exists. If you do not want to make full administrative access available, see VMware Knowledge Base article 1025569 for a workaround. If a host is provisioned with Auto Deploy, Active Directory credentials cannot be stored on the hosts. You can use the vSphere Authentication Proxy to join the host to an Active Directory domain. Because a trust chain exists between the vSphere Authentication Proxy and the host, the Authentication Proxy can join the host to the Active Directory domain. See Using vSphere Authentication Proxy.

Reference: <https://pubs.vmware.com/vsphere-60/index.jsp?topic=%2Fcom.vmware.vsphere.security.doc%2FGUID63D22519-38CC-4A9F-AE85-97A53CB0948A.html>

QUESTION 10

An administrator is unable to patch an ESXi 6.x host using VMware Update Manager.

What is an alternative option for patching a host?

- A. Upload the offline bundle to a datastore and execute the command `esxcli software vib install -d` to apply it manually.



- B. Upload the vib to a datastore and execute the command `esxcli software vib install -d` to apply it manually.
- C. Upload the offline bundle to a datastore and execute the command `esxupdate install -v` to apply it manually.
- D. Upload the vib to a datastore and execute the command `esxupdate install -v` to apply it manually.

Correct Answer: A

Update a Host with Individual VIBs You can update a host with VIBs stored in a software depot that is accessible through a URL or in an offline ZIP depot. Important If you are updating ESXi from a zip bundle in a VMware-supplied depot, either online from the VMware Web site or downloaded locally, VMware supports only the update method specified for VMware-supplied depots in the topic Upgrade or Update a Host with Image Profiles. The `esxcli software vib update` and `esxcli software vib install` commands are not supported for upgrade operations. See Differences Between vSphere Upgrades and Updates and Upgrade or Update a Host with Image Profiles

Reference: <https://pubs.vmware.com/vsphere-60/index.jsp?topic=%2Fcom.vmware.vsphere.upgrade.doc%2FGUID1E773360-CB1C-4BC2-B2A4-B73AB5706FAF.html>

QUESTION 11

An administrator notices that one virtual machine is in an orphaned state.

What are two reasons that a virtual machine can appear as orphaned? (Choose two.)

- A. A VMware High Availability host failure has occurred.
- B. The virtual machine was unregistered directly on the host.
- C. The ESXi host is disconnected.
- D. The user does not have privilege to access the virtual machine.

Correct Answer: AB

Explanation: Please refer to the following link to understand more about the Orphaned State: https://kb.vmware.com/selfservice/microsites/search.do?language=en_US&cmd=displayKC&externalId=1003742

QUESTION 12

Refer to the Exhibit.



Device Details

Properties

Paths

Owner

NMP

Partition Details

Partition Format

GPT

▶ Primary Partitions

1

▶ Logical Partitions

0

Multipathing Policies

▶ Path Selection Policy

Fixed (VMware)

Storage Array Type Policy

VMW_SATP_EQL

An administrator wishes to provide Load Balanced I/O for the device shown in the Exhibit. To meet this requirement, which setting should be changed?

- A. Storage Array Type Policy = VMW_NMP_RR
- B. Path Selection Policy = Round Robin (VMware)
- C. Storage Array Type Policy = VMW_SATP_RR
- D. Path Selection Policy = MRU (VMware)

Correct Answer: B

Explanation: Round Robin (RR): The VMW_PSP_RR policy uses an automatic path selection, rotating through all available paths, enabling the distribution of load across the configured paths.

1.

For Active/Passive storage arrays, only the paths to the active controller will be used in the Round Robin policy.

2.

For Active/Active storage arrays, all paths will be used in the Round Robin policy.



Note: For logical units associated with Microsoft Cluster Service (MSCS) and Microsoft Failover Clustering virtual machines, the Round Robin pathing policy is supported only on ESXi 5.5 and later.

Reference: https://kb.vmware.com/selfservice/microsites/search.do?language=en_US&cmd=displayKC&externalId=1011340

QUESTION 13

An administrator wants to set a non-default isolation address of 192.168.1.2 for High Availability.

Which advanced setting would accomplish this task?

- A. `Das.isolationaddress0=192.168.1.2`
- B. `Das.useisolationaddress0=192.168.1.2`
- C. `Das.defaultisolationaddress0=192.168.1.2`
- D. `Das.haisolationaddress0=192.168.1.2`

Correct Answer: A

Explanation: Details In VirtualCenter Server 2.0.2 and above, you can specify more than one isolation response address for VMware High Availability (HA). The use of multiple isolation response addresses offers VMware HA a potentially more accurate picture of the network connectivity of a host. There may be situations in which a single isolation address would indicate that a host is in a state of complete isolation from the network, but access to additional isolation addresses would show that only a partial network failure has occurred. Solution Multiple isolation response addresses can be specified using the `das.isolationaddress0` through `das.isolationaddress9` options.

To specify the values for these options in Virtual Infrastructure Client:

1.

Select the HA cluster.

2.

On the Summary tab, click Edit Settings.

3.

In the Settings dialog, select VMware HA.

4.

Click Advanced Options.

5.

In the Advanced Options (HA) dialog, enter the option name and the corresponding value:

1.

Option: `das.isolationaddress0`



2.

Value: A valid IP address other than the default gateway address

Similarly, you can set more isolation response addresses using `das.isolationaddress1` through `das.isolationaddress9`.

6. In the Advanced Options (HA) dialog box, set this option:

Option: `das.usedefaultisolationaddress`

Value: false

Notes:

-

You must set this option if you are setting multiple isolation response addresses.

-

Additionally you should configure `das.usedefaultisolationaddress` to false when the default gateway is a device which cannot be pinged.

7.

Click OK.

8.

Click OK.

9.

Edit settings for the cluster again.

10.

Disable HA and click OK.

11.

Edit settings again.

12.

Enable HA and click OK.

Reference: https://kb.vmware.com/selfservice/microsites/search.do?language=en_US&cmd=displayKC&externalId=1002117

QUESTION 14

An administrator wants to monitor virtual machines on a host and send notifications when memory usage reaches 80%.



What should the administrator create in vCenter Server to accomplish this?

- A. A host alarm that will monitor virtual machine memory usage and set a trigger to email the notification.
- B. A vCenter Server alarm that will monitor virtual machine memory usage and set an action to email the notification.
- C. A host alarm that will monitor virtual machine memory usage and set an action to email the notification.
- D. A vCenter Server alarm that will monitor virtual machine memory usage and set a trigger to email the notification.

Correct Answer: B

Alarm Actions

Alarm actions are operations that occur in response to triggered alarms. For example, email notifications are alarm actions.

Reference:

https://pubs.vmware.com/vsphere-4-esx-vcenter/index.jsp#com.vmware.vsphere.dcadmin.doc_41/

[vc_client_help/working_with_alarms/c_alarm_actions.html](https://pubs.vmware.com/vsphere-4-esx-vcenter/index.jsp#com.vmware.vsphere.dcadmin.doc_41/vc_client_help/working_with_alarms/c_alarm_actions.html)

<https://pubs.vmware.com/vsphere-51/index.jsp#com.vmware.vsphere.solutions.doc/GUID-2888F03222A4-49C1-B27E-45F073E7C785.html>

QUESTION 15

An administrator wants to upgrade to vCenter Server 6.x.

The vCenter Server:

1.
Is hosted on a virtual machine server running Microsoft Windows Server 2008 R2, with 8 vCPUs and 16GB RAM.
2.
Will have an embedded Platform Services Controller.
3.
Hosts a Large Environment with 1,000 ESXi hosts and 10,000 Virtual Machines.

Why does the vCenter Server not meet the minimum requirements?

- A. Windows Server 2008 R2 is not a supported Operating System for vCenter Server.
- B. The virtual machine has insufficient resources for the environment size.
- C. The environment is too large to be managed by a single vCenter Server.
- D. The Platform Services Controller must be changed to an External deployment.



Correct Answer: B

vCenter Server for Windows Hardware Requirements

When you install vCenter Server on a virtual machine or physical server running Microsoft Windows server, your system must meet specific hardware requirements.

<https://kb.vmware.com/kb/2107948>

VMware vCenter Server 6.0 Deployment Guide - White Paper ...

<https://www.vmware.com/files/pdf/.../vmware-vcenter-server6-deployment-guide.pdf>

[2V0-621 Practice Test](#)

[2V0-621 Study Guide](#)

[2V0-621 Exam Questions](#)