



1Z0-632^{Q&As}

PeopleSoft PeopleTools 8.5x Implementation Essentials

Pass Oracle 1Z0-632 Exam with 100% Guarantee

Free Download Real Questions & Answers **PDF** and **VCE** file from:

<https://www.passapply.com/1z0-632.html>

100% Passing Guarantee
100% Money Back Assurance

Following Questions and Answers are all new published by Oracle
Official Exam Center

-  **Instant Download** After Purchase
-  **100% Money Back** Guarantee
-  **365 Days** Free Update
-  **800,000+** Satisfied Customers



**QUESTION 1**

Examine this PeopleCode program excerpt: Select the three correct statements. (Choose three.)

```
class OCP_ROWSET extends Rowset
    property integer FilledRowCount get;
    method OCP_ROWSET(&strRecName As string, &strDataFld As string, &strGetOrCreate As
string);
    method InsertRow(&iRow As integer) Returns boolean;
end-class;
```

- A. The OCP_ROWSET method runs automatically whenever an object is instantiated from the OCP_ROWSET class
- B. OCP_ROWSET is the constructor method for the OCP_ROWSET class
- C. Executing the RO_ROWSET method instantiates an object of the OCP_ROWSET class
- D. The OCP_ROWSET method must initialize an object of the Rowset class
- E. The OCP_ROWSET method is added to the Rowset class, and, by extension, to any instances of the Rowset class

Correct Answer: ABD

QUESTION 2

View the exhibits.



Question Exhibit 1 Exhibit 2

CX_CUST2 (Page)

Layout Order

Customer: NNNNN

Description: [Text Box]

Short Description: [Text Box]

Industry ID: [Text Box]

Contract Date: [Text Box]

Customer Type

- Customer
- Partner
- Employee

Question Exhibit 1 Exhibit 2

CX_CUST2 (Page)

Layout Order

Tab Order	Field ID	Lvl	Label	Type	Field	Record
1	1	0	Customer	Edit Box	CUSTOMER_ID	PSU_CUST_TBL
2	2	0	Description	Edit Box	DESCR	PSU_CUST_TBL
3	3	0	Short Description	Edit Box	DESCRSHORT	PSU_CUST_TBL
4	4	0	Customer	Radio Button	CUSTOMER_TY	PSU_CUST_TBL
5	5	0	Customer Type	Group Box		PSU_CUST_TBL
6	6	0	Industry ID	Edit Box	INDUSTRY_ID	PSU_CUST_TBL
7	7	0	Contract Date	Edit Box	CONTRACT_DT	PSU_CUST_TBL
8	8	0	Partner	Radio Button	CUSTOMER_TY	PSU_CUST_TBL
9	9	0	Employee	Radio Button	CUSTOMER_TY	PSU_CUST_TBL

Based on the page layout, what changes are necessary for the page tab order?

- A. Field IDs should be in the following order: 1, 2, 3, 6, 7, 5, 4, 8, 9
- B. Field IDs should be in the following order: 1, 2, 3, 5, 4, 6, 7, 9, 8
- C. Field IDs should be in the following order: 1, 2, 3, 6, 5, 4, 7, 8, 9
- D. Field IDs should be in the following order: 1, 2, 3, 5, 4, 6, 7, 8, 9
- E. Tab order is correct, no changes are required

Correct Answer: D

QUESTION 3

Which two field types should be placed as the last field in the list of fields in a PeopleSoft record definition? (Select two.)

- A. Character



- B. Attachment
 - C. ImageReference
 - D. Prompt
 - E. Image
 - F. LongCharacter
- Correct Answer: DEF

QUESTION 4

View the following sample search page:

Human Capital Management

Enter any information you have and click Search. Leave fields blank for a list of all values.

Find an Existing Value Add a New Value

▼ Search Criteria

Course Code: begins with

Description:

Include History Case Sensitive

Search Operators for Description:

- begins with
- contains
- =
- not =
- <
- <=
- >
- >=
- between
- in

On the Human Capital Management search page, why is the Course Code field limited to accept only "begins with" searches, whereas the Description field accepts a wide range of search operators?

- A. Description is an alternate search key
- B. The Required check box is selected for the Course Code field on the Edits tab of the Record Field Properties dialog box
- C. Course is a character (Char) field, while Description is a long character (Long) field
- D. Disable Advanced Search Options is selected for the Course field on the Use tab of the Record Field Properties



dialog box

E. Course is a primary key, and primary keys can only run "begins with" searches

Correct Answer: D

QUESTION 5

You are asked to modify the Customer Products Purchased application to provide auto complete on the search page for the customer name. This application uses the following definitions.

- Search record: PSU_CUST_TBL
- Record: PSU_CUST_PROD
- Page: PSU_CUST_PROD
- Component: PSU_CUST_PROD

How will you implement this change?

A. Select the Enable Autocomplete when used in Search Record check box for the DESCR field on the PSU_CUST_PROD record

B. Select the Enable Autocomplete when used in Search Record check box for the CUSTOMER_ID field on the PSU_CUST_PROD record

C. Select the Force Search Processing check box on the Use tab of the Component Properties dialog box for PSU_CUST_PROD

D. Select the Enable Autocomplete when used in Search Record check box for the DESCR field on the PSU_CUST_TBL record

E. Select the Enable Autocomplete when used in Search Record check box for the CUSTOMER_ID field on the PSU_CUST_TBL record

F. Select the Show Prompt Button check box for the DESCR field on the PSU_CUST_PROD page

Correct Answer: C

QUESTION 6

This PeopleCode statement appears in a PreBuild program:

```
andObject = GetLevel10();
```

Which two statements are true? (Choose two.)

A. andObject is a Rowset object that contains the level 0 row

B. andObject represents the entire component buffer

C. andObject is a Row object that contains the level 0 rowset

D. andObject is a stand-alone rowset



E. andObject is a stand-alone row

F. andObject is a Record object that contains the level 0 record

Correct Answer: CF

QUESTION 7

Choose the correct statement about translate values appearing in the drop-down list on a page.

A. The translate values must be active and have an effective date earlier than the effective date on the prompting table

B. The translate values must be active and you must enter a short name when adding the translate value

C. The translate values must be active and not contain any special characters

D. The translate values must be active and all values must have the same length

E. The translate values must be active and have an effective date later than the effective date on the prompting table

Correct Answer: A

Reference: https://docs.oracle.com/cd/E41633_01/pt853pbh1/eng/pt/tapd/task_UsingtheTranslateTable077674.html

QUESTION 8

Select three steps that comprise the user interface phase of PeopleSoft application development? (Choose three.)

A. Register components

B. Define fields

C. Define pages

D. Define components

E. Define records

F. Build records

Correct Answer: ACD

Reference: https://docs.oracle.com/cd/E41633_01/pt853pbh1/eng/pt/tapd/task_UsingPeopleSoftApplicationDesigner-0776f2.html

QUESTION 9

Review the definition of the Calculate user-defined function.



```
1 Function Calculate(&rate As number in, &output As number out)
2     &output = &output * (1 + &rate);
3     &rate = 0; /* Reset the rate to zero */
4 End-Function;
```

Then, review the invocation of this Calculate function in a FieldChange program:

```
1 Local number &incr = 0.12;
2
3 Declare Function Calculate PeopleCode FUNCLIB_ED_SVCS.CALC FieldFormula;
4 Calculate(&incr, EMPLOYEE.SALARY);
```

Which two corrections are required to allow these PeopleCode programs to be saved as syntactically correct programs that produce valid results? (Choose two.)

- A. In the FieldChange program, move line 3 to become line 1
- B. In the function definition, delete the in and out modifiers on line 1
- C. Delete line 3 from the function definition. In the FieldChange program, add the following as line 5: andincr = 0;
- D. Replace line 4 in the FieldChange program with the following:

```
Local number &salary = EMPLOYEE.SALARY.Value;
Calculate(&incr, salary);
EMPLOYEE.SALARY.Value = &salary;
```

Correct Answer: BD

QUESTION 10

Your client has stipulated that a bonus of greater than 10% requires prior approval. The following SaveEdit program was developed to issue a warning when the bonus exceeds that amount:

```
If PAY_TABLE.BONUS_PCT.Value > 10 Then
    Warning MsgGet(23224, 10, "Message not found.");
End-If;
```

However, as written, this warning is reissued for previously approved and saved bonus amounts that exceed 10%. How should you revise the conditions in the If clause to display a warning for new or updates bonuses only?

- A. Check the IsDirty property of the Field object
- B. Check the IsNew property of the Row object
- C. Check the IsChanged property of the Field object
- D. Check the IsNew property of the Field object



- E. Check the IsDirty property of the Row object
- F. Check the IsNew property of the Record object

Correct Answer: CF

QUESTION 11

Examine the following code:

```
&SQL = GetSQL(SQL.ABSENCE_SQL, JOB.EMPL_ID);  
While &SQL.Fetch(&start_dt)  
    /* Do some processing here. */  
End-While;
```

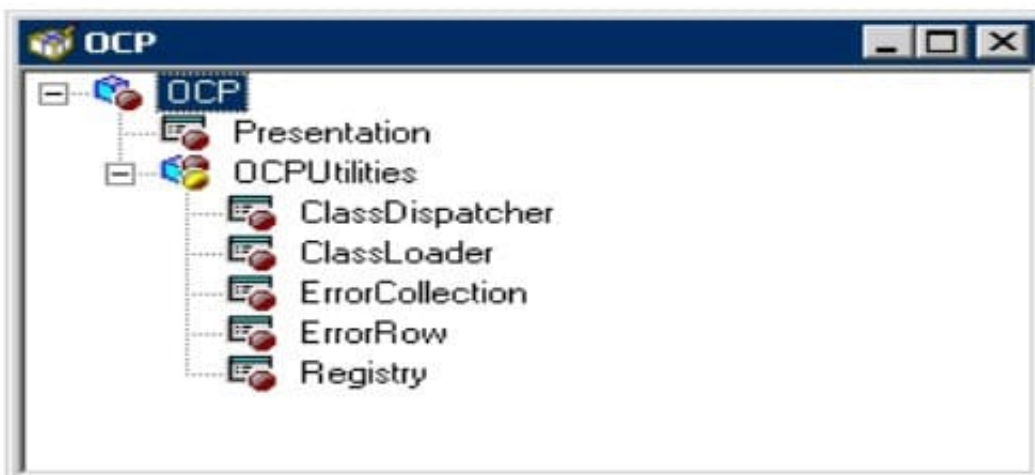
Which two statements are correct? (Choose two.)

- A. ABSENCE_SQL contains an INSERT clause
- B. ABSENCE_SQL contains a DELETE clause
- C. ABSENCE_SQL is a SQL object
- D. ABSENCE_SQL is a SQL definition name
- E. ABSENCE_SQL contains a SELECT clause
- F. ABSENCE_SQL is a SQL method

Correct Answer: EF

QUESTION 12

Review the following definition:





Select the correct PeopleCode statement to declare an object of the ErrorRow class.

- A. Component OCP:OCPUtilities: ErrorRow andNewObject
- B. Component andNewObject extends ErrorRow;
- C. Row OCP:OCPUtilities:ErrorRow andNewObject;
- D. andNewObject = create OCP:OCPUtilities:ErrorRow();
- E. andNewObject = Get (OCP:OCPUtilities:ErrorRow);
- F. Component OCP.OCPUtilities.ErrorRow andNewObject

Correct Answer: A

QUESTION 13

This SQL definition uses effective-date logic to return the current row from PSXLATITEM.

```
SQLExec ("SELECT A.XLATSHORTNAME, A.XLATLONGNAME  
FROM PSXLATITEM A  
WHERE A.EFFDT = (  
SELECT MAX (B.EFFDT)  
FROM PSXLATITEM B  
WHERE A.FIELDNAME = B.FIELDNAME  
AND A.FIELDVALUE = B.FIELDVALUE  
AND B.EFFDT <= date)");
```

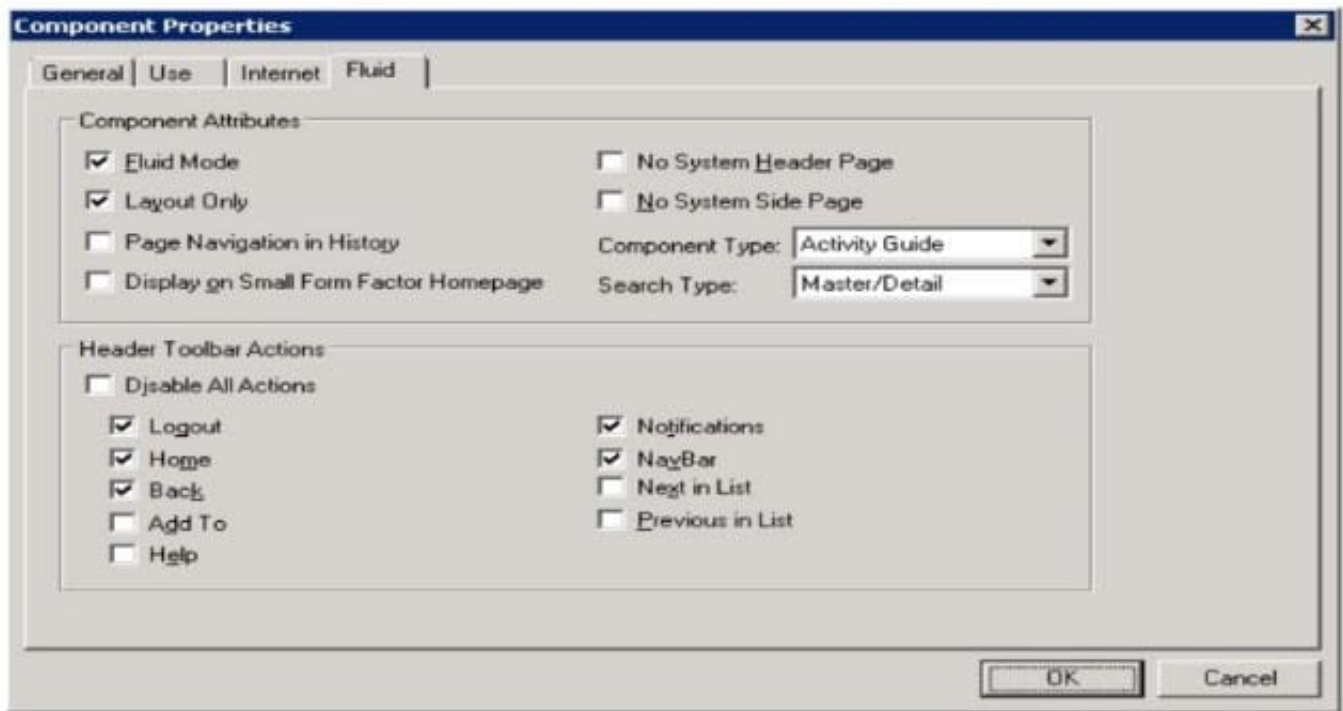
Which meta-SQL element should be substituted for date so the SQL correctly returns the current row as of the run date for all supported database platforms?

- A. %CurretnDateIn
- B. %CurrentDateOut
- C. %Date
- D. %DateTime
- E. %EffDtCheck

Correct Answer: D

QUESTION 14

An end user is accessing your field application for the first time using her smartphone. What will the end user notice based on the settings shown in this example?



- A. The end user will not be able to navigate back to pages previously accessed
- B. The end user will need to navigate to the classic homepage to access this component because it is an activity guide
- C. To save screen space on the small screen and to send less data to the phone, only the layout outline of the page elements will be visible
- D. The Notifications button will not appear in the fluid header for smartphones
- E. The end user will not see a tile on the fluid homepage to tap for accessing for the component

Correct Answer: A

QUESTION 15

When testing a fluid page, one of your colleagues says that the page suddenly is not rendering as expected. He believes he may have accidentally deleted a group box on the page. Using the developer tools of your browser, you inspect the HTML elements.

Which vital structural element of a fluid page must still exist in order for the page to render properly?

- A.