



# 199-01<sup>Q&As</sup>

Riverbed Certified Solutions Professional

## Pass Riverbed 199-01 Exam with 100% Guarantee

Free Download Real Questions & Answers **PDF** and **VCE** file from:

<https://www.passapply.com/199-01.html>

100% Passing Guarantee  
100% Money Back Assurance

Following Questions and Answers are all new published by Riverbed  
Official Exam Center

-  **Instant Download** After Purchase
-  **100% Money Back** Guarantee
-  **365 Days** Free Update
-  **800,000+** Satisfied Customers



**QUESTION 1**

What is the default trap severity for system messages?

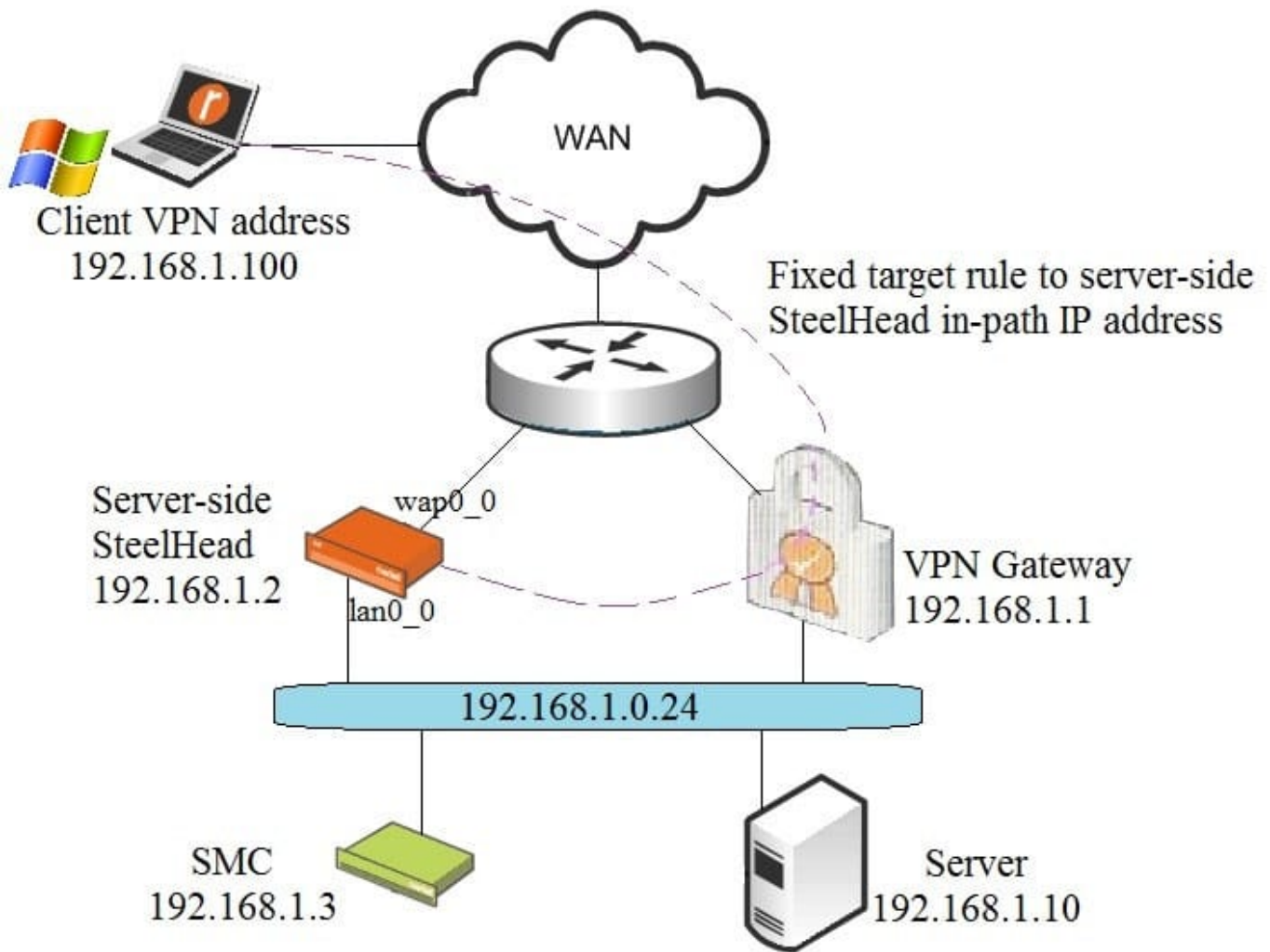
- A. Debugging
- B. Informational
- C. Notice
- D. Warning

Correct Answer: C

---

**QUESTION 2**

A customer already has a SteelHead appliance in their datacenter and wants to add Steelhead Mobile. Their current deployment has their VPN gateway in parallel with their server-side SteelHead. The customer doesn't want to interrupt VPN clients by moving the SteelHead in-path with the VPN gateway, so they will test using a fixed-target rule to the SteelHead in-path interface. Take a look at this diagram: Will the client traffic be optimized to the server 192.168.1.10?



- A. No, the fixed-target rule should be directed to the SteelCentral Controller for SteelHead Mobile IP address.
- B. No, the SteelHead Mobile client will report `asymmetry` and fail to optimize.
- C. Yes, the WAN router will redirect traffic to the SteelHead using PBR.
- D. Yes, the fixed-target rule will direct traffic to the SteelHead correctly.

Correct Answer: B

### QUESTION 3

How many failover buddies can be configured for a single Interceptor?

- B. 2
- C. 3
- D. 4
- E. No limit



Correct Answer: A

---

#### QUESTION 4

Which are true about the Steelhead appliance backups taken and stored by the CMC appliance? (Select 3)

- A. They are text file snapshots of the current running configuration taken at 3 a.m. (by default)
- B. The CMC appliance creates hyperlinks of the backups for easy viewing with a Web browser
- C. The configurations can be copied from the CMC appliance back to the Steelhead appliance via SCP
- D. There is a limit of five configurations per Steelhead appliance that can be stored at any one time in a rolling queue
- E. The Steelhead configuration files can be edited on the CMC appliance

Correct Answer: ABC

---

#### QUESTION 5

Which of the following authentication methods are supported by the Steelhead appliance?

- A. RADIUS and Local
- B. TACACS and Local
- C. TACACS, RADIUS, and Local
- D. TACACS, Kerberos, and Local
- E. TACACS, RADIUS, Kerberos, and Local

Correct Answer: C

---

#### QUESTION 6

Which command shows the last boot partition and the next boot partition? (Select 2)

- A. show bootvar
- B. show images
- C. show info
- D. show bootpar
- E. show system
- F. show version

Correct Answer: AB

---



### QUESTION 7

When two or more Steelhead appliances are configured with Connection Forwarding in such environments as WCCP clustering, what feature will allow remaining Steelhead appliances to continue to provide optimization for new connections when one unit fails?

- A. In-Path Neighbor Failure Allow
- B. WCCP neighbor active
- C. Minimum cluster count set to 1
- D. Maximum cluster count set to 2
- E. This cannot be done on Steelhead appliances

Correct Answer: A

---

### QUESTION 8

What do the log messages below mean?

Aug 30 18:19:27 SH pm[18716]: [pm.ERR]: Output from sport: /opt/rbt/bin/sport (pid 11304) received signal 6 (SIGABRT) dumping core

- A. The SteelHead has been rebooted via the GUI or the CLI (init 6)
- B. The Optimization Service indicated that a thread was busy
- C. The Optimization Service received a signal to generate a system dump
- D. The Optimization Service terminated normally
- E. The Optimization Service crashed

Correct Answer: E

---

### QUESTION 9

To configure a Steelhead appliance for logical in-path mode, the following must be enabled in the General Service Settings page:

- A. Reset Existing Client Connections on Start Up
- B. Enable L4/PBR/WCCP Support on Interface wan0\_0
- C. Enable Optimizations on Interface inpath0\_0
- D. B and C
- E. A, B, and C



Correct Answer: D

---

#### QUESTION 10

When deploying failover Interceptors, all in-path interfaces must:

- A. be deployed on different physical links.
- B. be deployed on 802.1Q trunks.
- C. be deployed on all the same physical links.
- D. be deployed separately.

Correct Answer: C

---

#### QUESTION 11

How do you view the full configuration in the CLI?

- A. > Show Con
- B. Show Configuration
- C. > show configuration all
- D. # show configuration full
- E. (config) # show con

Correct Answer: D

---

#### QUESTION 12

When deploying policy-based routing for multiple Steelhead appliances in a cluster, the router should be configured to: (Select 2)

- A. Set IP next-hop address to the virtual IP address of the Steelhead appliance cluster
- B. Set IP next-hop addresses for each Steelhead appliance
- C. Check the state level information on each Steelhead appliance via SLA or CDP
- D. Auto-detect the Steelhead appliance clustering protocol
- E. Check the state level information on the virtual IP address of the Steelhead appliance cluster

Correct Answer: BC

---



### QUESTION 13

What probe is being used in the inner channel between two Steelhead appliances when using Full Transparency in hex?

- A. 0x4e
- B. 0x4d
- C. 0x4c
- D. 0x4b
- E. No probe is used

Correct Answer: A

---

### QUESTION 14

If a Steelhead appliance is configured for logical in-path mode:

- A. The Primary interface cannot be on the same subnet
- B. The LAN In-path interface will be disabled
- C. The WAN In-path interface will be disabled
- D. The Steelhead appliance listens for the Interceptor on TCP port 7860

Correct Answer: B

---

### QUESTION 15

What command should you use to see the direct URL of a package?

- A. show rsp slots
- B. show rsp modules
- C. show rsp platform
- D. show rsp packages
- E. show rsp vms

Correct Answer: A