



156-915.77^{Q&As}

Check Point Certified Security Expert Update

Pass CheckPoint 156-915.77 Exam with 100% Guarantee

Free Download Real Questions & Answers **PDF** and **VCE** file from:

<https://www.passapply.com/156-915-77.html>

100% Passing Guarantee
100% Money Back Assurance

Following Questions and Answers are all new published by CheckPoint Official Exam Center

-  **Instant Download** After Purchase
-  **100% Money Back** Guarantee
-  **365 Days** Free Update
-  **800,000+** Satisfied Customers





QUESTION 1

MultiCorp is located in Atlanta. It has a branch office in Europe, Asia, and Africa. Each location has its own AD controller for local user login. How many ADqueries have to be configured?

Correct Answer: A

QUESTION 2

Captive Portal is a _____ that allows the gateway to request login information from the user.

- A. Pre-configured and customizable web-based tool
- B. Transparent network inspection tool
- C. LDAP server add-on
- D. Separately licensed feature

Correct Answer: A

QUESTION 3

You have a diskless appliance platform. How do you keep swap file wear to a minimum?

- A. Issue FW-1 bases its package structure on the Security Management Server, dynamically loading when the firewall is booted.
- B. The external PCMCIA-based flash extension has the swap file mapped to it, allowing easy replacement.
- C. Use PRAM flash devices, eliminating the longevity.
- D. A RAM drive reduces the swap file thrashing which causes fast wear on the device.

Correct Answer: D

QUESTION 4

ALL of the following options are provided by the GAIa sysconfig utility, EXCEPT:

- A. Export setup
- B. DHCP Server configuration
- C. Time and Date
- D. GUI Clients

Correct Answer: D



QUESTION 5

You just installed a new Web server in the DMZ that must be reachable from the Internet. You create a manual Static NAT rule as follows:

Source: Any || Destination: web_public_IP || Service: Any || Translated Source: original || Translated Destination: web_private_IP || Service: Original

"web_public_IP" is the node object that represents the new Web server's public IP address. "web_private_IP" is the node object that represents the new Web site's private IP address. You enable all settings from Global Properties > NAT.

When you try to browse the Web server from the Internet you see the error "page cannot be displayed".

Which of the following is NOT a possible reason?

- A. There is no Security Policy defined that allows HTTP traffic to the protected Web server.
- B. There is no ARP table entry for the protected Web server's public IP address.
- C. There is no route defined on the Security Gateway for the public IP address to the Web server's private IP address.
- D. There is no NAT rule translating the source IP address of packets coming from the protected Web server.

Correct Answer: D

QUESTION 6

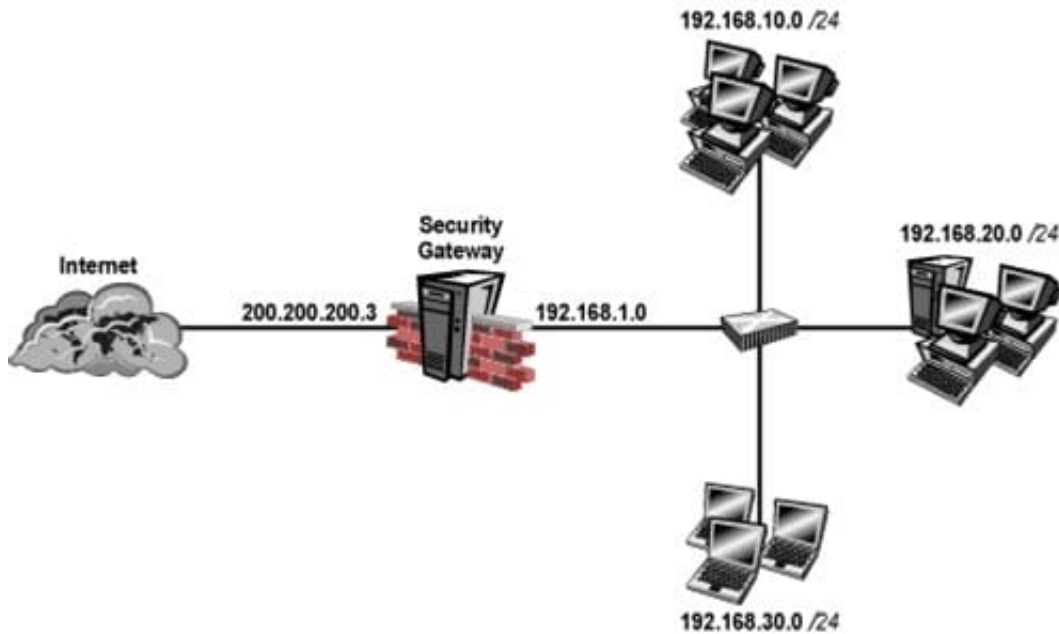
Because of pre-existing design constraints, you set up manual NAT rules for your HTTP server. However, your FTP server and SMTP server are both using automatic NAT rules. All traffic from your FTP and SMTP servers are passing through the Security Gateway without a problem, but traffic from the Web server is dropped on rule 0 because of anti-spoofing settings. What is causing this?

- A. Manual NAT rules are not configured correctly.
- B. Allow bi-directional NAT is not checked in Global Properties.
- C. Routing is not configured correctly.
- D. Translate destination on client side is not checked in Global Properties under Manual NAT Rules.

Correct Answer: D

QUESTION 7

Your perimeter Security Gateway's external IP is 200.200.200.3. Your network diagram shows:



Required: Allow only network 192.168.10.0 and 192.168.20.0 to go out to the Internet, using 200.200.200.5.

The local network 192.168.1.0/24 needs to use 200.200.200.3 to go out to the Internet.

Assuming you enable all the settings in the NAT page of Global Properties, how could you achieve these requirements?

- A. Create network objects for 192.168.10.0/24 and 192.168.20.0/24. Enable Hide NAT on both network objects, using 200.200.200.5 as hiding IP address. Add an ARP entry for 200.200.200.3 for the MAC address of 200.200.200.5.
- B. Create an Address Range object, starting from 192.168.10.1 to 192.168.20.254. Enable Hide NAT on the NAT page of the address range object. Enter Hiding IP address 200.200.200.5. Add an ARP entry for 200.200.200.5 for the MAC address of 200.200.200.3.
- C. Create a network object 192.168.0.0/16. Enable Hide NAT on the NAT page. Enter 200.200.200.5 as the hiding IP address. Add an ARP entry for 200.200.200.5 for the MAC address of 200.200.200.3.
- D. Create two network objects: 192.168.10.0/24 and 192.168.20.0/24. Add the two network objects to a group object. Create a manual NAT rule like the following: Original source - group object; Destination any; Service - any; Translated source - 200.200.200.5; Destination - original; Service - original.

Correct Answer: B

QUESTION 8

When do modifications to the Event Policy take effect?

- A. As soon as the Policy Tab window is closed.
- B. When saved on the SmartEvent Server and installed to the Correlation Units.
- C. When saved on the Correlation Units, and pushed as a policy.



D. When saved on the SmartEvent Client, and installed on the SmartEvent Server.

Correct Answer: B

QUESTION 9

In SmartDashboard, Translate destination on client side is checked in Global Properties. When Network Address Translation is used:

- A. It is not necessary to add a static route to the Gateway's routing table.
- B. It is necessary to add a static route to the Gateway's routing table.
- C. The Security Gateway's ARP file must be modified.
- D. VLAN tagging cannot be defined for any hosts protected by the Gateway.

Correct Answer: A

QUESTION 10

How many pre-defined exclusions are included by default in SmartEvent R77 as part of the product installation?

- A. 5
- B. 0
- C. 10
- D. 3

Correct Answer: D

QUESTION 11

You are responsible for the configuration of MegaCorp's Check Point Firewall. You need to allow two NAT rules to match a connection. Is it possible? Give the BEST answer.

- A. No, it is not possible to have more than one NAT rule matching a connection. When the firewall receives a packet belonging to a connection, it compares it against the first rule in the Rule Base, then the second rule, and so on. When it finds a rule that matches, it stops checking and applies that rule.
- B. Yes, it is possible to have two NAT rules which match a connection, but only in using Manual NAT (bidirectional NAT).
- C. Yes, there are always as many active NAT rules as there are connections.
- D. Yes, it is possible to have two NAT rules which match a connection, but only when using Automatic NAT (bidirectional NAT).

Correct Answer: D



QUESTION 12

Which two processes are responsible on handling Identity Awareness?

- A. pdp and lad
- B. pdp and pdp-11
- C. pep and lad
- D. pdp and pep

Correct Answer: D

QUESTION 13

Which of the following options is available with the GAiA cpconfig utility on a Management Server?

- A. Export setup
- B. DHCP Server configuration
- C. GUI Clients
- D. Time and Date

Correct Answer: C

QUESTION 14

Type the full fw command and syntax that will show full synchronization status.

- A. fw ctl pstat

Correct Answer: A

QUESTION 15

Where does the security administrator activate Identity Awareness within SmartDashboard?

- A. Gateway Object > General Properties
- B. Security Management Server > Identity Awareness
- C. Policy > Global Properties > Identity Awareness
- D. LDAP Server Object > General Properties

Correct Answer: A



VCE & PDF

PassApply.com

<https://www.passapply.com/156-915-77.html>

2024 Latest passapply 156-915.77 PDF and VCE dumps Download

[Latest 156-915.77 Dumps](#)

[156-915.77 Practice Test](#)

[156-915.77 Study Guide](#)