



# 156-727.77<sup>Q&As</sup>

Threat Prevention

## Pass CheckPoint 156-727.77 Exam with 100% Guarantee

Free Download Real Questions & Answers **PDF** and **VCE** file from:

<https://www.passapply.com/156-727-77.html>

100% Passing Guarantee  
100% Money Back Assurance

Following Questions and Answers are all new published by CheckPoint Official Exam Center

-  **Instant Download** After Purchase
-  **100% Money Back** Guarantee
-  **365 Days** Free Update
-  **800,000+** Satisfied Customers





#### QUESTION 1

Which of the following is information uploaded to ThreatCloud?

- A. Compromised Machine IP Addresses
- B. Malware Site IP Addresses
- C. Anticipated Attack Methods
- D. Sensitive Corporate Data

Correct Answer: B

---

#### QUESTION 2

Which TCP ports allow LDAP users to communicate with the Account Unit?

- A. 689 clear, or 336 encrypted
- B. 636 clear, or 389 encrypted
- C. 336 clear, or 689 encrypted
- D. 389 clear, or 636 encrypted

Correct Answer: D

---

#### QUESTION 3

SmartLog can be used to identify which of the following:

- A. Security Policy version control information
- B. A list of currently connected users
- C. The country of origin of specific traffic displayed on a map
- D. The top destination IP addresses of a specific source

Correct Answer: D

---

#### QUESTION 4

Sensitive corporate data is uploaded to ThreatCloud:

- A. When the administrator manually sends suspected traffic to ThreatCloud for inspection.
- B. Never



- C. When the administrator configures the sensor to be a SensorNET participant.
- D. After the bot attack has been confirmed.

Correct Answer: B

---

#### QUESTION 5

Damage from a bot attack can take place after the bot compromises a machine. Which of the following represents the order by which this process takes place? The bot:

- A. infects a machine, communicates with its command and control handlers, and penetrates the organization.
- B. penetrates the organization, infects a machine, and communicates with its command and control handlers.
- C. communicates with its command and control handlers, infects a machine, and penetrates the organization.
- D. penetrates the organization, communicates with its command and control handlers, and infects a machine.

Correct Answer: B

---

#### QUESTION 6

Which of the following is information shared via ThreatCloud?

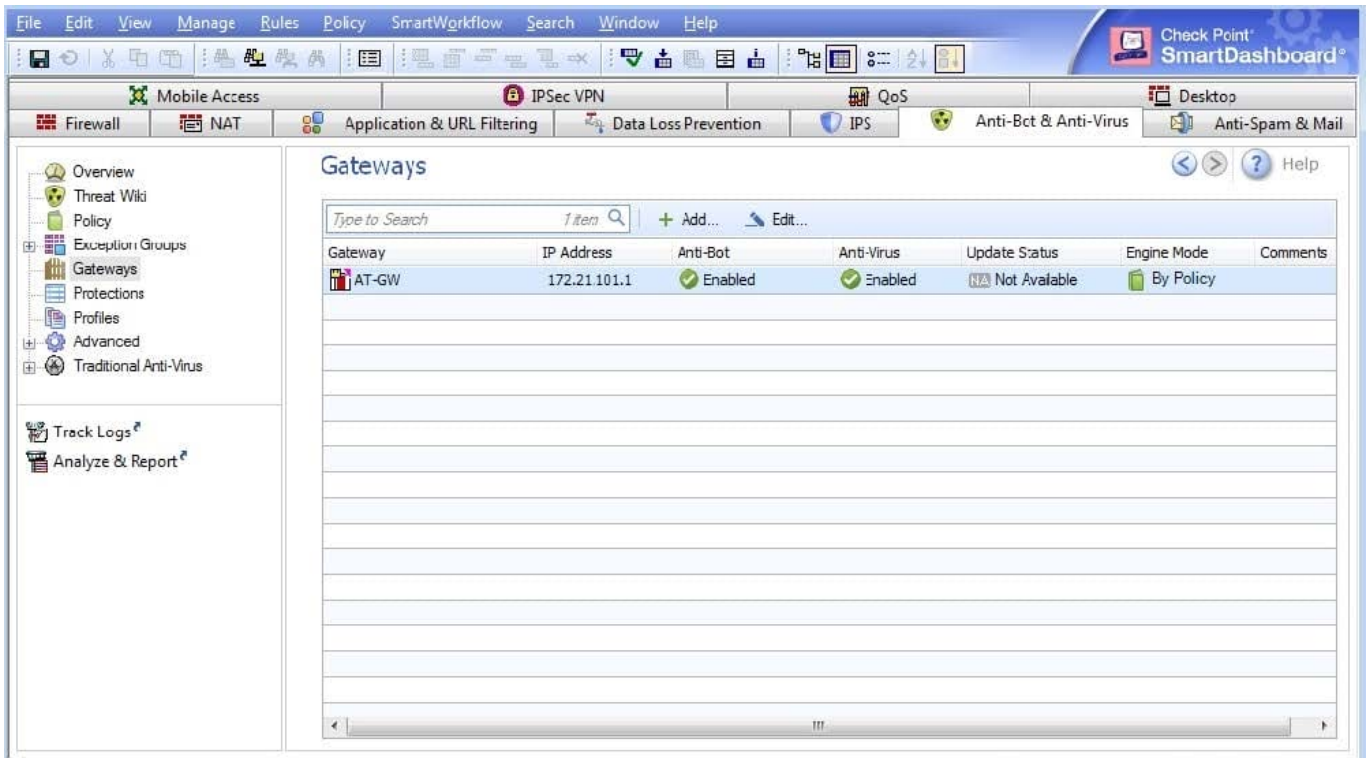
- A. Sensitive Corporate Data
- B. Bot and virus signatures
- C. Anticipated Attack Methods
- D. Compromised Machine IP Addresses

Correct Answer: B

---

#### QUESTION 7

When configuring Anti-Bot and Anti-Virus, you notice the following error in the Update Status of the Gateways page:



What is the most likely cause of this error?

- A. The Security Gateway is not licensed for Anti-Bot and Anti-Virus inspection.
- B. There are no updates available for the participating gateway.
- C. The Anti-Bot and Anti-Virus policy is not installed on the gateway.
- D. You do not have DNS or proxy settings configured for the gateway.

Correct Answer: D

### QUESTION 8

What is the name of Check Point collaborative network that delivers real-time dynamic security intelligence to Check Point threat prevention blades?

- A. ThreatSpect
- B. ThreatWiki
- C. ThreatCloud
- D. ThreatEmulator

Correct Answer: C

### QUESTION 9



When pushing the Threat Prevention policy, which of the following blades will NOT get updated?

- A. IPS
- B. Threat Emulation
- C. Anti-Bot
- D. Anti-Virus

Correct Answer: A

---

#### QUESTION 10

Which of the following statements regarding the threat prevention database is NOT correct?

- A. The Security management server connects to the internet to get Malware Database updates.
- B. By default, updates run on the security gateway every two hours.
- C. The malware database only updates if you have a valid Anti-Bot/ or Anti-Virus contract.
- D. The security gateway contains a local cache of the malware requests.

Correct Answer: A

[Latest 156-727.77 Dumps](#)

[156-727.77 VCE Dumps](#)

[156-727.77 Exam Questions](#)