



# 156-315.75<sup>Q&As</sup>

Check Point Security Expert R75

## Pass CheckPoint 156-315.75 Exam with 100% Guarantee

Free Download Real Questions & Answers **PDF** and **VCE** file from:

<https://www.passapply.com/156-315-75.html>

100% Passing Guarantee  
100% Money Back Assurance

Following Questions and Answers are all new published by CheckPoint Official Exam Center

-  **Instant Download** After Purchase
-  **100% Money Back** Guarantee
-  **365 Days** Free Update
-  **800,000+** Satisfied Customers





### QUESTION 1

The SmartEvent Server:

- A. displays the received events
- B. adds events to the events database
- C. invokes defined automatic reactions
- D. analyzes each IPS log entry as it enters the Log server

Correct Answer: C

---

### QUESTION 2

When connecting to the SSL VPN portal, you receive a pop-up message indicating that the server hostname does not match the certificate hostname, and the certificate is not signed by a known Certificate Authority (CA). How would you solve this problem?

- A. Acquire and install an SSL server certificate from a known CA.
- B. Ignore the message. It only occurs before the portal synchronizes with the GUI.
- C. Resolve the certificate-hostname conflict between the Connectra portal and the administration GUI.
- D. The administration GUI is pointing to the wrong certificate-hostname location.

Correct Answer: A

---

### QUESTION 3

You must set up SIP with a proxy for your network. IP phones are in the 172.16.100.0 network. The Registrar and proxy are installed on host 172.16.100.100. To allow handover enforcement for outbound calls from SIP-net to network Net\_B on the Internet, you have defined the following objects:

Network object: SIP-net: 172.16.100.0/24

SIP-gateway: 172.16.100.100

VoIP Domain object: VoIP\_domain\_A

1. EnD. point domain: SIP-net 2.VoIP gateway installed at: SIP-gateway host object

How would you configure the rule?

- A. SIP- Gateway/Net\_B/sip/accept
- B. VoIP\_domain\_A/Net\_B/sip/accept
- C. SIP-Gateway/Net\_B/sip/accept



D. VoIP\_domain\_A/Net\_B/sip\_any, and sip/accept

E. VoIP\_Gateway\_MJet\_B/sip\_any/accept

Correct Answer: B

---

#### QUESTION 4

During a Security Management Server migrate export, the system:

A. Creates a backup file that includes the SmartEvent database.

B. Creates a backup file that includes the SmartReporter database.

C. Creates a backup archive for all the Check Point configuration settings.

D. Saves all system settings and Check Point product configuration settings to a file.

Correct Answer: C

---

#### QUESTION 5

What cluster mode is represented in this case?

A. 3rd party cluster

B. Load Sharing (multicast mode)

C. Load Sharing Unicast (Pivot) mode

D. HA (New mode)

Correct Answer: B

---

#### QUESTION 6

If the number of kernel instances for CoreXL shown is 6, how many cores are in the physical machine?

A. 6

B. 8

C. 4

D. 12

Correct Answer: B

---

#### QUESTION 7



In a "zero downtime" scenario, which command do you run manually after all cluster members are upgraded?

- A. cphaconf set\_ccp broadcast
- B. cphaconf set clear\_subs
- C. cphaconf set mc\_relod
- D. cphaconf set\_ccp multicast

Correct Answer: D

---

### QUESTION 8

What type of object may be explicitly defined as a MEP VPN?

- A. Mesh VPN Community
- B. Any VPN Community
- C. Remote Access VPN Community
- D. Star VPN Community

Correct Answer: D

---

### QUESTION 9

Your organization maintains several IKE VPN's. Executives in your organization want to know which mechanism Security Gateway R75 uses to guarantee the authenticity and integrity of messages. Which technology should you explain to the executives?

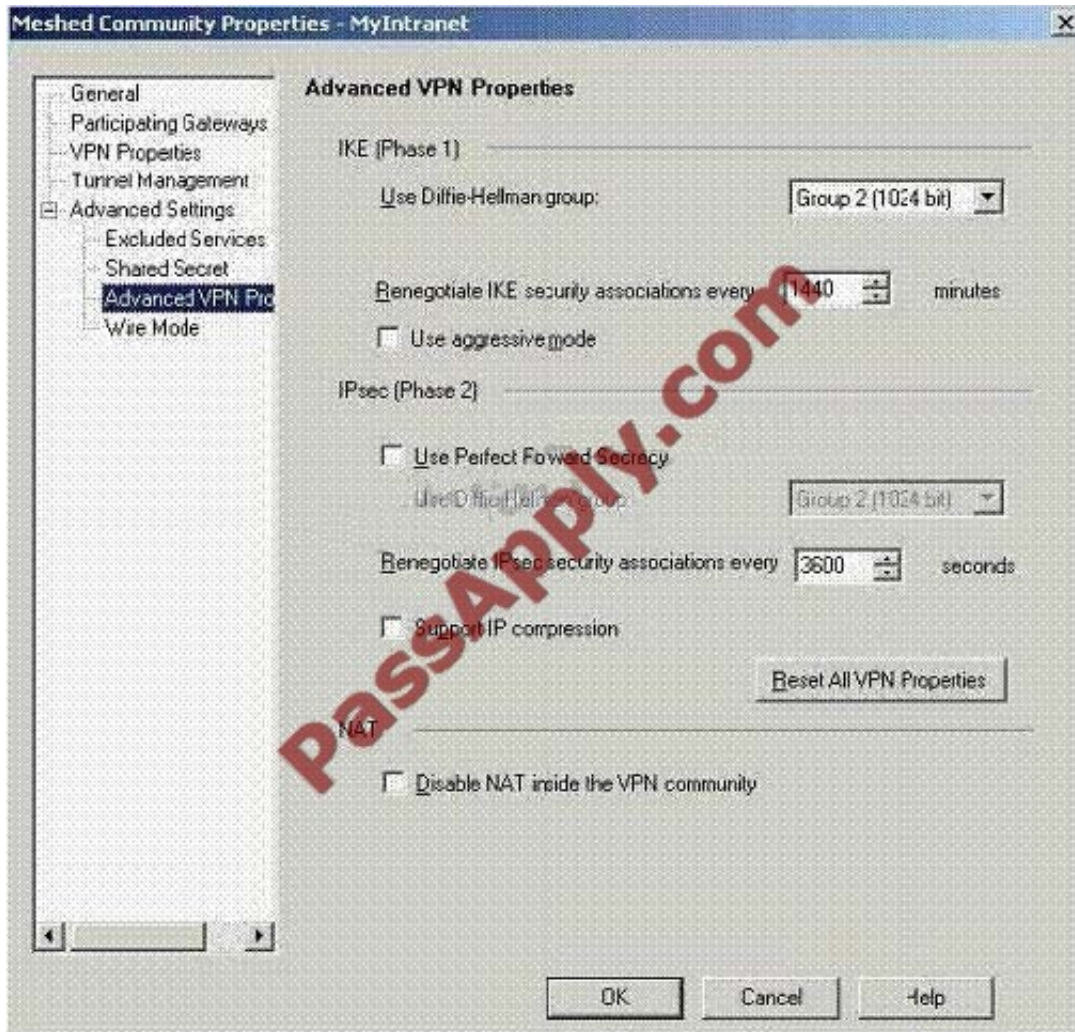
- A. Digital signatures
- B. Certificate Revocation Lists
- C. Key-exchange protocols
- D. Application Intelligence

Correct Answer: A

---

### QUESTION 10

Stephanie wants to reduce the encryption overhead and improve performance for her mesh VPN Community. The Advanced VPN Properties screen below displays adjusted page settings:What can Stephanie do to achieve her goal?



- A. Check the box "Use Perfect Forward Secrecy"
- B. Change the setting "Use Diffie. Hellman group" to "Group 5 (1536 bit)"
- C. Check the box "Use aggressive mode"
- D. Check the box "Support IP compression"
- E. Reduce the setting "Renegotiate IKE security associations every" to "720"

Correct Answer: D

#### QUESTION 11

You need to back up the routing, interface, and DNS configuration information from your R75 SecurePlatform Security Gateway. Which backup-and-restore solution do you use?

- A. SecurePlatform back up utilities
- B. Manual copies of the directory \$FWDIR/conf



C. Database Revision Control

D. Commands upgrade\_export and upgrade\_import

Correct Answer: A

---

#### QUESTION 12

You are running R71 and using the new IPS Software Blade. To maintain the highest level of security, you are doing IPS updates regularly. What kind of problems can be caused by the automatic updates?

A. None; updates will not add any new security checks causing problematic behaviour on the systems.

B. None, all new updates will be implemented in Detect only mode to avoid unwanted traffic interruptions. They have to be activated manually later.

C. None, all the checks will be activated from the beginning, but will only detect attacks and not disturb any non-malicious traffic in the network.

D. All checks will be activated from the beginning and might cause unwanted traffic outage due to false positives of the new checks and non-RFC compliant self-written applications.

Correct Answer: B

---

#### QUESTION 13

You are a SSL VPN administrator. Your users complain that their Outlook Web Access is running extremely slowly, and their overall browsing experience continues to worsen. You suspect it could be a logging problem. Which of the following logs does Check Point recommend you turn off?

A. Alert

B. Event

C. Trace

D. Traffic

Correct Answer: C

---

#### QUESTION 14

What are the 3 main components of the SmartEvent Software Blade?

1) Correlation Unit

2) Correlation Client

3) Correlation Server

4) Analyzer Server



5) Analyzer Client

6) Analyzer Unit

A. 1, 3, 4

B. 1, 4, 5

C. 1, 2, 3

D. 4, 5, 6

Correct Answer: B

---

#### QUESTION 15

What is the SmartEvent Correlation Unit's function?

A. Assign severity levels to events.

B. Display received threats and tune the Events Policy

C. Invoke and define automatic reactions and add events to the database.

D. Analyze log entries, looking for Event Policy patterns.

Correct Answer: D

[156-315.75 PDF Dumps](#)

[156-315.75 Practice Test](#)

[156-315.75 Study Guide](#)





To Read the [Whole Q&As](#), please purchase the [Complete Version](#) from [Our website](#).

## Try our product !

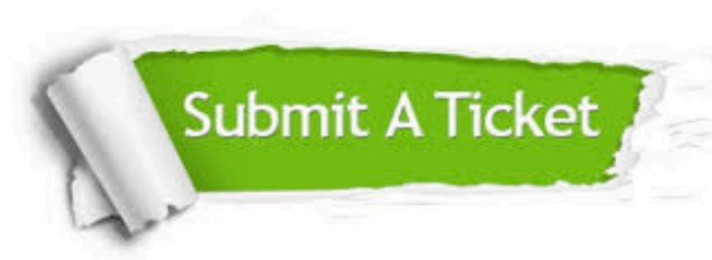
100% Guaranteed Success  
100% Money Back Guarantee  
365 Days Free Update  
Instant Download After Purchase  
24x7 Customer Support  
Average 99.9% Success Rate  
More than 800,000 Satisfied Customers Worldwide  
Multi-Platform capabilities - [Windows](#), [Mac](#), [Android](#), [iPhone](#), [iPod](#), [iPad](#), [Kindle](#)

We provide exam PDF and VCE of Cisco, Microsoft, IBM, CompTIA, Oracle and other IT Certifications. You can view Vendor list of All Certification Exams offered:

<https://www.passapply.com/allproducts>

## Need Help

Please provide as much detail as possible so we can best assist you.  
To update a previously submitted ticket:



 <p><b>One Year Free Update</b> Free update is available within One Year after your purchase. After One Year, you will get 50% discounts for updating. And we are proud to boast a 24/7 efficient Customer Support system via Email.</p>	 <p><b>Money Back Guarantee</b> To ensure that you are spending on quality products, we provide 100% money back guarantee for 30 days from the date of purchase.</p>	 <p><b>Security &amp; Privacy</b> We respect customer privacy. We use McAfee's security service to provide you with utmost security for your personal information &amp; peace of mind.</p>
---------------------------------------------------------------------------------------------------------------------------------------------------------------------------------------------------------------------------------------------------------------------------------------------------------------------------------	-------------------------------------------------------------------------------------------------------------------------------------------------------------------------------------------------------------------------------------------------------------	------------------------------------------------------------------------------------------------------------------------------------------------------------------------------------------------------------------------------------------------------------------------------------

Any charges made through this site will appear as Global Simulators Limited.  
All trademarks are the property of their respective owners.  
Copyright © passapply, All Rights Reserved.