



# 156-215.81<sup>Q&As</sup>

Check Point Certified Security Administrator R81

## Pass CheckPoint 156-215.81 Exam with 100% Guarantee

Free Download Real Questions & Answers **PDF** and **VCE** file from:

<https://www.passapply.com/156-215-81.html>

100% Passing Guarantee  
100% Money Back Assurance

Following Questions and Answers are all new published by CheckPoint Official Exam Center

-  **Instant Download** After Purchase
-  **100% Money Back** Guarantee
-  **365 Days** Free Update
-  **800,000+** Satisfied Customers





### QUESTION 1

Joey wants to configure NTP on R80 Security Management Server. He decided to do this via WebUI. What is the correct address to access the Web UI for Gaia platform via browser?

- A. https://
- B. https://:443
- C. https://:10000
- D. https://:4434

Correct Answer: A

Access to Web UI Gaia administration interface, initiate a connection from a browser to the default administration IP address: Logging in to the WebUI Logging in To log in to the WebUI:

1.

Enter this URL in your browser: https://

2.

Enter your user name and password.

Reference: [https://sc1.checkpoint.com/documents/R77/CP\\_R77\\_Gaia\\_AdminWebAdminGuide/html\\_frameset.htm?topic=documents/R77/CP\\_R77\\_Gaia\\_AdminWebAdminGuide/75930](https://sc1.checkpoint.com/documents/R77/CP_R77_Gaia_AdminWebAdminGuide/html_frameset.htm?topic=documents/R77/CP_R77_Gaia_AdminWebAdminGuide/75930)

---

### QUESTION 2

When installing a dedicated R80 SmartEvent server, what is the recommended size of the root partition?

- A. Any size
- B. Less than 20GB
- C. More than 10GB and less than 20 GB
- D. At least 20GB

Correct Answer: D

Reference: [https://sc1.checkpoint.com/documents/R80/CP\\_R80\\_LoggingAndMonitoring/html\\_frameset.htm?topic=documents/R80/CP\\_R80\\_LoggingAndMonitoring/120829](https://sc1.checkpoint.com/documents/R80/CP_R80_LoggingAndMonitoring/html_frameset.htm?topic=documents/R80/CP_R80_LoggingAndMonitoring/120829)

---

### QUESTION 3

The following graphic shows: A. View from SmartLog for logs initiated from source address 10.1.1.202



Showing first 50 results (464 ms) out of 1,318 results

Time	B...	L...	Origin	A...	Source	Source User N...	Destination	Service	Rule	Policy...	User	Source Machine...	Description
Today, 5:30:27 AM	U	A-GW	10.1.1.202	216.228.147.3	domain-udp	1	Standard						
Today, 5:30:26 AM	U	A-GW	10.1.1.202	216.228.147.3	domain-udp	1	Standard						
Today, 5:28:36 AM	U	A-GW	10.1.1.202	216.228.147.3	domain-udp	1	Standard						
Today, 5:28:35 AM	U	A-GW	10.1.1.202	216.228.147.3	domain-udp	1	Standard						
Today, 5:23:35 AM	U	A-GW	10.1.1.202	216.228.147.3	domain-udp	1	Standard						
Today, 5:23:34 AM	U	A-GW	10.1.1.202	216.228.147.3	domain-udp	1	Standard						
Today, 5:23:23 AM	U	A-GW	10.1.1.202	216.228.147.3	domain-udp	1	Standard						
Today, 5:23:22 AM	U	A-GW	10.1.1.202	216.228.147.3	domain-udp	1	Standard						
Today, 5:23:00 AM	U	A-GW	10.1.1.202	216.228.147.3	domain-udp	1	Standard						
Today, 5:22:59 AM	U	A-GW	10.1.1.202	216.228.147.3	domain-udp	1	Standard						
Today, 5:22:48 AM	U	A-GW	10.1.1.202	216.228.147.3	domain-udp	1	Standard						
Today, 5:22:47 AM	U	A-GW	10.1.1.202	216.228.147.3	domain-udp	1	Standard						
Today, 5:22:35 AM	U	A-GW	10.1.1.202	216.228.147.3	domain-udp	1	Standard						
Today, 5:22:34 AM	U	A-GW	10.1.1.202	216.228.147.3	domain-udp	1	Standard						
Today, 5:22:23 AM	U	A-GW	10.1.1.202	216.228.147.3	domain-udp	1	Standard						
Today, 5:22:22 AM	U	A-GW	10.1.1.202	216.228.147.3	domain-udp	1	Standard						
Today, 5:22:02 AM	U	A-GW	10.1.1.202	216.228.147.3	domain-udp	1	Standard						
Today, 5:22:01 AM	U	A-GW	10.1.1.202	216.228.147.3	domain-udp	1	Standard						
Today, 5:21:51 AM	U	A-GW	10.1.1.202	216.228.147.3	domain-udp	1	Standard						
Today, 5:21:50 AM	U	A-GW	10.1.1.202	216.228.147.3	domain-udp	1	Standard						
Today, 5:21:23 AM	U	A-GW	10.1.1.202	10.1.1.255	nbdatagram	1	Standard						
Today, 5:20:18 AM	U	A-GW	10.1.1.202	10.1.1.255	nbname	1	Standard						
Today, 5:09:26 AM	U	A-GW	10.1.1.202	10.1.1.255	nbdatagram	1	Standard						
Today, 5:03:58 AM	U	A-GW	10.1.1.202	216.228.147.3	domain-udp	1	Standard						
Today, 5:03:57 AM	U	A-GW	10.1.1.202	216.228.147.3	domain-udp	1	Standard						
Today, 5:03:52 AM	U	A-GW	10.1.1.202	216.228.147.3	domain-udp	1	Standard						
Today, 5:03:51 AM	U	A-GW	10.1.1.202	216.228.147.3	domain-udp	1	Standard						

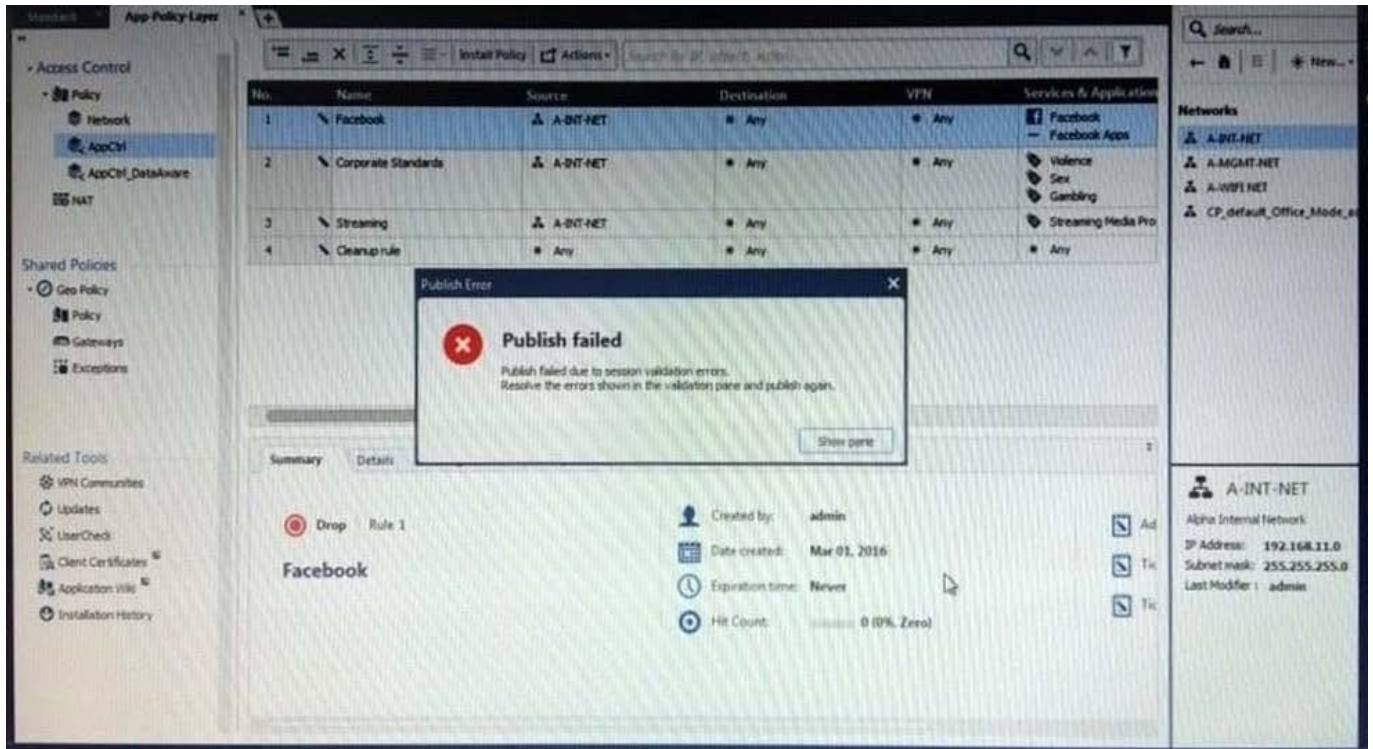
- B. View from SmartView Tracker for logs of destination address 10.1.1.202
- C. View from SmartView Tracker for logs initiated from source address 10.1.1.202
- D. View from SmartView Monitor for logs initiated from source address 10.1.1.202

Correct Answer: C

**QUESTION 4**

Administrator Kofi has just made some changes on his Management Server and then clicks on the Publish button in SmartConsole but then gets the error message shown in the screenshot below.

Where can the administrator check for more information on these errors?



- A. The Log and Monitor section in SmartConsole
- B. The Validations section in SmartConsole
- C. The Objects section in SmartConsole
- D. The Policies section in SmartConsole

Correct Answer: B

Validation Errors The validations pane in SmartConsole shows configuration error messages. Examples of errors are object names that are not unique, and the use of objects that are not valid in the Rule Base.

To publish, you must fix the errors.

Reference:

[https://sc1.checkpoint.com/documents/R80/CP\\_R80\\_SecMGMT/html\\_frameset.htm?topic=documents/R80/CP\\_R80\\_SecMGMT/126197](https://sc1.checkpoint.com/documents/R80/CP_R80_SecMGMT/html_frameset.htm?topic=documents/R80/CP_R80_SecMGMT/126197)

## QUESTION 5

What is the Transport layer of the TCP/IP model responsible for?

- A. It transports packets as datagrams along different routes to reach their destination.
- B. It manages the flow of data between two hosts to ensure that the packets are correctly assembled and delivered to the target application.



C. It defines the protocols that are used to exchange data between networks and how host programs interact with the Application layer.

D. It deals with all aspects of the physical components of network connectivity and connects with different network types.

Correct Answer: B

---

#### QUESTION 6

What happens if the identity of a user is known?

A. If the user credentials do not match an Access Role, the system displays the Captive Portal.

B. If the user credentials do not match an Access Role, the system displays a sandbox.

C. If the user credentials do not match an Access Role, the traffic is automatically dropped.

D. If the user credentials match an Access Role, the rule is applied and traffic is accepted or dropped based on the defined action.

Correct Answer: D

---

#### QUESTION 7

You have configured SNX on the Security Gateway. The client connects to the Security Gateway and the user enters the authentication credentials. What must happen after authentication that allows the client to connect to the Security Gateway's VPN domain?

A. SNX modifies the routing table to forward VPN traffic to the Security Gateway.

B. An office mode address must be obtained by the client.

C. The SNX client application must be installed on the client.

D. Active-X must be allowed on the client.

Correct Answer: A

---

#### QUESTION 8

Which statement is TRUE of anti-spoofing?

A. Anti-spoofing is not needed when IPS software blade is enabled

B. It is more secure to create anti-spoofing groups manually

C. It is BEST Practice to have anti-spoofing groups in sync with the routing table

D. With dynamic routing enabled, anti-spoofing groups are updated automatically whenever there is a routing change



Correct Answer: C

---

### QUESTION 9

What is the BEST method to deploy Identity Awareness for roaming users?

- A. Use Office Mode
- B. Use identity agents
- C. Share user identities between gateways
- D. Use captive portal

Correct Answer: B

Using Endpoint Identity Agents give you:

1.  
User and machine identity
2.  
Minimal user intervention ?all necessary configuration is done by administrators and does not require user input.
3.  
Seamless connectivity ?transparent authentication using Kerberos Single Sign-On (SSO) when users are logged in to the domain. If you do not want to use SSO, users enter their credentials manually. You can let them save these credentials.
4.  
Connectivity through roaming ?users stay automatically identified when they move between networks, as the client detects the movement and reconnects.

Reference: <https://www.checkpoint.com/products/identity-awareness-software-blade/>

---

### QUESTION 10

What protocol is specifically used for clustered environments?

- A. Clustered Protocol
- B. Synchronized Cluster Protocol
- C. Control Cluster Protocol
- D. Cluster Control Protocol

Correct Answer: D



Reference: [https://downloads.checkpoint.com/fileserver/SOURCE/direct/ID/5990/FILE/sk31085\\_Cluster\\_Control\\_Protocol\\_Functionality.pdf](https://downloads.checkpoint.com/fileserver/SOURCE/direct/ID/5990/FILE/sk31085_Cluster_Control_Protocol_Functionality.pdf)

---

### QUESTION 11

Which of the following methods can be used to update the trusted log server regarding the policy and configuration changes performed on the Security Management Server?

- A. Save Policy
- B. Install Database
- C. Save session
- D. Install Policy

Correct Answer: D

---

### QUESTION 12

When doing a Stand-Alone Installation, you would install the Security Management Server with which other Check Point architecture component?

- A. None, Security Management Server would be installed by itself.
- B. SmartConsole
- C. SecureClient
- D. Security Gateway

Correct Answer: D

There are different deployment scenarios for Check Point software products.

Standalone Deployment - The Security Management Server and the Security Gateway are installed on the same computer or appliance.

Reference:

[https://sc1.checkpoint.com/documents/R76/CP\\_R76\\_Installation\\_and\\_Upgrade\\_GuidewebAdmin/86429.htm](https://sc1.checkpoint.com/documents/R76/CP_R76_Installation_and_Upgrade_GuidewebAdmin/86429.htm)

---

### QUESTION 13

Where can I find the file for a Gaia backup named backup\_fw on a Check Point Appliance?

- A. /var/log/CPbackup/backups/backup\_fw.tgz
- B. /var/CPbackup/backups/backup\_fw.tgz
- C. /var/log/backups/backup\_fw.tgz



D. \$CPDIR/backups/backup\_fw.tgz

Correct Answer: A

---

#### QUESTION 14

Which SmartConsole tab shows logs and detects security threats, providing a centralized display of potential attack patterns from all network devices?

- A. Gateway and Servers
- B. Logs and Monitor
- C. Manage Seeting
- D. Security Policies

Correct Answer: B

---

#### QUESTION 15

Choose what BEST describes users on Gaia Platform.

- A. There is one default user that cannot be deleted.
- B. There are two default users and one cannot be deleted.
- C. There is one default user that can be deleted.
- D. There are two default users that cannot be deleted and one SmartConsole Administrator.

Correct Answer: B

These users are created by default and cannot be deleted:

1.  
admin -- Has full read/write capabilities for all Gaia features, from the WebUI and the CLI. This user has a User ID of 0, and therefore has all of the privileges of a root user.
2.  
monitor -- Has read-only capabilities for all features in the WebUI and the CLI, and can change its own password. You must give a password for this user before the account can be used.

Reference: [https://sc1.checkpoint.com/documents/R76/CP\\_R76\\_Gaia\\_WebAdmin/73101.htm](https://sc1.checkpoint.com/documents/R76/CP_R76_Gaia_WebAdmin/73101.htm)