



156-115.77^{Q&As}

Check Point Certified Security Master

Pass CheckPoint 156-115.77 Exam with 100% Guarantee

Free Download Real Questions & Answers **PDF** and **VCE** file from:

<https://www.passapply.com/156-115-77.html>

100% Passing Guarantee
100% Money Back Assurance

Following Questions and Answers are all new published by CheckPoint Official Exam Center

-  **Instant Download** After Purchase
-  **100% Money Back** Guarantee
-  **365 Days** Free Update
-  **800,000+** Satisfied Customers





QUESTION 1

Where would you find CPU information like model, number of cores, vendor and architecture?

- A. In the file `cpuinfo` in the directory `/proc`.
- B. Right click the gateway object in Smart Dashboard and view properties
- C. WebUI
- D. `sysconfig`

Correct Answer: A

QUESTION 2

True or False: It is possible to operate a Security Gateway entirely with IPv6 addressing.

- A. True: All IPv4 features are supported in IPv6\'
- B. True: Management can occur over IPv4 or IPv6 thus all gateways can have interfaces configured with valid IP addresses of either type\'
- C. False: There are many common IPv4 features that are not supported in IPv6\'
- D. False: Management only occurs over IPv4 thus all gateways are required to have interfaces configured with valid IPv4 addresses\'

Correct Answer: D

QUESTION 3

What does `"cphwd_nat_templates_enabled=1"` do when entered into `fwkern.conf`?

- A. Disables NAT templates when SecureXL is turned on.
- B. Enables NAT templates when SecureXL is turned on.
- C. Enables NAT templates at all times.
- D. Disables NAT templates at all times.

Correct Answer: B

QUESTION 4

Which of these commands can be used to display the IPv6 routes?

- A. `show route`



B. show ipv6 route

C. show routes all

D. show route ipv6

Correct Answer: B

QUESTION 5

You want to run VPN debug that will generate both ike.elg and vpn.elg files. What is the best command that can be used to achieve this goal?

A. vpn debug ikeon

B. vpn debug on TDERR_ALL_ALL=5

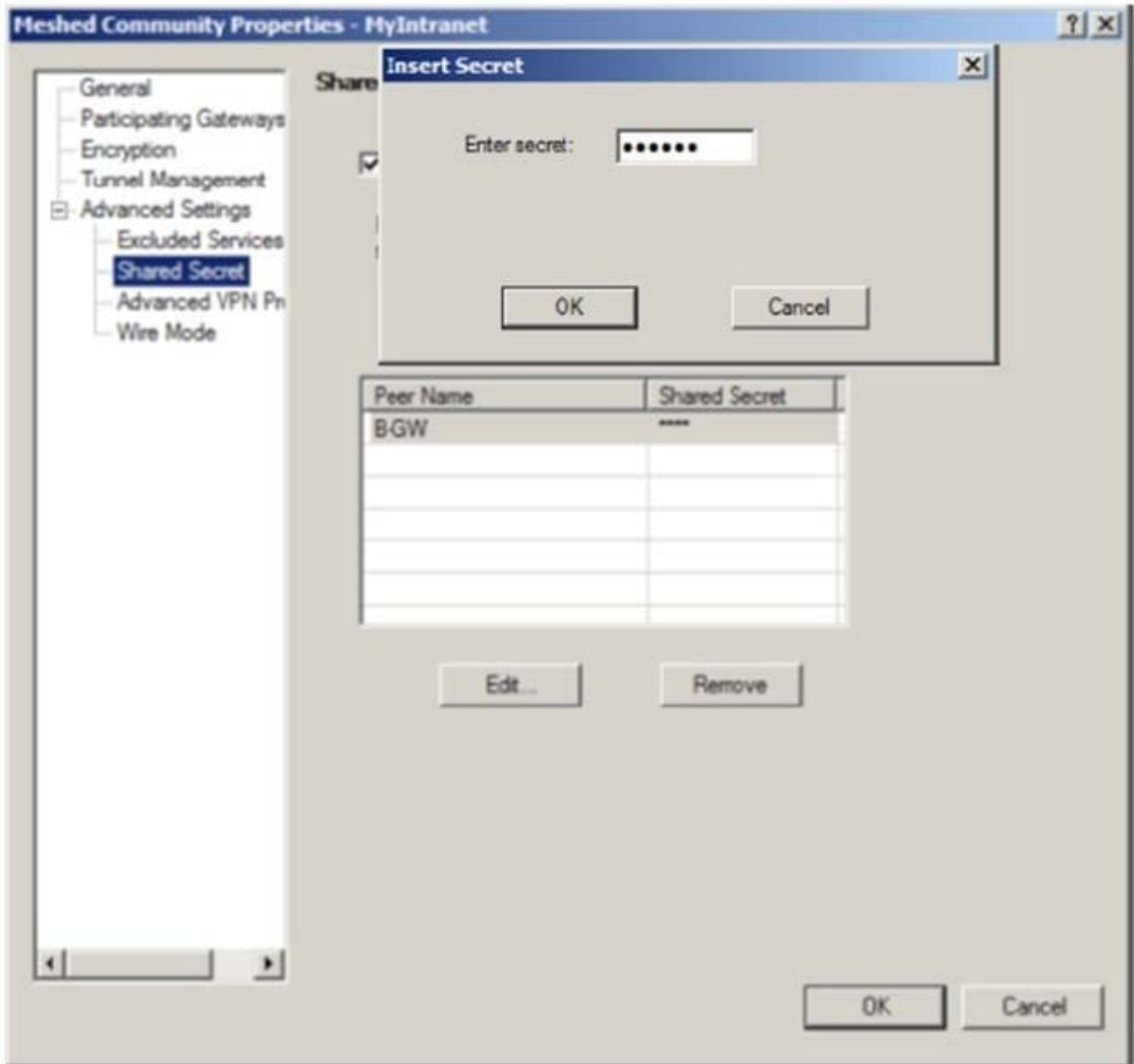
C. vpn debug trunc

D. vpn debug trunc

Correct Answer: D

QUESTION 6

You are setting up VPN between two gateways Local-GW and New-GW and want to use shared secret. For some reason New-GW is not showing up in the shared secret properties under mesh community properties. What is the most likely reason why the New-GW is not displayed?



- A. Gateway is locally managed by the same management station as Local-GW and shared secret is not supported for this configuration
- B. New-GW has to have Advanced properties > shared secret enabled.
- C. You need to install database by selecting Policy > Install database before gateway can be added.
- D. Gateway is 600 appliance and does not support "shared secret" option.

Correct Answer: A



QUESTION 7

A system administrator wants to convert an IPv6 gateway from a standard gateway into a gateway running VSX mode. What does he need to consider?

- A. It is not possible to convert a gateway with IPv6 enabled to VSX mode.
- B. There needs to be proper IPv6 routing setup.
- C. At least two interfaces need to be configured with IPv6.
- D. Policy needs to be properly applied to the gateway before converting the system to VSX mode.

Correct Answer: A

QUESTION 8

How to check the overall SecureXL statistics:

- A. fwaccel on
- B. fwaccel stat
- C. cat /proc/ppk/statistics
- D. fwaccel conns

Correct Answer: C

QUESTION 9

What is the log file that shows the processes that participate in the tunnel initiation stage?

- A. \$FWDIR/log/ikev2.xml
- B. \$FWDIR/log/ike.xml
- C. \$FWDIR/log/vpnd.elg
- D. \$FWDIR/log/ike.elg

Correct Answer: C

QUESTION 10

what command other than fw ctl pstat, will display your peak concurrent connections?

- A. fw ctl get int fw_peak_connections
- B. netstat -ni



C. fw tab -t connections -s

D. top

Correct Answer: C

QUESTION 11

You are troubleshooting your VPN and are reviewing the output of your command fw monitor, shown below. What can you determine from the following output?



```
[vs_0][fw_0] eth1:i[52]: 10.10.10.86 -> 192.168.10.4 (TCP) len=52 id=19290
TCP: 60340 -> 21 .S... seq=c6a0789f ack=00000000
[vs_0][fw_0] eth1:I[52]: 10.10.10.86 -> 192.168.10.4 (TCP) len=52 id=19290
TCP: 60340 -> 21 .S... seq=c6a0789f ack=00000000
[vs_0][fw_0] eth0:o[52]: 10.10.10.86 -> 192.168.10.4 (TCP) len=52 id=19290
TCP: 60340 -> 21 .S... seq=c6a0789f ack=00000000
[vs_0][fw_0] eth0:O[52]: 172.26.68.86 -> 192.168.10.4 (TCP) len=52 id=19290
TCP: 60340 -> 21 .S... seq=c6a0789f ack=00000000
[vs_0][fw_0] eth1:i[52]: 10.10.10.86 -> 192.168.10.4 (TCP) len=52 id=19291
TCP: 60340 -> 21 .S... seq=c6a0789f ack=00000000
[vs_0][fw_0] eth1:I[52]: 10.10.10.86 -> 192.168.10.4 (TCP) len=52 id=19291
TCP: 60340 -> 21 .S... seq=c6a0789f ack=00000000
[vs_0][fw_0] eth0:o[52]: 10.10.10.86 -> 192.168.10.4 (TCP) len=52 id=19291
TCP: 60340 -> 21 .S... seq=c6a0789f ack=00000000
[vs_0][fw_0] eth0:O[52]: 172.26.68.86 -> 192.168.10.4 (TCP) len=52 id=19291
TCP: 60340 -> 21 .S... seq=c6a0789f ack=00000000
```

©2014 Check Point Software Technologies Ltd.

19

- A. The fw monitor command cannot display the relevant information since it is encrypted traffic
- B. NAT is not being applied to the IP address 10.10.10.86
- C. There is no issue, since the traffic is being seen at all points in the inspection kernel
- D. Traffic is not being encrypted

Correct Answer: D

QUESTION 12

You issue the command fwaccel stat and see the following: What is a possible reason that the "accept templates" is disabled?



```
[Expert@SPLAT1]# fwaccel stat
Accelerator Status : on
Accept Templates   : disabled by Firewall
                   : disabled from rule #1
Drop Templates     : disabled
NAT Templates      : disabled by user

Accelerator Features : Accounting, NAT, Cryptography, Routing,
                     HasClock, Templates, Synchronous, IdleDetection,
                     Sequencing, TcpStateDetect, AutoExpire,
                     DelayedNotif, TcpStateDetectV2, Cpls, McastRouting,
                     WireMode, DropTemplates, NatTemplates,
                     Streaming, MultiFW, AntiSpoofing, ViolationStats,
                     Nac, AsynchronousNotif, ERDOS, McastRoutingV2
Cryptography Features : Tunnel, UDPEncapsulation, MD5, SHA1, NULL,
                       3DES, DES, CAST, CAST-40, AES-128, AES-256,
                       ESP, LinkSelection, DynamicVPN, NatTraversal,
                       EncRouting, AES-XCBC, SHA256

[Expert@SPLAT1]# █
```

©2014 CheckPoint Software Technologies Ltd. 15

- A. Rule one is a drop rule.
- B. Rule one uses static NAT.
- C. Rule one contains a time object.
- D. Your administrator has not enabled templating.

Correct Answer: C

QUESTION 13

What will be the outcome if you set the kernel parameters `cphwd_nat_templates_enabled` and `cphwd_nat_templates_support`?

- A. This would enable Hide NAT support.
- B. These parameters are mutually exclusive and cannot be used at the same time.
- C. This would enable SecureXL NAT templates.
- D. These are not valid parameters.

Correct Answer: C

QUESTION 14



Which is NOT a valid upgrade method in an R77 GAIa ClusterXL deployment?

- A. Optimal Service Upgrade
- B. Full Connectivity Upgrade
- C. Minimal Effort Upgrade
- D. Automatic Incremental Upgrade

Correct Answer: D

QUESTION 15

You are configuring dynamic routing on Secure Platform, as the administrator you run the command `pro enable` and reboot. You are confident that your configuration has been done correctly. When you check, you find the dynamic routing daemon has not started. What is the likely cause of this issue?

- A. Secure Platform does not support dynamic routing.
- B. You need to apply the license and push the policy.
- C. Dynamic routing needs to be enabled in `cpconfig`.
- D. You must push the policy after your reboot.

Correct Answer: B

[Latest 156-115.77 Dumps](#)

[156-115.77 Study Guide](#)

[156-115.77 Exam Questions](#)