



010-151^{Q&As}

Supporting Cisco Data Center System Devices

Pass Cisco 010-151 Exam with 100% Guarantee

Free Download Real Questions & Answers **PDF** and **VCE** file from:

<https://www.passapply.com/010-151.html>

100% Passing Guarantee
100% Money Back Assurance

Following Questions and Answers are all new published by Cisco
Official Exam Center

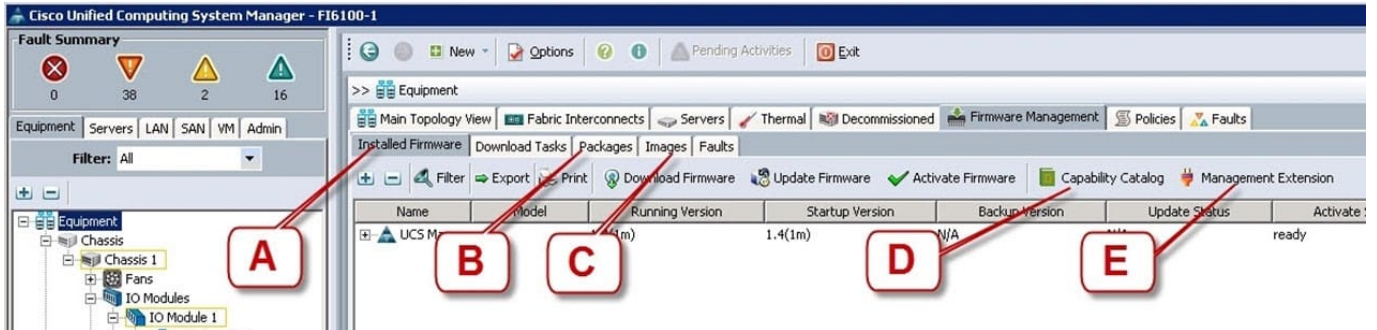
-  **Instant Download** After Purchase
-  **100% Money Back** Guarantee
-  **365 Days** Free Update
-  **800,000+** Satisfied Customers





QUESTION 1

Refer to the exhibit.



Where is the best place to find the B200 BIOS version used in a specific Cisco UCS Manager version?

- A. A - Installed Firmware
- B. B - Packages
- C. C - Images
- D. D - Capability Catalog
- E. E - Management Extension

Correct Answer: B

QUESTION 2

Which SAN protocol uses Ethernet network without IP encapsulation?

- A. iFCP
- B. FCP
- C. iSCSI
- D. FCoE
- E. FC

Correct Answer: D

QUESTION 3



What do the small form-factor, x86 64-bit blade servers reside in Cisco branch-office router?

- A. Cisco UCS E-Series Servers
- B. Cisco UCS S-Series Storage Servers
- C. Cisco UCS Blade Servers
- D. Cisco UCS C-Series Rack-Mount Servers

Correct Answer: A

Reference: <https://www.cisco.com/c/en/us/products/collateral/servers-unified-computing/ucs-e-series-servers/datasheet-c78-737706.pdf> page 3

QUESTION 4

Which two statements about the Cisco Nexus 5596UP switch are true? (Choose two.)

- A. Its power supplies and fan trays are hot-swappable.
- B. It supports unified ports.
- C. It is offered in a one-rack-unit form factor.
- D. It has one expansion slot.
- E. It supports up to 96 10G BASE-T ports.

Correct Answer: AB

QUESTION 5

Which type of connection across the network does a SAN allow for multiple servers to access an unlimited amount of storage devices?

- A. any-to-many
- B. many-to-any
- C. any-to-any
- D. any-to-one
- E. one-to-any
- F. one-to-one

Correct Answer: C



QUESTION 6

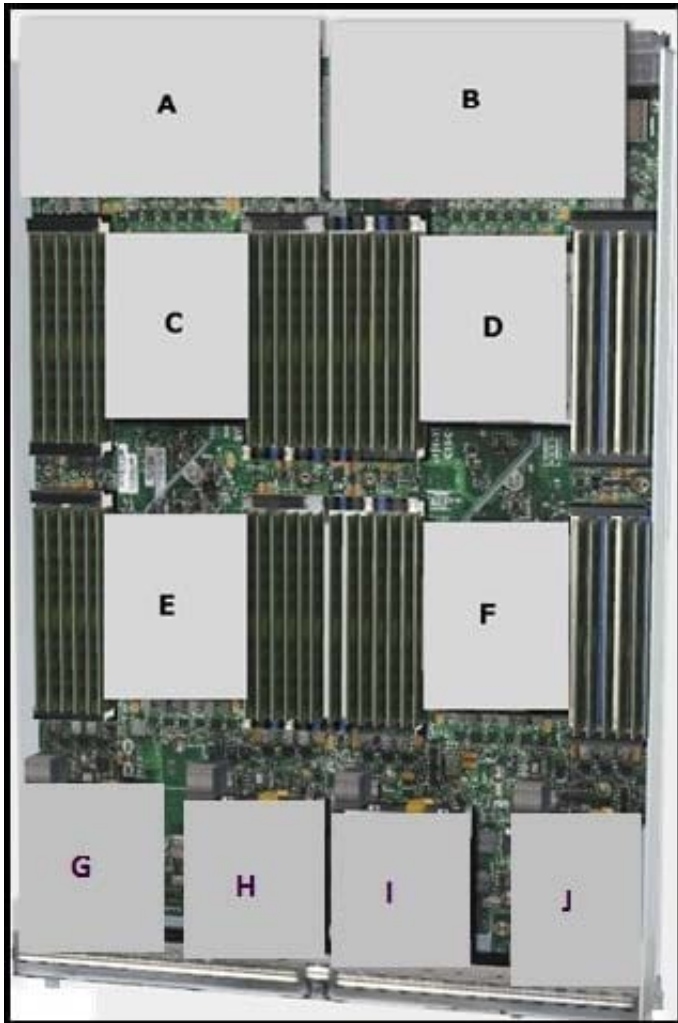
Which method does FCIP use to enable connectivity of geographically distributed Fibre Channel SANs over IP?

- A. routing
- B. tunneling
- C. handshaking
- D. transporting

Correct Answer: B

QUESTION 7

Refer to the exhibit.



Which item does A represent?

- A. Emulex Adapter Card for Cisco UCS B420 M3 Blade Servers



- B. Virtual Interface Card for Cisco UCS B420 M3 Blade Servers
- C. mLOM for Cisco UCS B420 M3 Blade Servers
- D. Virtual Emulex Adapter Card for Cisco UCS B420 M3 Blade Servers
- E. SuperCap module for Cisco UCS B420 M3 Blade Servers

Correct Answer: C

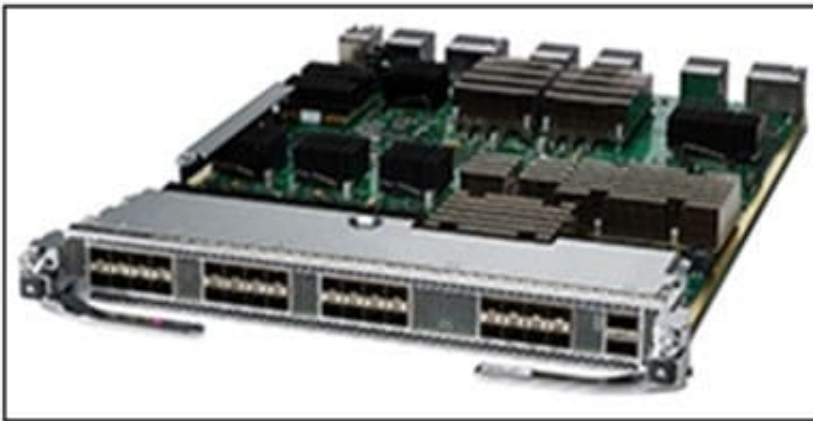
QUESTION 8

Which statement is true about cloud computing?

- A. It provides self-service, on-demand provisioning and a billing for corporate usage only.
- B. Users usually own and maintain their own IT infrastructure and facility.
- C. It provides end-to-end server, application network service, and storage virtualization.
- D. It increases total cost of ownership.

Correct Answer: C

QUESTION 9



Refer to the exhibit. What is the name of this Cisco MDS 9700 Series network module?

- A. Cisco MDS 9700 48-port 16-Gbps switching module
- B. Cisco MDS 9700 48-port 32-Gbps Fibre Channel switching module
- C. Cisco MDS 48-Port 10-Gbps Fibre Channel over Ethernet module
- D. Cisco MDS 24-/10-port SAN Extension module

Correct Answer: D



Reference: https://www.cisco.com/c/en/us/td/docs/switches/datacenter/mds9000/hw/9700/mds_9700_hig.pdf page 47

QUESTION 10

Which RAID level fault tolerance allows two disk failures?

- A. RAID 1
- B. RAID 4
- C. RAID 5
- D. RAID 6

Correct Answer: D

Reference: <https://www.promax.com/blog/how-many-drives-can-fail-in-a-raid-configuration>

QUESTION 11

When activating the firmware via UCSM which two firmware versions must be activated at the same time?

- A. UCS Manager and System
- B. UCS Manger and Kernel
- C. CIMC and Kernel
- D. System and Kernel

Correct Answer: D

Reference:

https://www.cisco.com/c/en/us/td/docs/unified_computing/ucs/ucs-manager/GUI-User-Guides/Fifirmware-Mgmt/3-1/b_UCSM_GUI_Fifirmware_Management_Guide_3_1/

[b_UCSM_GUI_Fifirmware_Management_Guide_3_1_chapter_011.html](https://www.cisco.com/c/en/us/td/docs/unified_computing/ucs/ucs-manager/GUI-User-Guides/Fifirmware-Mgmt/3-1/b_UCSM_GUI_Fifirmware_Management_Guide_3_1_chapter_011.html)

QUESTION 12

The Ethernet specification details several different fiber optic media types. What is the wire transmission speed for 100BASE-FX Ethernet?

- A. 10 Mb/s
- B. 100 Mb/s
- C. 1000 Mb/s
- D. 10000 Mb/s



Correct Answer: B

QUESTION 13

Which two statements about the Ethernet media are true? (Choose two.)

- A. A twisted-pair cable system has each pair of wires twisted together to reduce electromagnetic interference.
- B. Compared to multimode fiber, the single-mode fiber is designed for shorter distances with higher cost.
- C. 40 Gigabit Ethernet twinax cables deploy Enhanced Quad Small Form Factor Pluggable (QSFP+) connectors.
- D. The twinax cables can be found in either a shielded twisted-pair or an unshielded twisted-pair variation.
- E. A passive twinax cable can carry an Ethernet signal over 5m.

Correct Answer: AC

QUESTION 14

Which command syntax is correct to reset the admin password when the switch is in the kickstart prompt? switch(boot)#

- A. exec -> admin-password
- B. connect local-mgmt -> admin-password
- C. configure terminal -> admin-password
- D. connect nxos -> admin-password
- E. admin-password

Correct Answer: C

QUESTION 15

Which three firmware components does the Host Upgrade Utility upgrade? (Choose three.)

- A. Fabric Interconnect firmware
- B. LAN on Motherboard
- C. Cisco UCS Manager



D. CIMC

E. System BIOS

Correct Answer: BDE

[010-151 PDF Dumps](#)

[010-151 Practice Test](#)

[010-151 Exam Questions](#)