



VCS-279^{Q&As}

Administration of Veritas NetBackup 8.1.2 and NetBackup Appliances
3.1.2

Pass Veritas VCS-279 Exam with 100% Guarantee

Free Download Real Questions & Answers **PDF** and **VCE** file from:

<https://www.passapply.com/vcs-279.html>

100% Passing Guarantee
100% Money Back Assurance

Following Questions and Answers are all new published by Veritas
Official Exam Center

- ⚙️ **Instant Download** After Purchase
- ⚙️ **100% Money Back** Guarantee
- ⚙️ **365 Days** Free Update
- ⚙️ **800,000+** Satisfied Customers





QUESTION 1

What is the maximum age of the host's Certificate Revocation List (CRL) before communication with the host is prevented?

- A. 48 hours
- B. 5 days
- C. 7 days
- D. 30 days

Correct Answer: C

QUESTION 2

An administrator is adding a new media server appliance to an existing NetBackup appliance master server.

What is the correct sequence to configure the new appliance in the NetBackup domain?

- A. configure the new media server, the configuration process automatically adds the new server to the master server
- B. configure the new media server, then manually add the new media server to the master server's bp.conf
- C. configure the new media server, then add the new media server to the master server in the web console under > Host properties > Media Servers > Configure Media Server
- D. add the new media server to the master server in the Web console under Manage > Additional Servers, then configure the new media server

Correct Answer: D

QUESTION 3

A NetBackup environment with a single tape storage unit is experiencing performance issues when running full backups of a Windows file server with over a million small files. Backups for all other clients on the same network are performing adequately.

What should the administrator modify to improve performance for the client?

- A. enable Windows Change Journal
- B. modify data buffer settings for the data path
- C. enable the Use Accelerator policy attribute
- D. use Flashbackup-Windows policy type

Correct Answer: A



QUESTION 4

Refer to the Exhibit.

An administrator is trying to access client properties on the NetBackup Administration Console and receives the following message:



When checking the services on the master server, the administrator sees that the PBX service is down.

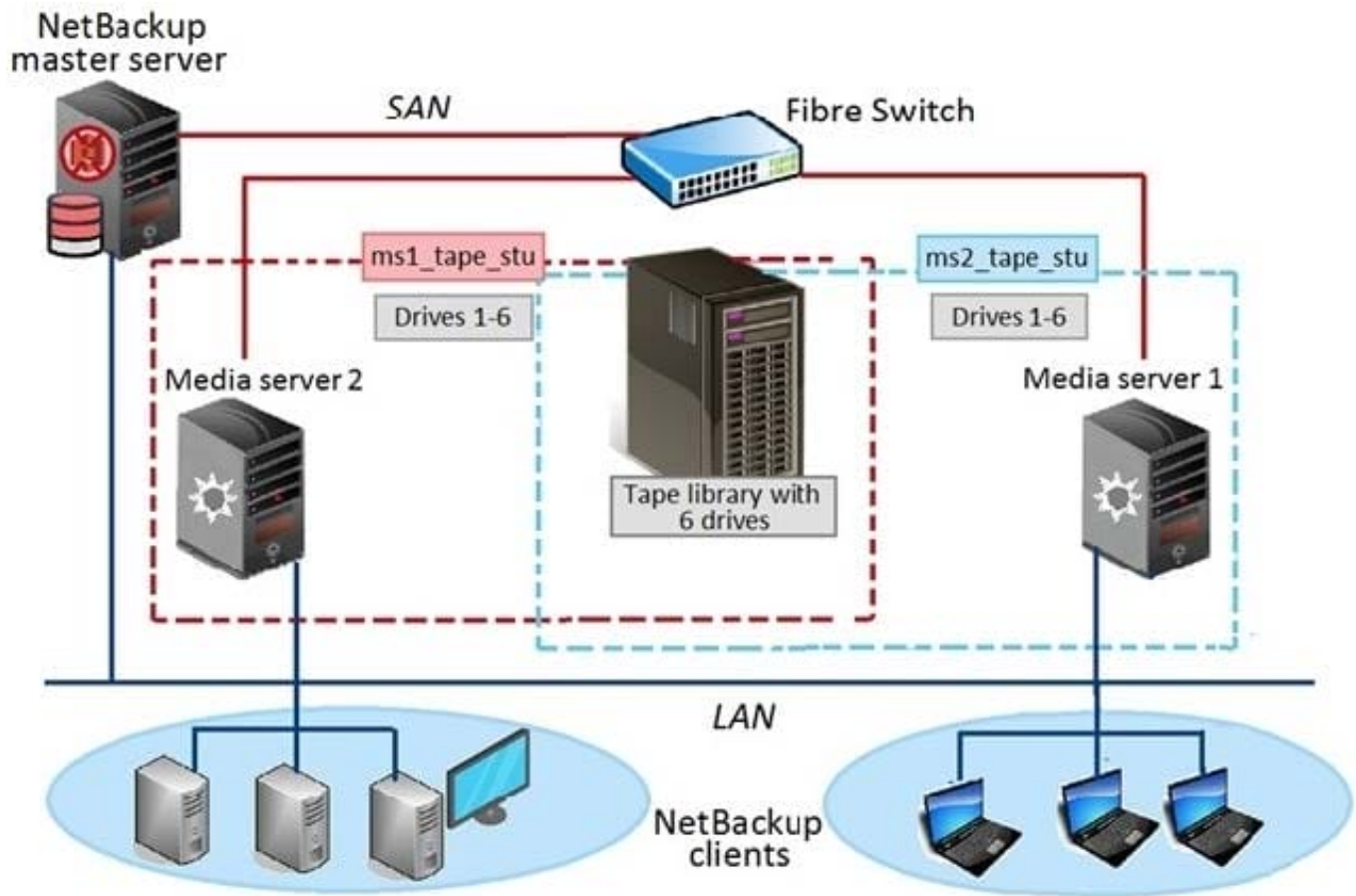
Which two commands can the administrator use to increase the PBX log level to determine the reason for the message above? (Choose two.)

- A. vxlogcfg
- B. pbxcfg
- C. vxpbx_exchanged
- D. pbx_exchange
- E. vxlogmgr

Correct Answer: AE

QUESTION 5

Refer to the exhibit.



Two media servers, sharing a library with 6 tape drives, exist in the NetBackup environment displayed in the exhibit. Both weekly Full and daily Differential Incremental backups need to run for the clients and each schedule has a different retention period. Because of network topology, some clients back up to Media server 1 and some back up to Media server 2. The environment suffers from multiple status 96 failures during the backup window.

How can the administrator minimize the number of failures?

- A. increase the "Media unmount delay"
- B. configure media multiplexing
- C. enable backups to span tape media
- D. enable media sharing

Correct Answer: D

[Latest VCS-279 Dumps](#)

[VCS-279 PDF Dumps](#)

[VCS-279 Practice Test](#)