



VCPC610^{Q&As}

VMware Certified Professional 6 - Cloud

Pass VMware VCPC610 Exam with 100% Guarantee

Free Download Real Questions & Answers **PDF** and **VCE** file from:

<https://www.passapply.com/vcpc610.html>

100% Passing Guarantee
100% Money Back Assurance

Following Questions and Answers are all new published by VMware
Official Exam Center

-  **Instant Download** After Purchase
-  **100% Money Back** Guarantee
-  **365 Days** Free Update
-  **800,000+** Satisfied Customers





QUESTION 1

An administrator is upgrading a vSphere Distributed Switch. The existing switch is version 5.0 and the administrator wants to upgrade to the latest version possible. The environment contains several ESXi 5.1 hosts.

Which two options are available to ensure that the upgraded switch will be compatible with these hosts? (Choose two.)

- A. Upgrade the vSphere Distributed Switch to 5.5
- B. Upgrade the ESXi 5.1 hosts to version 5.5, then upgrade the vSphere Distributed Switch to 5.5
- C. Upgrade the vSphere Distributed Switch to 5.1
- D. Upgrade the ESXi host switches to 5.5, then upgrade the vSphere Distributed Switch to 5.5

Correct Answer: BC

QUESTION 2

Which three types of Compute Resources can vCloud Automation Center use to provision machines? (Choose three.)

- A. ESX or ESXi host or cluster
- B. Virtual datacenter
- C. Amazon region
- D. Amazon AWS
- E. vCloud Director

Correct Answer: ABC

QUESTION 3

An administrator configures Cloud Registration to a vSphere Cloud type on the vCloud Connector node. Which value should the administrator use for the Cloud URL?

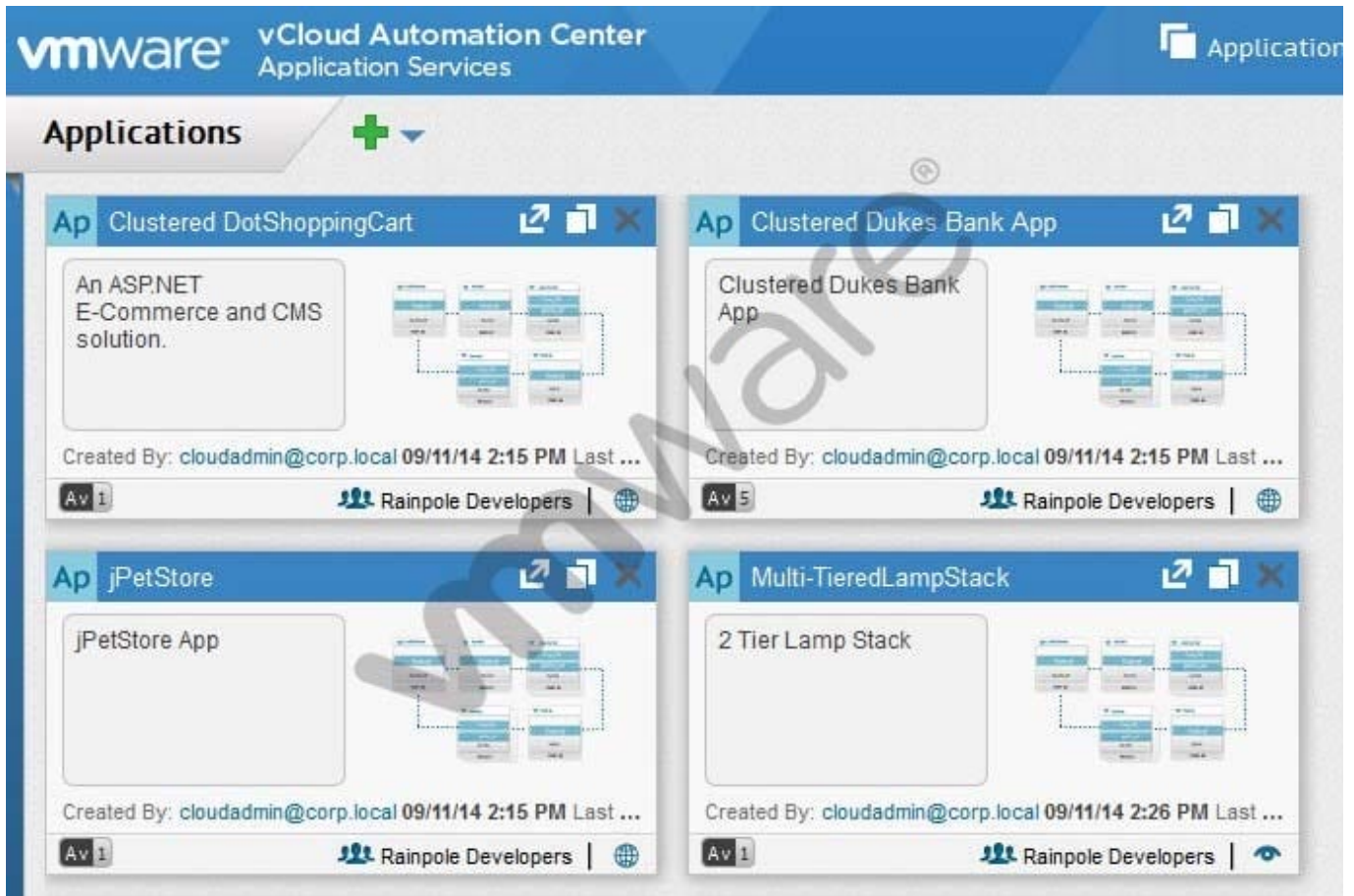
- A. the IP address or FQDN of the vCenter Server
- B. the host name of the vCloud Connector Server
- C. the IP address or FQDN of vShield Manager
- D. the host name of the vCloud Director cell

Correct Answer: A

QUESTION 4



Refer to the Exhibit.



A manager in the administration group cannot access a new application blueprint named "Multi-TieredLampStack". Access should be restricted to applications used by the administration group.

What should be done to grant access?

- A. Publish the application blueprint.
- B. Add a new application version and grant permissions to the administration group.
- C. In the application, set Sharing to Shared.
- D. Add the administrator to the Rainpole Developers group.

Correct Answer: C

QUESTION 5

A vSphere administrator is unable to power on a virtual machine that resides in a HA cluster. The administrator determines that the virtual machine has a larger reservation than existing virtual machines.

Which cluster setting should the administrator modify to enable the virtual machine to power on?

- A. Admission control policy



- B. Virtual machine monitoring setting
- C. Virtual machine restart priority
- D. Host isolation response setting

Correct Answer: A

[Latest VCPC610 Dumps](#)

[VCPC610 VCE Dumps](#)

[VCPC610 Practice Test](#)