



# VCPC610<sup>Q&As</sup>

VMware Certified Professional 6 - Cloud

## Pass VMware VCPC610 Exam with 100% Guarantee

Free Download Real Questions & Answers **PDF** and **VCE** file from:

<https://www.passapply.com/vcpc610.html>

100% Passing Guarantee  
100% Money Back Assurance

Following Questions and Answers are all new published by VMware  
Official Exam Center

- ⚙ **Instant Download** After Purchase
- ⚙ **100% Money Back** Guarantee
- ⚙ **365 Days** Free Update
- ⚙ **800,000+** Satisfied Customers





### QUESTION 1

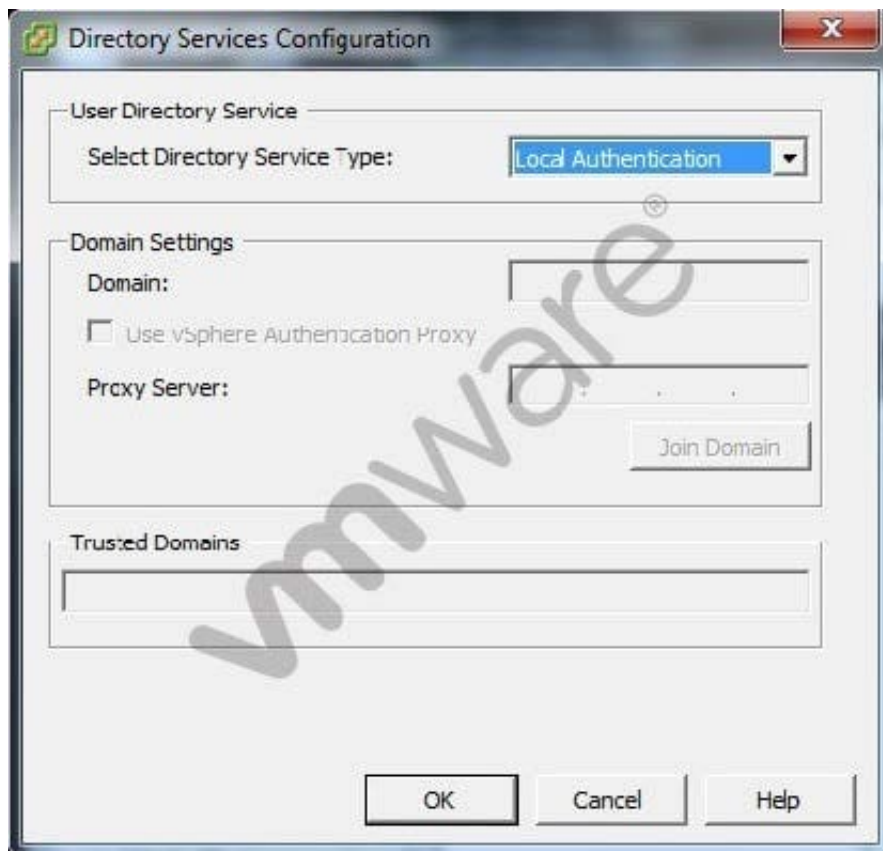
When deploying a multi-machine blueprint that includes two web servers that should both service client requests, what type of NSX for vSphere service is deployed?

- A. A NSX for vSphere Edge Services Gateway configured for static routing.
- B. A NSX for vSphere Edge Services Gateway configured for load balancing.
- C. A NSX for vSphere Edge Services Gateway configured for dynamic routing.
- D. A NSX for vSphere Edge Services Gateway configured for load sharing.

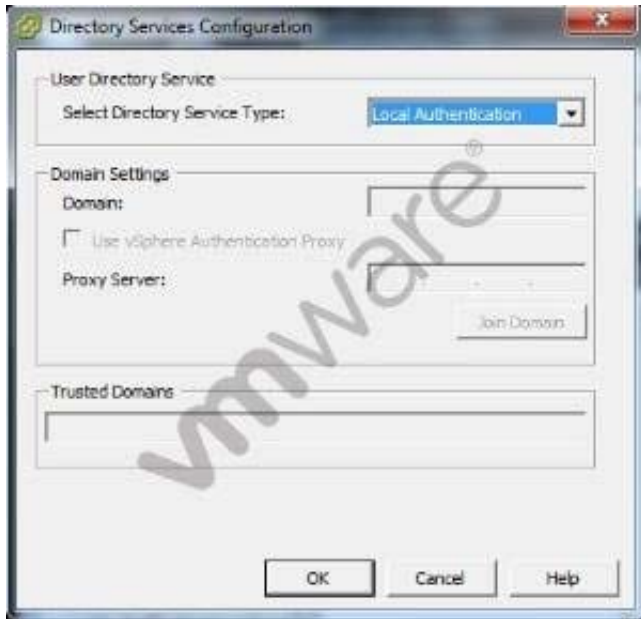
Correct Answer: B

### QUESTION 2

Refer to the Exhibit.



The vSphere administrator is configuring directory services for a host, as shown in the exhibit:



What should the vSphere administrator do to configure the host to use CAM services?

- A. Check the Use vSphere Authentication Proxy checkbox.
- B. Set Select Directory Service Type to "CAM services".
- C. Specify "CAM\$" for the Domain.
- D. Set Trusted Domains to "cam\name.tld" where name.tld is the domain that the host is joining.

Correct Answer: A

### QUESTION 3

Refer to the Exhibit.

4 / 5



- B. The DSN was configured using a 32-bit ODBC connection.
- C. Update Manager does NOT support the use of a remote database.
- D. Port 9087 is being blocked by Windows Firewall on the Update Manager server.

Correct Answer: A

---

#### QUESTION 5

A vSphere administrator is attempting to migrate a virtual machine, but the progress bar for the migration remains at 10%.

Which issue could be preventing the vMotion migration?

- A. A networking problem between the source and destination hosts exists at the physical layer.
- B. The virtual machine is not on shared storage visible to the source and destination hosts.
- C. The vMotion migration priority for this migration was set to High.
- D. The vMotion network is saturated.

Correct Answer: A

[VCPC610 PDF Dumps](#)

[VCPC610 VCE Dumps](#)

[VCPC610 Practice Test](#)