



TEAS-SECTION-2^{Q&As}

Test of Essential Academic Skills - Sentence Correction

Pass TEAS TEAS-SECTION-2 Exam with 100% Guarantee

Free Download Real Questions & Answers **PDF** and **VCE** file from:

<https://www.passapply.com/teas-section-2.html>

100% Passing Guarantee
100% Money Back Assurance

Following Questions and Answers are all new published by TEAS
Official Exam Center

- ⚙️ **Instant Download** After Purchase
- ⚙️ **100% Money Back** Guarantee
- ⚙️ **365 Days** Free Update
- ⚙️ **800,000+** Satisfied Customers



**QUESTION 1**

On each side of the body, the brachiocephalic veins are formed by the union of which two veins?

- A. external jugular veins and subclavian veins
- B. external jugular and internal jugular veins
- C. common carotid and subclavian veins
- D. internal jugular veins and subclavian veins

Correct Answer: D

QUESTION 2

	B	g
B	BB	Bg
g	Bg	gg

Which word describes the allele for green eyes?

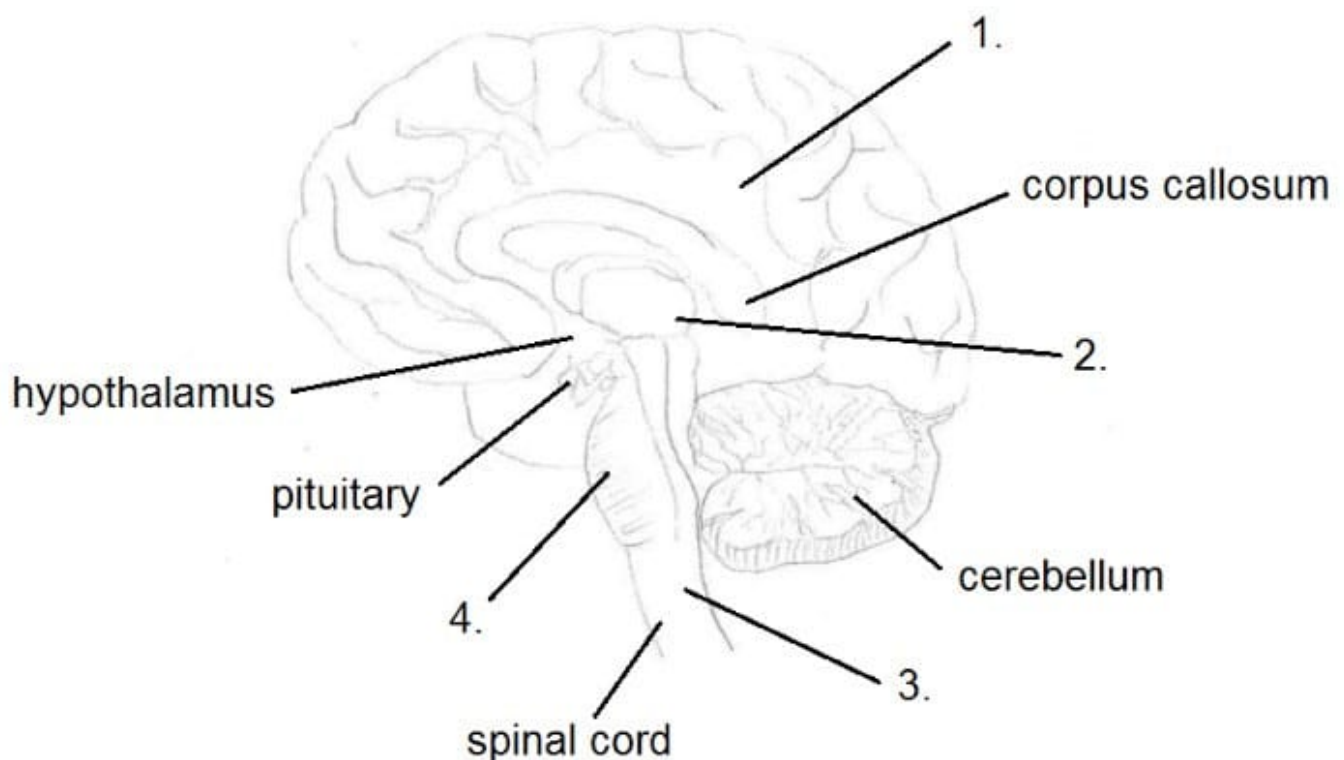
B = alleles for brown eyes; g = alleles for green eyes

- A. homozygous
- B. dominant
- C. heterozygous
- D. recessive

Correct Answer: D

Recessive alleles are represented by lower case letters, while dominant alleles are represented by upper case letters.

QUESTION 3



In this diagram of the brain, some of the labels are missing.

What should the labels be?

- A. 1. cerebral cortex, 2. thalamus, 3. medulla oblongata, 4. pons
- B. 1. cerebellum, 2. grey matter, 3. thalamus, 4. hindbrain
- C. 1. forebrain, 2. midbrain, 3. brain stem, 4. pons
- D. 1. hippocampus, 2. fornix, 3. midbrain, 4. pons

Correct Answer: A

QUESTION 4

Which of these statements regarding isotopes is not true?

- A. Isotopes of an element have the same chemical and physical properties.
- B. Isotopes are atoms of the same element with different mass numbers.
- C. Isotopes have the same number of protons and electrons in each atom, but a different number of neutrons in their nucleus.
- D. Radio-isotopes are isotopes with unstable nuclei that emit radiations.

Correct Answer: A



QUESTION 5

Which of these is not regulated by the parasympathetic nervous system?

- A. increased glandular activity
- B. slowed heart rate
- C. increased intestinal activity
- D. constricted blood vessels

Correct Answer: D

[TEAS-SECTION-2 PDF
Dumps](#)

[TEAS-SECTION-2 Practice
Test](#)

[TEAS-SECTION-2 Study
Guide](#)