



# PL-400<sup>Q&As</sup>

Microsoft Power Platform Developer

## Pass Microsoft PL-400 Exam with 100% Guarantee

Free Download Real Questions & Answers **PDF** and **VCE** file from:

<https://www.passapply.com/pl-400.html>

100% Passing Guarantee  
100% Money Back Assurance

Following Questions and Answers are all new published by Microsoft  
Official Exam Center

- ⚙️ **Instant Download** After Purchase
- ⚙️ **100% Money Back** Guarantee
- ⚙️ **365 Days** Free Update
- ⚙️ **800,000+** Satisfied Customers





## QUESTION 1

### HOTSPOT

A company has a canvas app that has a screen with a gallery of contacts.

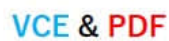
Users must be able to search the gallery by last name, email address, and country/region. They must also be able to sort by last name, followed by country/region.

You need to define the expression that meets the requirements.

How should you complete the expression? To answer, select the appropriate options from the answer area.

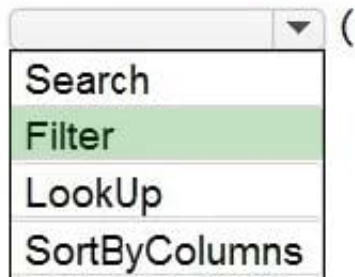
NOTE: Each correct selection is worth one point.

Hot Area:





## Answer Area



```
Contacts,  
    TextSearchBox1.Text,  
    "lastname",  
    "emailaddress1",  
    "address1_country"  
)  
    "lastname",  
    Ascending,  
    "address1_country",  
    Ascending  
)
```

### Box 1: SortByColumns

The SortByColumns function can be used to sort a table based on one or more columns.

The parameter list for SortByColumns provides the names of the columns to sort by and the sort direction per column. Sorting is performed in the order of the parameters (sorted first by the first column, then the second, and so on).

### Box 2: Filter

The Filter function finds records in a table that satisfy a formula. Use Filter to find a set of records that match one or more criteria and to discard those that don't.

---



## QUESTION 2

### HOTSPOT

You need to configure a connector for the driving record verification API.

How should you configure the system? To answer, select the appropriate options in the answer area.

NOTE: Each correct selection is worth one point.

Hot Area:

### Answer Area

#### Configuration option

Configure authentication.

#### Implementation

Basic
OAuth 2.0
API Key

#### Configuration option

Provide credentials to the API.

#### Implementation

Authentication section in the connector configuration.
Prompt when the connector is used for the 1st time.
Pass Credentials as parameters to the action being invoked in the flow or app.

Correct Answer:



## Answer Area

### Configuration option

Configure authentication.

### Implementation

Basic
OAuth 2.0
API Key

### Configuration option

Provide credentials to the API.

### Implementation

Authentication section in the connector configuration.
Prompt when the connector is used for the 1st time.
Pass Credentials as parameters to the action being invoked in the flow or app.

Box 1: OAuth 2.0 Use API keys if you expect developers to build internal applications that don't need to access more than a single user's data. Use OAuth access tokens if you want users to easily provide authorization to applications without needing to share private data or dig through developer documentation.

Requirements. Driving record verification

1.

Driving record verification must only be performed once for each candidate.

2.

Information required for driving record verification must be sent to the driving record verification service automatically after the candidate's address is verified.

3.

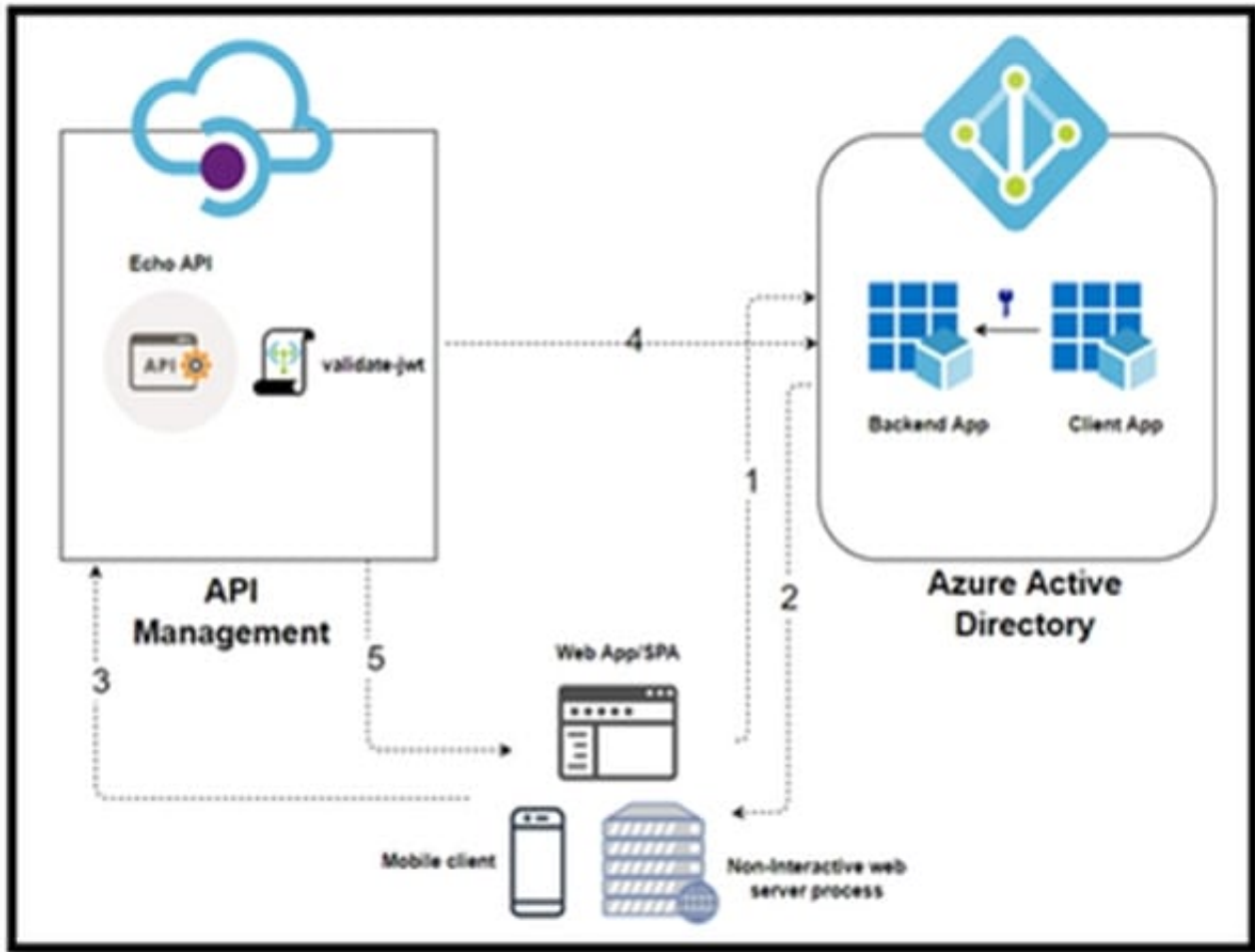
The API must return a value of either Approved or Rejected to indicate whether the candidate has met the company's requirements.

Box 2: Pass Credentials as parameters



User makes an API call with the authorization header and the token gets validated by using validate-jwt policy in APIM by Azure AD.

Note, see step 4 below.



In this Diagram we can see the OAUTH flow with API Management in which:

1.  
The Developer Portal requests a token from Azure AD using app registration client id and client secret.

2.  
In the second step, the user is challenged to prove their identity by supplying User Credentials.

3.  
After successful validation, Azure AD issues the access/refresh token.

4.  
User makes an API call with the authorization header and the token gets validated by using validate-jwt policy in APIM by Azure AD.

5.





Based on the validation result, the user will receive the response in the developer portal.

Reference:

<https://zapier.com/engineering/apikey-oauth-jwt/>

<https://techcommunity.microsoft.com/t5/azure-paas-blog/protect-api-s-using-oauth-2-0-in-apim/ba-p/2309538>

### QUESTION 3

#### HOTSPOT

Contoso, Ltd. has a database that stores proprietary stock market information that the company has accumulated over many years.

You create a RESTful service for the company that exposes specific information about stocks. You must make the service available to the company's brokers. The service must be certified by Microsoft.

You need to create a custom connector for the service APIs.

How should you configure the connector? To answer, select the appropriate options in the answer area.

NOTE: Each correct selection is worth one point.

Hot Area:

## Answer Area

### Configuration question

### Answer

Who owns the connector?

	▼
Contoso, Ltd.	
Open source	
Microsoft Corporation	

Where is the stackOwner property defined?

	▼
settings.json	
apiProperties.json	
apiDefinition.swagger.json	

Correct Answer:





## Answer Area

### Configuration question

### Answer

Who owns the connector?

	▼
Contoso, Ltd.	
Open source	
Microsoft Corporation	

Where is the stackOwner property defined?

	▼
settings.json	
apiProperties.json	
apiDefinition.swagger.json	

Box 1: Contoso, Ltd.

publisher and stackOwner properties

"publisher" is the name of your company or organization. Provide the full company name (for example, "Contoso Corporation"). This must be in alphanumeric format.

"stackOwner" is the owning company or organization of the back-end service stack that the connector is connecting to. This must be in alphanumeric format

Box 2: apiProperties.json

The publisher and stackOwner properties exist as top-level properties within the apiProperties.json file.

Reference:

<https://docs.microsoft.com/en-us/connectors/custom-connectors/certification-submission>

### QUESTION 4

#### DRAG DROP

Technicians for a company use a model-driven app on their phones to record information about service visits. Users do not have permissions to the Power Apps maker portal to create or update apps.

Technicians report issues with the model-driven app. You are unable to reproduce the issues in a development environment.

You need to provide instructions to the technicians to gather more details about the errors.



Which four actions should you recommend be performed in sequence? To answer, move the appropriate actions from the list of actions to the answer area and arrange them in the correct order.

Select and Place:

### Actions

Perform the steps to generate the errors and download the results from Monitor.

Open the app in a browser on the phone.

Open the application in a browser on a laptop computer when they return to the office.

Perform the steps to generate the errors while you monitor the technician's monitor debug session.

Add the following text to the end of the URL for the app:  
"&monitor=true"

Open the app on a phone by using Power Apps mobile.

### Answer area



Correct Answer:

### Actions

Perform the steps to generate the errors while you monitor the technician's monitor debug session.

Open the app on a phone by using Power Apps mobile.

### Answer area

Open the app in a browser on the phone.

Add the following text to the end of the URL for the app:  
"&monitor=true"

Perform the steps to generate the errors and download the results from Monitor.

Open the application in a browser on a laptop computer when they return to the office.

Step 1: Open the app in a browser on the phone.

Step 2: Add the following text to end of the URL for the app: "andmonitor=true" You can start a Monitor session from a



model-driven app. To do this, append `andmonitor=true` to the end of the URL in the browser. This displays the Monitor command on the model-driven app global command bar. Select Monitor to open a monitoring session in a new tab.

Step 3: Perform the steps to generate the errors and download the results from Monitor.

Step 4: Open the application in a browser on a laptop computer when they return to the office

References:

<https://powerapps.microsoft.com/en-us/blog/monitor-now-supports-model-driven-apps/>

---

### QUESTION 5

You need to create an application to deploy to other pharmacies. What should you do?

- A. Recreate customizations in a new environment.
- B. Create a customer connector to connect the pharmacies' systems to the company's systems.
- C. Export the solution as a managed solution.
- D. Write a Web API to move customizations.

Correct Answer: C

When you export a managed solution, it contains all the changes that have been applied for that solution into a file that you can then import into a different Dataverse environment.

Reference: <https://docs.microsoft.com/en-us/powerapps/developer/data-platform/introduction-solutions>

[PL-400 PDF Dumps](#)

[PL-400 VCE Dumps](#)

[PL-400 Braindumps](#)