



# PEGACSA72V1<sup>Q&As</sup>

Certified System Architect (CSA) 72V1

## Pass Pegasystems PEGACSA72V1 Exam with 100% Guarantee

Free Download Real Questions & Answers **PDF** and **VCE** file from:

<https://www.passapply.com/pegacsa72v1.html>

100% Passing Guarantee  
100% Money Back Assurance

Following Questions and Answers are all new published by  
Pegasystems Official Exam Center

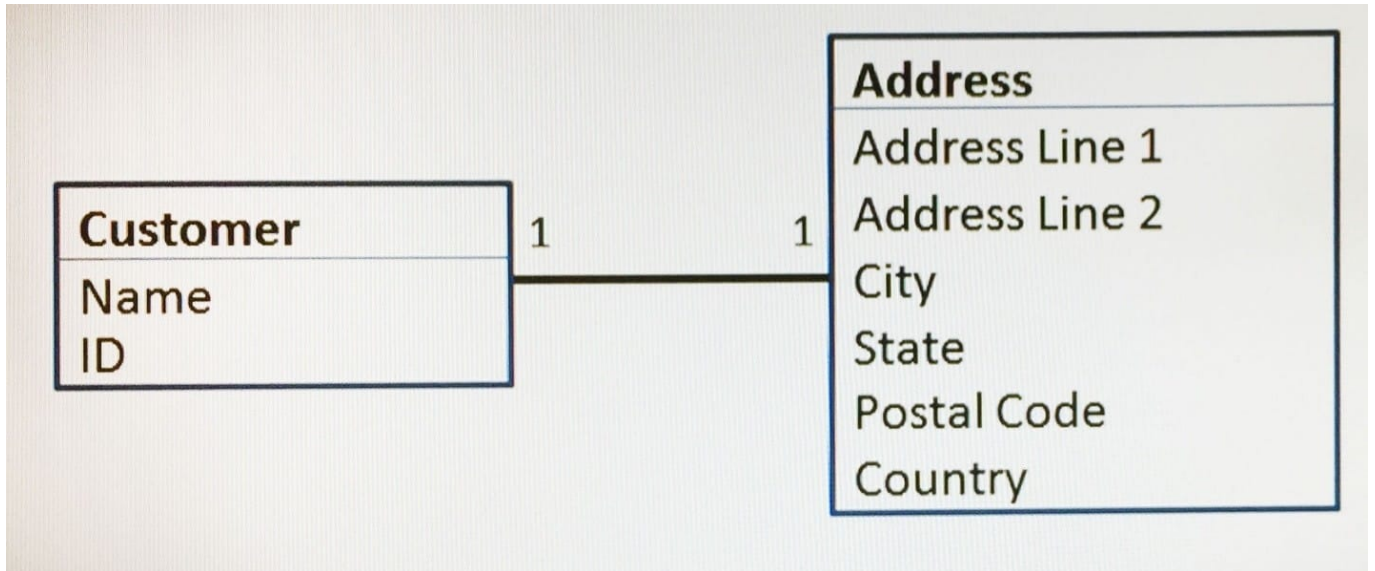
-  **Instant Download** After Purchase
-  **100% Money Back** Guarantee
-  **365 Days** Free Update
-  **800,000+** Satisfied Customers





### QUESTION 1

A customer data object references an address as depicted by the data model below. How would you define the address property in the customer class?



- A. As a single value
- B. As a page
- C. As a page list
- D. As a page group

Correct Answer: C

Reference <https://pdn.pega.com/load-data-page-property>

### QUESTION 2

You need to add a button to a user form. When the button is pressed, the application invokes a data transform, then creates a new case. How do you implement this functionality?

- A. Configure a style format for the button in the skin.
- B. Configure a mixin for the button in the skin.
- C. Configure a local action on the button control.
- D. Configure an action set on the button control.

Correct Answer: D

<https://pdn.pega.com/using-data-transform-rule-flow-action>



### QUESTION 3

Users can access an apartment search application from different devices with different screen sizes. A screen displays the photos of available properties. On a wide desktop screen, the photos are displayed in an inline format. On a smart phone, the photos should be displayed in a vertical stack.

How do you implement the screen for this requirement?

- A. Use a dynamic layout with a responsive breakpoint at smart phone screen width to change from an inline format to a stacked format.
- B. Circumstance the section rule to display the photos with different arrangements at different screen sizes.
- C. Use a column layout with a responsive breakpoint at smart phone screen width to hide the left and right columns.
- D. Circumstance the layout to display the photos with different arrangements at different screen sizes.

Correct Answer: A

Explanation: References:

---

### QUESTION 4

A form allows customers to specify the amount of a balance transfer for their credit card. The form contains two fields: one to display the available balance on the customer's credit card, and one for the user to enter the amount of the balance transfer.

You configure a validate rule to verify that the amount of a balance transfer is less than 75% of the available balance on the customer's credit card. How do you call the validate rule?

- A. From the step in the case life cycle.
- B. From the section that contains the field for entering the amount of the balance transfer
- C. From the flow action where the customer submits the form
- D. From the property used to capture the amount of the balance transfer

Correct Answer: C

---

### QUESTION 5

An insurance company offers personal property policies. Art collections and wine collections are categorized as special types of personal properties. The company employs appraisers who are qualified to perform appraisals for either art collection or wine collections. Appraisers can only perform appraisal assignments in their qualified field.

How would you configure the router so that the assignment is worked on by a qualified appraiser?

- A. Associate each appraiser to one of two work groups that correspond to the appraisal qualifications.
- B. Associate each appraiser to the appraiser work group.



C. Associate each appraiser to a work group that uses work group parameters.

D. Associate each appraiser to a work group that uses skill parameters.

Correct Answer: D

[Latest PEGACSA72V1  
Dumps](#)

[PEGACSA72V1 Practice  
Test](#)

[PEGACSA72V1  
Braindumps](#)