



PEGACSA71V1^{Q&As}

Certified System Architect (CSA) 71V1

Pass Pegasystems PEGACSA71V1 Exam with 100% Guarantee

Free Download Real Questions & Answers **PDF** and **VCE** file from:

<https://www.passapply.com/pegacsa71v1.html>

100% Passing Guarantee
100% Money Back Assurance

Following Questions and Answers are all new published by
Pegasystems Official Exam Center

-  **Instant Download** After Purchase
-  **100% Money Back** Guarantee
-  **365 Days** Free Update
-  **800,000+** Satisfied Customers





QUESTION 1

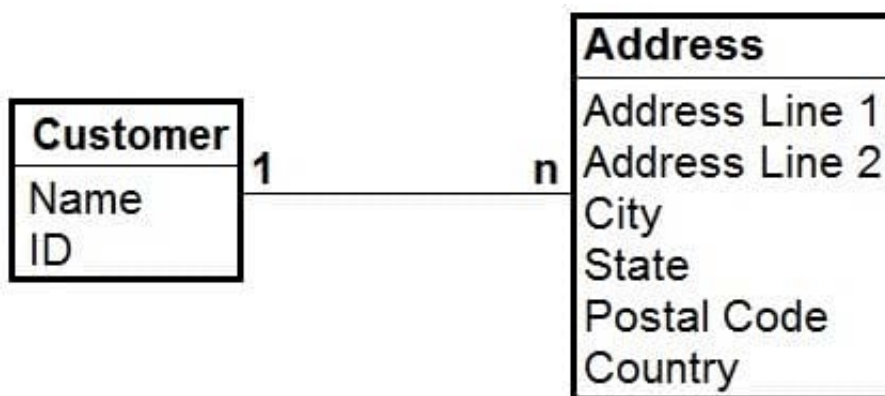
Which types of content can a system architect find on the clipboard? (Choose Two)

- A. Information about a case currently open by an end user
- B. All node-level pages created by their application
- C. Information about the case they are currently working on
- D. Information about all cases open by users

Correct Answer: BD

QUESTION 2

Given the following data model, the Address property should be defined as: A. A page



- B. A page list
- C. There is not enough Information to make this decision
- D. A value list

Correct Answer: B

QUESTION 3

It is possible for you to notify a customer (work party) if a milestone is missed, using a service level.

- A. True.
- B. False

Correct Answer: A

**QUESTION 4**

To open a bank account, an end user must identify whether they are employed full-time or part-time. In the user interface, this selection is implemented as a check box. When implementing the property referenced by the check box, the property type should be:

- A. Integer
- B. Boolean
- C. Text
- D. TrueFalse

Correct Answer: D

QUESTION 5

Which of the following configurations are not supported in a dynamic layout?

- A. Automatically change to a different layout format based on screen size
- B. Stack the fields by placing label above the value
- C. Set maximum threshold for the number of fields that a layout can contain
- D. Cell spacing between two fields

Correct Answer: D

[Latest PEGACSA71V1
Dumps](#)

[PEGACSA71V1 PDF
Dumps](#)

[PEGACSA71V1 Practice
Test](#)