



# OMG-OCUP2-INT200<sup>Q&As</sup>

OMG Certified UML Professional 2 (OCUP 2) - Intermediate Level

**Pass OMG OMG-OCUP2-INT200 Exam with 100% Guarantee**

Free Download Real Questions & Answers **PDF** and **VCE** file from:

<https://www.passapply.com/omg-ocup2-int200.html>

100% Passing Guarantee  
100% Money Back Assurance

Following Questions and Answers are all new published by OMG  
Official Exam Center

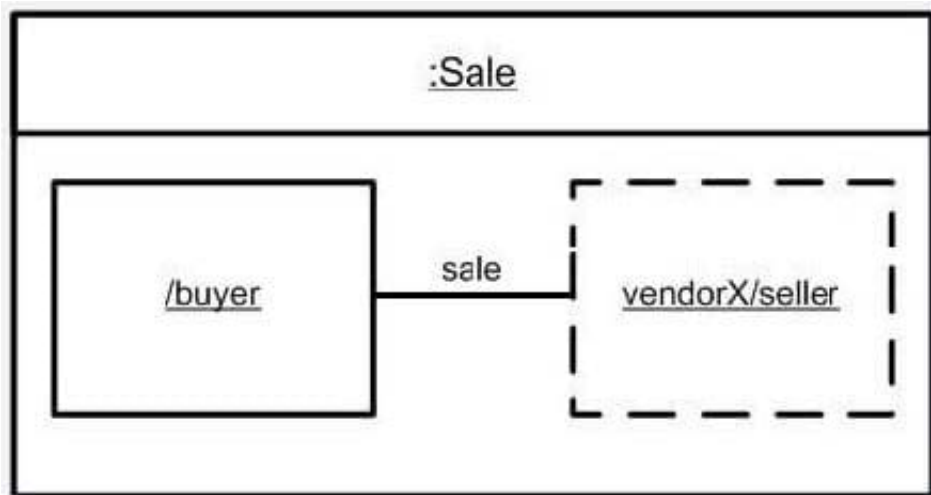
- ⚙️ **Instant Download** After Purchase
- ⚙️ **100% Money Back** Guarantee
- ⚙️ **365 Days** Free Update
- ⚙️ **800,000+** Satisfied Customers





### QUESTION 1

What is wrong with the Sale instance diagram shown in the exhibit?



- A. Buyer instance name is missing.
- B. Link name should be underlined.
- C. Sale instance name is missing.
- D. Link should be shown with a dashed line.
- E. Types of the buyer and seller parts are missing.

Correct Answer: B

### QUESTION 2

What kind of element is a central buffer?

- A. object node
- B. control node
- C. action
- D. behavior
- E. activity
- F. state

Correct Answer: A



### QUESTION 3

What does a run-to-completion processing for state machines mean?

- A. Interrupts are disabled while the state machine is running.
- B. No other event will be processed until the current event is fully processed.
- C. The thread executing the state machine cannot be pre-empted by the scheduler.
- D. The executions of orthogonal regions are serialized.

Correct Answer: B

### QUESTION 4

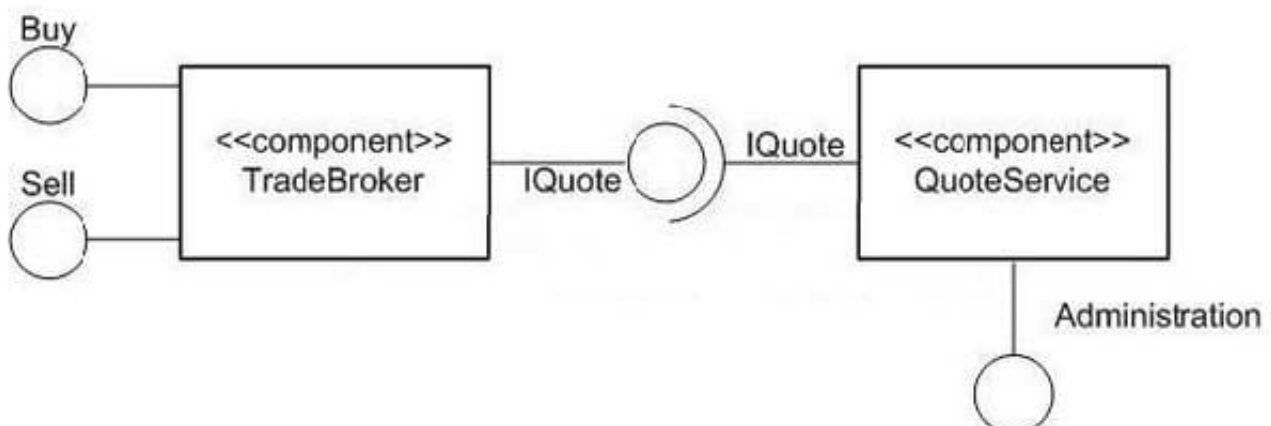
If a central buffer has one value and three outgoing arrows go to three actions, how many of the actions will receive the value?

- A. two
- B. any number
- C. one
- D. none

Correct Answer: C

### QUESTION 5

Refer to the exhibit. How many interfaces does the TradeBroker component make visible to its clients?



- A. 0
- B. 1



C. 2

D. 4

E. 3

Correct Answer: C

[Latest OMG-OCUP2-INT200 Dumps](#)

[OMG-OCUP2-INT200 Study Guide](#)

[OMG-OCUP2-INT200 Braindumps](#)