



OMG-OCUP2-INT200^{Q&As}

OMG Certified UML Professional 2 (OCUP 2) - Intermediate Level

Pass OMG OMG-OCUP2-INT200 Exam with 100% Guarantee

Free Download Real Questions & Answers **PDF** and **VCE** file from:

<https://www.passapply.com/omg-ocup2-int200.html>

100% Passing Guarantee
100% Money Back Assurance

Following Questions and Answers are all new published by OMG
Official Exam Center

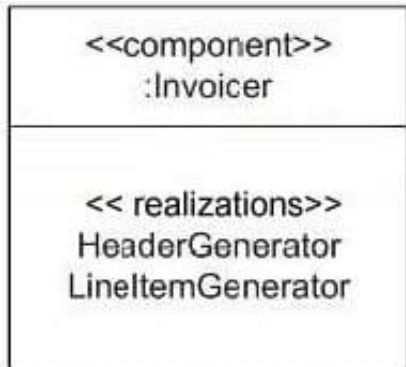
- ⚙️ **Instant Download** After Purchase
- ⚙️ **100% Money Back** Guarantee
- ⚙️ **365 Days** Free Update
- ⚙️ **800,000+** Satisfied Customers





QUESTION 1

What most accurately describes the semantics modeled by the exhibit?



- A. HeaderGenerator and LineItemGenerator are Invoicer ports.
- B. An Invoicer component is composed of HeaderGenerator component and a LineItemGenerator component.
- C. HeaderGenerator and LineItemGenerator realize Invoicer.
- D. Invoicer realizes Header Generator and Line Item Generator

Correct Answer: C

QUESTION 2

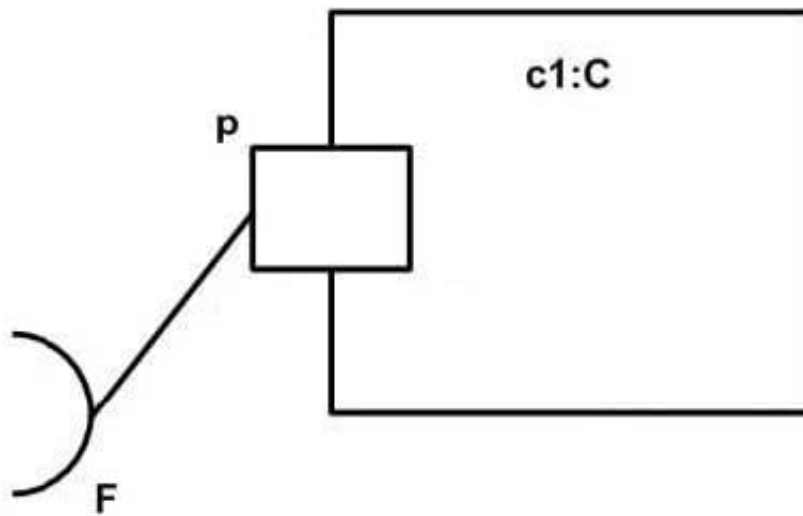
What is NOT a correct assertion?

- A. A model element can be extended by several stereotypes at the same time.
- B. Un-applying a profile from a model deleted stereotypes extending the model.
- C. Stereotypes extending a model element can be retracted at any time.
- D. Stereotypes extending a model element are immutable.

Correct Answer: D

QUESTION 3

What does the composite structure notation in the exhibit mean?

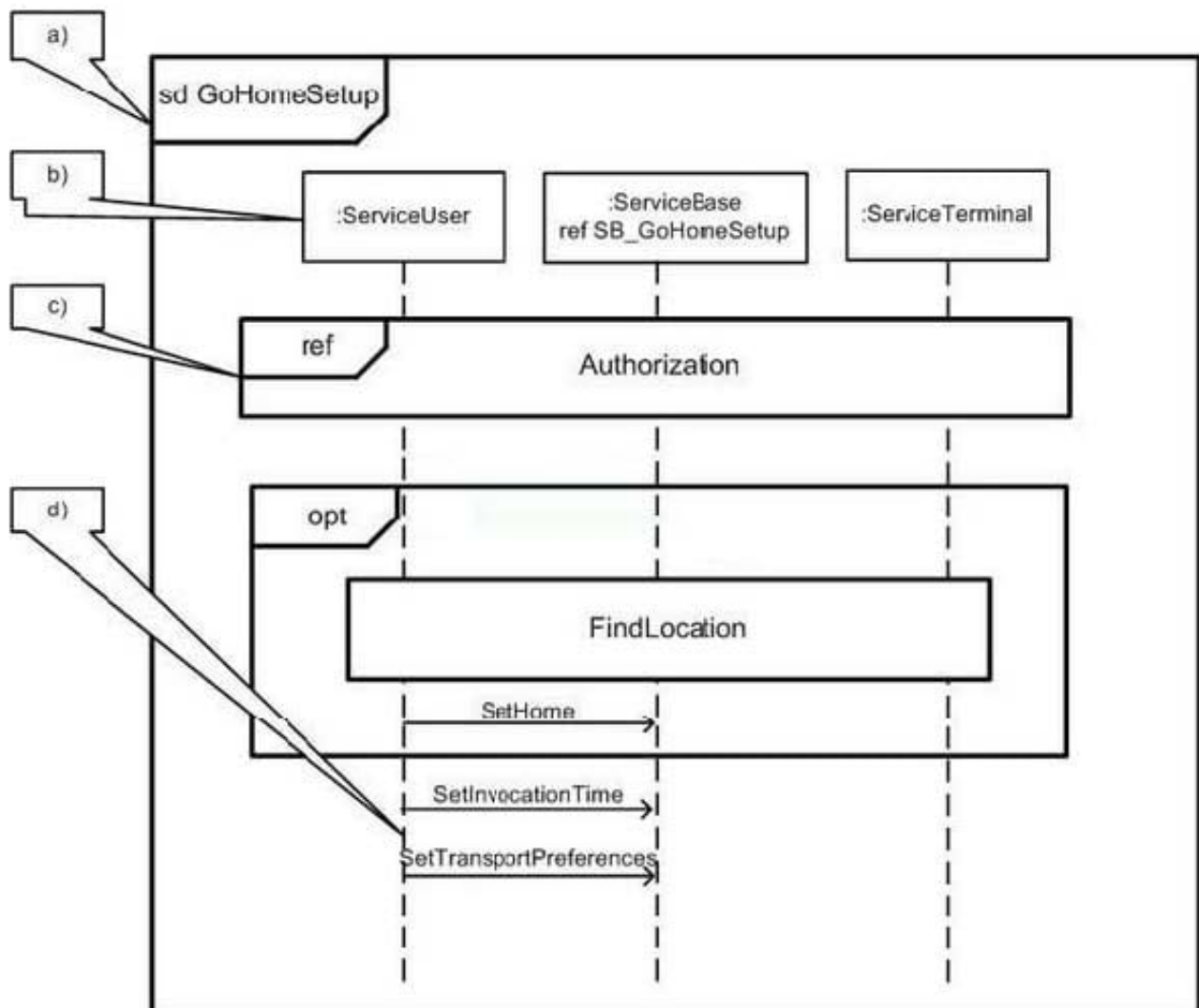


- A. port p is connected to an object called F.
- B. Port p realizes the features defined by interface F.
- C. Port p requires the features defined by interface F.
- D. Class C has internal structure.
- E. Object c1 is a kind of component.

Correct Answer: C

QUESTION 4

In the exhibit, what represents an interaction occurrence?



A. A

B. B

C. C

D. D

Correct Answer: C

QUESTION 5

What is true of a completion transition?

A. is executed when the state machine is terminated

B. is only triggered by a completion event

C. has no trigger defined



D. is executed when the final state is reached

Correct Answer: B

[OMG-OCUP2-INT200 VCE
Dumps](#)

[OMG-OCUP2-INT200 Exam
Questions](#)

[OMG-OCUP2-INT200
Braindumps](#)