



OG0-023^{Q&As}

ArchiMate 2 Combined Part 1 and 2 Examination

Pass The Open Group OG0-023 Exam with 100% Guarantee

Free Download Real Questions & Answers **PDF** and **VCE** file from:

<https://www.passapply.com/og0-023.html>

100% Passing Guarantee
100% Money Back Assurance

Following Questions and Answers are all new published by The Open Group Official Exam Center

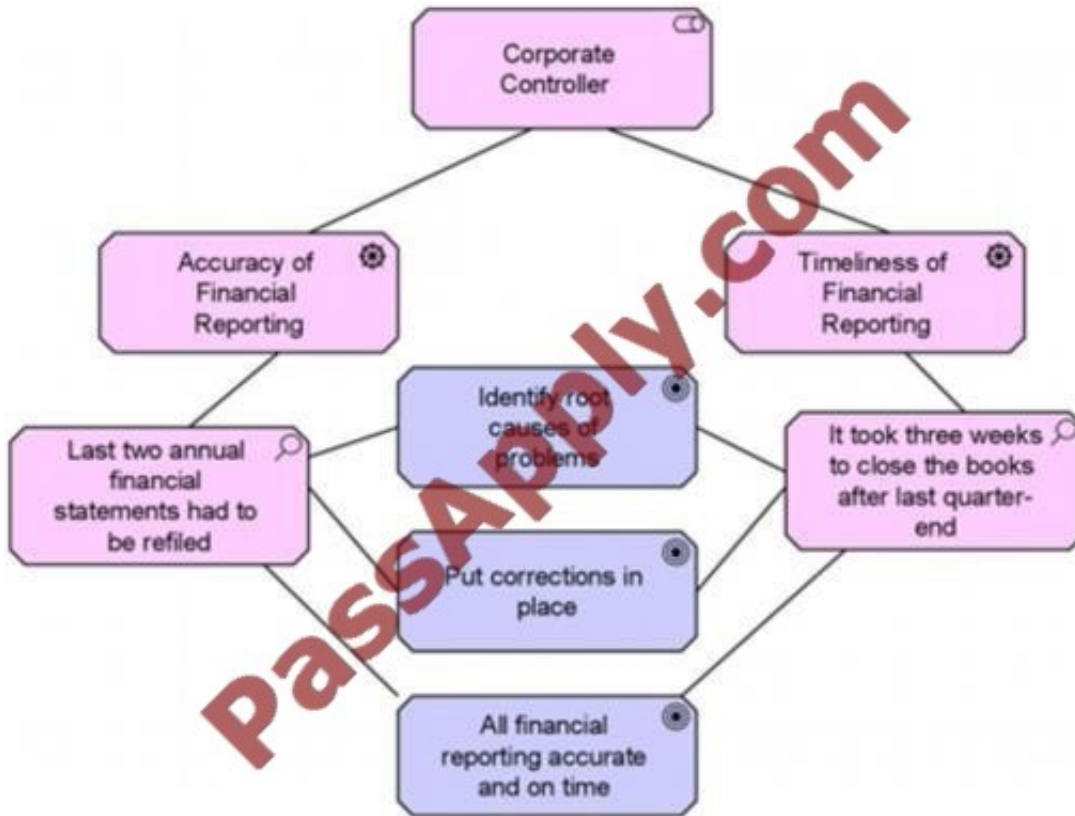
-  **Instant Download** After Purchase
-  **100% Money Back** Guarantee
-  **365 Days** Free Update
-  **800,000+** Satisfied Customers





QUESTION 1

Consider the following example view:



Which of the following best describes how this view could be used?

- A. To help infrastructure engineers design necessary increases in server capacity to improve the financial reporting
- B. To assign software developers to the work packages needed to address problems with the financial reporting
- C. To familiarize managers and enterprise architects with the motivations of the Corporate Controller
- D. To put in place changes to business processes to address requirements of the Corporate Controller

Correct Answer: C

QUESTION 2

Scenario

Please read this scenario prior to answering the question ArchiSurance senior management; board members, customers and major stockholders have long been concerned about disaster resiliency in light of the company's heavy reliance on

a single data center. The data center is located in an area that is prone to flooding and earthquakes, according to expert assessments done by consultants retained for this purpose. In addition, the data center is located under a busy



cafeteria,

and water occasionally leaks through its ceiling.

To address these problems, ArchiSurance has developed a plan to move from its current data center to a pair of ready-to-use data centers in separate cities. The data center move is designed to reduce the risk of business interruption,

reduce both planned and unplanned downtime for critical applications, and reassure ArchiSurance stakeholders. However, a number of limitations make the planned transition to the new data centers particularly challenging. A number of

critical ArchiSurance applications cannot be offline for more than an hour, and any downtime for these application must only occur in certain four-hour windows each weekend. Also, the move cannot occur during quarterly or year-end closing

periods in order to avoid interrupting critical processing. Fulfillment of these specific type of requirements will reduce the risk of business interruption from the data center move activities themselves.

ArchiSurance management has therefore planned a multi-phase data center transformation program. All of the activities in each phase are necessary to ensure a progression of stable and fully functional data center configurations. The first

phase consists of detailed scheduling and planning to produce a comprehensive transformation plan that meets ArchiSurance timing and scheduling requirements. During the second phase, ArchiSurance is to contract for the hardware and

software required for the new datacenters, as well for refunds for the hardware and software to be returned from the current data center once it is shut down. During the third phase, the new data centers are to be set up, and the new

hardware and software are to be tested in parallel with what is already in production. The actual transition between the old and new data centers occurs in the fourth phase, and the fifth phase involves shutting down and dismantling the old

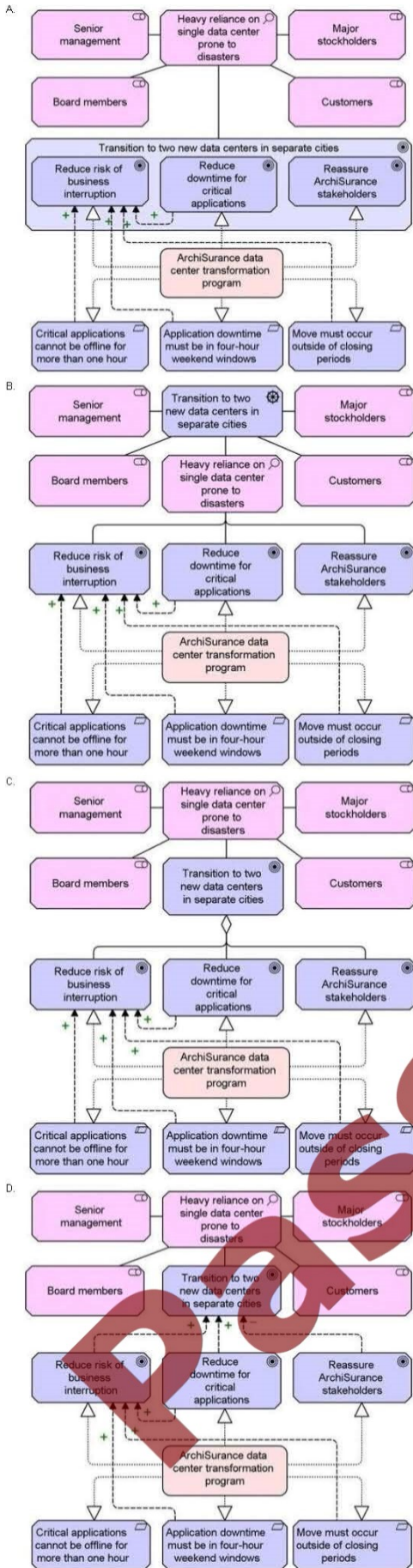
data center, and returning its hardware and software for contracted refunds. Phases two through five are each to be initiated when specific conditions are met in the previous phase.

Refer to the Scenario

The head of IT has asked you to help her explain why ArchiSurance decided to transform its data center infrastructure. You must model the stakeholders, the motivations, and the influencing relationships between these motivations. You must

also model the specific goals realized by the data center transformation program and the limitations within which this program must operate.

Which answer provides the best explanation?





A. B. C. D.

Correct Answer: A

QUESTION 3

Which of the following best defines "architecture" in the context of the ArchiMate standard?

- A. A high-level summary of a system that is accessible to non-technical executives and other stakeholders
- B. A formal description of a system, or a detailed plan of the system at component level to guide its implementation
- C. A description of each component of a system in sufficient detail to ensure that the component is designed and built correctly in every respect
- D. An enumeration of the key concepts and philosophies that motivate and shape a major system

Correct Answer: B

QUESTION 4

Consider the following symbol:



Which of the following best describes what this symbol represents?

- A. A modular, deployable, and replaceable part of a software system that encapsulates its behavior and data and exposes these through a set of interfaces
- B. A perceptible form of the information carried by a business object
- C. A physical piece of data used or produced in software development, or by system deployment and operation
- D. A software environment for specific types of components and objects that are deployed on it

Correct Answer: C

**QUESTION 5**

Consider the following symbol that represents information about a major systems and process transformation project:



What concept does this symbol represent?

- A. A constraint
- B. A principle
- C. A goal
- D. A requirement

Correct Answer: B

[OG0-023 PDF Dumps](#)

[OG0-023 VCE Dumps](#)

[OG0-023 Exam Questions](#)



To Read the [Whole Q&As](#), please purchase the [Complete Version](#) from [Our website](#).

Try our product !

100% Guaranteed Success
100% Money Back Guarantee
365 Days Free Update
Instant Download After Purchase
24x7 Customer Support
Average 99.9% Success Rate
More than 800,000 Satisfied Customers Worldwide
Multi-Platform capabilities - [Windows](#), [Mac](#), [Android](#), [iPhone](#), [iPod](#), [iPad](#), [Kindle](#)

We provide exam PDF and VCE of Cisco, Microsoft, IBM, CompTIA, Oracle and other IT Certifications.
You can view Vendor list of All Certification Exams offered:

<https://www.passapply.com/allproducts>

Need Help

Please provide as much detail as possible so we can best assist you.
To update a previously submitted ticket:



 <p>One Year Free Update Free update is available within One Year after your purchase. After One Year, you will get 50% discounts for updating. And we are proud to boast a 24/7 efficient Customer Support system via Email.</p>	 <p>Money Back Guarantee To ensure that you are spending on quality products, we provide 100% money back guarantee for 30 days from the date of purchase.</p>	 <p>Security & Privacy We respect customer privacy. We use McAfee's security service to provide you with utmost security for your personal information & peace of mind.</p>
---	---	--

Any charges made through this site will appear as Global Simulators Limited.
All trademarks are the property of their respective owners.
Copyright © passapply, All Rights Reserved.