



NSE8_810^{Q&As}

Fortinet Network Security Expert 8 Written Exam (810)

Pass Fortinet NSE8_810 Exam with 100% Guarantee

Free Download Real Questions & Answers **PDF** and **VCE** file from:

https://www.passapply.com/nse8_810.html

100% Passing Guarantee
100% Money Back Assurance

Following Questions and Answers are all new published by Fortinet
Official Exam Center

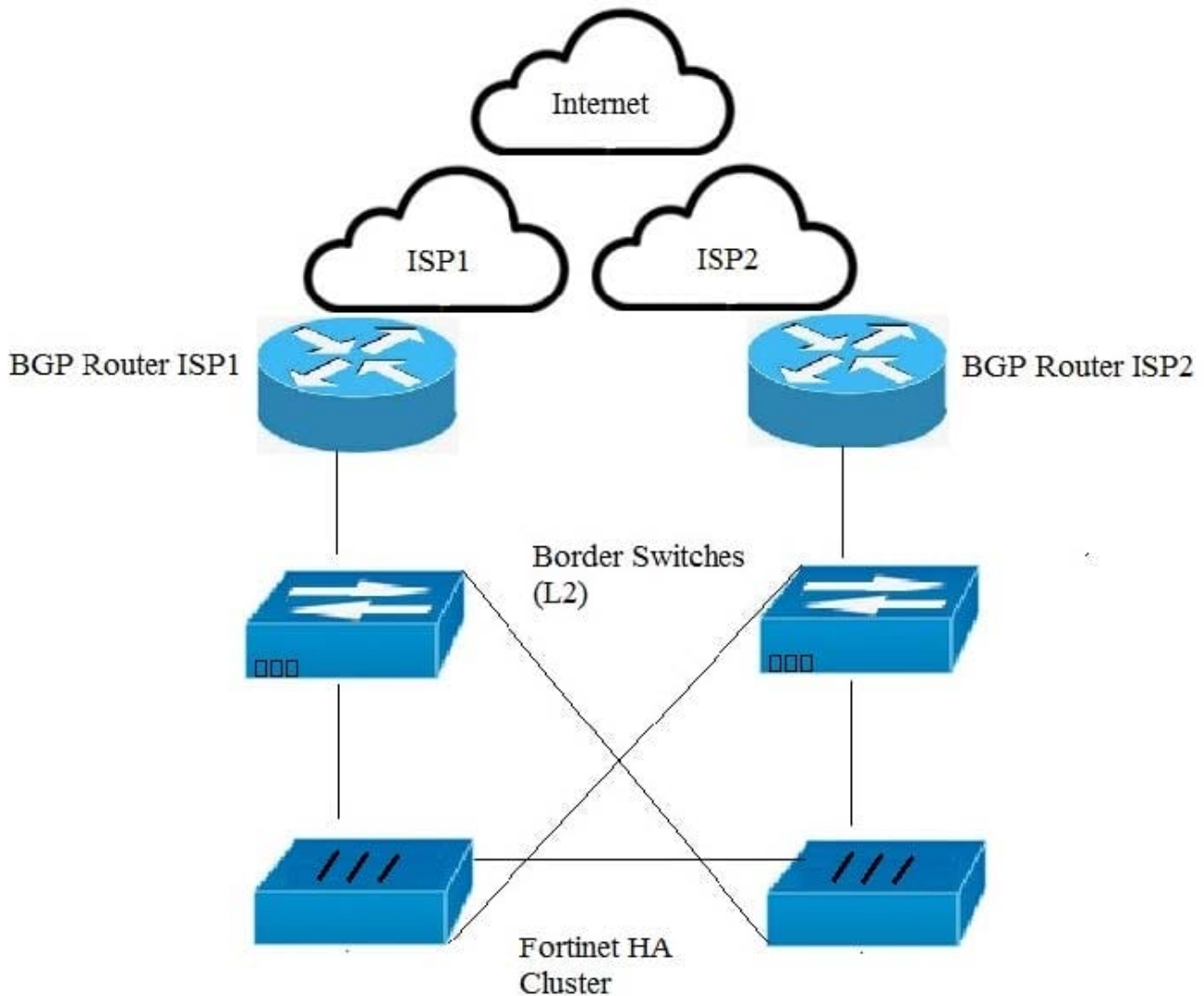
-  **Instant Download** After Purchase
-  **100% Money Back** Guarantee
-  **365 Days** Free Update
-  **800,000+** Satisfied Customers





QUESTION 1

Exhibit Your organization has a FortiGate cluster that is connected to two independent ISPs. You must configure the FortiGate failover for a single ISP failure to occur without disruption.



Referring to the exhibit, which two FortiGate BGP features would be used to accomplish this task? (Choose two.)

- A. Enable BFD
- B. Enable EBGP multipath
- C. Enable graceful restart
- D. Enable synchronization

Correct Answer: AC



QUESTION 2

You deploy a FortiGate device in a remote office based on the requirements shown below.

- Due to company's security policy, management IP of your FortiGate is not allowed to access the Internet.
- Apply Web Filtering, Antivirus, IPS and Application control to the protected subnet. -- Be managed by a central FortiManager in the head office.

Which action will help to achieve the requirements?

- A. Configure a default route and make sure that the FortiGate device can ping to service fortiguard net.
- B. Configure the FortiGuard override server and use the IP address of the FortiManager
- C. Configure the FortiGuard override server and use the IP address of service, fortiguard net.
- D. Configure FortiGate to use FortiGuard Filtering Port 8888.

Correct Answer: B

QUESTION 3

Exhibit Click the Exhibit button. The exhibit shows the steps for creating a URL rewrite policy on a FortiWeb. Which statement represents the purpose of this policy?



Exhibit



```
config waf url-rewrite-rule
edit "NSE8-rule"
set action redirect
set location "https://$0/$1"
set host-status disable
set host-use-pserver disable
set referer-status disable
set referer-use-pserver disable
set url-status disable
config match-condition
edit 1
set reg-exp "(.*)"
set protocol-filter enable
next
edit 2
set object http-url
set reg-exp "^/(.*)$"
next
end
next
end

config waf url-rewrite url-rewrite-policy
edit "nse8-rewrite"
config rule
edit 1
set url-rewrite-rule-name "NSE8-rule"
next
end
next
end
```

- A. The policy redirects all HTTP URLs to HTTPS.
- B. The policy redirects all HTTPS URLs to HTTP.
- C. The policy redirects only HTTPS URLs containing the `^(.*)$` string to HTTP.
- D. The policy redirects only HTTP URLs containing the `^(.*)$` string to HTTPS.

Correct Answer: A



QUESTION 4

An organization has one central site And three remote sites. A FortiSIEM has been drafted on the central site and now all devices across the remote sites need to be monitored by the FortiSIEM.

When action would reduce the WAN usage by the monitoring system?

- A. Deploy a single Supervisor on the central site and enable WAN optimize on the WAN gateways.
- B. Install local Collection remote site.
- C. Disable monitoring on the remote sites during the day.
- D. install a Supervisor and a Collector for each remote site.

Correct Answer: B

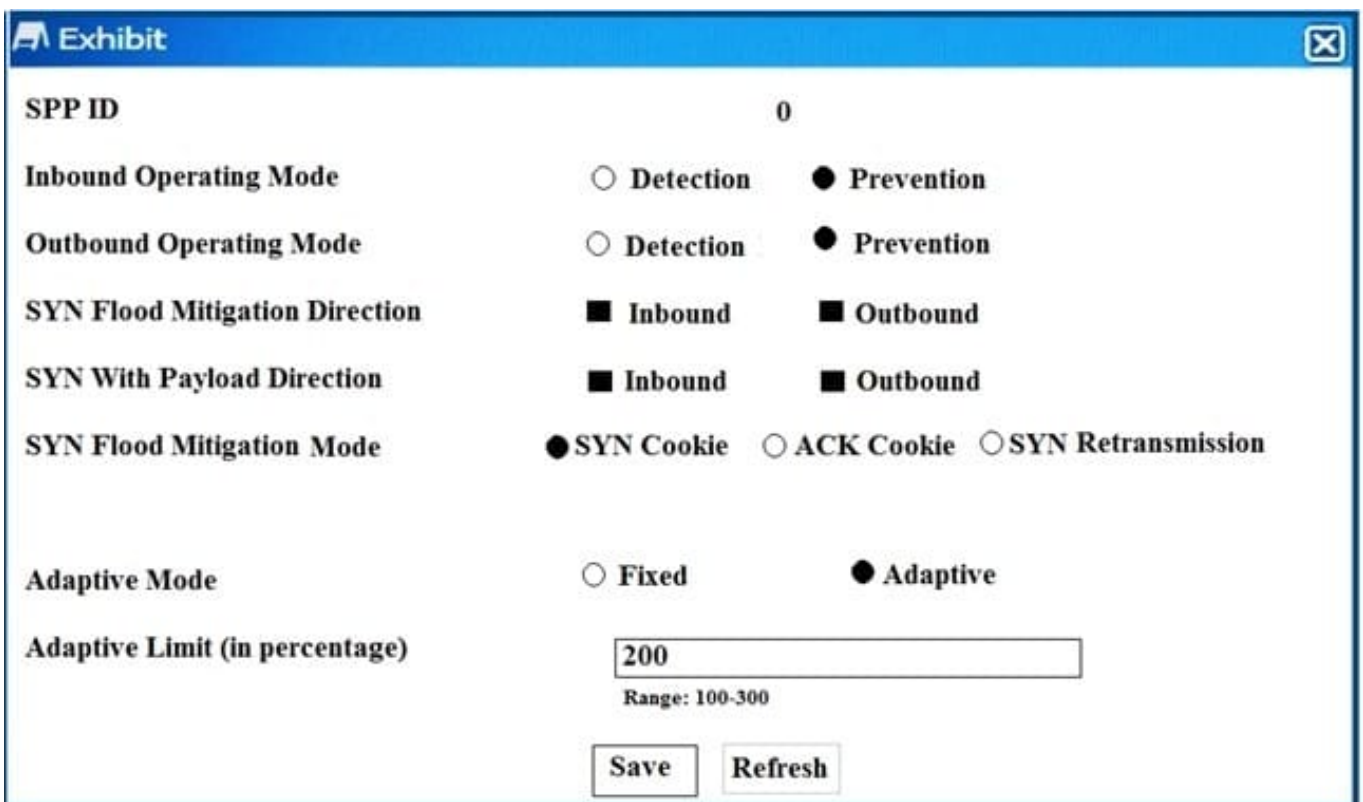
QUESTION 5

Exhibit

Click the Exhibit button.

The exhibit shows the configuration of a service protection profile (SPP) in a FortiDDoS device.

Which two statements are true about the traffic matching being inspected by this SPP? (Choose two.)



The screenshot shows the configuration for a Service Protection Profile (SPP) with ID 0. The configuration includes:

- SPP ID:** 0
- Inbound Operating Mode:** Detection, Prevention
- Outbound Operating Mode:** Detection, Prevention
- SYN Flood Mitigation Direction:** Inbound, Outbound
- SYN With Payload Direction:** Inbound, Outbound
- SYN Flood Mitigation Mode:** SYN Cookie, ACK Cookie, SYN Retransmission
- Adaptive Mode:** Fixed, Adaptive
- Adaptive Limit (in percentage):** 200 (Range: 100-300)

Buttons: Save, Refresh



- A. Traffic that does match any spp policy will not be inspection by this spp.
- B. FortiDDos will not send a SYNACK if a SYN packet is coming from an IP address that is not the legitimate IP (LIP) address table.
- C. FortiDooS will start dropping packets as soon as the traffic executed the configured maintain threshold.
- D. SYN packets with payloads will be drooped.

Correct Answer: AB

[NSE8_810 VCE Dumps](#)

[NSE8_810 Exam Questions](#)

[NSE8_810 Braindumps](#)