



NSE4_FGT-6.4^{Q&As}

Fortinet NSE 4 - FortiOS 6.4

Pass Fortinet NSE4_FGT-6.4 Exam with 100% Guarantee

Free Download Real Questions & Answers **PDF** and **VCE** file from:

https://www.passapply.com/nse4_fgt-6-4.html

100% Passing Guarantee
100% Money Back Assurance

Following Questions and Answers are all new published by Fortinet
Official Exam Center

- ⚙️ **Instant Download** After Purchase
- ⚙️ **100% Money Back** Guarantee
- ⚙️ **365 Days** Free Update
- ⚙️ **800,000+** Satisfied Customers





QUESTION 1

An administrator wants to configure Dead Peer Detection (DPD) on IPSEC VPN for detecting dead tunnels. The requirement is that FortiGate sends DPD probes only when no traffic is observed in the tunnel.

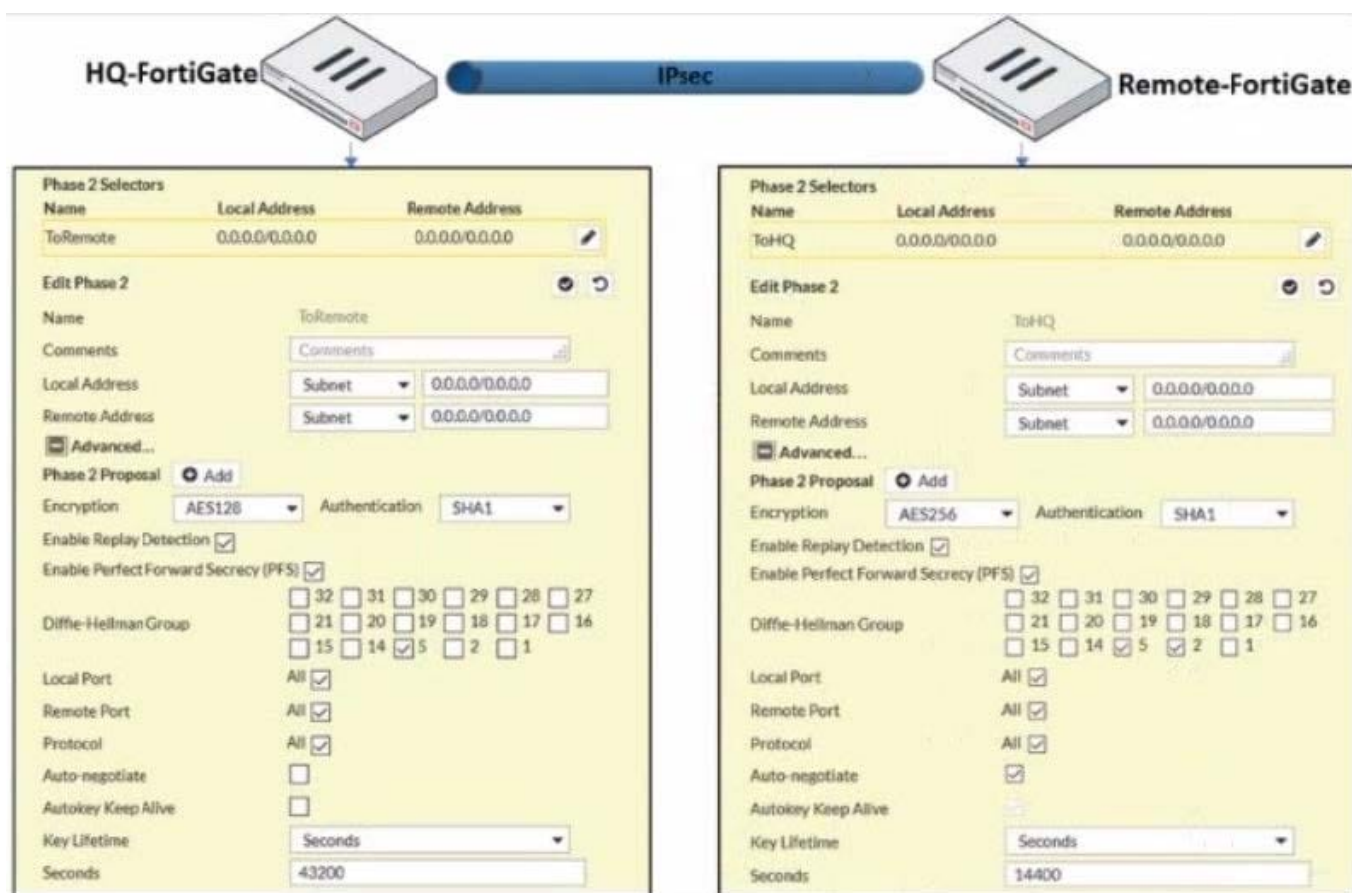
Which DPD mode on FortiGate will meet the above requirement?

- A. Disabled
- B. On Demand
- C. Enabled
- D. On Idle

Correct Answer: D

QUESTION 2

Refer to the exhibit.



A network administrator is troubleshooting an IPsec tunnel between two FortiGate devices. The administrator has determined that phase 1 status is up, but phase 2 fails to come up.



Based on the phase 2 configuration shown in the exhibit, what configuration change will bring phase 2 up?

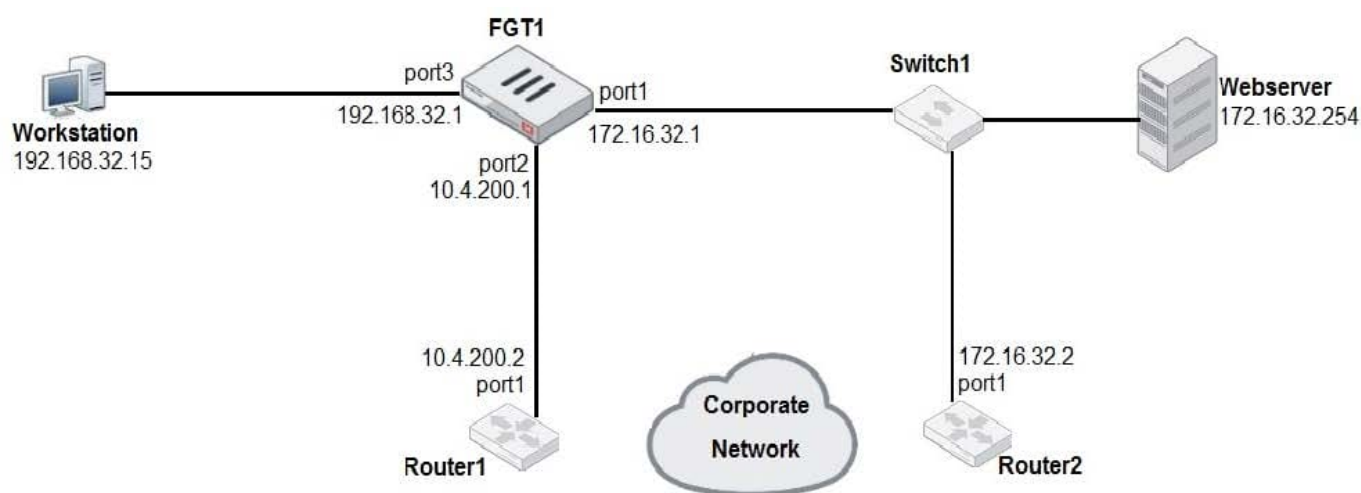
- A. On HQ-FortiGate, enable Auto-negotiate.
- B. On Remote-FortiGate, set Seconds to 43200.
- C. On HQ-FortiGate, enable Diffie-Hellman Group 2.
- D. On HQ-FortiGate, set Encryption to AES256.

Correct Answer: D

Reference: <https://docs.fortinet.com/document/fortigate/5.4.0/cookbook/168495>

QUESTION 3

Examine the network diagram shown in the exhibit, then answer the following question:



Which one of the following routes is the best candidate route for FGT1 to route traffic from the Workstation to the Web server?

- A. 172.16.0.0/16 [50/0] via 10.4.200.2, port2 [5/0]
- B. 0.0.0.0/0 [20/0] via 10.4.200.2, port2
- C. 10.4.200.0/30 is directly connected, port2
- D. 172.16.32.0/24 is directly connected, port1

Correct Answer: D

QUESTION 4

Which scanning technique on FortiGate can be enabled only on the CLI?



- A. Heuristics scan
- B. Trojan scan
- C. Antivirus scan
- D. Ransomware scan

Correct Answer: A

Reference: <https://docs.fortinet.com/document/fortigate/6.0.0/handbook/567568/enabling-scanning>

QUESTION 5

Refer to the exhibit.



The diagram illustrates a site-to-site VPN configuration between two FortiGate devices. HQ-FortiGate is on the left, and Remote-FortiGate is on the right. They are connected via the Internet. HQ-FortiGate port1 (10.10.100.10) is connected to Remote-FortiGate port2 (10.10.200.10).

HQ-FortiGate Configuration:

- Network:**
 - IP Version: IPv4
 - Remote Gateway: Static IP Address
 - IP Address: 10.10.200.10
 - Interface: port1
 - Local Gateway: ☐
 - Mode Config: ☐
 - NAT Traversal: Enable
 - Keepalive Frequency: 10
 - Dead Peer Detection: Disable
 - Forward Error Correction: Egress ☐ Ingress ☐
- Authentication:**
 - Method: Pre-shared Key
 - Pre-shared Key: [Redacted]
- IKE:**
 - Version: 1
 - Mode: Aggressive
- Peer Options:**
 - Accept Types: Any peer ID
- Phase 1 Proposal:**
 - Encryption: AES128
 - Authentication: SHA1
 - Encryption: AES256
 - Authentication: SHA256
 - Diffie-Hellman Group: 5
 - Key Lifetime (seconds): 86400
 - Local ID: [Redacted]

Remote-FortiGate Configuration:

- Network:**
 - IP Version: IPv4
 - Remote Gateway: Static IP Address
 - IP Address: 10.10.100.10
 - Interface: port1
 - Local Gateway: ☐
 - Mode Config: ☐
 - NAT Traversal: Enable
 - Keepalive Frequency: 10
 - Dead Peer Detection: On Demand
 - Forward Error Correction: Egress ☐ Ingress ☐
- Authentication:**
 - Method: Pre-shared Key
 - Pre-shared Key: [Redacted]
- IKE:**
 - Version: 1
 - Mode: Main (ID protection)
- Phase 1 Proposal:**
 - Encryption: AES256
 - Authentication: SHA256
 - Diffie-Hellman Group: 2
 - Key Lifetime (seconds): 86400
 - Local ID: [Redacted]



A network administrator is troubleshooting an IPsec tunnel between two FortiGate devices. The administrator has determined that phase 1 fails to come up. The administrator has also re-entered the preshared key on both FortiGate devices to make sure they match.

Based on the phase 1 configuration and the diagram shown in the exhibit, which two configuration changes will bring phase 1 up? (Choose two.)

- A. On HQ-FortiGate, set IKE mode to Main (ID protection).
- B. On both FortiGate devices, set Dead Peer Detection to On Demand.
- C. On HQ-FortiGate, disable Diffie-Helman group 2.
- D. On Remote-FortiGate, set port2 as Interface.

Correct Answer: AD

[NSE4_FGT-6.4 PDF Dumps](#) [NSE4_FGT-6.4 Study Guide](#)

[NSE4_FGT-6.4 Exam Questions](#)