



# NSE4\_FGT-6.4<sup>Q&As</sup>

Fortinet NSE 4 - FortiOS 6.4

## Pass Fortinet NSE4\_FGT-6.4 Exam with 100% Guarantee

Free Download Real Questions & Answers **PDF** and **VCE** file from:

[https://www.passapply.com/nse4\\_fgt-6-4.html](https://www.passapply.com/nse4_fgt-6-4.html)

100% Passing Guarantee  
100% Money Back Assurance

Following Questions and Answers are all new published by Fortinet Official Exam Center

-  **Instant Download** After Purchase
-  **100% Money Back** Guarantee
-  **365 Days** Free Update
-  **800,000+** Satisfied Customers





### QUESTION 1

How do you format the FortiGate flash disk?

- A. Load a debug FortiOS image.
- B. Load the hardware test (HQIP) image.
- C. Execute the CLI command execute formatlogdisk.
- D. Select the format boot device option from the BIOS menu.

Correct Answer: D

### QUESTION 2

Refer to the exhibit.

The screenshot shows the 'Outgoing Interfaces' configuration page in FortiGate. It features four radio button options: 'Manual' (unselected), 'Best Quality' (selected), 'Lowest Cost (SLA)' (unselected), and 'Maximize Bandwidth (SLA)' (unselected). Below these is an 'Interface preference' list with 'port1', 'port2', 'port3', and 'port4' all selected. The 'Measured SLA' dropdown is set to 'SLA\_1' and the 'Quality criteria' dropdown is set to 'Latency'. At the bottom, the 'Status' is set to 'Enable'.

```
NGFW-1 # diagnose sys virtual-wan-link health-check
Health Check(DC_PBX_SLA):
Seq(1 port1): state(alive), packet-loss(0.000%) latency(21.566), jitter(2.685) sla_map=0x
Seq(2 port2): state(alive), packet-loss(0.000%) latency(54.349), jitter(4.287) sla_map=0x
Seq(3 port3): state(alive), packet-loss(0.100%) latency(32.683), jitter(5.685) sla_map=0x
Seq(4 port4): state(alive), packet-loss(2.010%) latency(48.881), jitter(4.287) sla_map=0x
```

The exhibit contains the configuration for an SD-WAN Performance SLA, as well as the output of diagnose sys virtual-wan-link health-check.



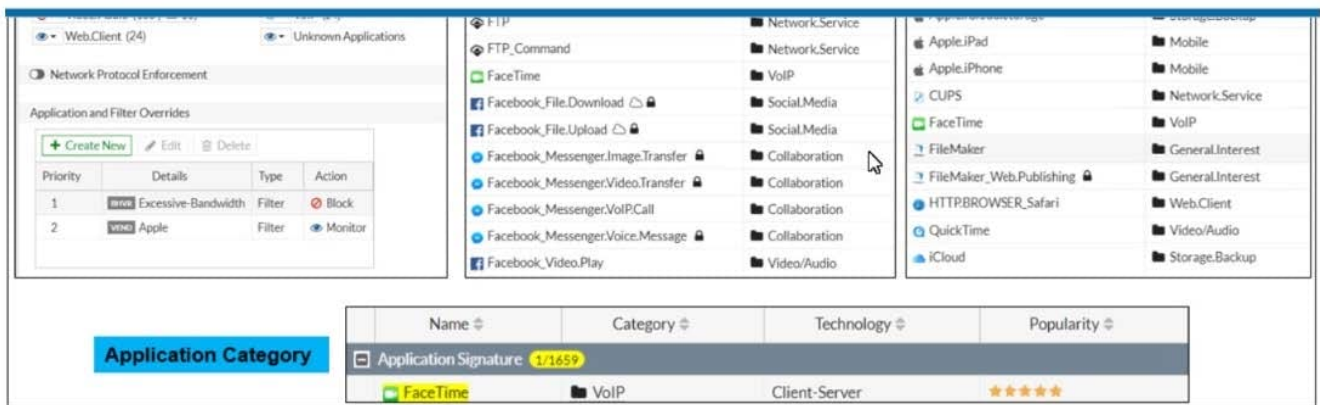
Which interface will be selected as an outgoing interface?

- A. port2
- B. port4
- C. port3
- D. port1

Correct Answer: D

### QUESTION 3

Refer to the exhibit to view the application control profile.



Based on the configuration, what will happen to Apple FaceTime?

- A. Apple FaceTime will be blocked, based on the Excessive-Bandwidth filter configuration
- B. Apple FaceTime will be allowed, based on the Apple filter configuration.
- C. Apple FaceTime will be allowed only if the filter in Application and Filter Overrides is set to Learn
- D. Apple FaceTime will be allowed, based on the Categories configuration.

Correct Answer: A

### QUESTION 4

Which of statement is true about SSL VPN web mode?

- A. The tunnel is up while the client is connected.
- B. It supports a limited number of protocols.
- C. The external network application sends data through the VPN.
- D. It assigns a virtual IP address to the client.



Correct Answer: B

FortiGate\_Security\_6.4 page 575-Web mode requires only a web browser, but supports a limited number of protocols.

---

#### QUESTION 5

Which two VDOMs are the default VDOMs created when FortiGate is set up in split VDOM mode? (Choose two.)

- A. FG-traffic
- B. Mgmt
- C. FG-Mgmt
- D. Root

Correct Answer: AD

Reference: <https://docs.fortinet.com/document/fortigate/6.2.0/cookbook/758820/split-task-vdom-mode>

[NSE4\\_FGT-6.4 VCE Dumps](#) [NSE4\\_FGT-6.4 Study Guide](#) [NSE4\\_FGT-6.4 Braindumps](#)