



NSE4_FGT-6.2^{Q&As}

Fortinet NSE 4 - FortiOS 6.2

Pass Fortinet NSE4_FGT-6.2 Exam with 100% Guarantee

Free Download Real Questions & Answers **PDF** and **VCE** file from:

https://www.passapply.com/nse4_fgt-6-2.html

100% Passing Guarantee
100% Money Back Assurance

Following Questions and Answers are all new published by Fortinet Official Exam Center

-  **Instant Download** After Purchase
-  **100% Money Back** Guarantee
-  **365 Days** Free Update
-  **800,000+** Satisfied Customers





QUESTION 1

Which of the following statements about the FSSO collector agent timers is true?

- A. The workstation verify interval is used to periodically check if a workstation is still a domain member.
- B. The IP address change verify interval monitors the server IP address where the collector agent is installed, and the updates the collector agent configuration if it changes.
- C. The user group cache expiry is used to age out the monitored groups.
- D. The dead entry timeout interval is used to age out entries with an unverified status.

Correct Answer: D

QUESTION 2

Refer to the following exhibit.



Edit AntiVirus Profile

Name

Comments 29/255

Detect Viruses Block Monitor

Inspected Protocols

HTTP

SMTP

POP3

IMAP

MAPI

FTP

APT Protection Options

Content Disarm and Reconstruction

Treat Windows Executables in Email Attachments as Viruses

Use Virus Outbreak Prevention Database ⓘ



Name

Comments 21/255

Log Oversized Files

RPC over HTTP

Protocol Port Mapping

HTTP	<input checked="" type="checkbox"/>	Any	Specify	<input type="text" value="80"/>
SMTP	<input checked="" type="checkbox"/>	Any	Specify	<input type="text" value="25"/>
POP3	<input checked="" type="checkbox"/>	Any	Specify	<input type="text" value="110"/>
IMAP	<input checked="" type="checkbox"/>	Any	Specify	<input type="text" value="143"/>
FTP	<input checked="" type="checkbox"/>	Any	Specify	<input type="text" value="21"/>
NNTP	<input checked="" type="checkbox"/>	Any	Specify	<input type="text" value="119"/>
MAPI	<input checked="" type="checkbox"/>			<input type="text" value="135"/>
DNS	<input checked="" type="checkbox"/>			<input type="text" value="53"/>

Common Options

Comfort Clients

Block Oversized File/Email

Web Options

Chunked Bypass

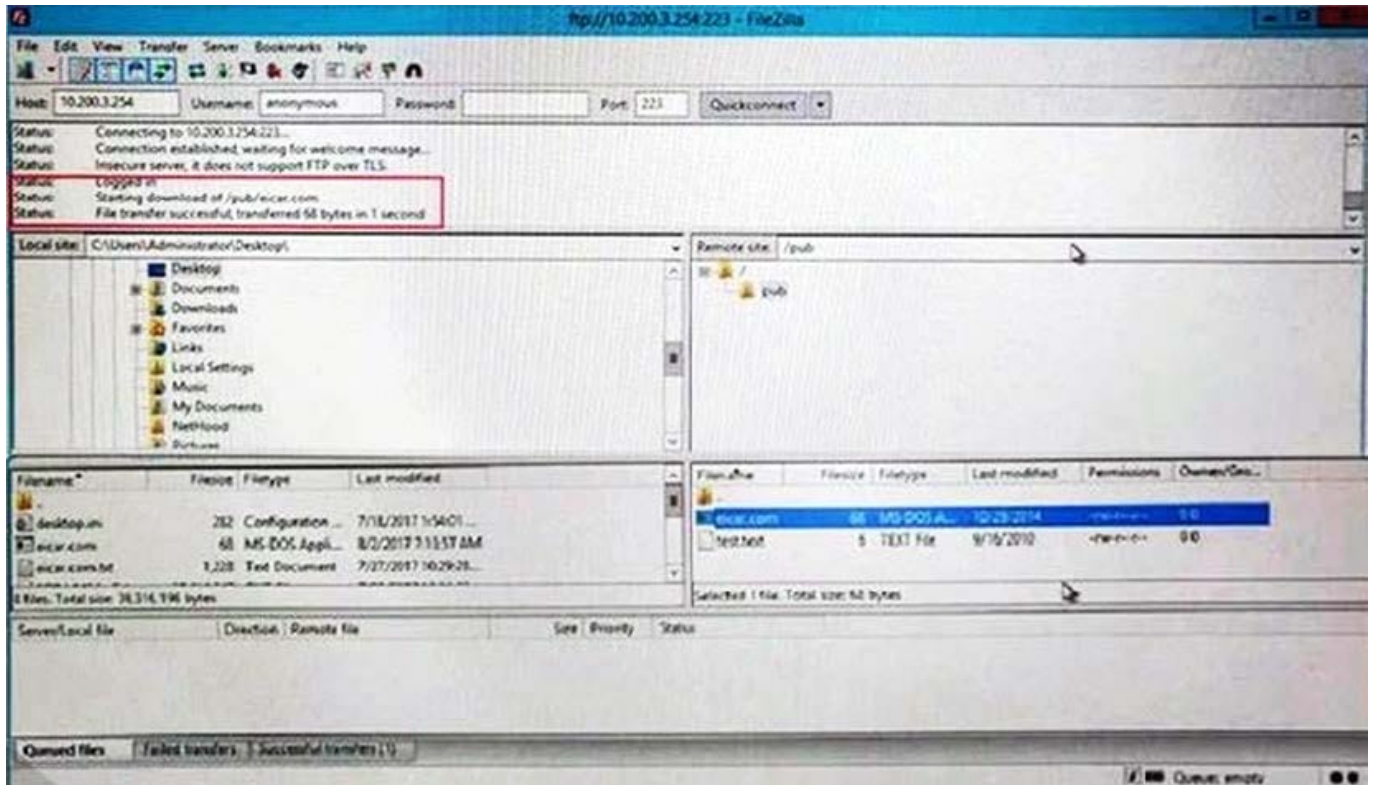
Add Fortinet Bar

HTTP Policy Redirect

Email Options

Allow Fragmented Messages

Append Signature (SMTP)



Why is FortiGate not blocking the test file over FTP download?

- A. Deep-inspection must be enabled for FortiGate to fully scan FTP traffic.
- B. FortiGate needs to be operating in flow-based inspection mode in order to scan FTP traffic.
- C. The FortiSandbox signature database is required to successfully scan FTP traffic.
- D. The proxy options profile needs to scan FTP traffic on a non-standard port.

Correct Answer: D

QUESTION 3

Which statement is true regarding the policy ID number of a firewall policy?

- A. Defines the order in which rules are processed.
- B. Represents the number of objects used in the firewall policy.
- C. Required to modify a firewall policy using the CLI.
- D. Changes when firewall policies are reordered.

Correct Answer: C

QUESTION 4



What files are sent to FortiSandbox for inspection in flow-based inspection mode?

- A. All suspicious files that do not have their hash value in the FortiGuard antivirus signature database.
- B. All suspicious files that are above the defined oversize limit value in the protocol options.
- C. All suspicious files that match patterns defined in the antivirus profile.
- D. All suspicious files that are allowed to be submitted to FortiSandbox in the antivirus profile.

Correct Answer: C

QUESTION 5

Which statement about the policy ID number of a firewall policy is true?

- A. It is required to modify a firewall policy using the CLI.
- B. It represents the number of objects used in the firewall policy.
- C. It changes when firewall policies are reordered.
- D. It defines the order in which rules are processed.

Correct Answer: A

[NSE4_FGT-6.2 VCE Dumps](#)

[NSE4_FGT-6.2 Practice
Test](#)

[NSE4_FGT-6.2 Braindumps](#)