



MD-100^{Q&As}

Windows Client

Pass Microsoft MD-100 Exam with 100% Guarantee

Free Download Real Questions & Answers **PDF** and **VCE** file from:

<https://www.passapply.com/md-100.html>

100% Passing Guarantee
100% Money Back Assurance

Following Questions and Answers are all new published by Microsoft
Official Exam Center

-  **Instant Download** After Purchase
-  **100% Money Back** Guarantee
-  **365 Days** Free Update
-  **800,000+** Satisfied Customers





QUESTION 1

Your network contains an Active Directory domain. The domain contains 1,000 computers that run Windows 10.

You discover a known compatibility issue between a feature update and a device driver on the computers.

You need to test the installation of the feature update on a test computer.

Which Windows Update setting should you configure by using a Group Policy Object (GPO)?

- A. Automatic Updates detection frequency
- B. Disable safeguards for Feature Updates
- C. Select the target Feature Update version
- D. Reschedule Automatic Updates scheduled installations

Correct Answer: B

Reference: <https://docs.microsoft.com/en-us/windows/deployment/update/safeguard-opt-out>

QUESTION 2

HOTSPOT

You have 50 Windows 8.1 devices.

You plan to migrate the devices to Windows 10.

You need to install the following tools on a local computer:

Deployment Image Servicing and Management (DISM)

Windows System Image Manager (Windows SIM)

OEM Activation 3.0 (OA 3.0)

ScanState

LoadState

Which two features in the Windows Assessment and Deployment Kit should you select? To answer, select the nodes in the answer area. NOTE: Each correct selection is worth one point.

Hot Area:



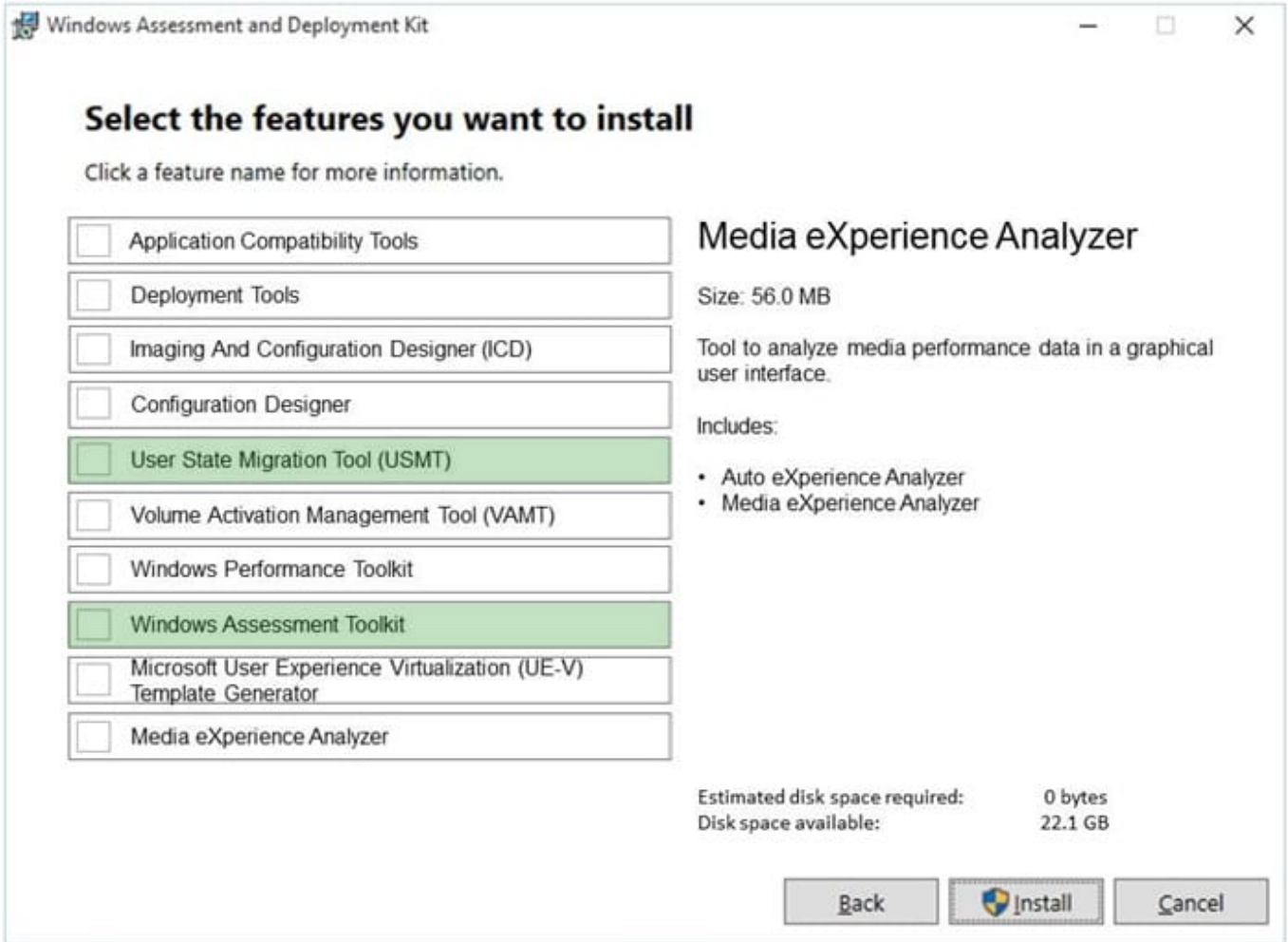
Windows Assessment and Deployment Kit

Select the features you want to install

Click a feature name for more information.

<input type="checkbox"/> Application Compatibility Tools	<h3>Media eXperience Analyzer</h3> <p>Size: 56.0 MB</p> <p>Tool to analyze media performance data in a graphical user interface.</p> <p>Includes:</p> <ul style="list-style-type: none">• Auto eXperience Analyzer• Media eXperience Analyzer <p>Estimated disk space required: 0 bytes Disk space available: 22.1 GB</p> <p><input type="button" value="Back"/> <input type="button" value="Install"/> <input type="button" value="Cancel"/></p>
<input type="checkbox"/> Deployment Tools	
<input type="checkbox"/> Imaging And Configuration Designer (ICD)	
<input type="checkbox"/> Configuration Designer	
<input type="checkbox"/> User State Migration Tool (USMT)	
<input type="checkbox"/> Volume Activation Management Tool (VAMT)	
<input type="checkbox"/> Windows Performance Toolkit	
<input type="checkbox"/> Windows Assessment Toolkit	
<input type="checkbox"/> Microsoft User Experience Virtualization (UE-V) Template Generator	
<input type="checkbox"/> Media eXperience Analyzer	

Correct Answer:



Box 1: User State Migration Tool (USMT)

ScanState

LoadState

The User State Migration Tool (USMT) is included with the Windows Assessment and Deployment Kit (Windows ADK) for Windows 10.

USMT includes three command-line tools:

ScanState.exe

LoadState.exe

UsmtUtils.exe

Box 2: Windows Assessment

Deployment Image Servicing and Management (DISM)

Windows System Image Manager (Windows SIM)

OEM Activation 3.0 (OA 3.0)



Windows Assessment and Deployment Kit (Windows ADK)

DISM is installed with Windows, and it is also distributed in the Windows Assessment and Deployment Kit (Windows ADK).

Windows SIM is included with the Windows ADK. Download the Windows ADK from this website.

Reference:

<https://learn.microsoft.com/en-us/windows/deployment/usmt/usmt-technical-reference>

<https://learn.microsoft.com/en-us/windows-hardware/get-started/adk-install>

QUESTION 3

You need to recommend a solution to configure the employee VPN connections. What should you include in the recommendation?

- A. Remote Access Management Console
- B. Group Policy Management Console (GPMC)
- C. Connection Manager Administration Kit (CMAK)
- D. Microsoft Intune

Correct Answer: D

References: https://docs.microsoft.com/en-us/windows-server/remote/remote-access/vpn/always-on-vpn/deploy/vpn-deploy-client-vpn-connections#bkmk_ProfileXML Testlet 2

QUESTION 4

Note: This question is part of a series of questions that present the same scenario. Each question in the series contains a unique solution that might meet the stated goals. Some question sets might have more than one correct solution, while

others might not have a correct solution.

After you answer a question in this section, you will NOT be able to return to it. As a result, these questions will not appear in the review screen.

A user named User1 has a computer named Computer1 that runs Windows 10. Computer1 is joined to an Azure Active Directory (Azure AD) tenant named contoso.com. User1 joins Computer1 to contoso.com by using user1@contoso.com.

Computer1 contains a folder named Folder1. Folder1 is in drive C and is shared as Share1. Share1 has the permission shown in the following table.



Group	Share permission
Everyone	Full control
AzureAD\user1@contoso.com	Owner

A user named User2 has a computer named Computer2 that runs Windows 10. User2 joins Computer2 to contoso.com by using user2@contoso.com.

User2 attempts to access Share1 and receives the following error message: "The username or password is incorrect."

You need to ensure that User2 can connect to Share1.

Solution: In Azure AD, you create a group named Group1 that contains User1 and User2.

You grant Group1 Change access to Share1.

Does this meet the goal?

- A. Yes
- B. No

Correct Answer: A

References: <https://docs.microsoft.com/en-us/azure/storage/files/storage-files-active-directory-enable#assign-access-permissions-to-an-identity>

QUESTION 5

You have a computer that runs Windows 11 and hosts the Hyper-V virtual machines shown in the following table.

Name	Generation	Configuration version
VM1	1	9.0
VM2	1	10.0
VM3	2	8.0
VM4	2	10.0

You need to install Windows 11 on a virtual machine.

On which virtual machine can you install Windows 11?

- A. VM2 only
- B. VM4 only
- C. VM2 and VM4 only
- D. VM2 and VM4 only
- E. VM1, VM2, VM3, and VM4



Correct Answer: E

Reference: <https://docs.microsoft.com/en-us/windows-server/virtualization/hyper-v/plan/should-i-create-a-generation-1-or-2-virtual-machine-in-hyper-v> <https://docs.microsoft.com/en-us/windows-server/virtualization/hyper-v/deploy/upgrade-virtual-machine-version-in-hyper-v-on-windows-or-windows-server>

[Latest MD-100 Dumps](#)

[MD-100 VCE Dumps](#)

[MD-100 Practice Test](#)