



JPR-934^{Q&As}

Security, Expert (JNCIE-SEC)

Pass Juniper JPR-934 Exam with 100% Guarantee

Free Download Real Questions & Answers **PDF** and **VCE** file from:

<https://www.passapply.com/jpr-934.html>

100% Passing Guarantee
100% Money Back Assurance

Following Questions and Answers are all new published by Juniper
Official Exam Center

- ⚙️ **Instant Download** After Purchase
- ⚙️ **100% Money Back** Guarantee
- ⚙️ **365 Days** Free Update
- ⚙️ **800,000+** Satisfied Customers





QUESTION 1

You are the backup administrator for your company. You are responsible for ensuring that all data on ten files servers are protected against data loss. Normal business hours from 8 A.M. to 5 P.M., Monday through Friday, are observed.

Network access is prohibited outside normal business hours.

A member server named File1 contains shared folder accessed by users in the sales department. The disk structure of File1 is shown in the following exhibit:

Volume	Hosts	Disk Size	Available Space
C	System and Boot Files	9 GB	2.54 GB
D	Shared Folders and User Profiles	25 GB	9.8 GB
F	Shared Folders	75 GB	53.35 GB

You have scheduled a daily backup of File1 as shown in the exhibit. (Click the Exhibit(s) button.) Users in the Sales department frequently leave documents open on their desktops when they leave work. These users occasionally request that

you restore a previous version of a file from backup. However, some of these files are not included in recent backup sets. You must modify the backup procedures for File1 so that all files, including open documents, will be included in the daily

backup. You also want to provide users with the ability to restore their files.

What should you do? (Choose all that apply. Each correct answer presents part of the solution.)

- A. Move all shared user data folders from drive D to drive F.
- B. Move all shared folders user data from drive F to drive D.
- C. Enable Shadow Copies of Shared Folders on drive F.
- D. Enable Volume shadow copy for the scheduled backup job.
- E. Select the Disable volume shadow copy option for the scheduled backup job.
- F. Install the Previous Versions Client software on all Sales department computers.
- G. Create a new daily backup job by using the same settings, but clear the Disable volume shadow copy option.

Correct Answer: ACFG

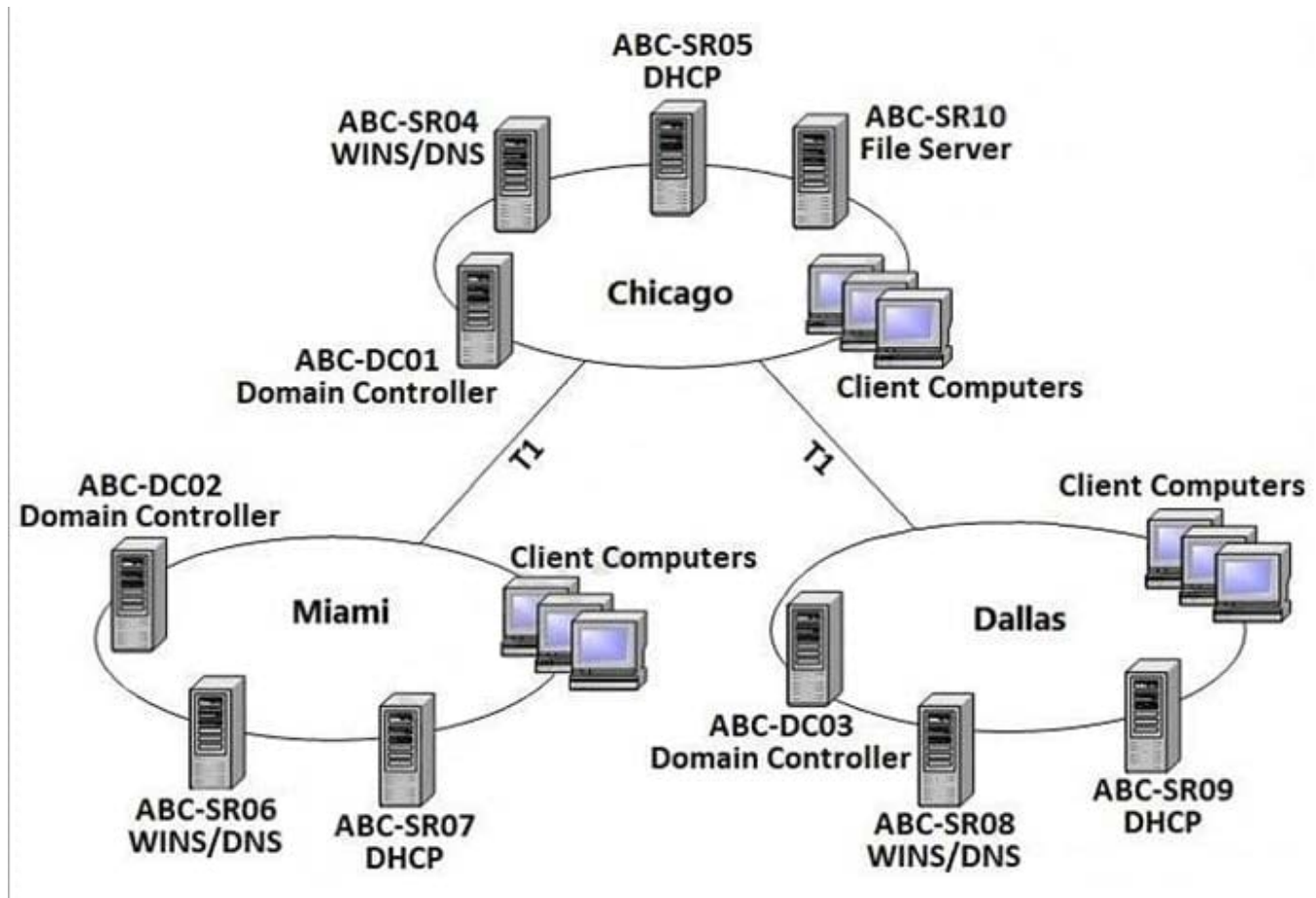
QUESTION 2

The ABC.com network consists of a single Active Directory domain named ABC.com. All servers on the ABC.com network run Windows Server.

ABC.com has its headquarters in Chicago and two branch offices in Dallas and Miami. The branch offices are



connected to the headquarters by means of T1 WAN links. The network at each office is configured as a separate Active Directory site as shown below.



ABC.com users in all three sites require access to a file server named ABC-SR10 that is located in the Chicago site.

Users in the Miami and Dallas offices are complaining about the unacceptable file server performance during peak working hours. You want to design a solution that provides fault tolerance for the file server and minimizes traffic over the WAN

links during office hours.

Which solution would you recommend?

- A. Implement a Distributed File System (DFS) with the DFS root in the Chicago office and DFS replicas in the Dallas and Miami offices. Configure replication to occur during off-peak hours.
- B. Install Windows Server file servers in the Dallas and Miami offices. Use the File Replication Service to replicate the folders during off-peak hours.
- C. Implement a two-node file server cluster in the Chicago office using Microsoft Cluster Services.
- D. Implement a two-node file server cluster in each office using Microsoft Cluster Services.

Correct Answer: A



QUESTION 3

You work as the network administrator at ABC.com. The ABC.com network has a domain named ABC.com. The servers at the ABC.com network run Windows Server. ABC.com has a subsidiary named Test Labs, Inc. that has a domain named testlabs.com.

The ABC.com network has a DNS server named ABC-SR05. ABC-SR05 acts as a secondary zone for testlabs.com

What actions must you take to track when the DNS server at Test Labs, Inc. sends notifications of modifications in the zone of testlabs.com to ABC-SR05?

- A. You must run the gpresult command in verbose mode.
- B. You must select debug logging and set the log to store Notification events on ABC- SR05.
- C. You must run the secedit command in analysis mode.
- D. You must configure a two-way initiated demand-dial connection.

Correct Answer: B

QUESTION 4

You work as a Network Administrator for ABC.com. The company has a Windows Active Directory-based single domain single forest network. The functional level of the forest is Windows Server. An intranet-based Web site is required to be installed on the network. Two servers are available for installing the application. You are required to accomplish the following tasks:

The Web site should be available all the time for the clients.

Both servers should be capable of fulfilling the clients\' requests at a time.

You take the following steps:

Create a two-node server cluster.

Configure one server as an active server and the other as a passive server.

Which of the required tasks will be accomplished by taking these steps?

- A. Both servers will be capable of fulfilling the clients\' requests at a time.
- B. None of the tasks will be accomplished.
- C. The Web site will be available all the time for the clients.
- D. Both tasks will be accomplished.

Correct Answer: C

QUESTION 5



The company consists of an Active Directory domain called ABC.com. All servers on the corporate network run Windows Server.

The network contains a server that runs Internet Authentication Service (IAS) called ABC-SR01. ABC-SR01 also runs the Routing and Remote Access service to provide VPN access to the network for external users. During routine monitoring

you discover that an external unauthorized user is trying to access the network through ABC-SR01.

How would you set up ABC-SR01 to log the IP addresses of the remote computers when they attempt to connect to the network using the VPN connection?

- A. Log the details of the access attempts by the VPN users by using IAS to configure the Authentication requests option enabled in the Remote Access Logging.
- B. Log the details of the access attempts by the VPN users by configuring the Routing and Remote Access service to log all IPsec connections.
- C. Log the details of the access attempts by the VPN users by enabling auditing of TCP/IP.sys.
- D. Log the details of the access attempts by the VPN users by enabling auditing of all Account Logon events on a domain controller.

Correct Answer: A

[Latest JPR-934 Dumps](#)

[JPR-934 VCE Dumps](#)

[JPR-934 Study Guide](#)