



# JPR-934<sup>Q&As</sup>

Security, Expert (JNCIE-SEC)

## Pass Juniper JPR-934 Exam with 100% Guarantee

Free Download Real Questions & Answers **PDF** and **VCE** file from:

<https://www.passapply.com/jpr-934.html>

100% Passing Guarantee  
100% Money Back Assurance

Following Questions and Answers are all new published by Juniper  
Official Exam Center

- ⚙ **Instant Download** After Purchase
- ⚙ **100% Money Back** Guarantee
- ⚙ **365 Days** Free Update
- ⚙ **800,000+** Satisfied Customers





### QUESTION 1

You work as a Network Administrator for ABC.com. The company has a Windows Active Directory-based single domain single forest network. The functional level of the forest is Windows Server. An intranet-based Web site is required to be installed on the network. Two servers are available for installing the application. You are required to accomplish the following tasks:

The Web site should be available all the time for the clients.

Both servers should be capable of fulfilling the clients\' requests at a time.

You take the following steps:

Create a two-node server cluster.

Configure one server as an active server and the other as a passive server.

Which of the required tasks will be accomplished by taking these steps?

- A. Both servers will be capable of fulfilling the clients\' requests at a time.
- B. None of the tasks will be accomplished.
- C. The Web site will be available all the time for the clients.
- D. Both tasks will be accomplished.

Correct Answer: C

---

### QUESTION 2

You administer your company\'s network. The network consists of a single Active Directory domain. All servers run Windows Server. The network contains a two-node server cluster. The company\'s security expert informs you that the password on the domain user account that is used for the Cluster service has been compromised and must be changed immediately. Your actions should cause minimal or no disruption of the services provided by the cluster because the cluster is running a mission-critical application.

Which of the following should you do?

- A. Use Active Directory Users and Computers to reset the password.
- B. Use the Services console to change the password on any one of the cluster nodes.
- C. Use the Cluster command with the appropriate options.
- D. Use the dsmod user command with the appropriate options.
- E. Use the dsmod computer command with the appropriate options.

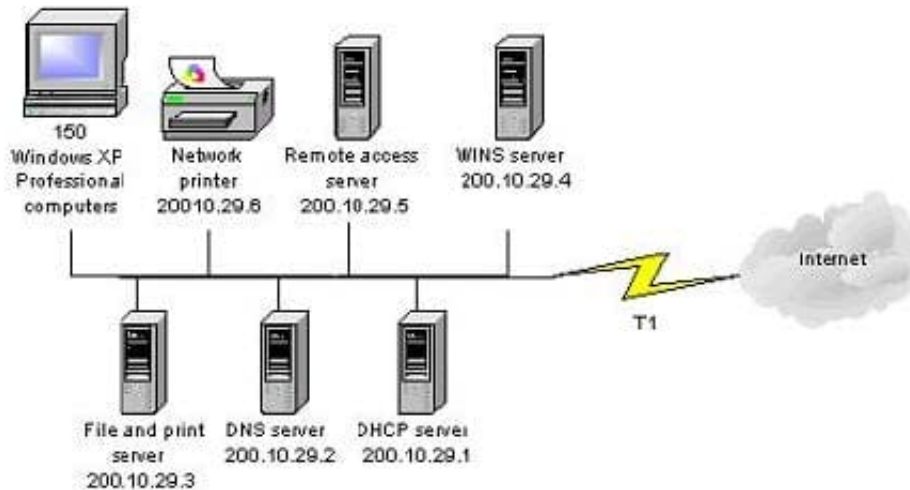
Correct Answer: C

---



### QUESTION 3

You are one of the administrators for your company's Windows Server network. The relevant portion of the network is presented in the following exhibit.



All servers, client computers and one network print device are currently configured with static IP addresses. The network IP address is 200.10.29.0. A DHCP server has been deployed but has not yet been configured. You must configure a

new scope that will provide the existing client computers with IP configurations. The new scope should support an additional 25 new client computers that will be deployed within the next two months.

Which settings should be included in the new DHCP scope? Each correct answer presents part of the solution. (Choose three.)

- A. subnet mask: 255.255.255.0
- B. subnet mask: 255.255.255.128
- C. DHCP scope starting IP address: 200.10.29.7 DHCP scope ending IP address: 200.10.29.254
- D. DHCP scope starting IP address: 200.10.29.1 DHCP scope ending IP address: 200.10.29.254
- E. DHCP scope exclusion range starting IP address: 200.10.29.1 DHCP scope exclusion range ending IP address: 200.10.29.6
- F. DHCP scope exclusion range starting IP address: 200.10.29.1 DHCP scope exclusion range ending IP address: 200.10.29.254

Correct Answer: ADE

### QUESTION 4

You are a network administrator for your Windows Server domain and you are updating the network configuration for your company. You have used part of the 191.99.74.0/16 IP address range that your company owns and segmented the

networks in this new location in such a way to allow for 60 hosts per subnet currently and also allow for an anticipated



growth of 15% for the client systems.

Your design also calls for adding a routing configuration that will allow you to forward IP multicast traffic and the use of the Internet Group Management Protocol (IGMP). You have decided to use the Routing and Remote Access Service on your Windows Server system to handle this requirement in your environment. You also need to define the standards for your network nodes with regard to multicasting on your network.

What is a specific characteristic that is required of a host or network node that is multicast-capable?

Select the best answer.

- A. The network node must be able to use a multicast routing protocol to propagate multicast group listening information to other multicast-capable nodes.
- B. The network node must be able to listen for all multicast traffic on all attached networks. Upon receiving multicast traffic the node would have to forward the multicast packet to attached networks where other nodes are listening or where downstream routers have nodes that are listening.
- C. The network node must be able to listen for IGMP membership report messages and update the TCP/IP multicast forwarding table.
- D. The network node must be able to register the multicast addresses being listened to by the node with local routers so that multicast packets can be forwarded to the network of the node.

Correct Answer: D

---

#### QUESTION 5

You have enabled RRAS on your Windows Server computer. You want to set up IP packet filtering to help you manage access from remote clients. Where in the Routing and Remote Access console will you enable IP packet filters?

- A. The properties of the remote-access ports
- B. The properties of the remote-access server
- C. The profile of a remote-access policy
- D. The conditions of a remote-access policy

Correct Answer: C

[JPR-934 Study Guide](#)

[JPR-934 Exam Questions](#)

[JPR-934 Braindumps](#)