



# JN0-663<sup>Q&As</sup>

Service Provider Routing and Switching, Professional (JNCIP-SP)

## Pass Juniper JN0-663 Exam with 100% Guarantee

Free Download Real Questions & Answers **PDF** and **VCE** file from:

<https://www.passapply.com/jn0-663.html>

100% Passing Guarantee  
100% Money Back Assurance

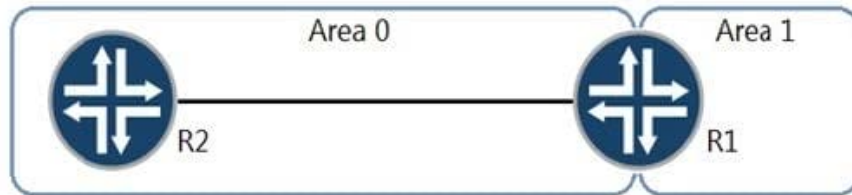
Following Questions and Answers are all new published by Juniper  
Official Exam Center

- ⚙ **Instant Download** After Purchase
- ⚙ **100% Money Back** Guarantee
- ⚙ **365 Days** Free Update
- ⚙ **800,000+** Satisfied Customers





## QUESTION 1



```
users@R1> show ospf3 database inter-area-prefix detail
```

```
OSPF3 database, Area 0.0.0.0
Type      ID          Adv Rtr      Seq          Age    Cksum    Len
InterArPfx 0.0.0.11      172.16.1.1  0x80000001   4      0xaa9a   36
Prefix 2001:db9:ffff:ff00::/64
Prefix-options 0x0, Metric 0
InterArPfx 0.0.0.12      172.16.1.1  0x80000001   4      0x8c6e   44
Prefix 2001:db9:ffff:ff00::1/128
Prefix-options 0x0, Metric 0
InterArPfx 0.0.0.13      172.16.1.1  0x80000001   4      0xa899   36
Prefix 2001:db9:ffff:ff01::/64
Prefix-options 0x0, Metric 0
InterArPfx 0.0.0.14      172.16.1.1  0x80000001   4      0x8a6d   44
Prefix 2001:db9:ffff:ff01::1/128
Prefix-options 0x0, Metric 0
InterArPfx 0.0.0.15      172.16.1.1  0x80000001   4      0xa698   36
Prefix 2001:db9:ffff:ff02::/64
Prefix-options 0x0, Metric 0
InterArPfx 0.0.0.16      172.16.1.1  0x80000001   4      0x886c   44
Prefix 2001:db9:ffff:ff02::1/128
Prefix-options 0x0, Metric 0
InterArPfx 0.0.0.17      172.16.1.1  0x80000001   4      0xa497   36
Prefix 2001:db9:ffff:ff03::/64
Prefix-options 0x0, Metric 0
InterArPfx 0.0.0.18      172.16.1.1  0x80000001   4      0x866b   44
Prefix 2001:db9:ffff:ff03::1/128
Prefix-options 0x0, Metric 0
```

Referring to the exhibit, which command would reduce the size of the OSPF database and corresponding routes?



- ☐ A. 

```
user@R1# show protocols ospf3
area 0.0.0.1 {
    area-range 2001:db9:ffff:ff00::/62;
}
```
- ☐ B. 

```
user@R1# show policy-options policy-statement summary-2001
term 10 {
    from {
        route-filter 2001:db9:ffff:ff00::/62 prefix-length-range /64-/128;
    }
    then accept;
}
user@R1# show protocols ospf3
area 0.0.0.0 {
    inter-area-prefix-import summary-2001;
}
```
- ☐ C. 

```
user@R1# show policy-options policy-statement summary-2001
term 10 {
    from {
        route-filter 2001:db9:ffff:ff00::/62 prefix-length-range /64-/128;
    }
    then accept;
}
user@R1# show protocols ospf3
area 0.0.0.1 {
    inter-area-prefix-export summary-2001;
}
```
- ☐ D. 

```
user@R1# show protocols ospf3
area 0.0.0.1 {
    stub no-summaries;
}
```

A. Option A

B. Option B

C. Option C

D. Option D

Correct Answer: A

---

## QUESTION 2

A customer recently migrated to IS-IS and is concerned about resource starvation when the routing protocol daemon (RPD) starts.

To resolve this issue and protect R2 and R3, which feature should you implement?

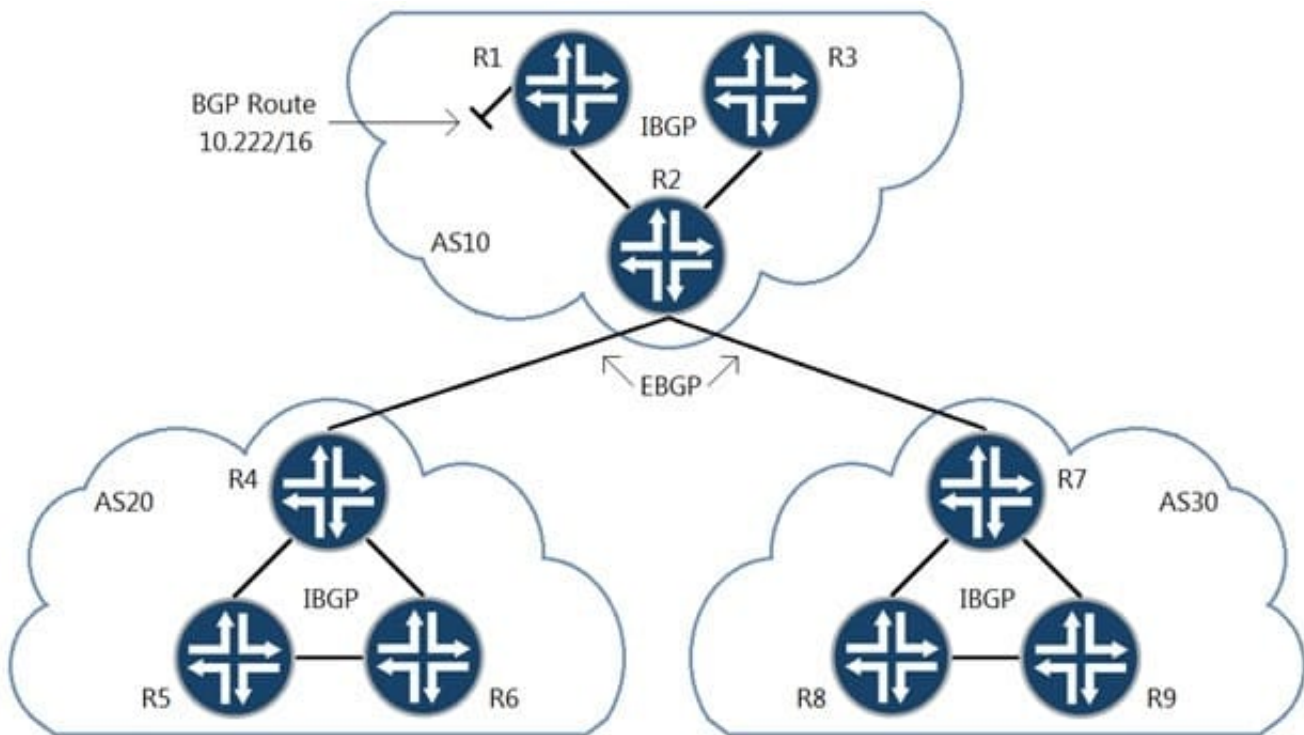
A. Double the policy-options damping half-life timer to let the network settle.



- B. Implement the overload bit and timer to signal service availability.
- C. Deploy firewall filters to limit the prefix count in the route table.
- D. Use the forwarding-options ip-options-protocol-queue parameter to increase resources.

Correct Answer: B

### QUESTION 3

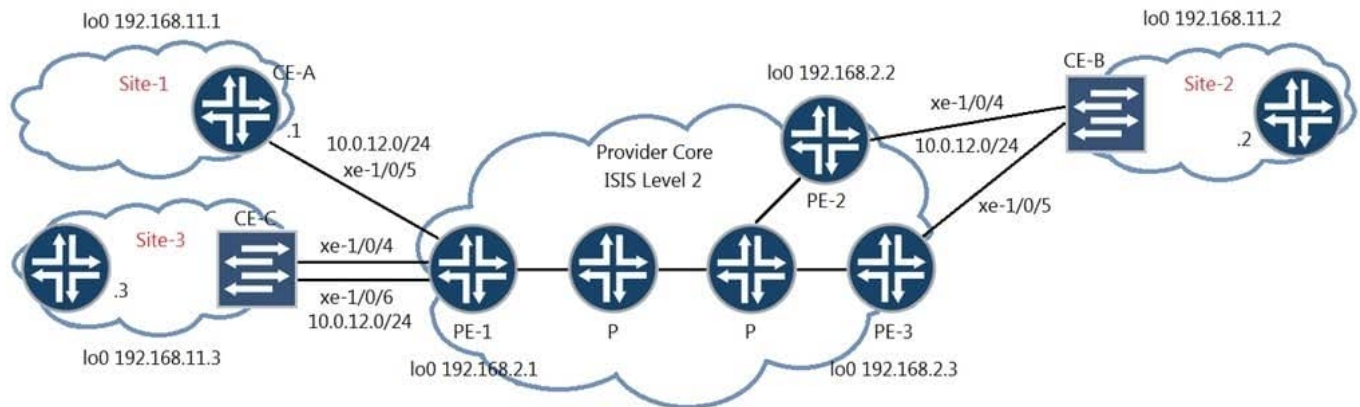


Referring to the exhibit, which three statements about route 10.222/16 are correct when using the default BGP advertisement rules? (Choose three)

- A. R1 will prepend AS10 when advertising 10.222/16 to R2.
- B. R2 will prepend AS10 when advertising 10.222/16 to R7.
- C. R2 will advertise 10.222/16 to R4 with itself as the next hop.
- D. R1 will advertise 10.222/16 to R2 with itself as the next hop.
- E. R7 will advertise 10.222/16 to R9 with itself as the next hop.

Correct Answer: BCE

### QUESTION 4



You have the LDP signaled VPLS topology as shown in the exhibit. CE-B at Site-2 is multihomed to both PE-2 and PE-3.

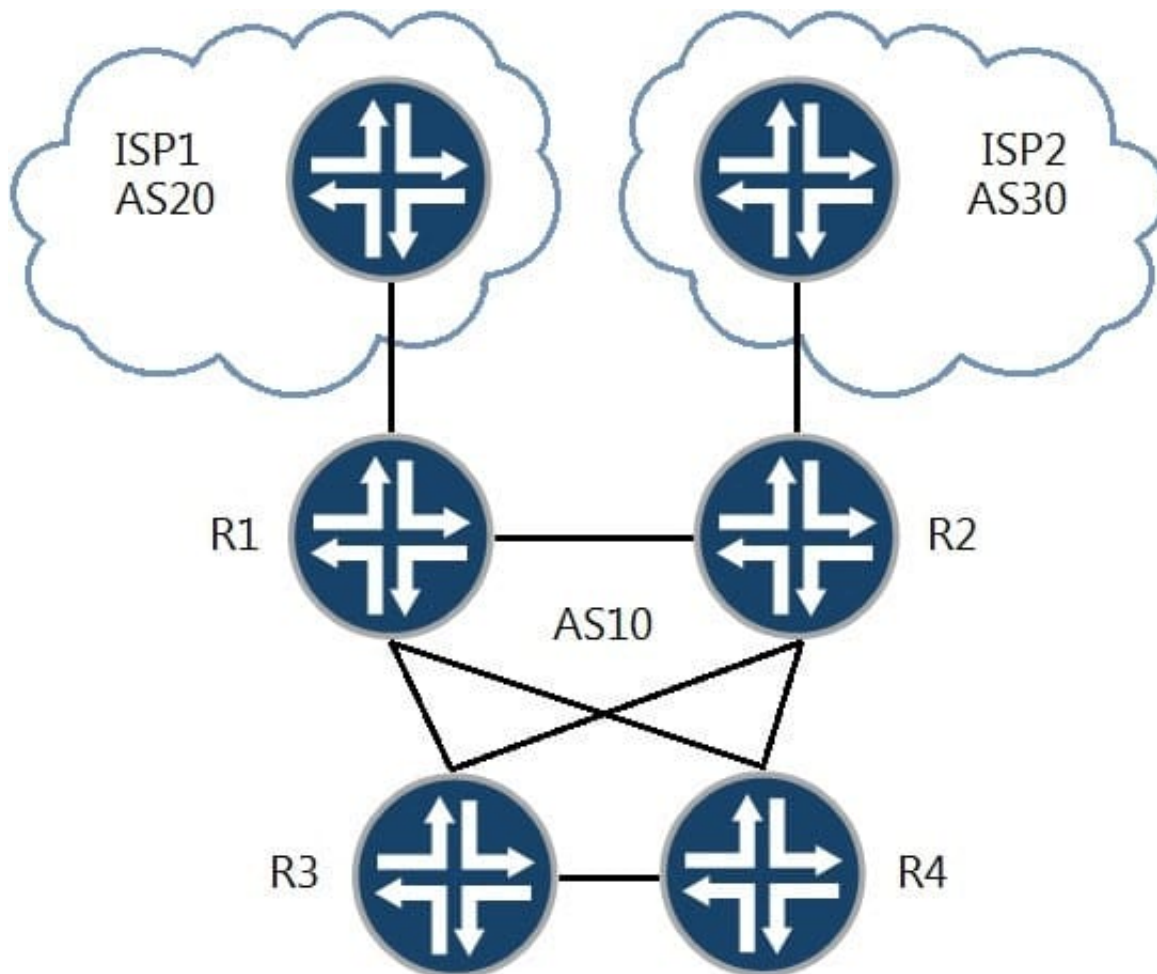
In this scenario, where would you configure loop prevention?

- A. PE-1
- B. CE-B
- C. PE-3
- D. PE-2

Correct Answer: A

#### QUESTION 5





Referring to the exhibit, you want to make ISP1 your preferred connection for inbound and outbound traffic.

Which two steps will accomplish this task? (Choose two.)

- A. Create an export policy setting local-preference 200 and next-hop self and apply it to the IBGP peers on R2.
- B. Create an export policy to prepend the ASN on advertised routes and apply it to the EBGP peer on R1.
- C. Create an export policy to prepend the ASN on advertised routes and apply it to the EBGP peer on R2.
- D. Create an export policy setting local-preference 200 and next-hop self and apply it to the IBGP peers on R1.

Correct Answer: CD

[JN0-663 Practice Test](#)

[JN0-663 Exam Questions](#)

[JN0-663 Braindumps](#)