



# JN0-662<sup>Q&As</sup>

Service Provider Routing and Switching - Professional (JNCIP-SP)

**Pass Juniper JN0-662 Exam with 100% Guarantee**

Free Download Real Questions & Answers **PDF** and **VCE** file from:

<https://www.passapply.com/jn0-662.html>

100% Passing Guarantee  
100% Money Back Assurance

Following Questions and Answers are all new published by Juniper  
Official Exam Center

-  **Instant Download** After Purchase
-  **100% Money Back** Guarantee
-  **365 Days** Free Update
-  **800,000+** Satisfied Customers





### QUESTION 1

You want to reject routes from any BGP peers that have prepended their AS path.

What is the correct as-path regex that would allow you to accomplish this task?

- A. 65001.\*
- B. .{2,}
- C. (65001|65001|65001)
- D. .{0,1}

Correct Answer: D

---

### QUESTION 2

You are asked to configure PIM-SM in your network. Your implementation must allow for load sharing between redundant RPs and, should an RP failure occur, the RP failover time should be minimized.

Which two configuration tasks are required in this scenario? (Choose two.)

- A. Configure MSDP peering sessions between the routers designated as RPs.
- B. Configure the shared anycast address on the RPs as the primary address on the loopback interface.
- C. On the routers designated as RPs, configure the shared anycast address on the loopback interface.
- D. Configure at least two static RPs and bundle them in an RP redundancy group under [edit protocols pim].

Correct Answer: BD

---

### QUESTION 3

You want to add a new OSPF area to your existing OSPF network, however, this area will not be directly connected to Area 0. Which feature would you use to complete this task?

- A. a routing policy
- B. not-so stubby area
- C. virtual link
- D. Type 10 LSA

Correct Answer: C

---

### QUESTION 4



Click the Exhibit button.

```
user@PE-1> shcw configuration protocols bgp group MBGP-INT
type internal;
local-address 10.222.222.3;
family inet {
    unicast;
}
family inet-vpn {
    unicast;
}
neighbor 10.222.222.2;
neighbor 10.222.222.1;
neighbor 10.222.222.4;
```

```
user@PE-1> shcw configuration routing-instances CE-A-2
instance-type vrf;
interface ge-0/0/9.0;
route-distinguisher 10.222.222.3:2;
vrf-target target:65511:101;
routing-options {
    static {
        route 192.168.106.0/24 next-hop 192.168.6.2;
    }
}
```

```
user@PE-2> shcw configuration protocols bgp group MBGP-INT
type internal;
local-address 10.222.222.4;
family inet-vpn {
    unicast;
}
neighbor 10.222.222.2;
neighbor 10.222.222.3;
neighbor 10.222.222.1;
```

```
user@PE-2> shcw configuration routing-instances CE-A-1
instance-type vrf;
interface ge-0/0/9.0;
route-distinguisher 10.222.222.3:2;
vrf-target target:6511:101;
routing-options {
    static {
        route 192.168.100.0/24 next-hop 192.168.0.2;
    }
    auto-export;
}
```

The customer's hosts cannot communicate across their Layer 3 VPN. The exhibit shows the configuration for the two



PE devices in the Layer 3 VPN.

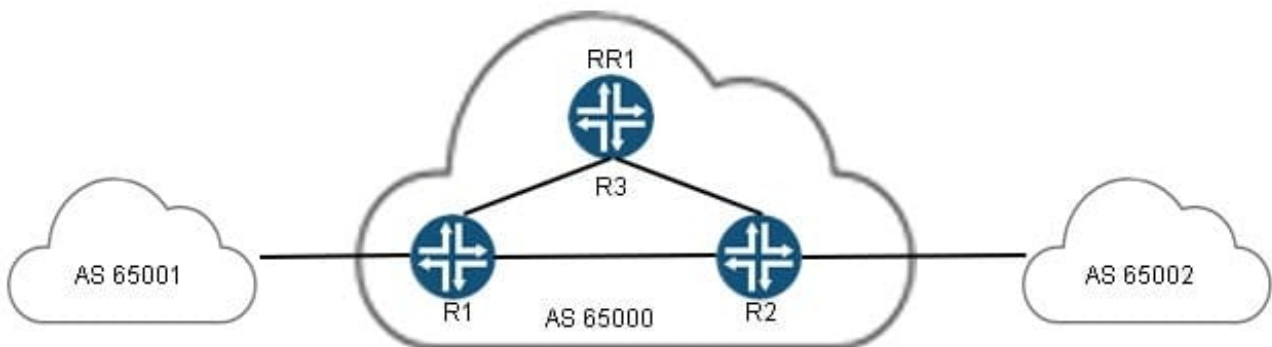
What should you do to solve the problem?

- A. Add the family INET unicast NLRI address family in the BGP group for PE-2.
- B. Set the route distinguishers to be different for PE-1 and PE-2.
- C. Add the auto export feature in the routing instances for PE-1.
- D. Set the VRF target to the same value on PE-1 and PE-2.

Correct Answer: D

### QUESTION 5

Click the Exhibit button.



```
user@router# show protocols bgp
group route-reflector {
  type internal;
  local-address 10.1.1.1;
  export nhs;
  cluster 10.1.1.1;
  neighbor 10.1.1.2;
  neighbor 10.1.1.3;
}
user@router# show policy-options policy-statement nhs
term 1 {
  then {
    next-hop self;
  }
}
```

You administer AS 65000, and have deployed a route reflector (RR1) in your network as shown in the exhibit. The traffic between AS 65001 and AS 65002 is going through the route reflector, even though it is not the best path.

What will solve this problem?



- A. Change the LOCAL\_PREF so that it uses the preferred path.
- B. Remove the nhs policy.
- C. Change the originator to be the preferred path.
- D. Change the IGP metric so it is lower on the preferred path.

Correct Answer: B

[Latest JN0-662 Dumps](#)

[JN0-662 Practice Test](#)

[JN0-662 Braindumps](#)