



# JN0-662<sup>Q&As</sup>

Service Provider Routing and Switching - Professional (JNCIP-SP)

## Pass Juniper JN0-662 Exam with 100% Guarantee

Free Download Real Questions & Answers **PDF** and **VCE** file from:

<https://www.passapply.com/jn0-662.html>

100% Passing Guarantee  
100% Money Back Assurance

Following Questions and Answers are all new published by Juniper  
Official Exam Center

- ⚙ **Instant Download** After Purchase
- ⚙ **100% Money Back** Guarantee
- ⚙ **365 Days** Free Update
- ⚙ **800,000+** Satisfied Customers





## QUESTION 1

Click the Exhibit button.

```
[edit routing-instances]
user@PE-1# show
CE-A1 {
  instance-type 12vpn;
  interface ge-4/0/0.512;
  route-distinguisher 10.222.222.3:2;
  vrf-target target:65511:101;
  protocols {
    12vpn {
      encapsulation-type ethernet-vlan;
      site A-1 {
        site-identifier 5;
        interface ge-4/0/0.512;
      }
    }
  }
}

[edit routing-instances]
user@PE-1# run show 12vpn connections
Layer-2 VPN connections:

Legend for connection status (St)
EI -- encapsulation invalid          NC -- interface encapsulation not CCC/TCC/VPLS
EM -- encapsulation mismatch         WE -- interface and instance encaps not same
VC-Dn -- Virtual circuit down        NP -- interface hardware not present
CM -- control-word mismatch          -> -- only outbound connection is up
CN -- circuit not provisioned         <- -- only inbound connection is up
OR -- out of range                   Up -- operational
OL -- no outgoing label              Dn -- down
LD -- local site signaled down        CF -- call admission control failure
RD -- remote site signaled down       SC -- local and remote site ID collision
LN -- local site not designated       LM -- local site ID not minimum designated
RN -- remote site not designated      RM -- remote site ID not minimum designated
XX -- unknown connection status       IL -- no incoming label
MM -- MTU mismatch                   MI -- Mesh-Group ID not available
BK -- Backup connection              ST -- Standby connection
PF -- Profile parse failure           PB -- Profile busy
RS -- remote site standby             SN -- Static Neighbor
LB -- Local site not best-site        RB -- Remote site not best-site
VM -- VLAN ID mismatch               HS -- Hot-standby Connection

Legend for interface status
Up -- operational
Dn -- down

Instance: CE-A1
Edge protection: Not-Primary
  Local site: A-1 (5)
    connection-site      Type      St      Time last up      # Up trans
    3                    rmt      OR
```

Referring to the exhibit, the Layer 2 VPN between PE-1 and PE-2 is not functioning properly.

What must you do to solve the problem?

- A. Set the remote site identifier to 3.
- B. Set the local site identifier to 3.
- C. Set the local site identifier to 1.
- D. Set the remote site identifier to 5.



Correct Answer: B

## QUESTION 2

After committing the following configuration change on your MPLS VPN PE router, all MPLS VPN destinations become unreachable.

```
user@router# show protocols mpls  
traffic-engineering bgp-igp;
```

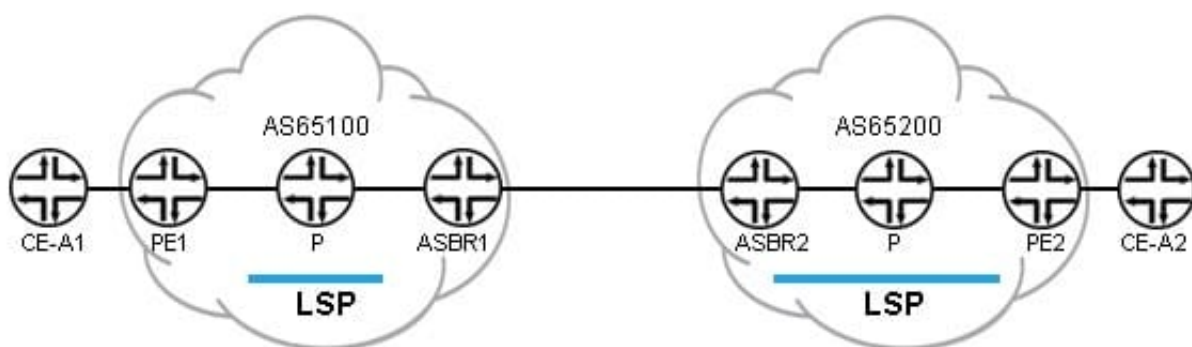
Which additional configuration solves the issue?

- A.
- B.
- C.
- D.

Correct Answer: C

## QUESTION 3

Click the Exhibit button.



Referring to the exhibit, what information must be acquired about AS65200's configuration for AS65100 to build an interprovider VPN between PE1 to PE2?

- A. the route-distinguisher of PE2 and the loopback of PE2
- B. the route-distinguisher of PE2 and the loopback of ASBR2
- C. the route-target used for CE-A2 and the loopback of PE2



D. the route-target used for CE-A2 and the loopback of ASBR2

Correct Answer: C

#### QUESTION 4

You are configuring a BGP-signaled Layer 2 VPN service. Which two statements are true in this scenario? (Choose two.)

- A. RSVP-signaled LSPs are required.
- B. The family 12vpn auto-discovery-only parameter is required for BGP sessions.
- C. The family 12vpn signaling parameter is required for BGP sessions.
- D. RSVP-signaled or LDP-signaled LSPs may be used.

Correct Answer: CD

#### QUESTION 5

Click the Exhibit button.

```
[edit routing-instances]
user@R1# show EVPN
instance-type evpn;
vlan-id 710;
interface ge-1/0/4.710;
routing-interface irb.710;
route-distinguisher 193.168.2.1:100;
vrf-target target:65512:100;
protocols {
    evpn {
        default-gateway advertise;
    }
}
```

What is accomplished by the default-gateway parameter in the configuration shown in the exhibit?

- A. The device creates a default route and distributes the IP address to all peers.
- B. The device sends the MAC and IP addresses of the IRB interface to its peers.
- C. The device sends the IP address of the IRB interface without the MAC address.
- D. The device creates a default route and distributes its MAC and IP address to all peers.



VCE & PDF

PassApply.com

<https://www.passapply.com/jn0-662.html>

2024 Latest passapply JN0-662 PDF and VCE dumps Download

---

Correct Answer: B

[JN0-662 VCE Dumps](#)

[JN0-662 Practice Test](#)

[JN0-662 Exam Questions](#)