



# JN0-362<sup>Q&As</sup>

Service Provider Routing and Switching - Specialist (JNCIS-SP)

## Pass Juniper JN0-362 Exam with 100% Guarantee

Free Download Real Questions & Answers **PDF** and **VCE** file from:

<https://www.passapply.com/jn0-362.html>

100% Passing Guarantee  
100% Money Back Assurance

Following Questions and Answers are all new published by Juniper  
Official Exam Center

- ⚙️ **Instant Download** After Purchase
- ⚙️ **100% Money Back** Guarantee
- ⚙️ **365 Days** Free Update
- ⚙️ **800,000+** Satisfied Customers



**QUESTION 1**

Which MPLS feature works with Constrained Shortest Path First (CSPF) to protect against the primary and secondary paths using the same link?

- A. fate-sharing
- B. explicit null configuration
- C. policy control over LSP selection
- D. LSP metrics

Correct Answer: A

---

**QUESTION 2**

What is the Junos default router priority advertisement value for IS-IS?

- A. 64
- B. 32
- C. 0
- D. 127

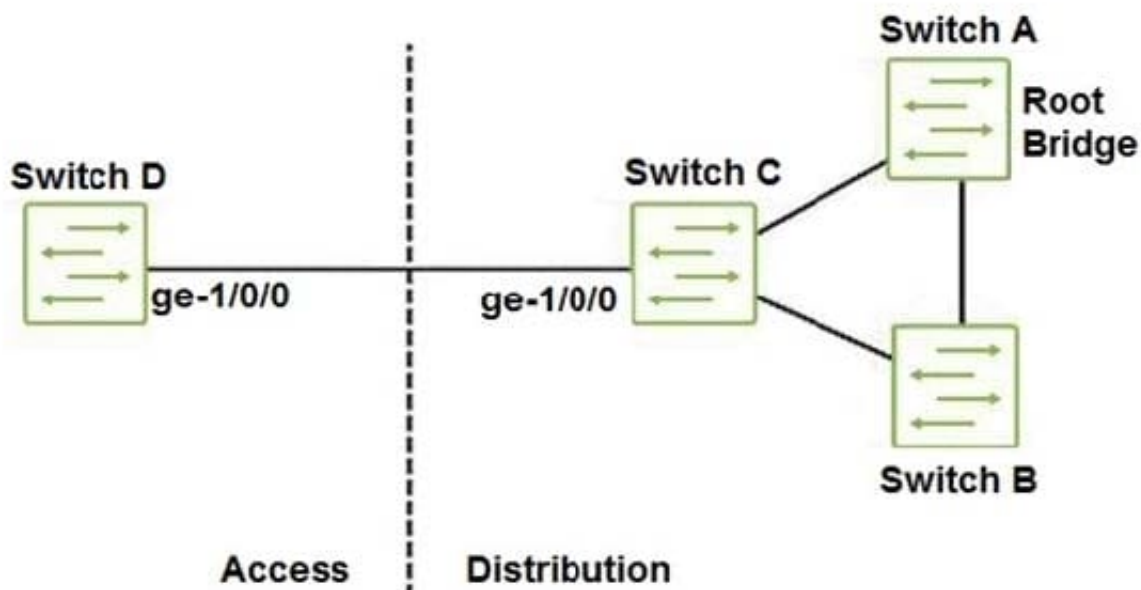
Correct Answer: A

Reference: [https://www.juniper.net/documentation/en\\_US/junos/topics/concept/routing-protocol-is-issecurity-designated-router-understanding.html#:~:text=If%20routers%20in%20the%20network,a%20priority%20value%20of%2064.](https://www.juniper.net/documentation/en_US/junos/topics/concept/routing-protocol-is-issecurity-designated-router-understanding.html#:~:text=If%20routers%20in%20the%20network,a%20priority%20value%20of%2064.)

---

**QUESTION 3**

Click the Exhibit button.



In the network shown in the exhibit, all switches are configured with the default STP root bridge priority, and Switch A has been selected as root. You recently added the older Switch D into the network as an access switch, and notice it has taken over as root.

Which configuration would solve this problem?

- ☐ A.

```
[edit protocols rstp]
user@switchC# show
interface ge-1/0/0 {
    edge;
}
```
- ☐ B.

```
[edit protocols rstp]
user@switchD# show
interface ge-1/0/0 {
    no-root-port;
}
```
- ☐ C.

```
[edit protocols rstp]
user@switchC# show
interface ge-1/0/0 {
    no-root-port;
}
```
- ☐ D.

```
[edit protocols rstp]
user@switchC# show
interface ge-1/0/0 {
    bpdu-timeout-action {
        block;
    }
}
```



- A. Option A
- B. Option B
- C. Option C
- D. Option D

Correct Answer: C

Reference: [https://www.juniper.net/documentation/en\\_US/junos/topics/reference/configuration-statement/no-root-port-edit-protocols-stp.html](https://www.juniper.net/documentation/en_US/junos/topics/reference/configuration-statement/no-root-port-edit-protocols-stp.html)

---

#### QUESTION 4

Which two statements are true for GRE tunneling? (Choose two.)

- A. GRE tunnel endpoints must have a valid route to the remote endpoint
- B. GRE tunnels support multiple logical units per interface
- C. GRE tunnels are stateful by default
- D. GRE tunnels support only one logical unit per interface

Correct Answer: AB

Reference: [https://www.juniper.net/documentation/en\\_US/junos/topics/topic-map/filtering-unicast-packetsmulticast-tunnel-interfaces.html#id-configuring-unicast-tunnels](https://www.juniper.net/documentation/en_US/junos/topics/topic-map/filtering-unicast-packetsmulticast-tunnel-interfaces.html#id-configuring-unicast-tunnels)

---

#### QUESTION 5

In which situation would you disable penultimate-hop popping?

- A. When you want to bypass a penultimate router that does not support IPv6 tunneling
- B. When you want to ensure the penultimate router can perform the destination route lookup
- C. When you want to enforce the same class-of-service behavior through the entire LSP
- D. When you want to utilize a penultimate router that supports IPv6 tunneling

Correct Answer: C

[Latest JN0-362 Dumps](#)

[JN0-362 VCE Dumps](#)

[JN0-362 Practice Test](#)